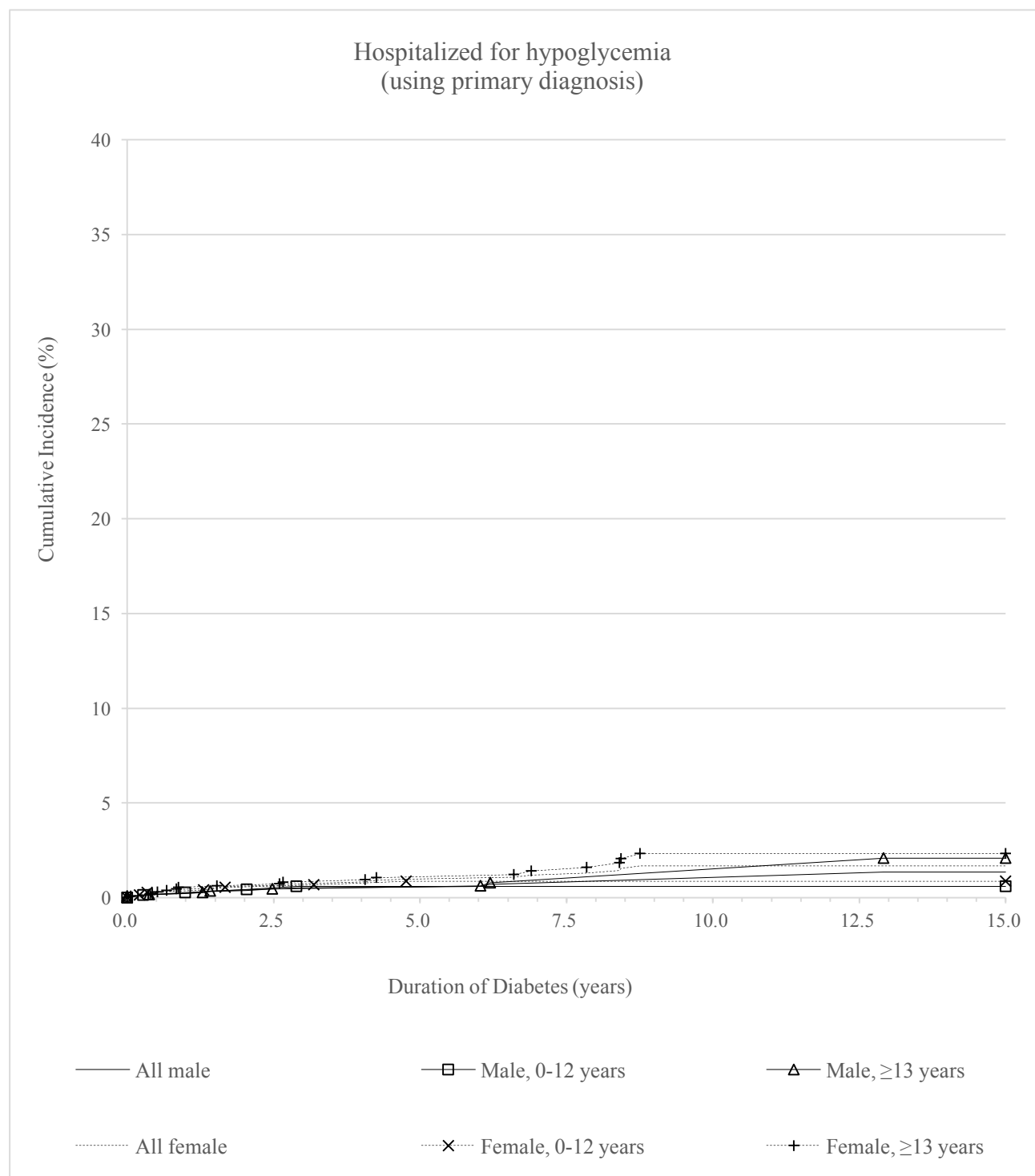


Supplementary Figure 3: Age-sex-specific cumulative incidences of hospitalized for hypoglycemia according to duration of diabetes in patients with type 1 diabetes (early-onset: 0-12 years, late-onset: ≥ 13 years)



Note:

p value for comparison of cumulative incidence for male vs. female was 0.0782, for male, early vs. late-onset was 0.6272, for female, early vs. late-onset was 0.1326.