

Figure S1. ^1H NMR spectra of PHBHHx/PBAT=80/20 (a) before and (b) after biodegradation.

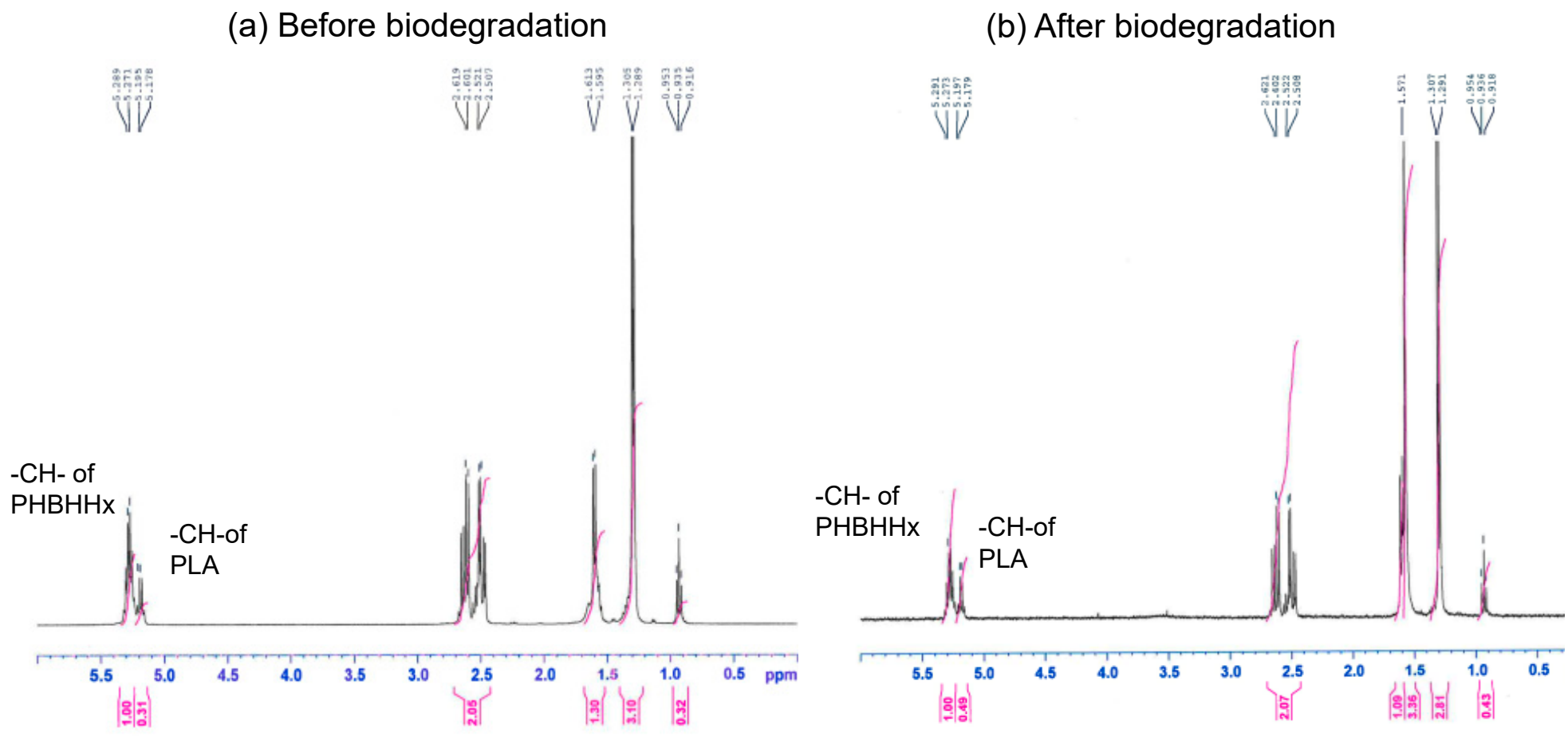


Figure S2-1. ¹H NMR spectra of PHBHHx/PLA=80/20 (a) before and (b) after biodegradation.

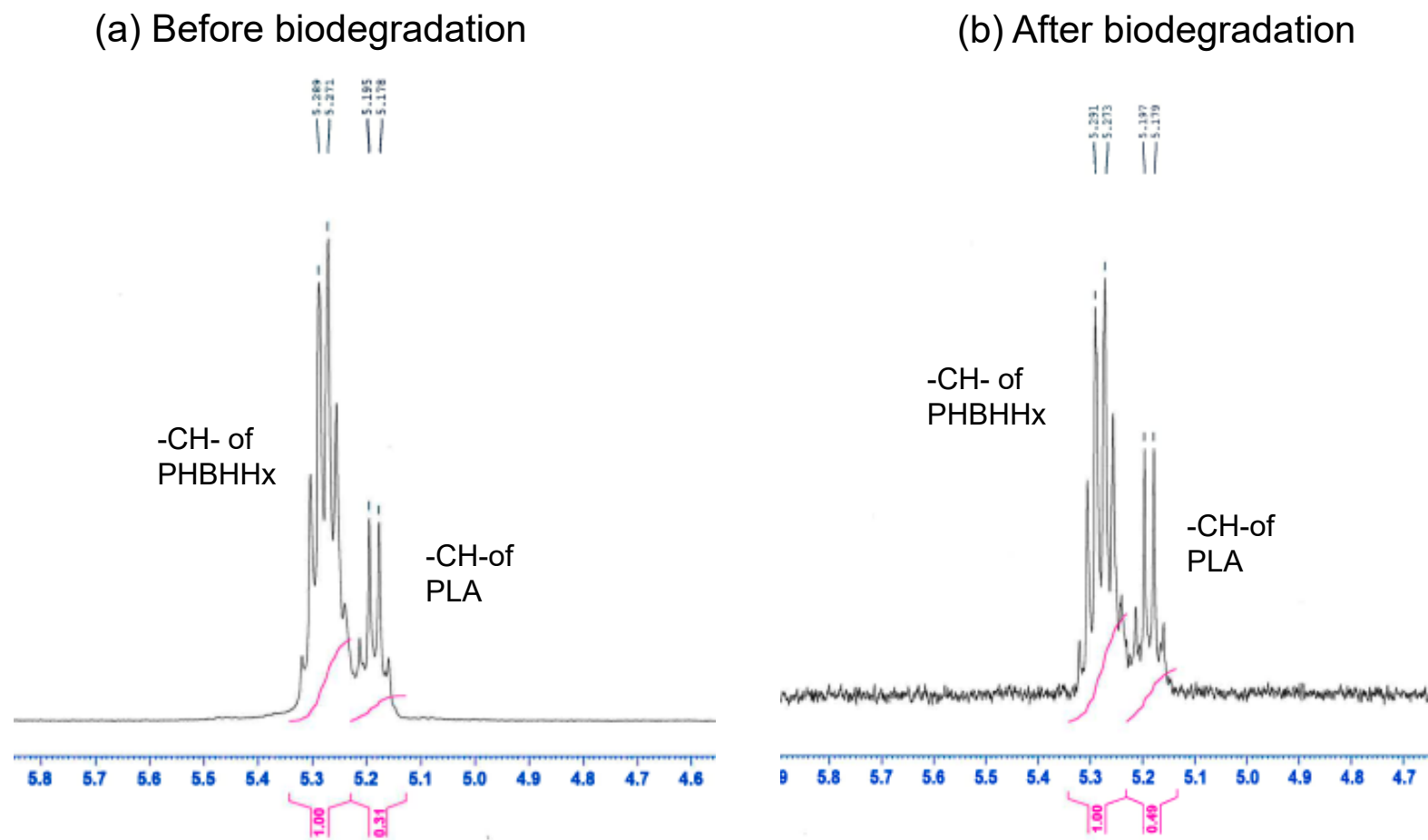


Figure S2-2. Enlarged view of the ^1H NMR spectra of PHBHHx/PLA=80/20 (a) before and (b) after biodegradation.

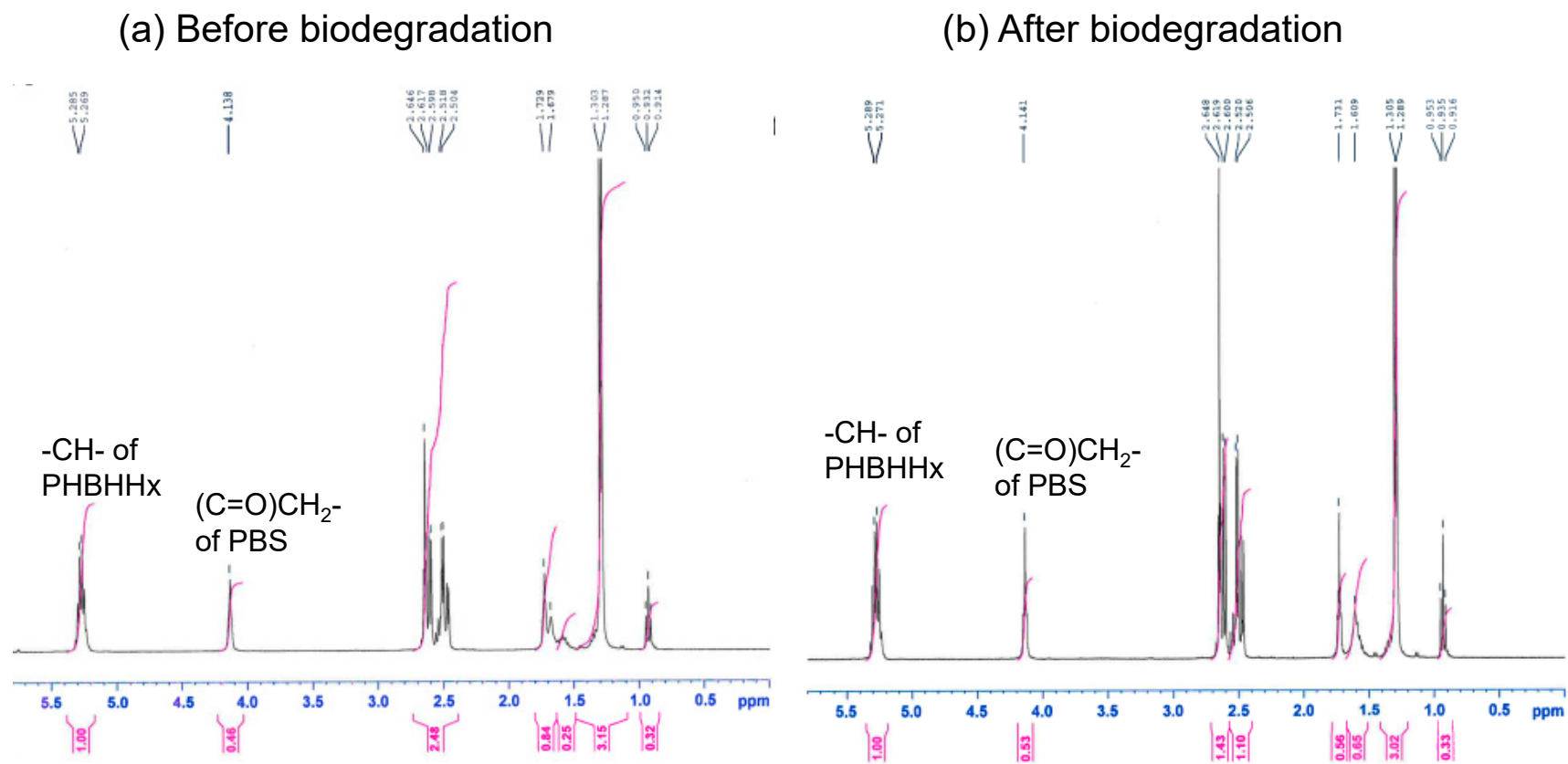


Figure S3. ¹H NMR spectra of PHBHHx/PBS=80/20 (a) before and (b) after biodegradation.

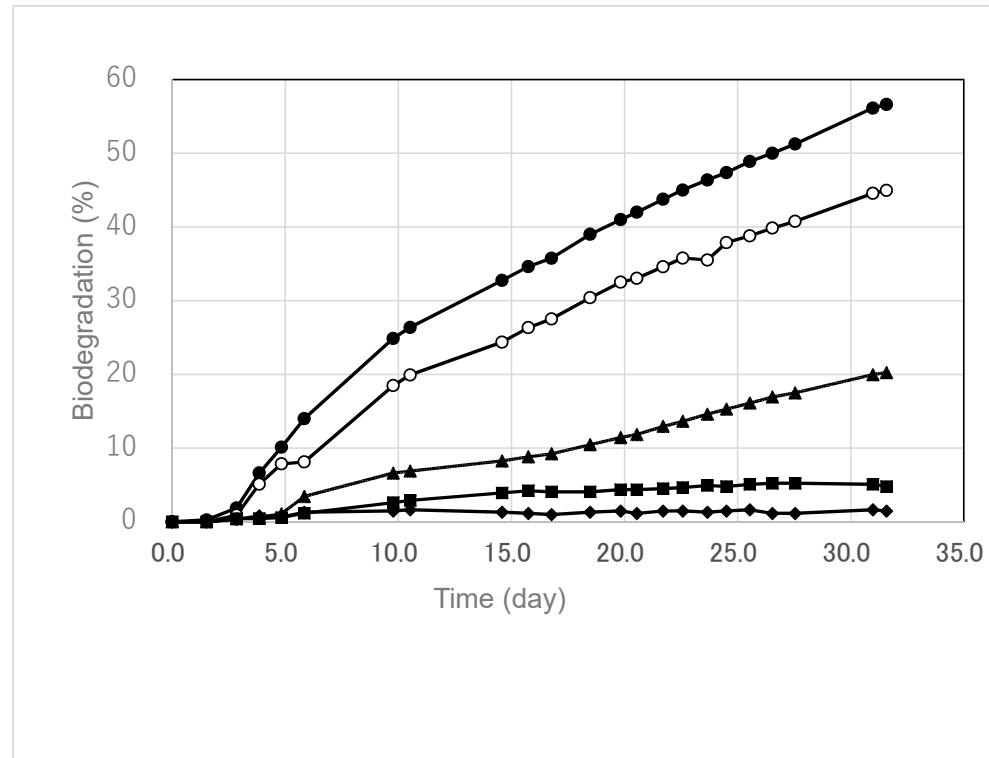


Figure S4. The biodegradation of PHBHHx and PHBHHx/PBS blends (powder shape) in seawater. ●: PHBHHx, ○: PHBHHx/PBS=80/20(wt/wt), ▲: PHBHHx/PBS=60/40(wt/wt), ■: PHBHHx/PBS=40/60(wt/wt), ◆: PBS.

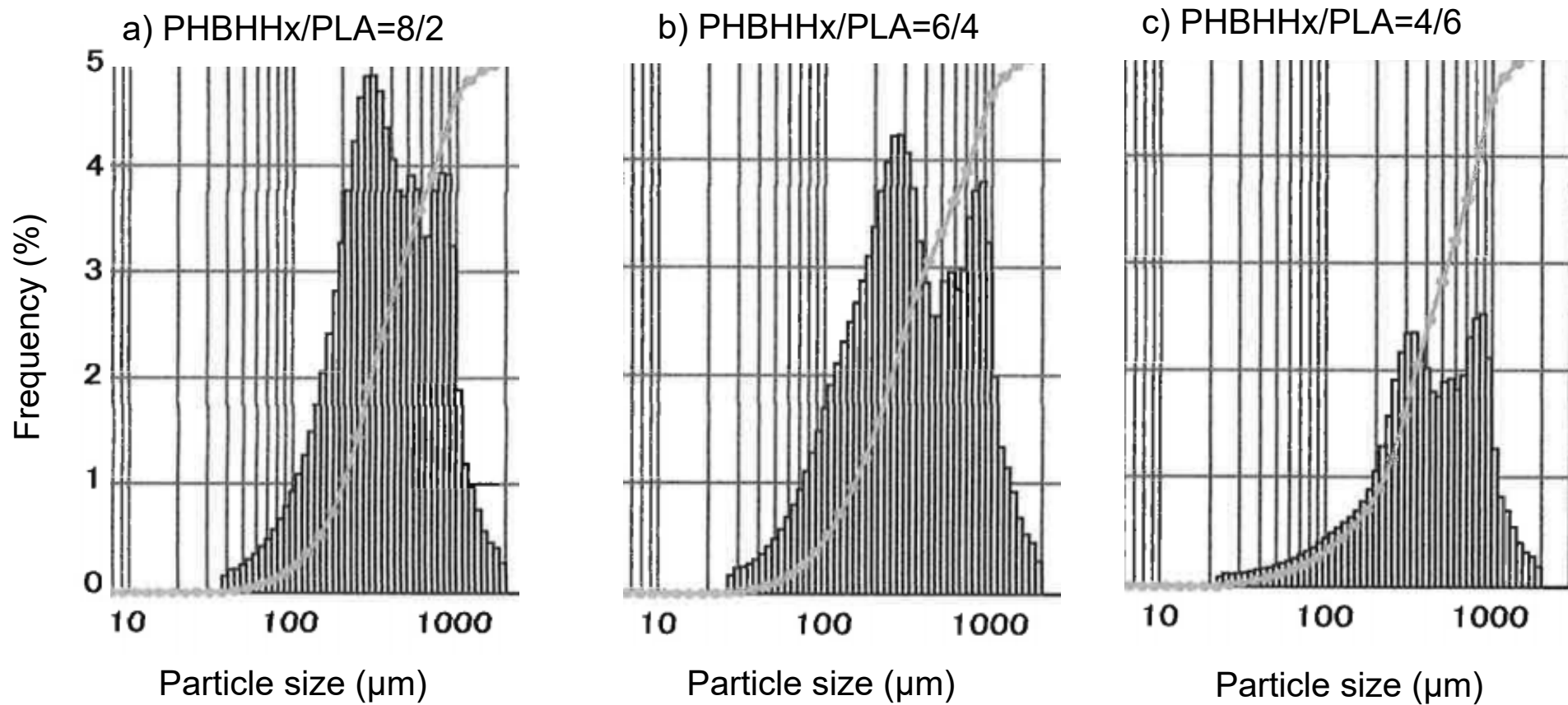


Figure S5. Particle size distribution of PHBHHx/PLA blend powders. Particle size distribution was measured using a Microtrac MT3300EXII (Nikkiso). The upper limit of measurement was 2,000 μm.