

Supplementary material

Table S1. Summary of species and number of examined individuals used in the current study.

| Species | Family | Number of individuals | |
|-----------------------------------|----------------|-----------------------|---|
| | | ♂ | ♀ |
| <i>Acrochordus javanicus</i> | Acrochordidae | 1 | 3 |
| <i>Elaphe bimaculata</i> | | | 2 |
| <i>Lampropeltis ruthveni</i> | | 1 | 1 |
| <i>Lampropeltis triangulum</i> | | | 1 |
| <i>Natrix natrix</i> | Colubridae | 1 | 1 |
| <i>Pantherophis guttatus</i> | | | 2 |
| <i>Zamenis situla</i> | | | 1 |
| <i>Homalopsis buccata</i> | Homalopsidae | 1 | 1 |
| <i>Boaedon</i> sp. 1 | | 1 | 4 |
| <i>Boaedon</i> sp. 2 | Lamprophiidae | 1 | 2 |
| <i>Boaedon</i> sp. 3 | | 1 | 1 |
| <i>Crotalus durissus unicolor</i> | Viperidae | | 1 |
| <i>Xenodermus javanicus</i> | Xenodermatidae | 1 | 1 |

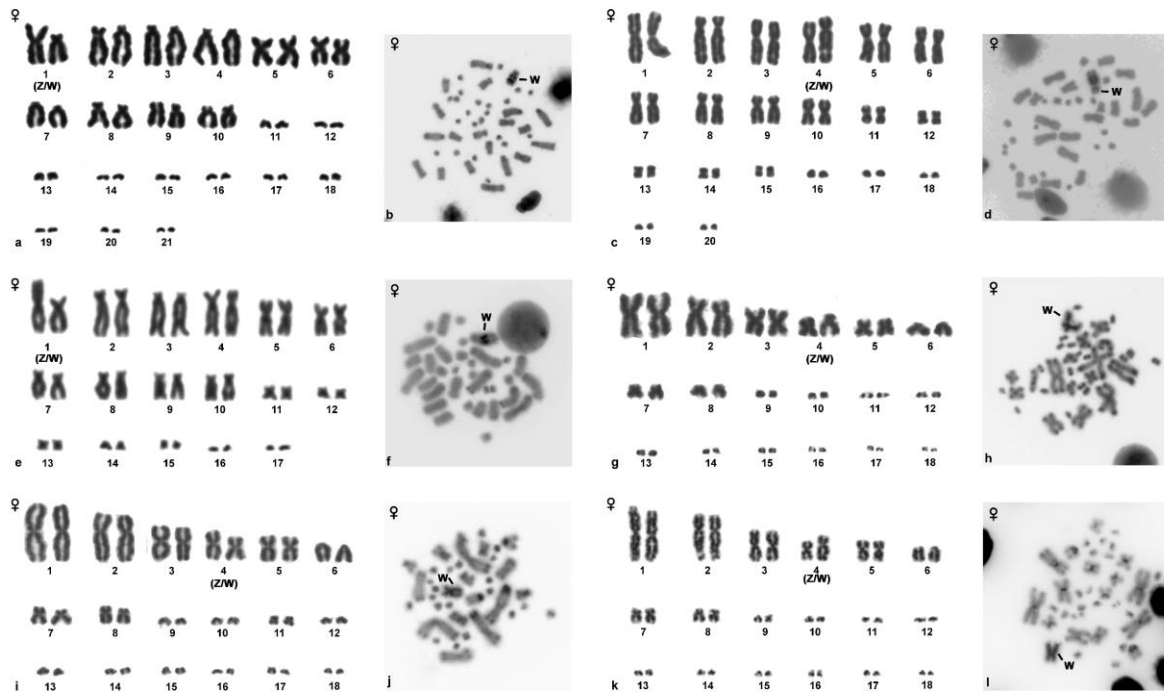


Figure S1. Giemsa stained karyotypes and C-banded metaphase spreads of unstudied species from female specimens of *Boaedon* sp.1 (a,b), *Boaedon* sp.2 (c,d), *Boaedon* sp.3 (e,f), *Lampropeltis ruthveni* (g,h), *Lampropeltis triangulum* (i,j) and *Zamenis situla* (k,l).