

Supplementary Figure 1- Uncropped scans of immunoblots with molecular weight markers indicated

(The corresponding cropped blots in main figures are shown in red box here in the full Gel)

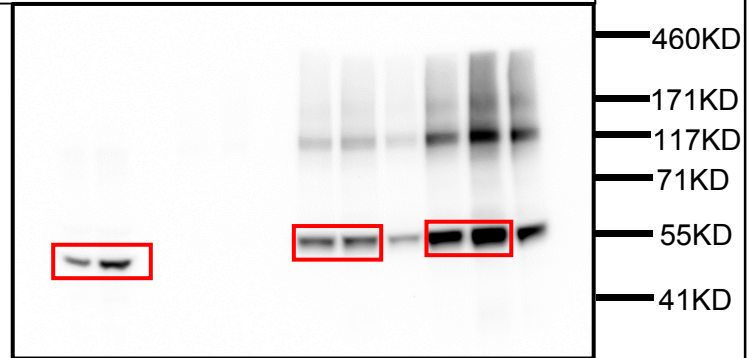
Fig.2 f

Lane#:

- 1: Tma19 lysate;
- 2: Ppt1 lysate;
- 3: Tma19 no HS biotin pull down;
- 4: Tma19 HS biotin pull down;
- 5: Tma19 (unrelated experiment);
- 6: Ppt1 no HS biotin pull down;
- 7: Ppt1 HS biotin pull down;
- 8: Ppt1 (unrelated experiment);

Anti-GFP:

Lane #: 1 2 3 4 5 6 7 8



Lane#: 1 2 3 4 5 6 7 8

Anti-HA

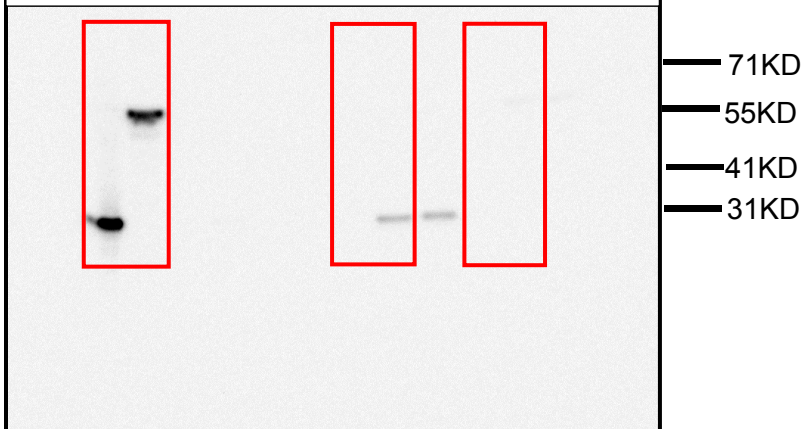


Fig. 3 c

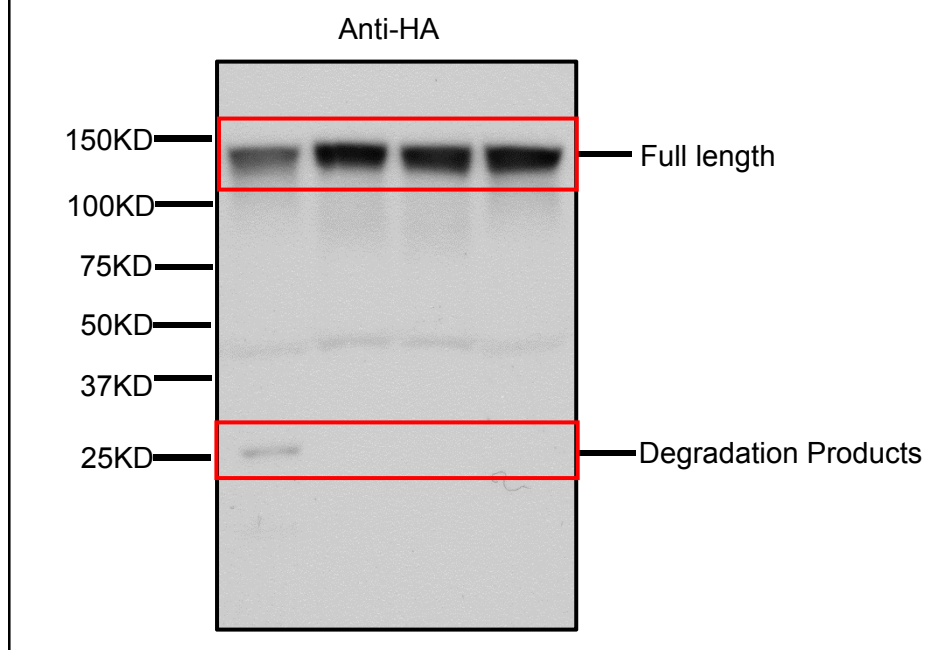
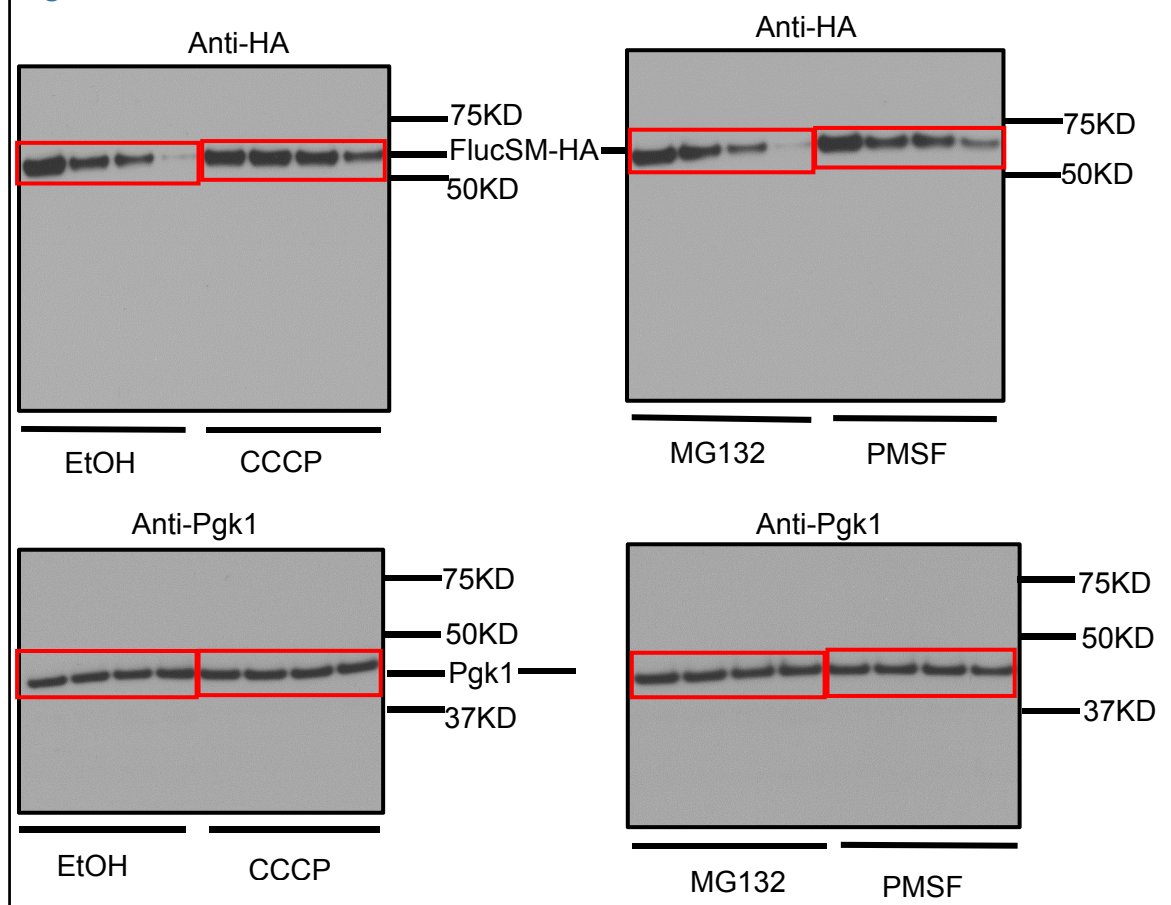


Fig. 3d

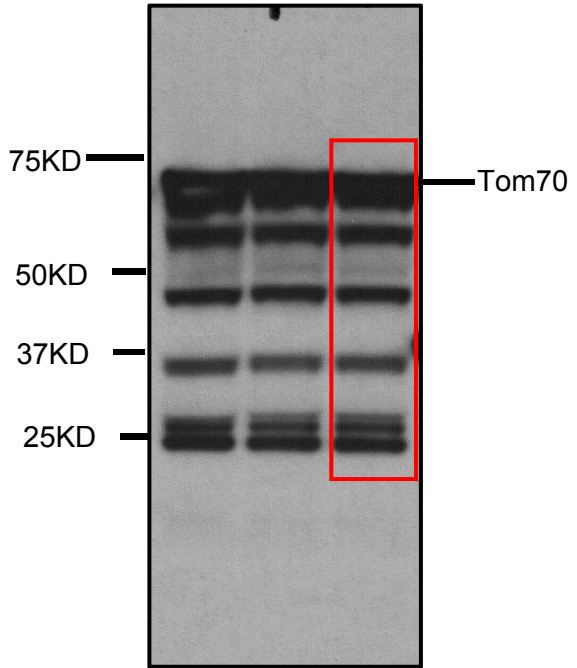


Extended Data Fig.1 f

Anti-HA

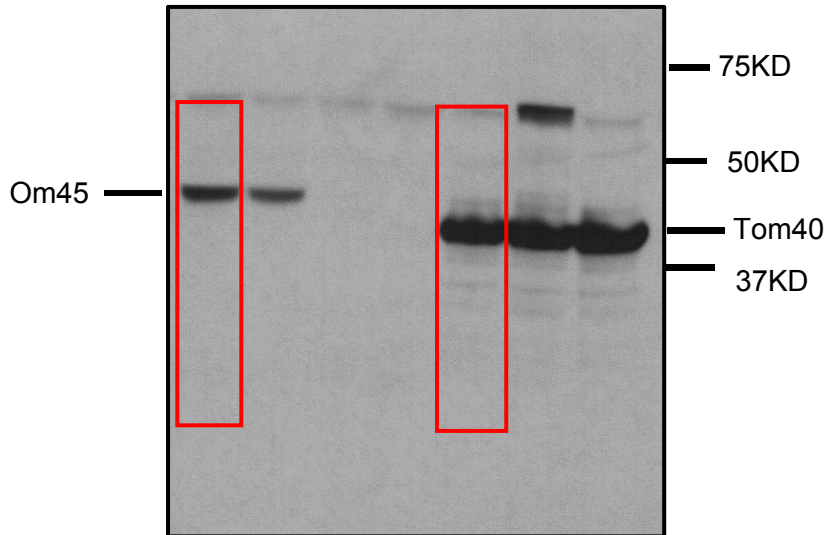


Whole cell lysates of
3 Tom70-HA single colonies

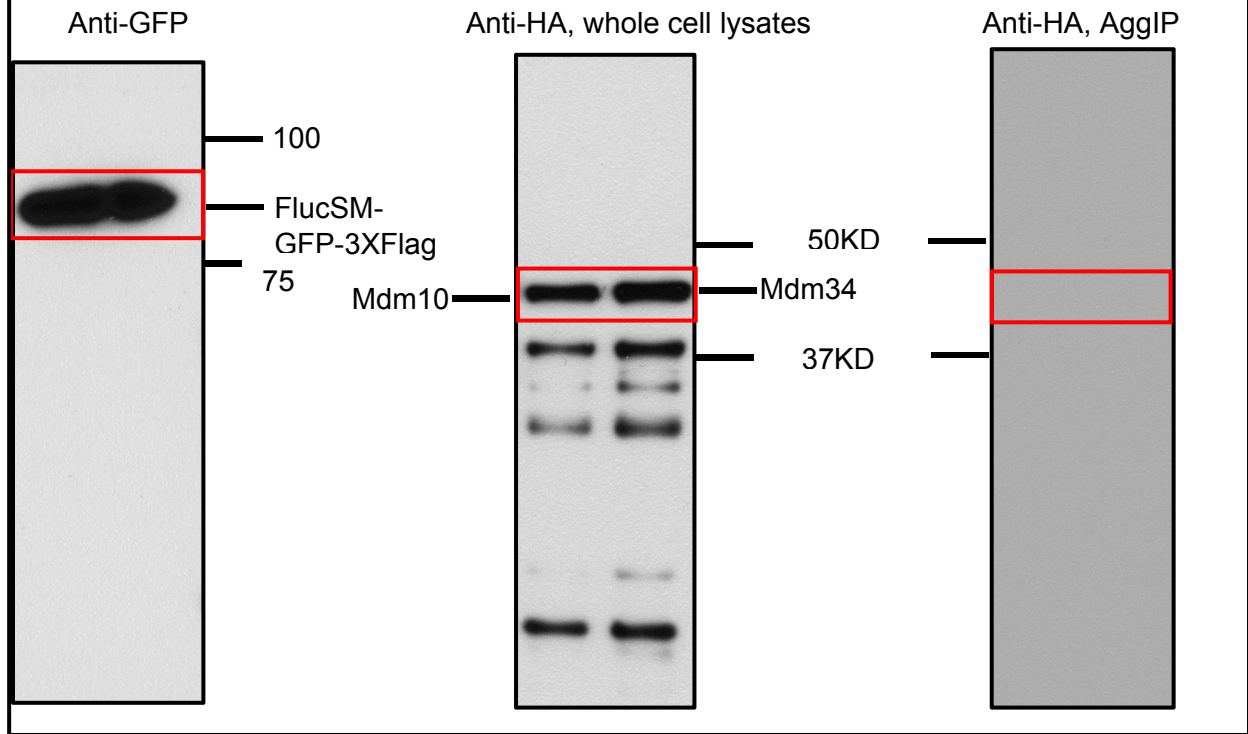


Whole cell
lysates of 2
Om45 single
colonies

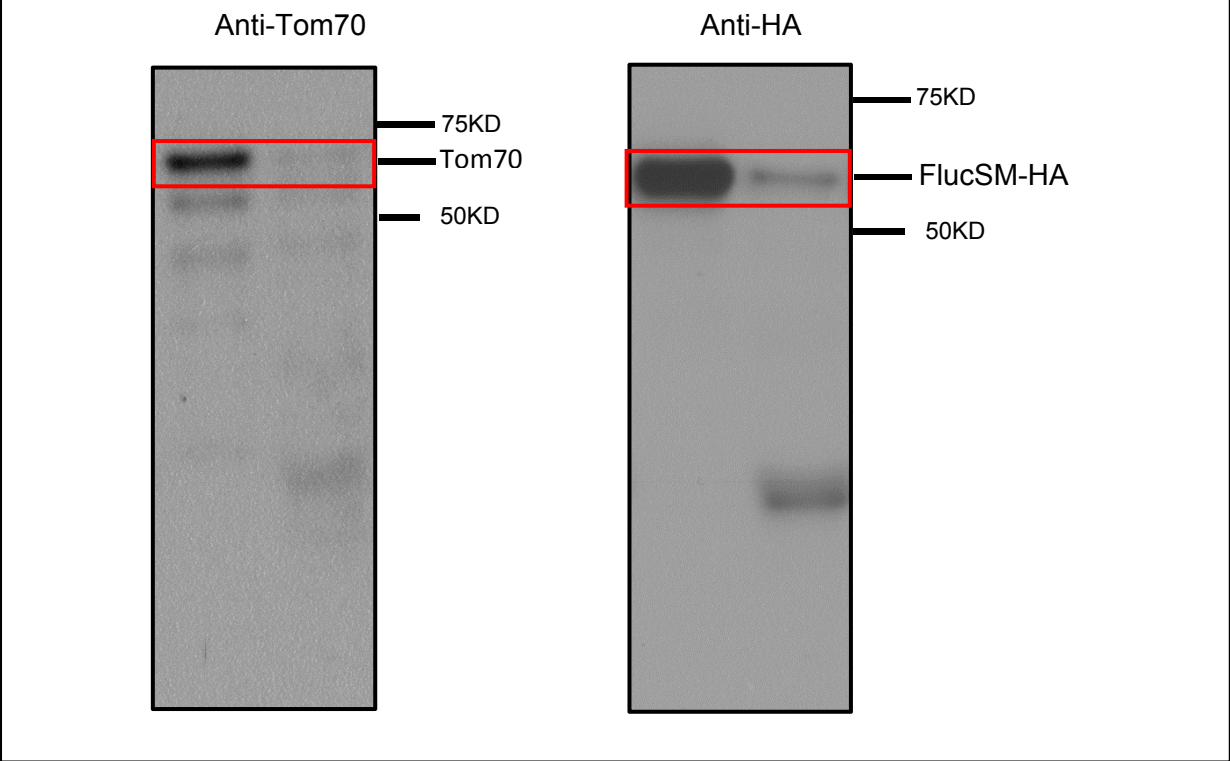
Whole cell
lysates of 3
Tom40 single
colonies



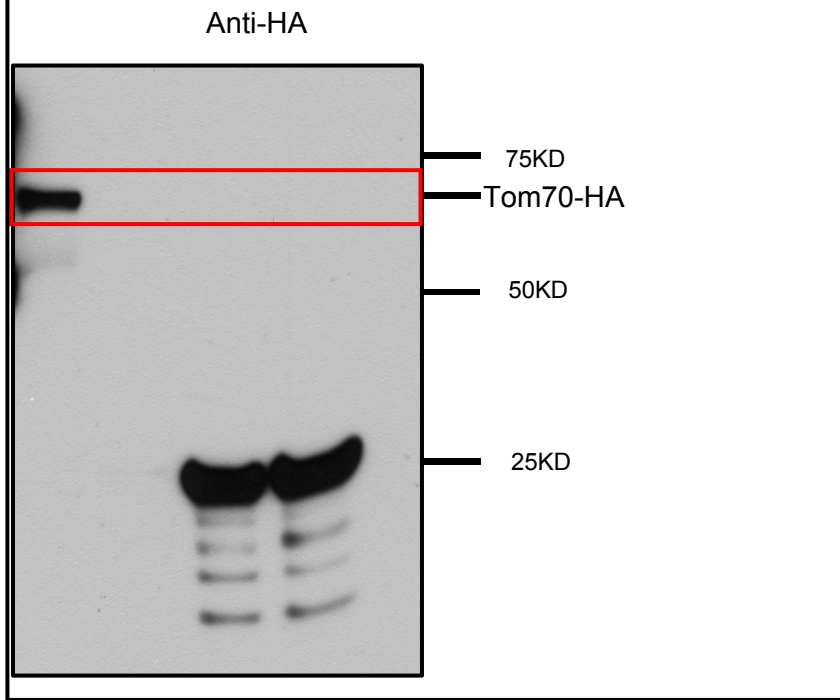
Extended Data Fig. 1g



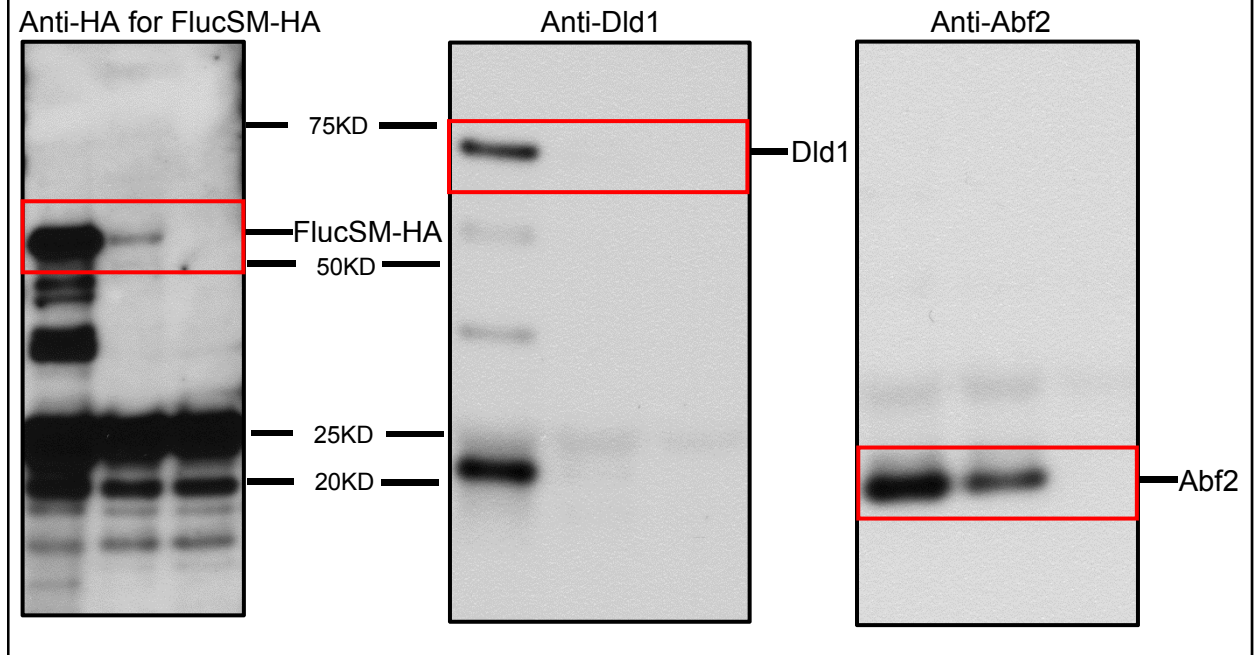
Extended Data Fig. 2l



Extended Data Fig. 2m



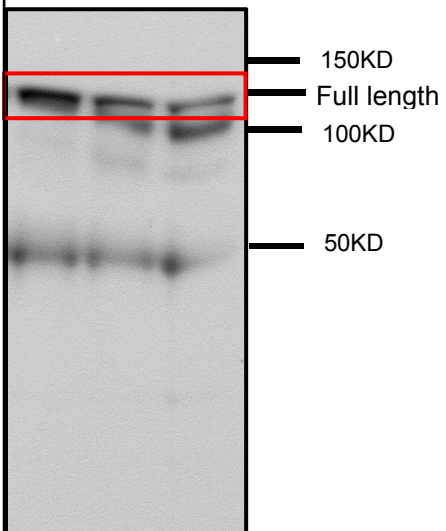
Extended Data Fig. 2n



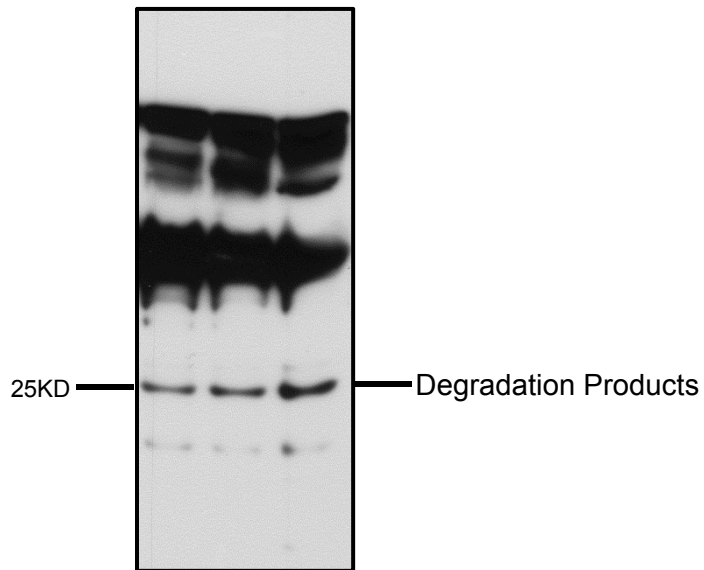
Extended Data Fig. 3e

Anti-HA *HSP104*

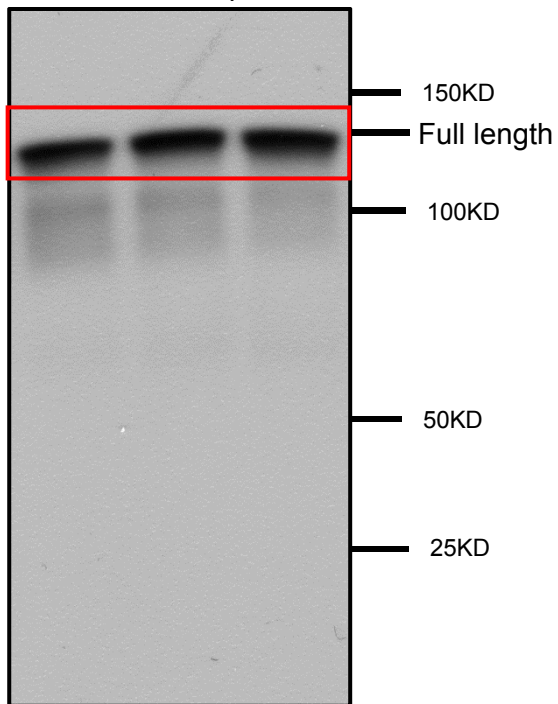
Light exposure



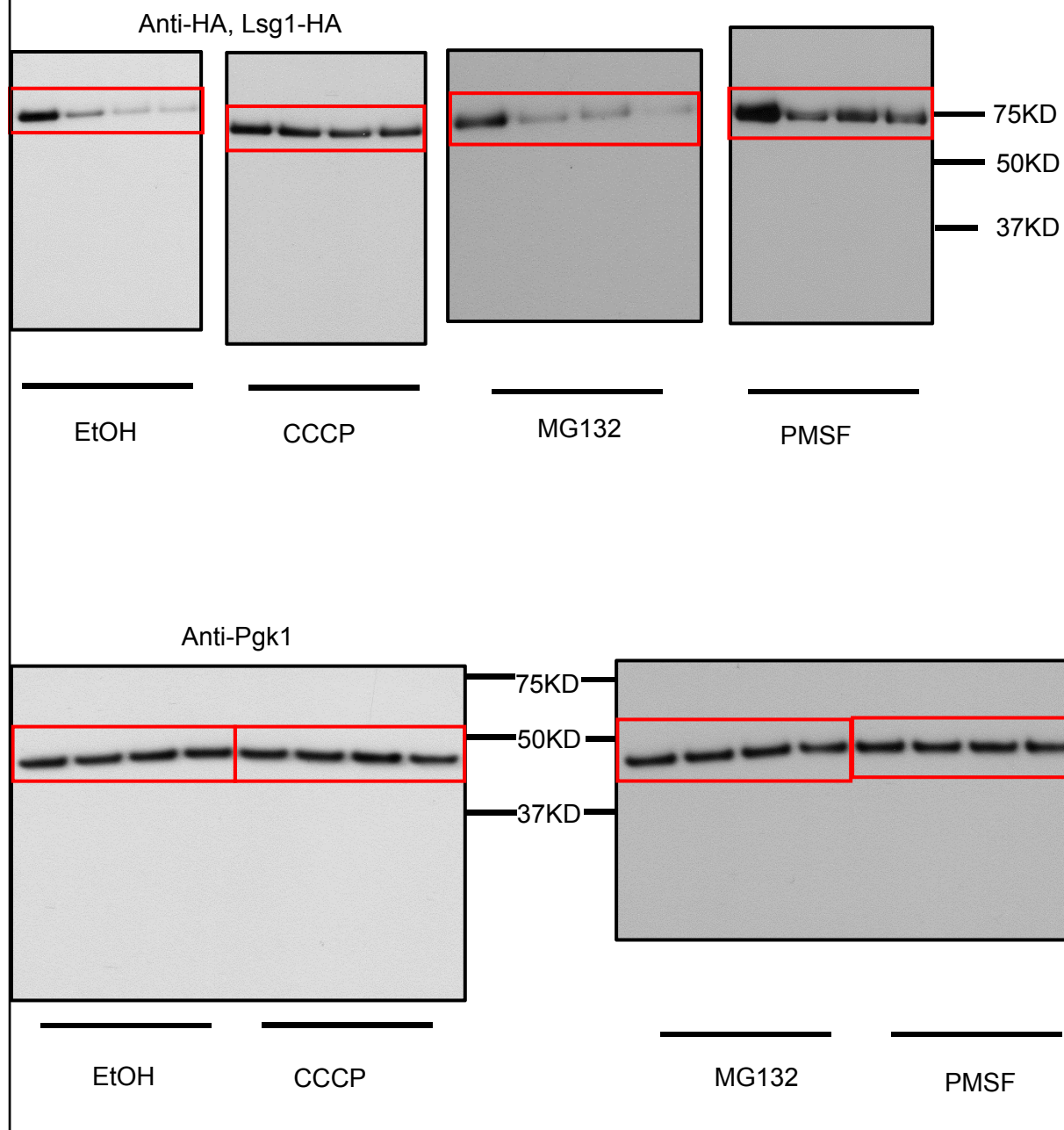
Long exposure



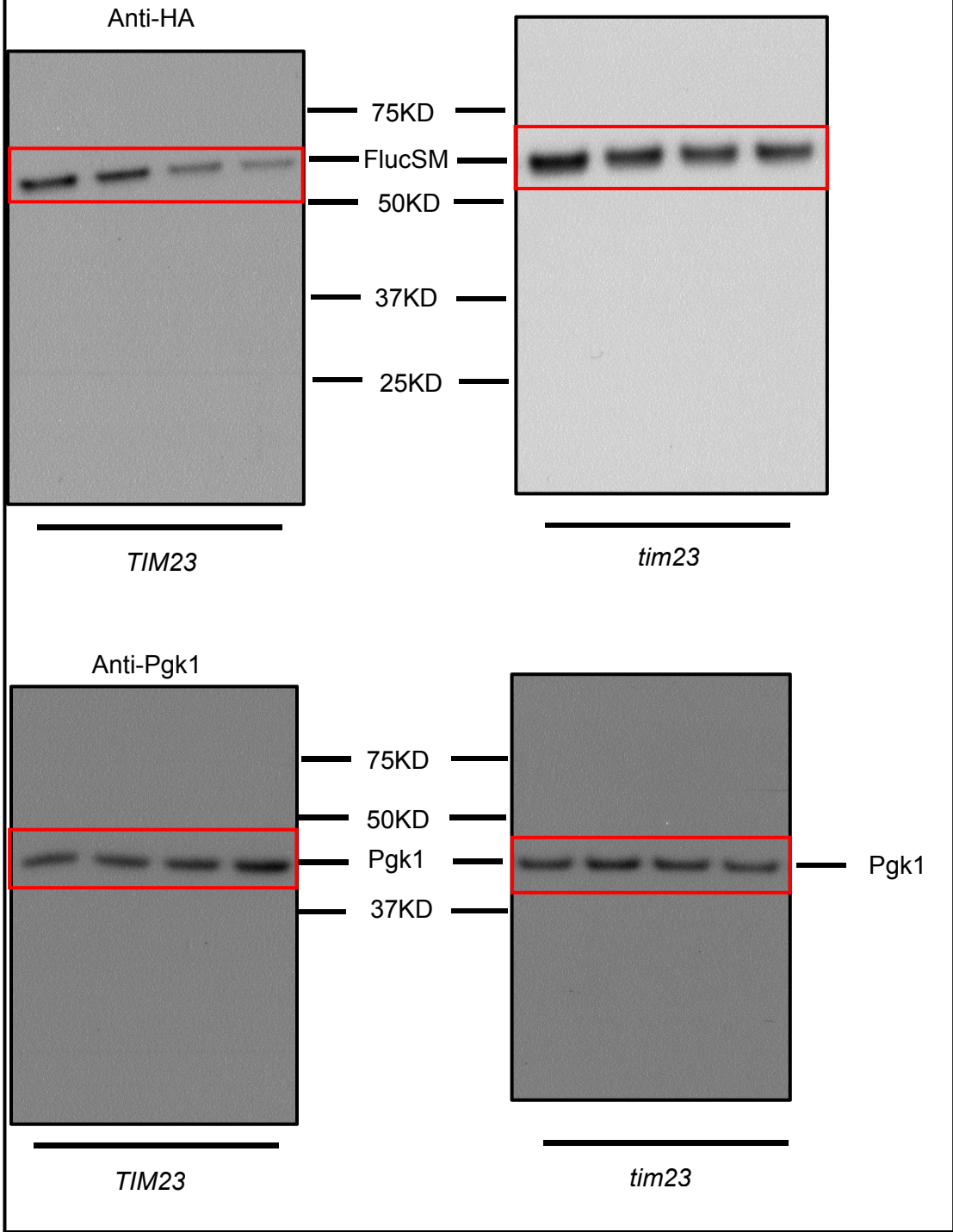
Anti-HA Δ *hsp104*



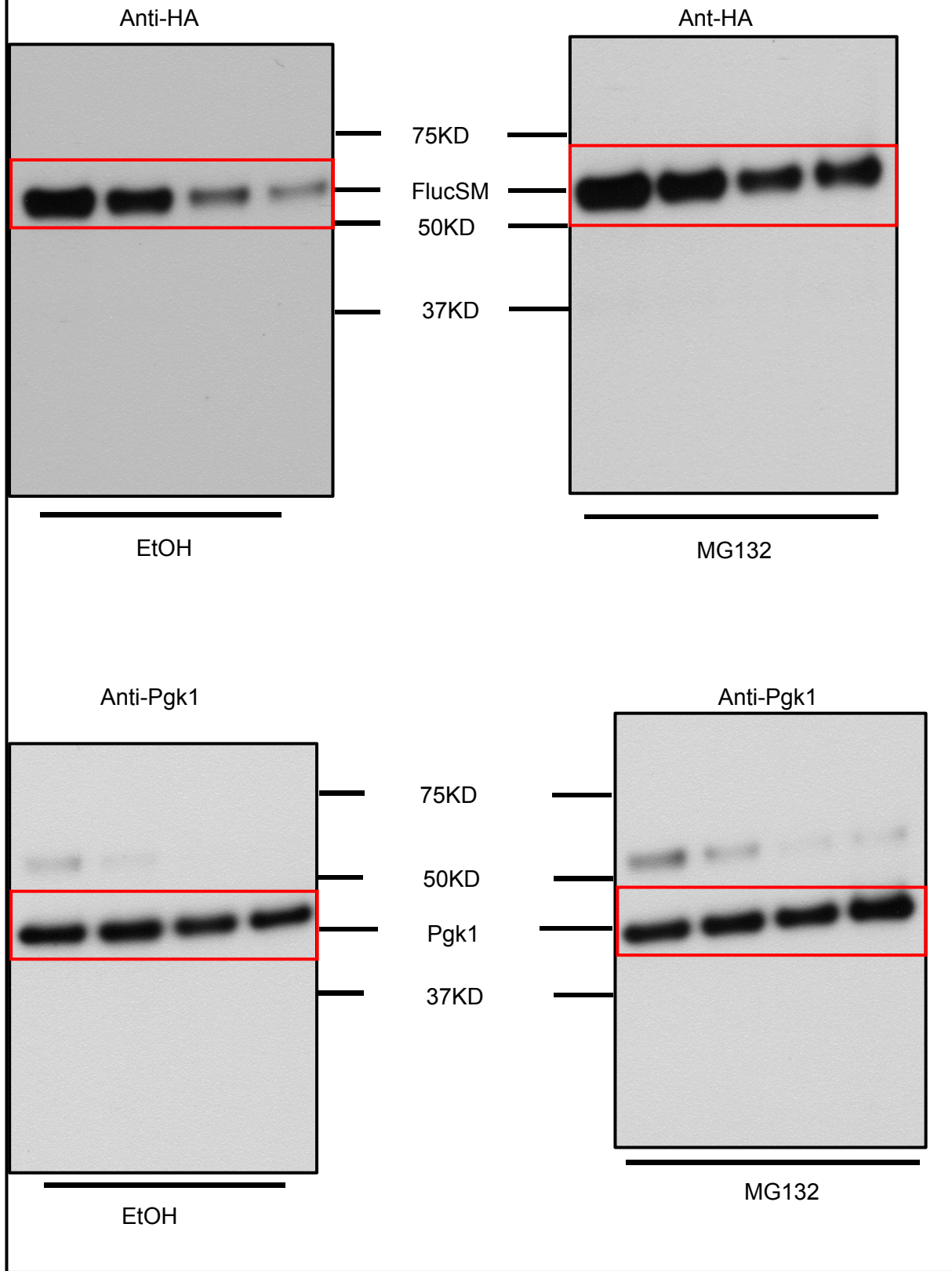
Extended Data Fig. 4e



Extended Data Fig. 4g

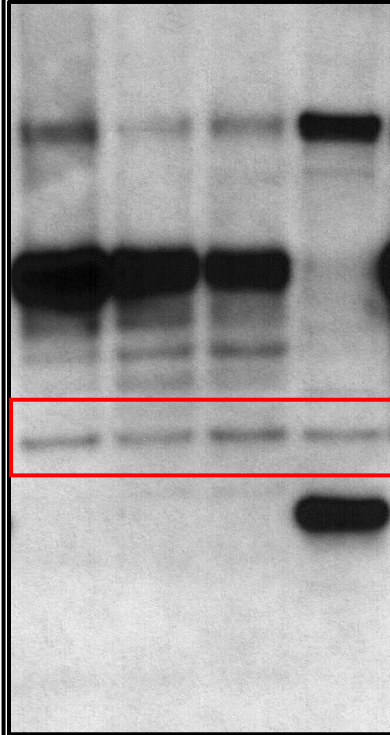


Extended Data Fig. 4i



Extended Data Fig. 6g

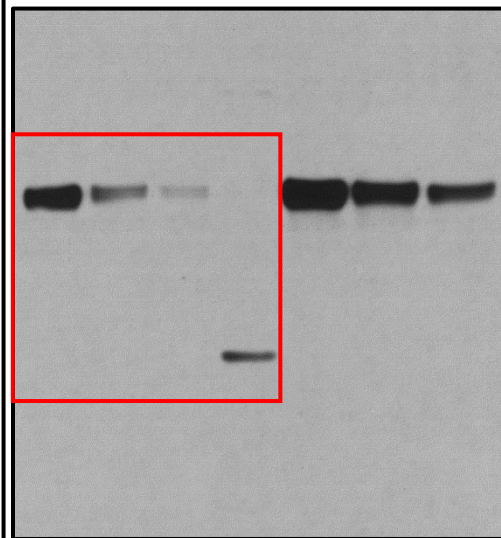
Anti-GAPDH



*Note this is the scan after sequential detection using anti-HA rabbit antibody and anti-GAPDH mouse antibody. GAPDH served as loading control. When being detected by itself, GAPDH showed only a single band around 37KD.

75KD
Fluc-HA-GFP₁₁
50KD
37KD GAPDH
25KD GST-HA-GFP₁₁

Anti-HA



75KD
Fluc-HA-GFP₁₁
50KD
37KD
25KD GST-HA-GFP₁₁