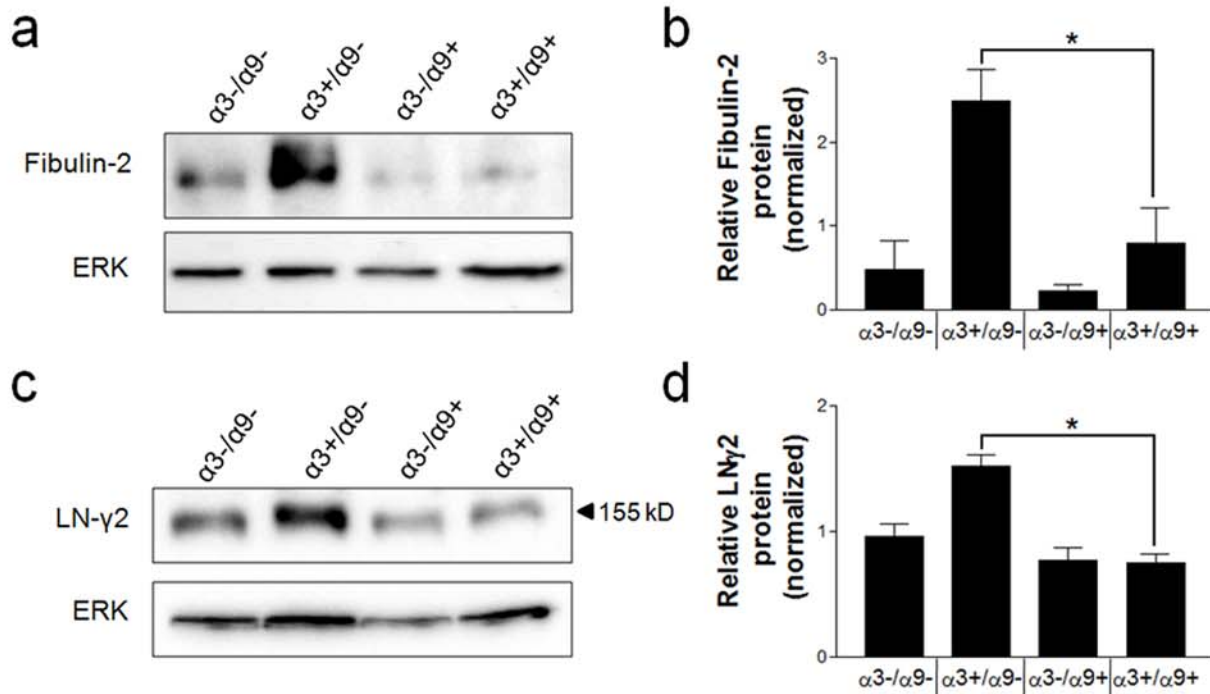


**Figure S1.**  $\alpha 3\beta 1$  promotes, while  $\alpha 9\beta 1$  inhibits, mTLD/BMP-1 secretion by mouse keratinocytes. Relative amount of secreted mTLD/BMP-1 as determined by mass spectrometry of equal protein from serum-free medium conditioned for 24-hours by the indicated MK cell variants. Data are mean  $\pm$  the range of duplicate samples.



**Figure S2.**  $\alpha9\beta1$  suppresses  $\alpha3\beta1$ -dependent induction of fibulin-2 and LN $\gamma$ 2 expression. Whole cell lysates were isolated simultaneously with the matrix preparations used in Figure 3, then assayed by immunoblot for (a,b) fibulin-2 or (c,d) LN $\gamma$ 2, or for total ERK as a normalization control. (a,c) Representative immunoblots are shown. (b,d) Quantification of normalized data from 3 independent experiments corresponding to (a) and (c), respectively. Data are mean  $\pm$  SEM; 1-way ANOVA; Newman-Keuls multiple comparison, \* $P < 0.05$ .