

Probing the folding pathway of a consensus serpin using single tryptophan mutants

Li Yang, James A. Irving, Weiwen Dai, Marie-Isabel. Aguilar and Stephen P. Bottomley

Supplementary Information

Figures

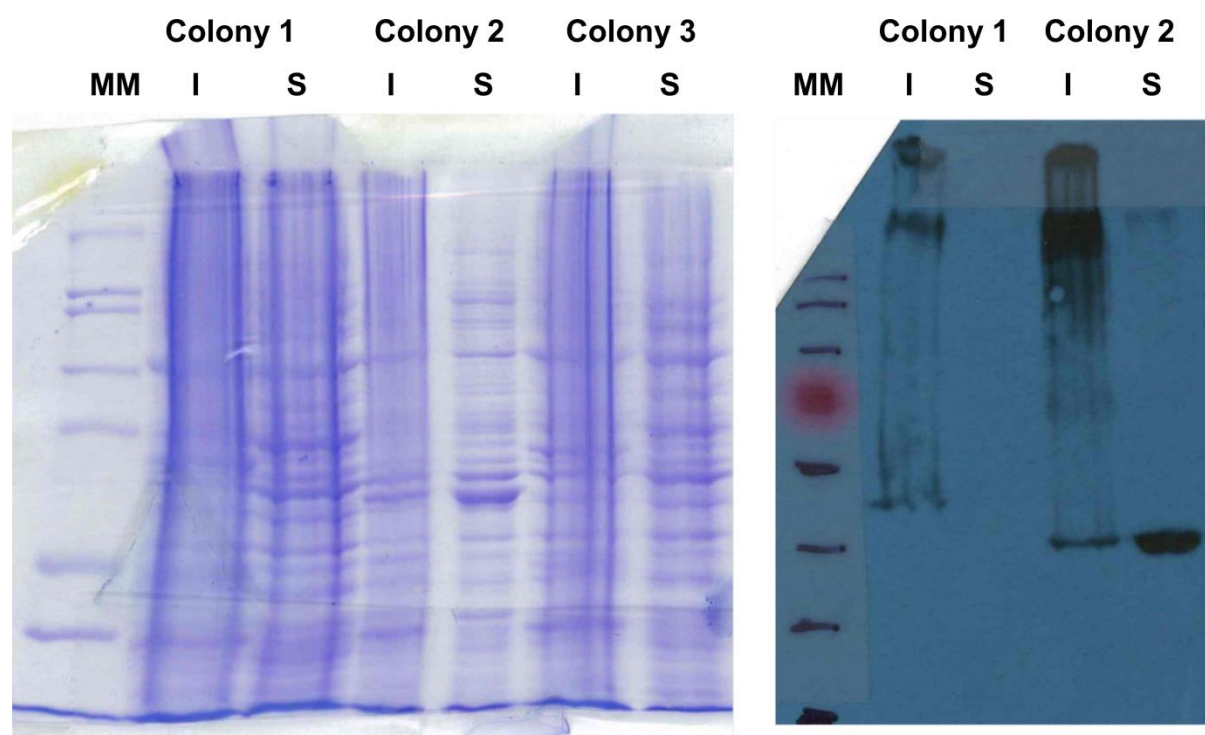


Fig. S1. Uncropped test expression gels for cAT. *Left:* small scale test expressions for selected *E. coli* colonies were resolved by SDS-PAGE. *Right:* the corresponding Western blot for colonies 1 and 2. MM shows the position of the molecular mass standard; I and S are insoluble and soluble fractions, respectively.