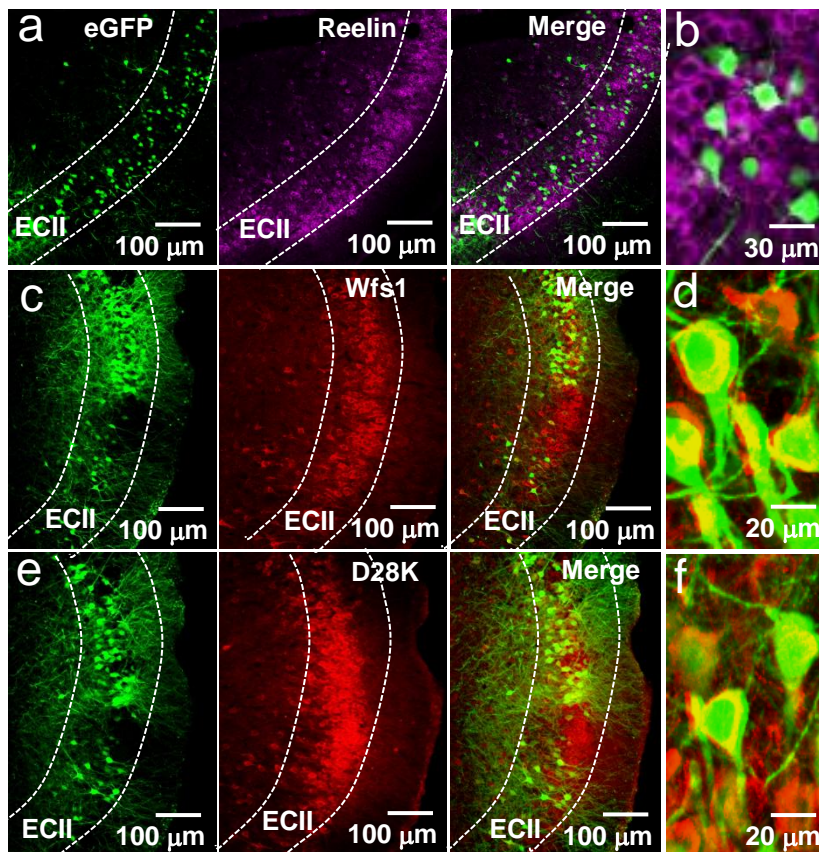


Supplementary Figure S1



Supplementary Figure S1. ECII_{PN} cells are negative to anti-body against reelin, but positive to wfs1 and D28K proteins. (a) Representative images show the eGFP-positive ECII_{PN} (green) in a brain section of the PV^{TVA/G+/+} mice injected with the ΔG-rabies-eGFP virus particles into the CA1 region of the hippocampus. The sections were stained with antibody against reelin (pink). (b) High magnification shows that ECII_{PN} cells are negative to anti-reelin antibody. Similar results were seen in each of the four experiments. (c) Representative images show the eGFP-positive ECII_{PN} (green) in a brain section that was labeled with antibody against wfs1 (red). (d) High magnification shows that ECII_{PN} cells are positive to anti-wfs1 antibody. Similar results were seen in each of the four experiments. (e) Representative images show the eGFP-positive ECII_{PN} (green) in a brain section that was labeled with antibody against D28K (red). (f) High magnification shows that ECII_{PN} cells are positive to anti-D28K antibody. Similar results were seen in each of the four experiments.