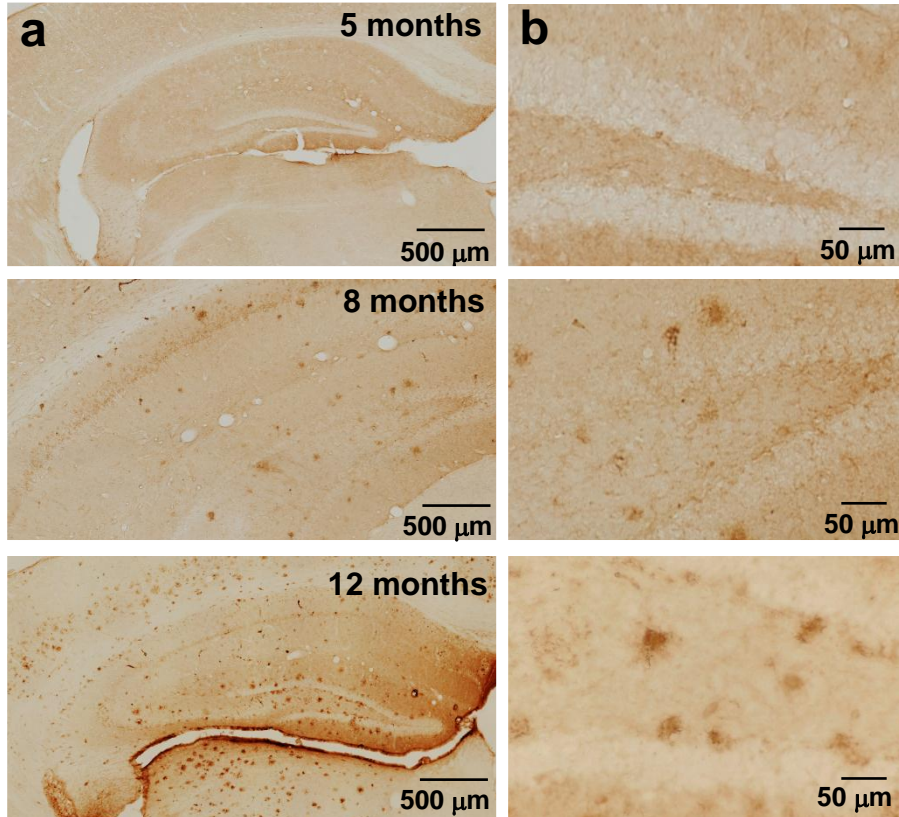


Supplementary Figure S2



**Figure S2.** Plaque distribution in the brain of AD mice. (a) Staining for A $\beta$  with the 4G8 antibody revealed an age-dependent increase in A $\beta$  deposition in the brain particularly in the hippocampus. (b) High magnification shows the plaques in the dentate gyrus area. Numbers of mice analyzed: at 5 months, n = 6; at 8 months, n = 5; and at 12 months, n = 3.