

1 **Supplementary Figures**

2 **Figure S1.** Pan-genome size and average of new genes based on sequential addition of sequenced
3 genomes of *B. animalis* (panel a), *B. bifidum* (panel b), *B. breve* (panel c) and *B. longum* (panel d).

4

5 **Figure S2.** Pan-genome size and average of new genes based on sequential addition of sequenced
6 genomes of *B. adolescentis* (panel a), *B. asteroides* (panel b), *B. dentium* (panel c), *B. pseudocatenulatum*
7 (panel d), *B. pseudolongum* (panel e) and *B. thermophilum* (panel f).

8

9 **Figure S3.** Clusters based on ANI values between *B. adolescentis* (panel a), *B. animalis* (panel b), *B.*
10 *asteroides* (panel d) and *B. dentium* (panel c) strains.

11

12 **Figure S4.** Clusters based on ANI values between *B. bifidum* (panel a) and *B. breve* (panel b) strains.

13

14 **Figure S5.** Clusters based on ANI values between *B. longum* strains.

15

16 **Figure S6.** Clusters based on ANI values between *B. pseudocatenulatum* (panel c), *B. pseudolongum*
17 (panel a) and *B. thermophilum* (panel b) strains.

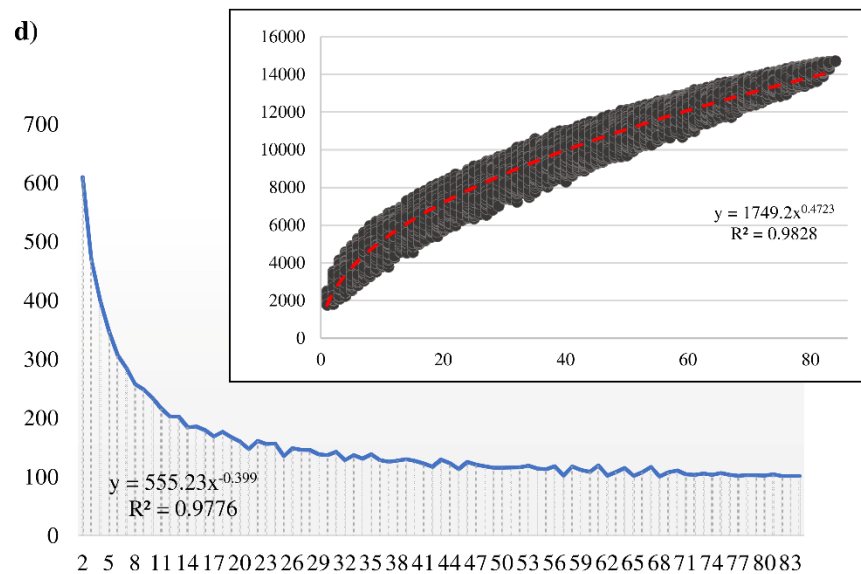
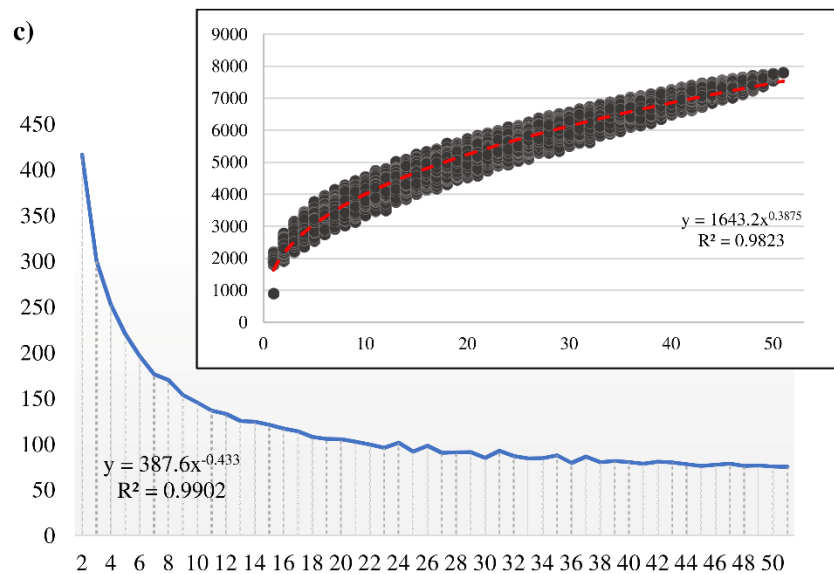
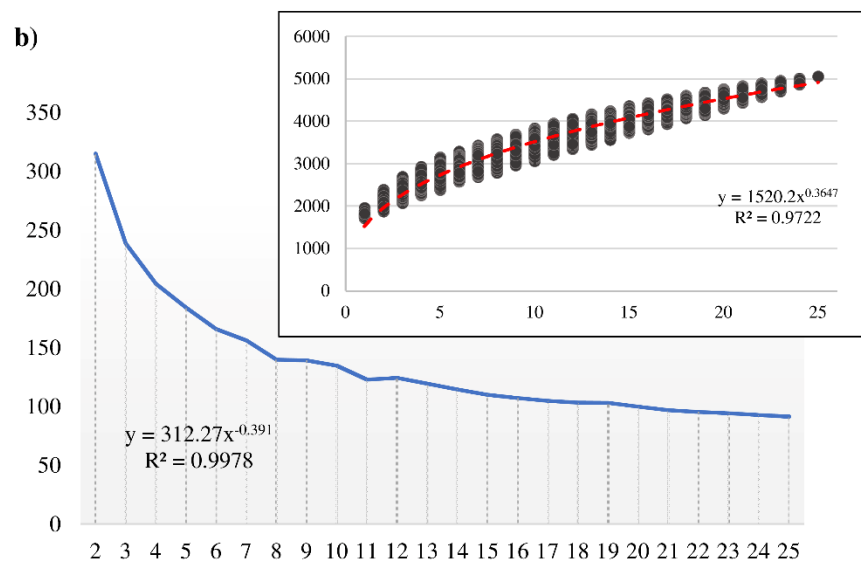
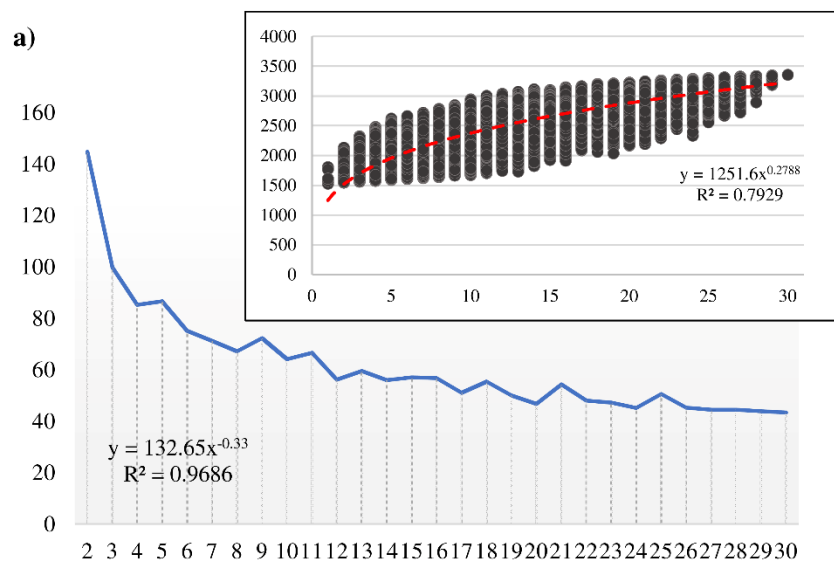


Figure S1

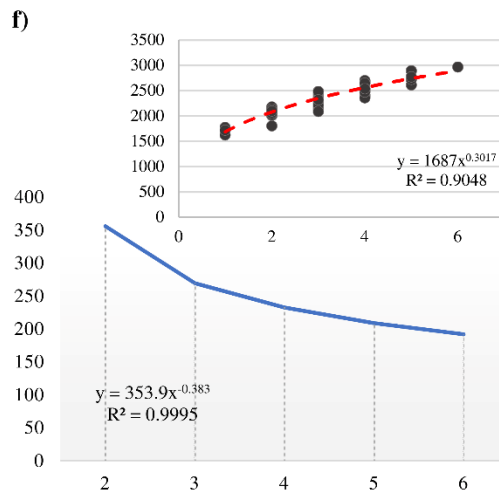
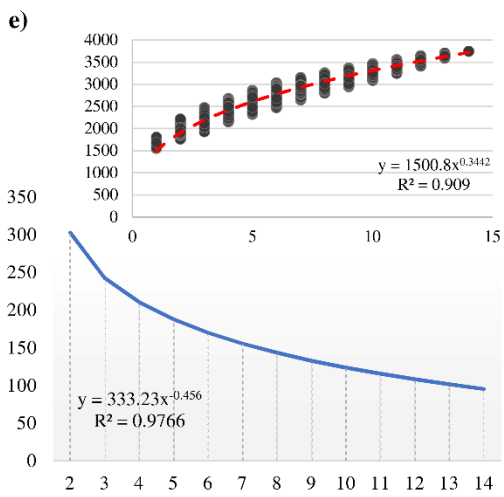
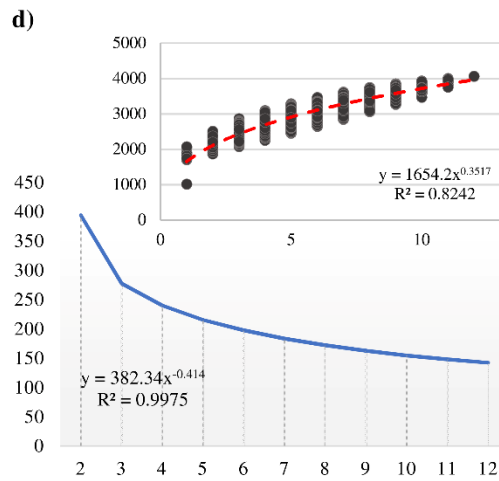
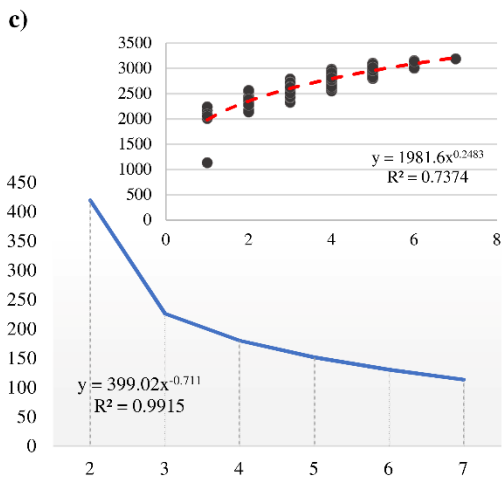
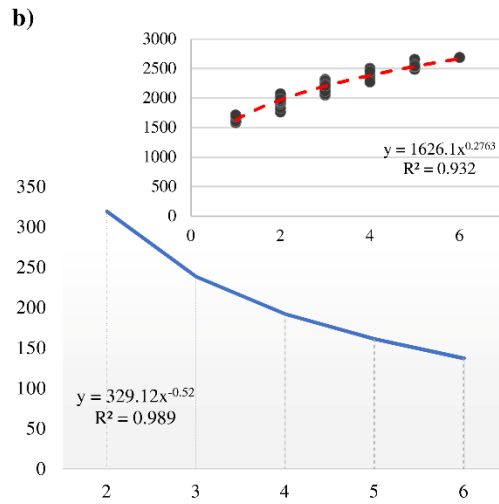
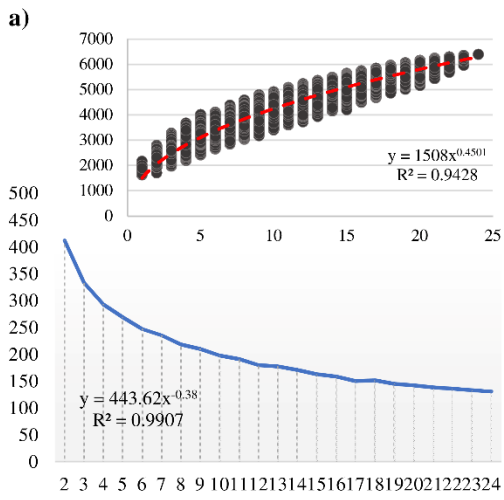


Figure S2

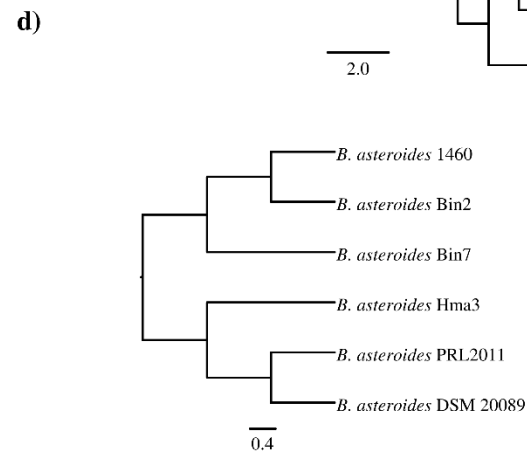
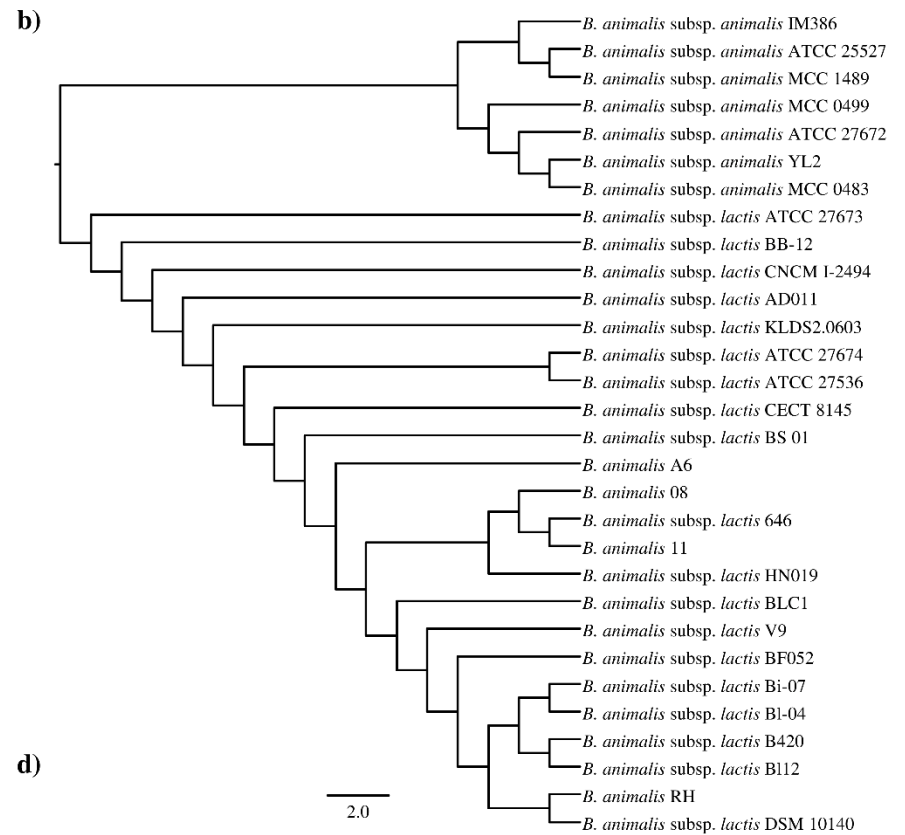
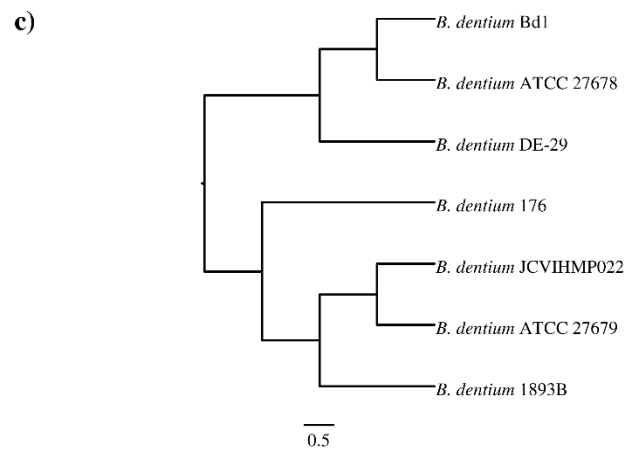
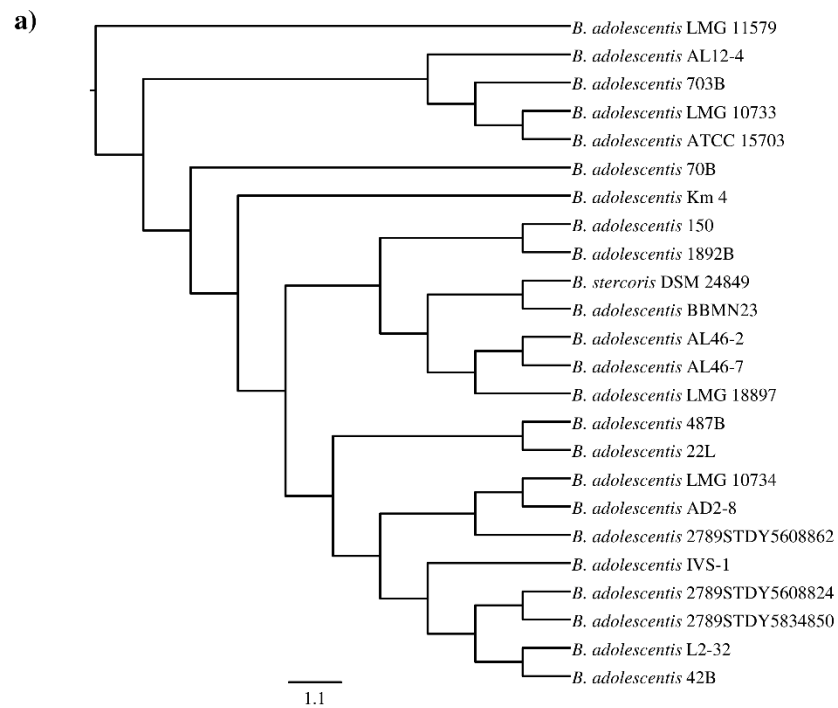


Figure S3

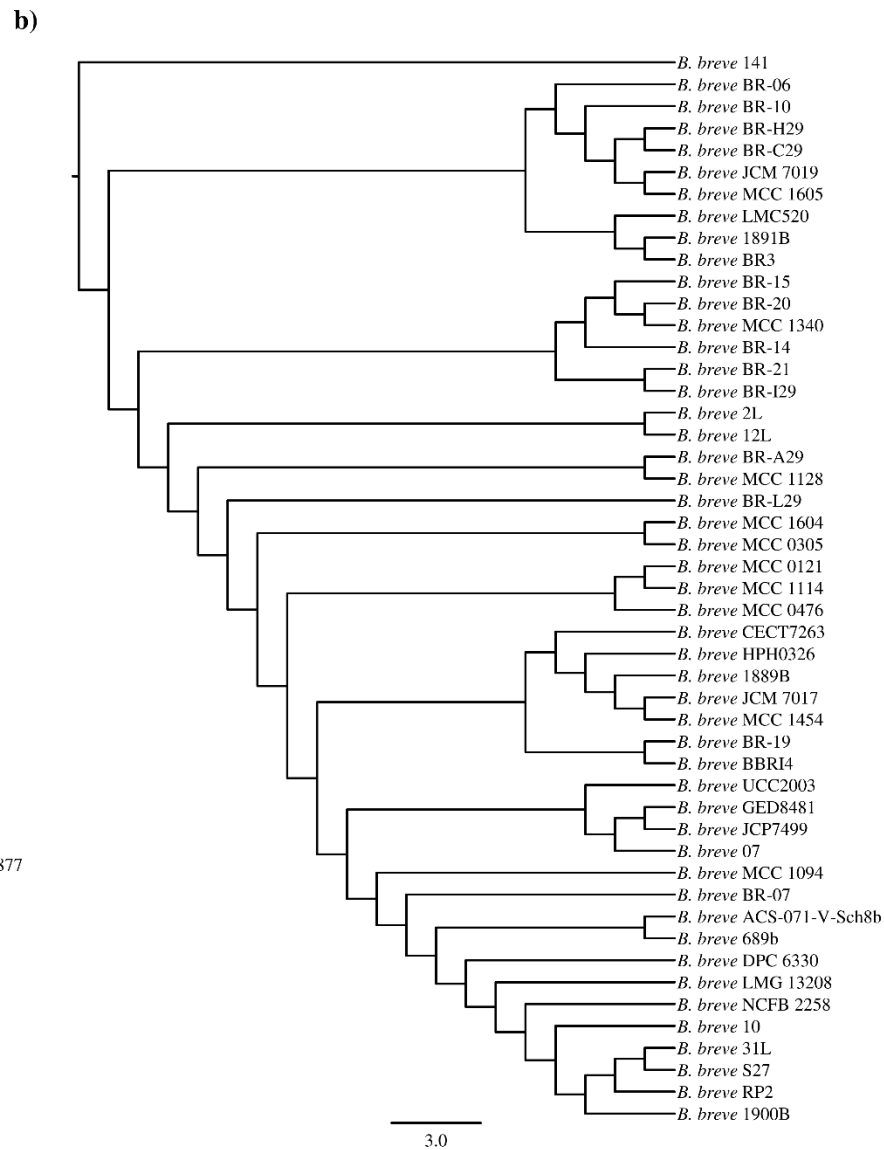
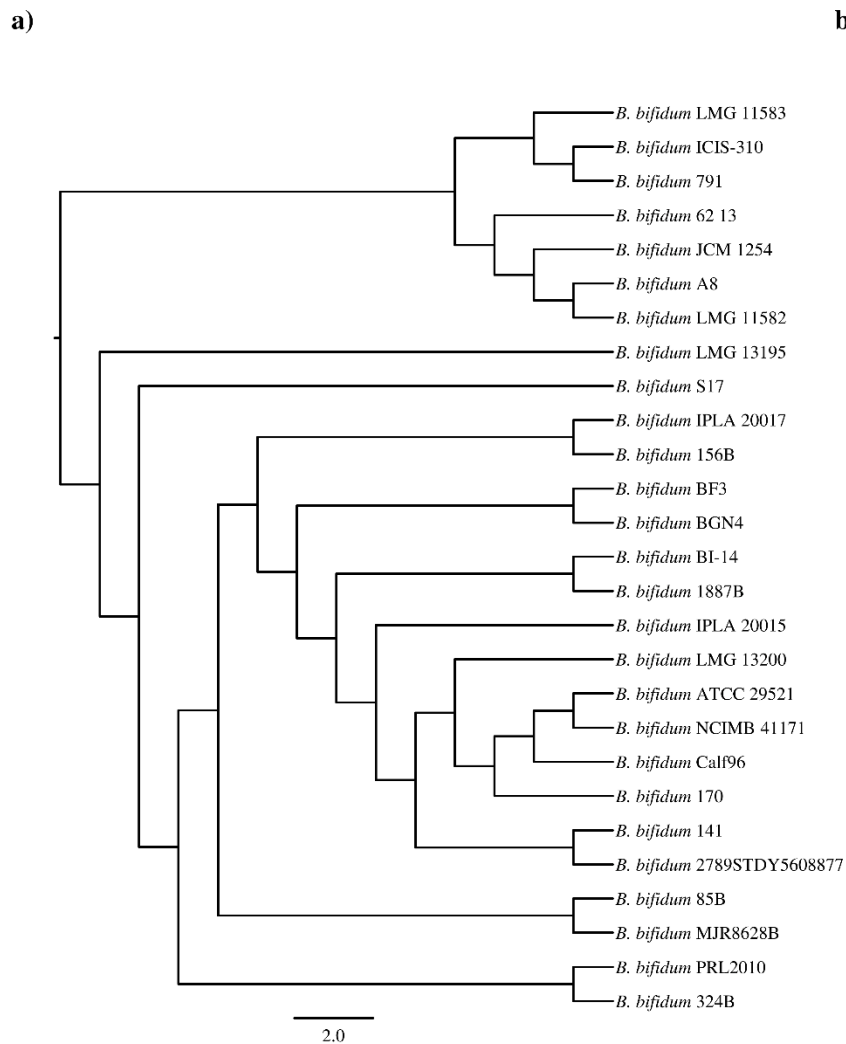
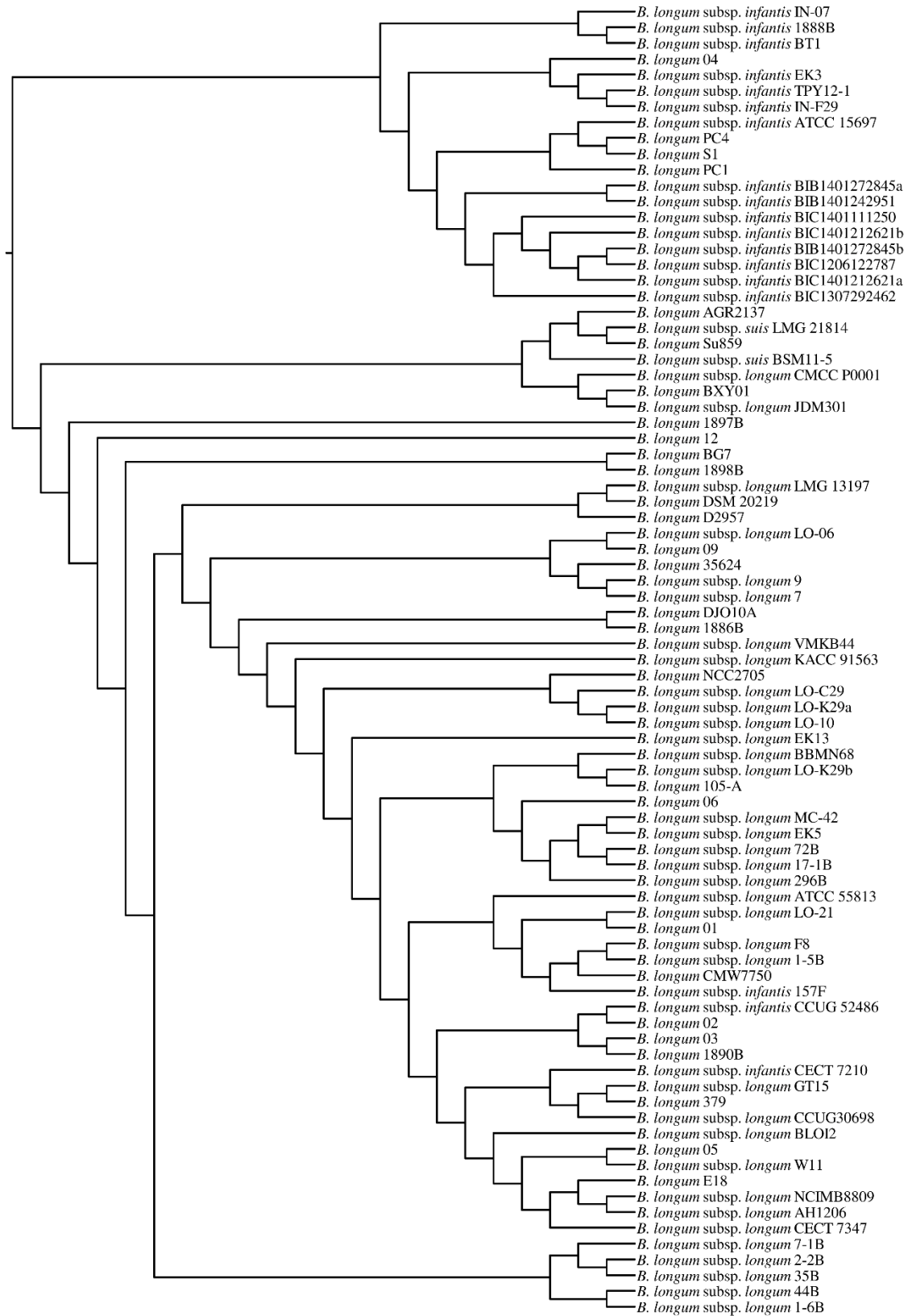


Figure S4



3.0

Figure S5

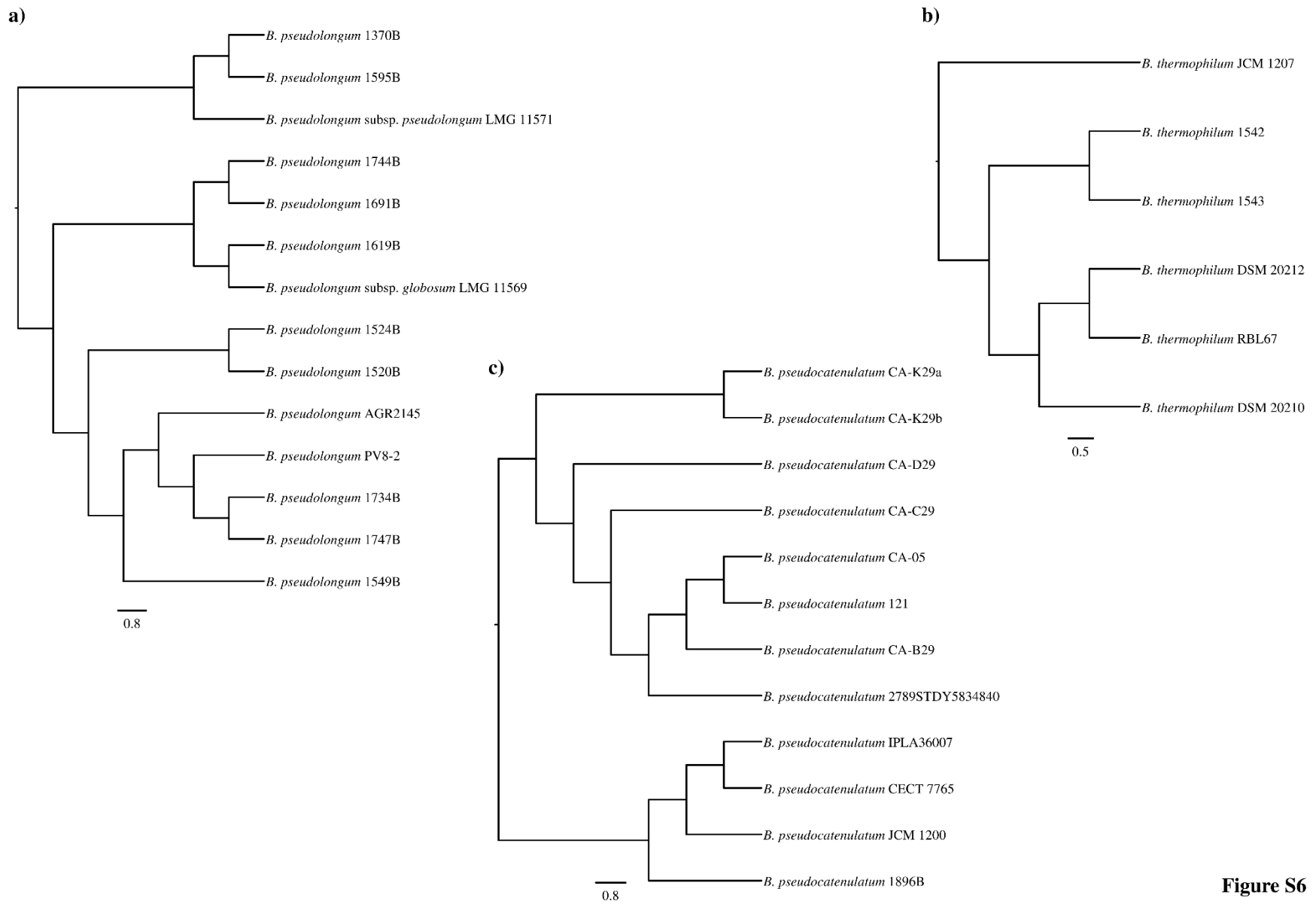


Figure S6