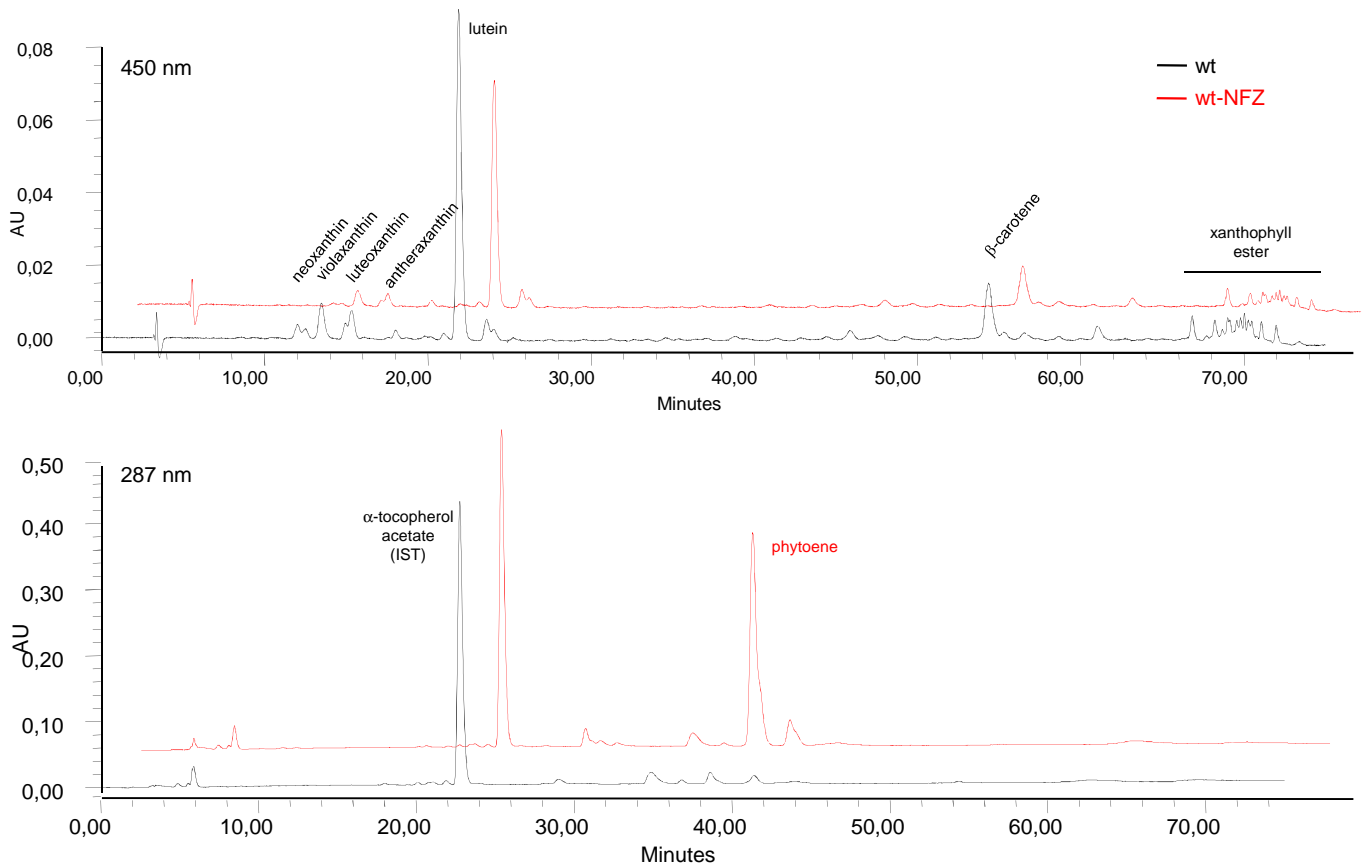


Supplemental Figure S3



Supplemental Figure S3: HPLC chromatograms of Arabidopsis WT callus extracts

Arabidopsis WT seeds were germinated for 5 days on callus-inducing medium, transferred onto fresh medium (black line) or medium with 1 μ M norflurazon (NFZ, red line) and developed further for 14 days in darkness. HPLC chromatograms at 450 nm (top) and 287 nm (bottom) are shown and most abundant carotenoids are indicated. IST, internal standard.