

Laminar Flow Attenuates Macrophage Migration Inhibitory Factor Expression in Endothelial Cells

Congzhen Qiao^{1,2}, Shengdi Li^{3,4}, Haocheng Lu⁵, Fan Meng⁶, Yanbo Fan⁵, Yanhong Guo⁵, Y. Eugene Chen^{1, 5, *}, Jifeng Zhang^{5, *}

Affiliations:

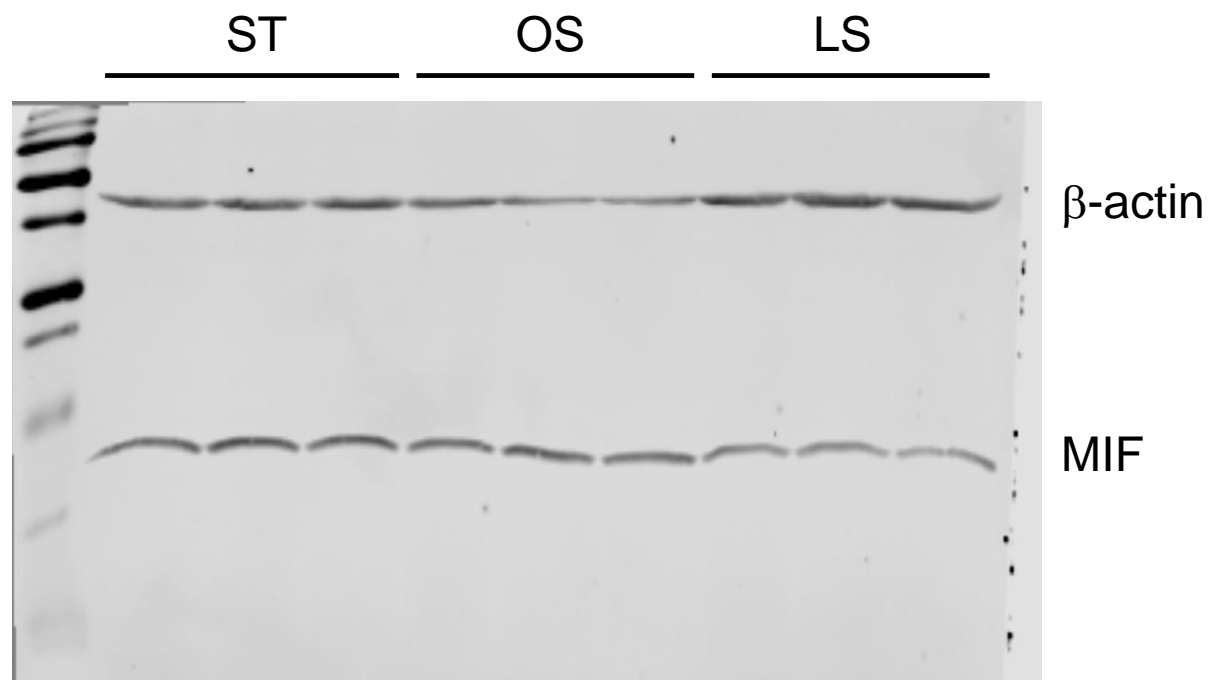
1. Department of Pharmacology, University of Michigan Medical Center, Ann Arbor, Michigan, 48109, USA
2. Shanghai Jiao Tong University School of Medicine, Shanghai, 200025, China
3. Key Lab of Computational Biology, CAS-MPG Partner Institute for Computational Biology, Shanghai Institutes for Biological Sciences, Chinese Academy of Sciences, Shanghai, 200031, China
4. University of Chinese Academy of Sciences, Beijing, 100049, China
5. Frankel Cardiovascular Center, Department of Internal Medicine, University of Michigan Medical Center, Ann Arbor, Michigan, 48109, USA
6. Department of Psychiatry and Molecular and Behavioral Neuroscience Institute, University of Michigan Medical Center, Ann Arbor, Michigan, 48109, USA

* Correspondence and requests for materials should be addressed to JZ (email: jifengz@umich.edu) or YEC (email: echenum@umich.edu)

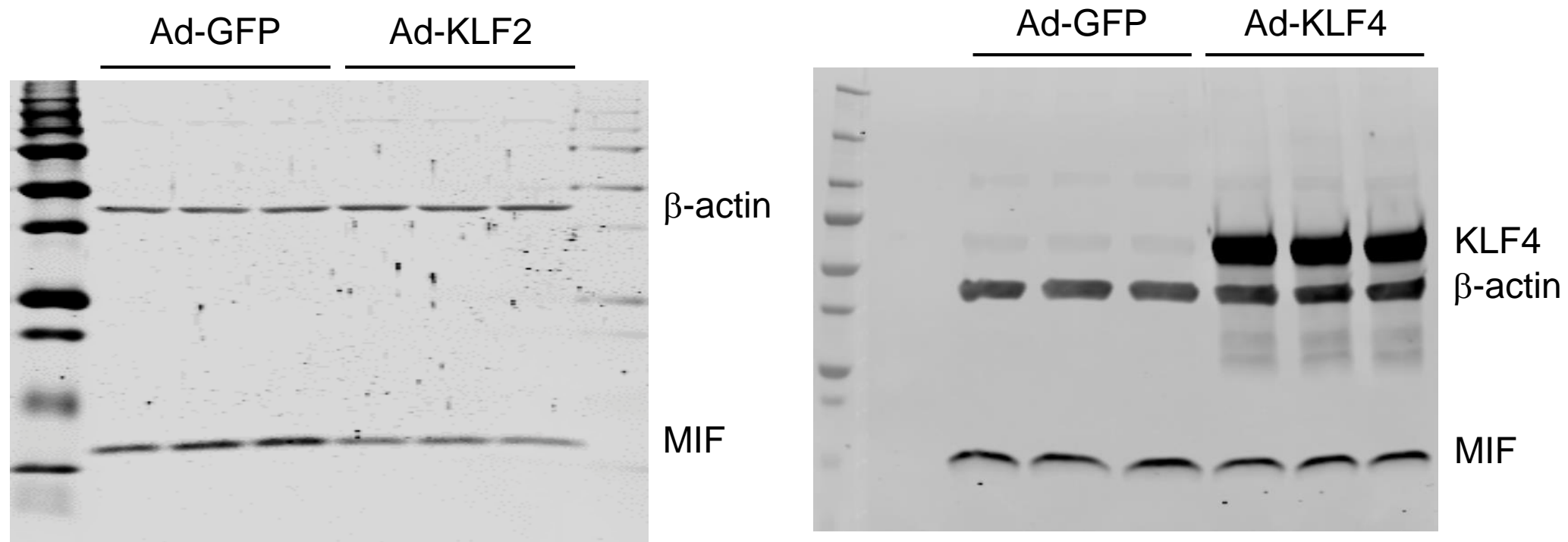
Supplementary table 1. Primers used for PCR

Gene Name	Species	Forward	Reverse
KLF2	human	5'-CTACACCAAGAGTTCGCATCTG-3'	5'-GTGCCGTTTCATGTGCAG-3'
ACTB	human	5'-TGACATTAAGGAGAAGCTGTGC-3'	5'-TGGAGTTGAAGGTAGTTTCGTG-3'
MIF	human	5'-ATGTTTCATCGTAAACACCAACG-3'	5'-CTTGCTGTAGGAGCGGTTCTG-3'
HPRT1	human	5'-TCGAGATGTGATGAAGGAGATG-3'	5'-TTTATGTCCCCTGTTGACTGGT-3'
18S	human	5'-GGAAGGGCACCACCAGGAGT-3'	5'-TGCAGCCCCGGACATCTAAG-3'
ChIP-MIF-Promoter	human	5'-TTGTCCTCTTCCTGCTATGTCA-3'	5'-GGTAAACTCGGGGACCATCTA-3'
ChIP-MIF-Neg-ctrl	human	5'-TCATCTTCAAAGCCGGTAATG-3'	5'-AGGGAGATTAGCATGGAGCAT-3'

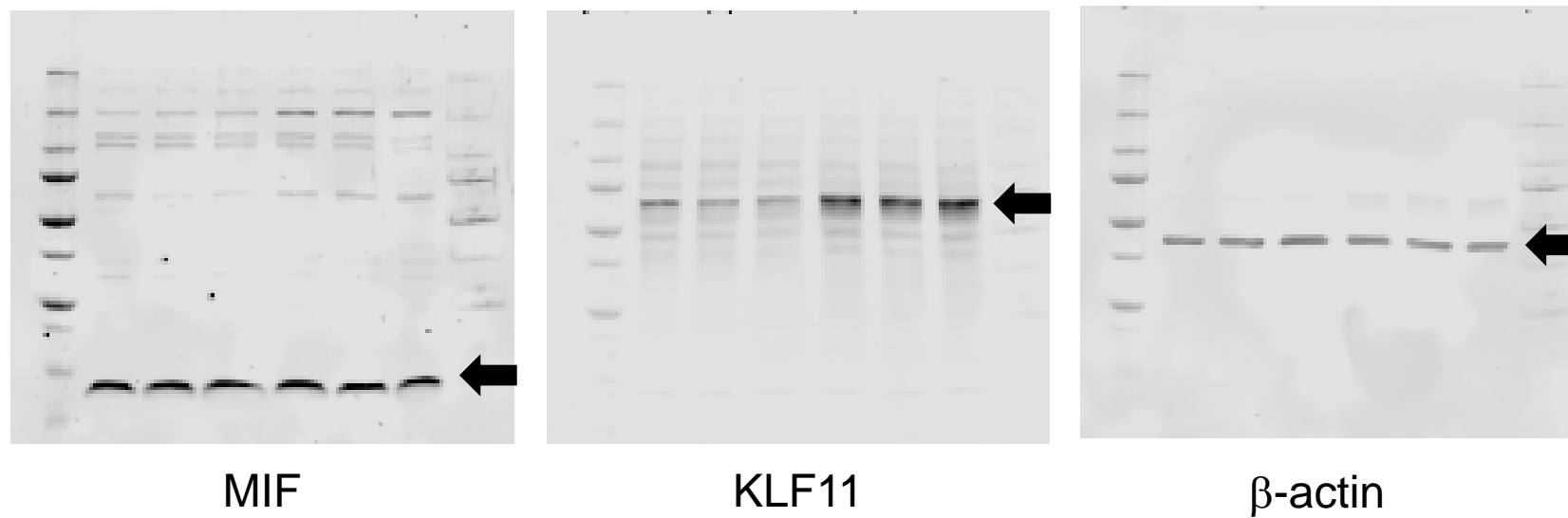
Supplemental figure 1. Whole blot for Figure 2B



Supplemental figure 2. Whole blot for Figure 3C



Supplemental figure 3. Whole blot for Figure 3C



Supplemental figure 4. Whole blot for Figure 4C

