

Supplementary information, Figure S7

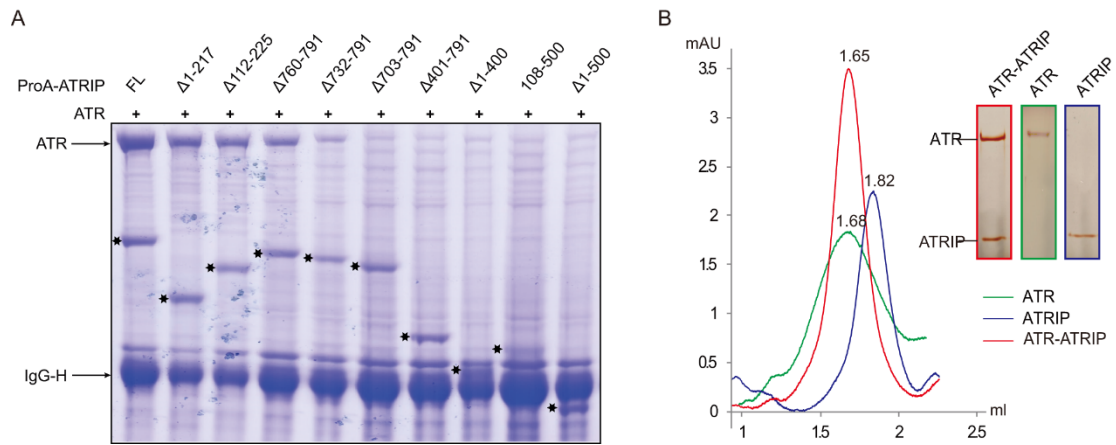


Figure S7 Interactions between ATR and ATRIP in the complex. (A) Co-immunoprecipitations of full-length ATR and various ATRIP constructs. ATR and various ATRIP truncations were co-transfected into 293F cells and ATRIP proteins (containing Protein A tag, ProA for simplicity) were immobilized using IgG resins. The bound proteins were subjected to SDS-PAGE and stained by Coomassie blue. The position of full-length ATR is indicated with arrow and various ProA-ATRIP proteins are indicated with stars. (B) Comparison of gel-filtration (Suprose 6 increase, 5/150 GL, GE Healthcare) profiles of ATR-ATRIP, ATR alone, and ATRIP alone. The peak positions are indicated and representative peak fractions were subjected to SDS-PAGE and visualized by silver-staining. Note that ATR and ATR-ATRIP complex migrated to similar position, indicating that ATR alone forms dimer in solution.