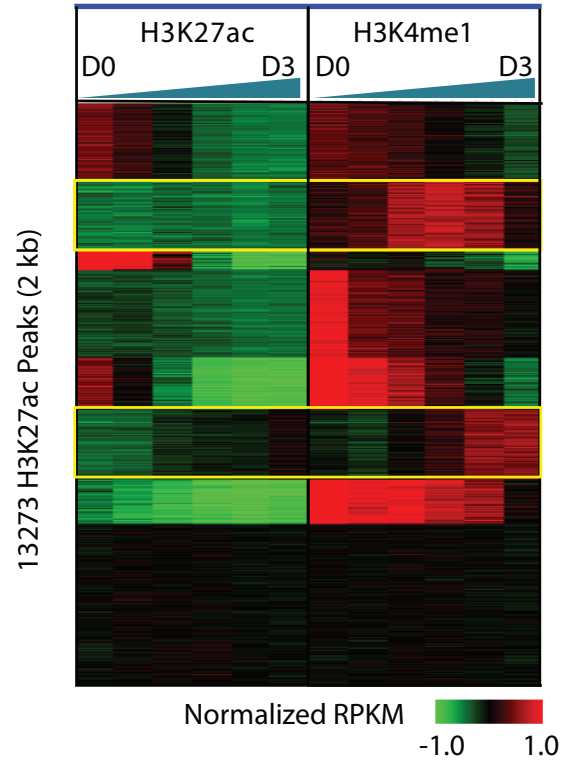
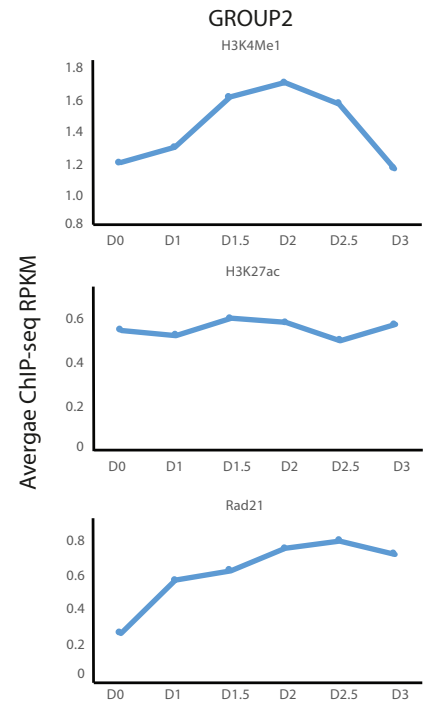


Figure S6

A



B



C

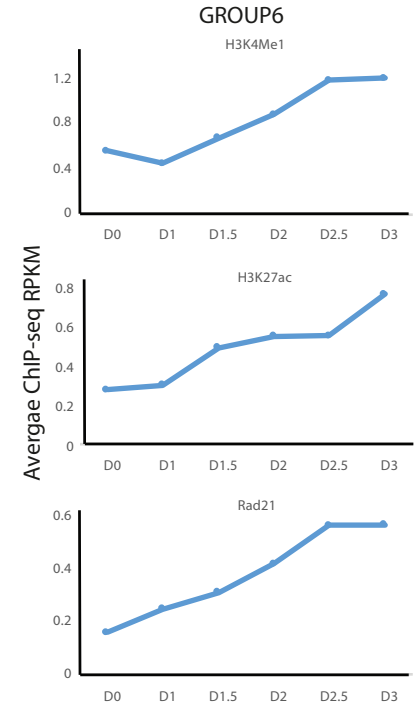


Figure S6. Change of H3K4me1 is Associated with Change of Cohesin Binding, Related to Figure 5

(A) Clustering analysis showing that H3K4me1 peaks could be classified to 8 different groups per change in both H3K27ac and H3K4me1 signal in WT cells during differentiation. The color key shows the log₂ transformed input normalized RPKM value of each peak. Note that Group2 peaks show only H3K4me1 peaks are induced along differentiation while H3K27ac remain unchanged and low; Group 6 peaks show induction of both H3K4me1 and H3K27ac signals.

(B) Average ChIP signals of all peaks in Group2 during NPC differentiation. Top: change of H3K4me1 signals. Middle: change of H3K27ac signals. Bottom: change of Rad21 signals. Note that Cohesin subunit Rad21 signal increased, while H3K27ac remained relatively unchanged.

(C) Average ChIP signals of all peaks in Group6 during NPC differentiation, similar to (B). Note that signal for H3K4me1, Rad21 and H3K27ac all increased in this group during differentiation.