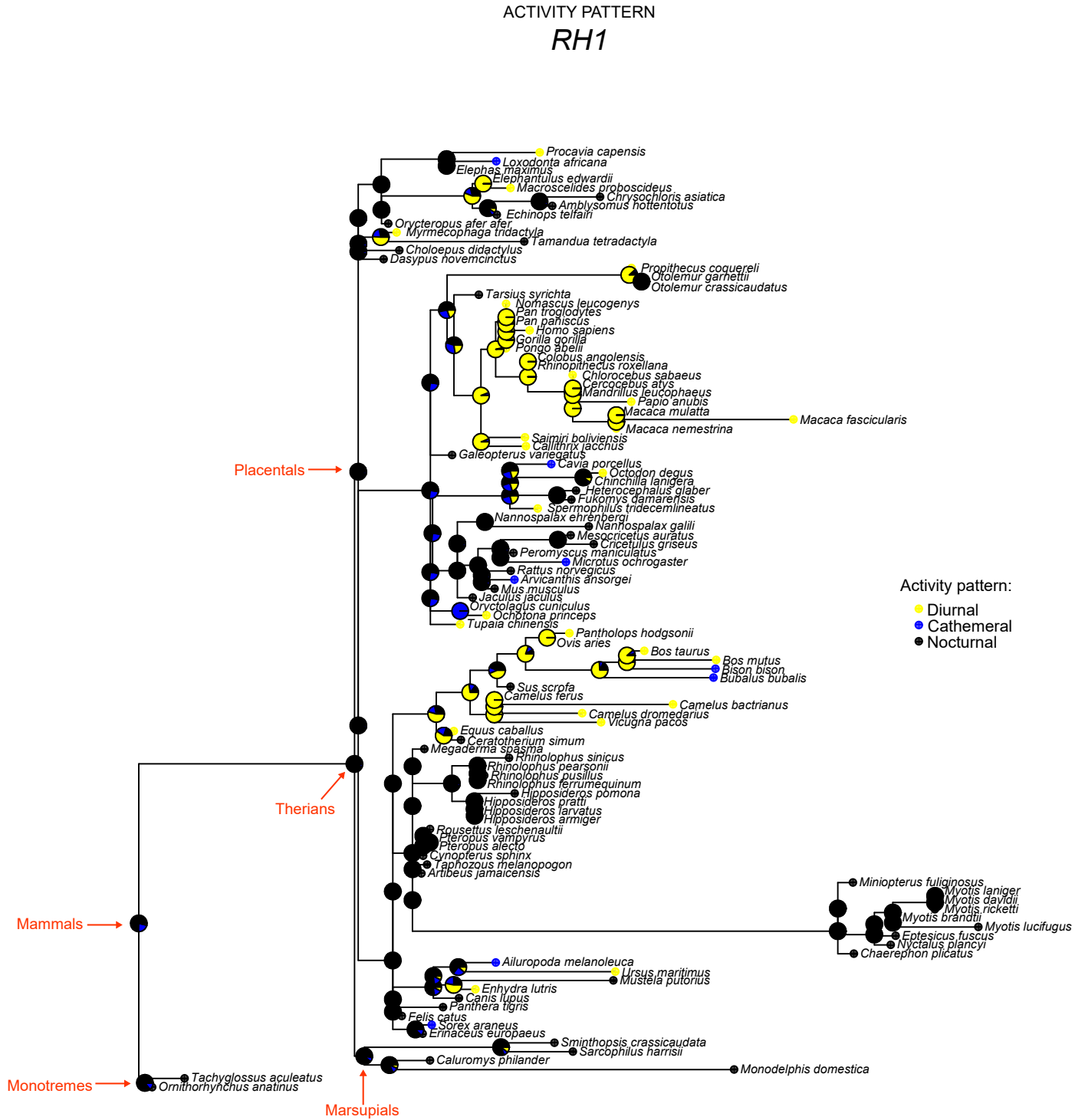


# Adaptive genomic evolution of opsins reveals that early mammals flourished in nocturnal environments

Rui Borges, Warren E. Johnson, Stephen J. O'Brien, Cidália Gomes, Christopher P. Heesy and Agostinho Antunes

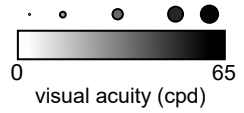
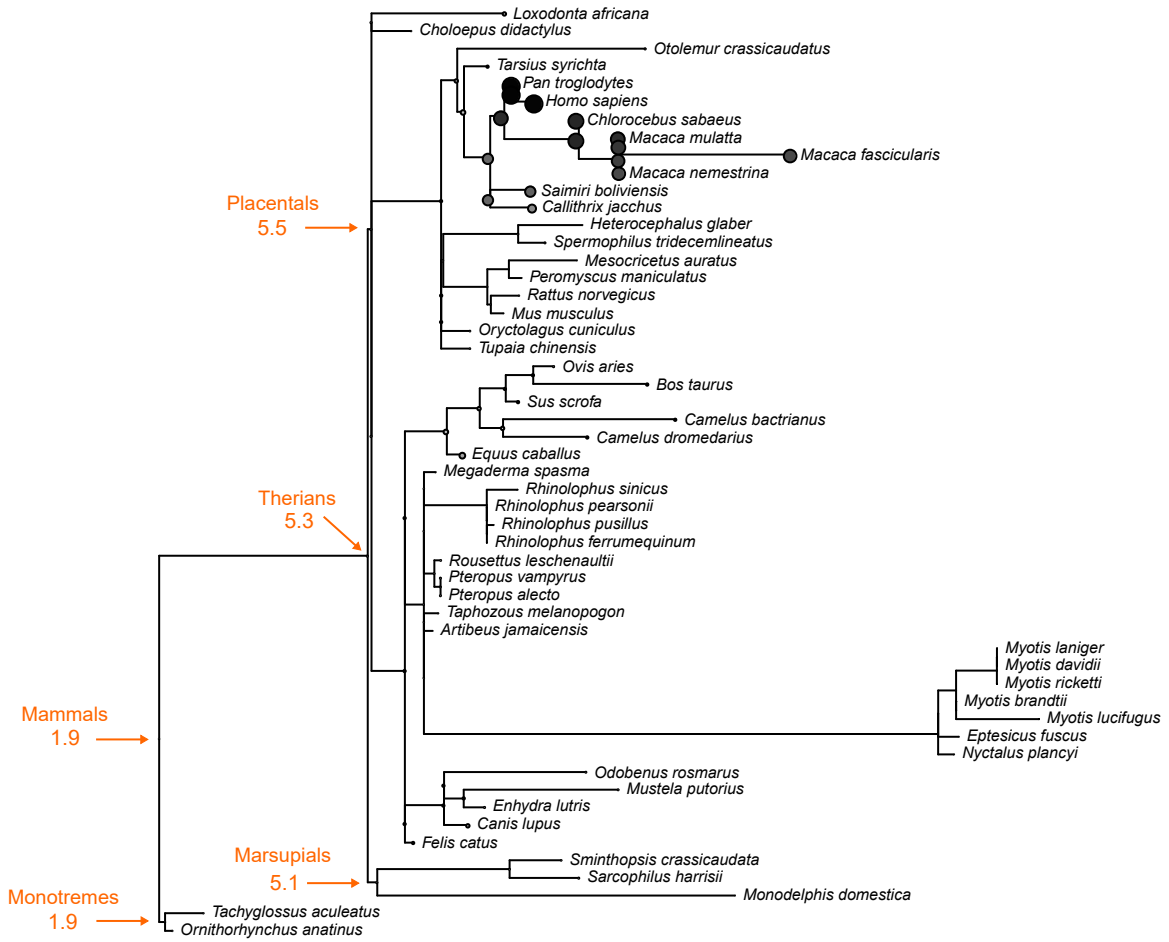
Figure S2

Phylogenetic character mapping for the ancestral reconstructions

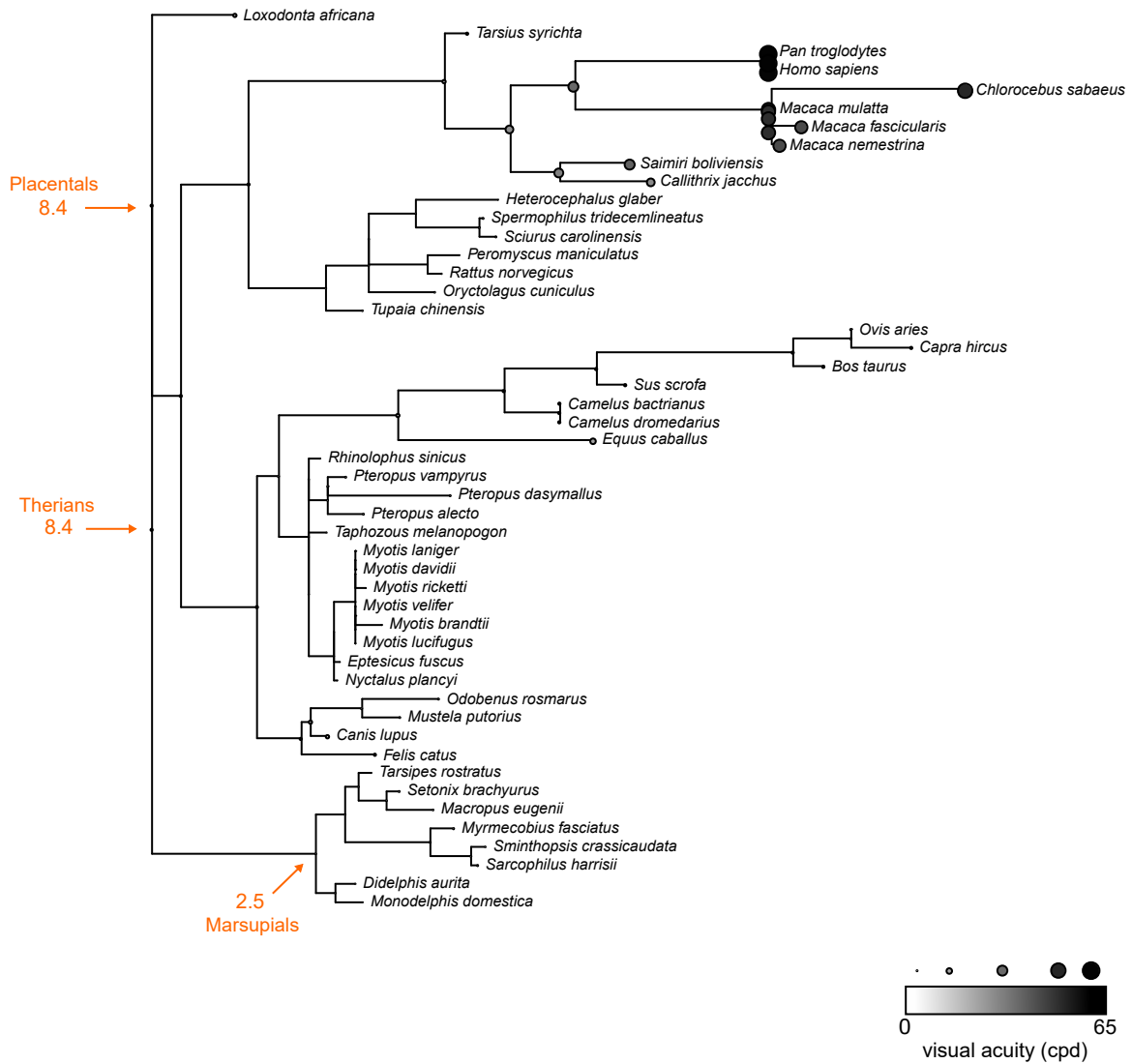




VISUAL ACUITY  
RH1

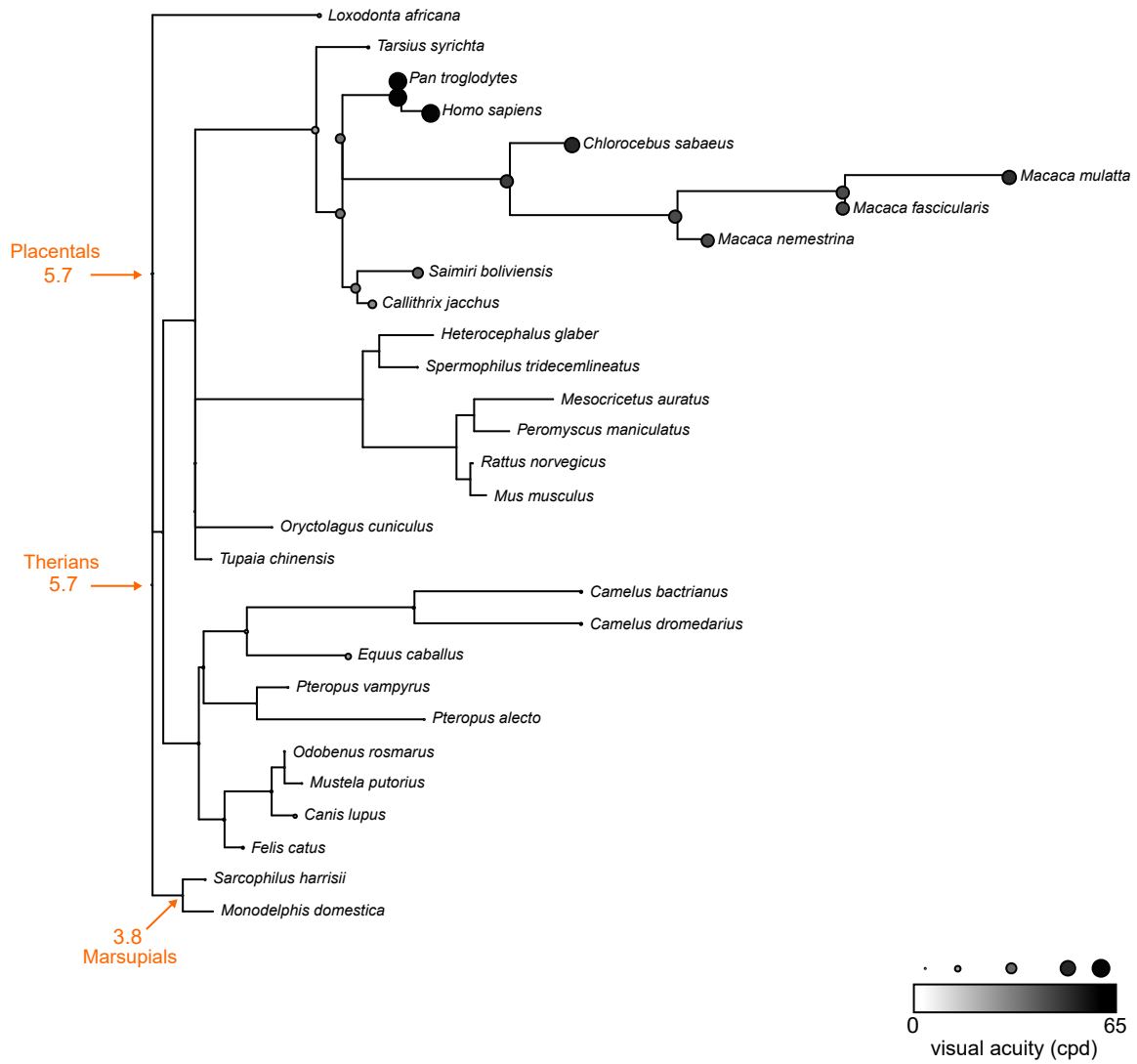


VISUAL ACUITY  
*OPN1sw1*

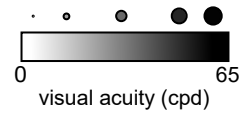
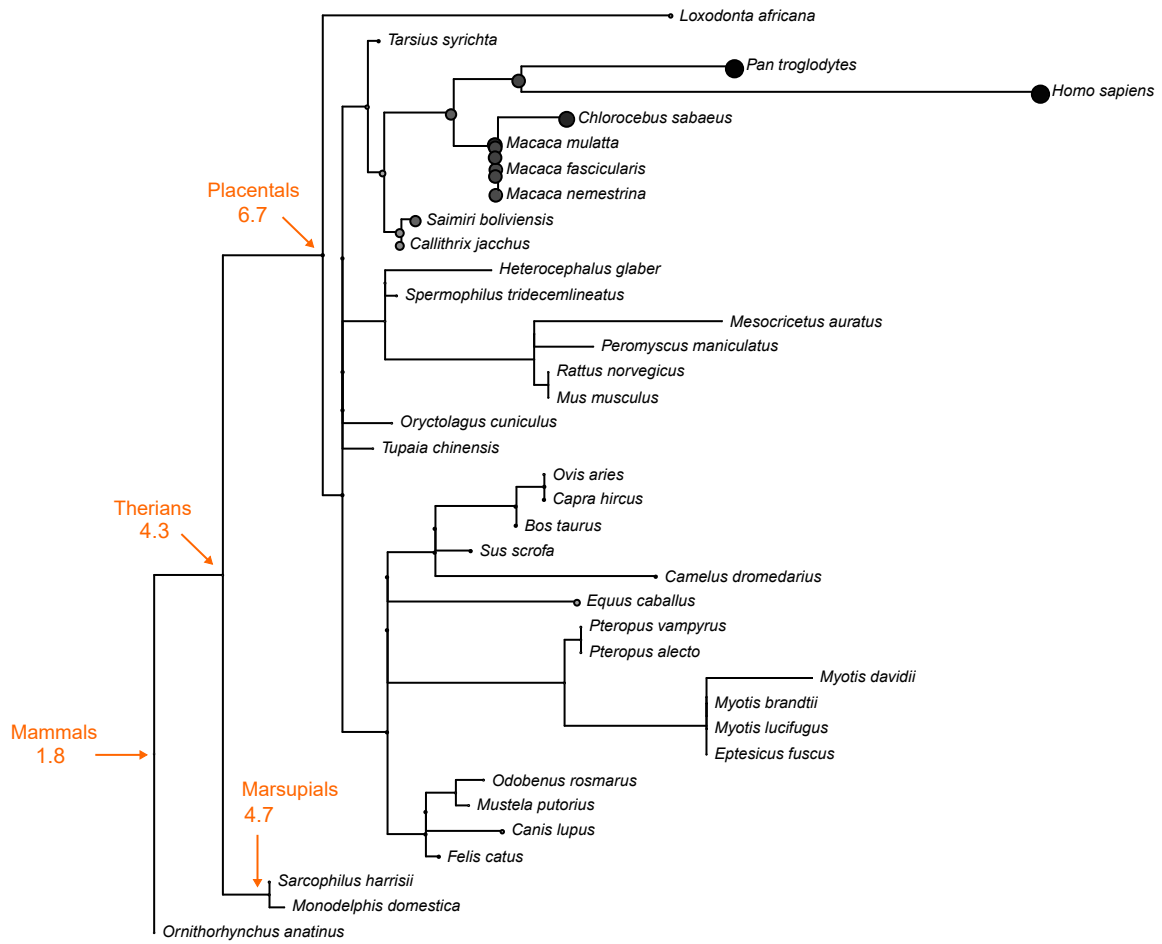




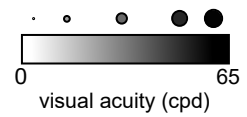
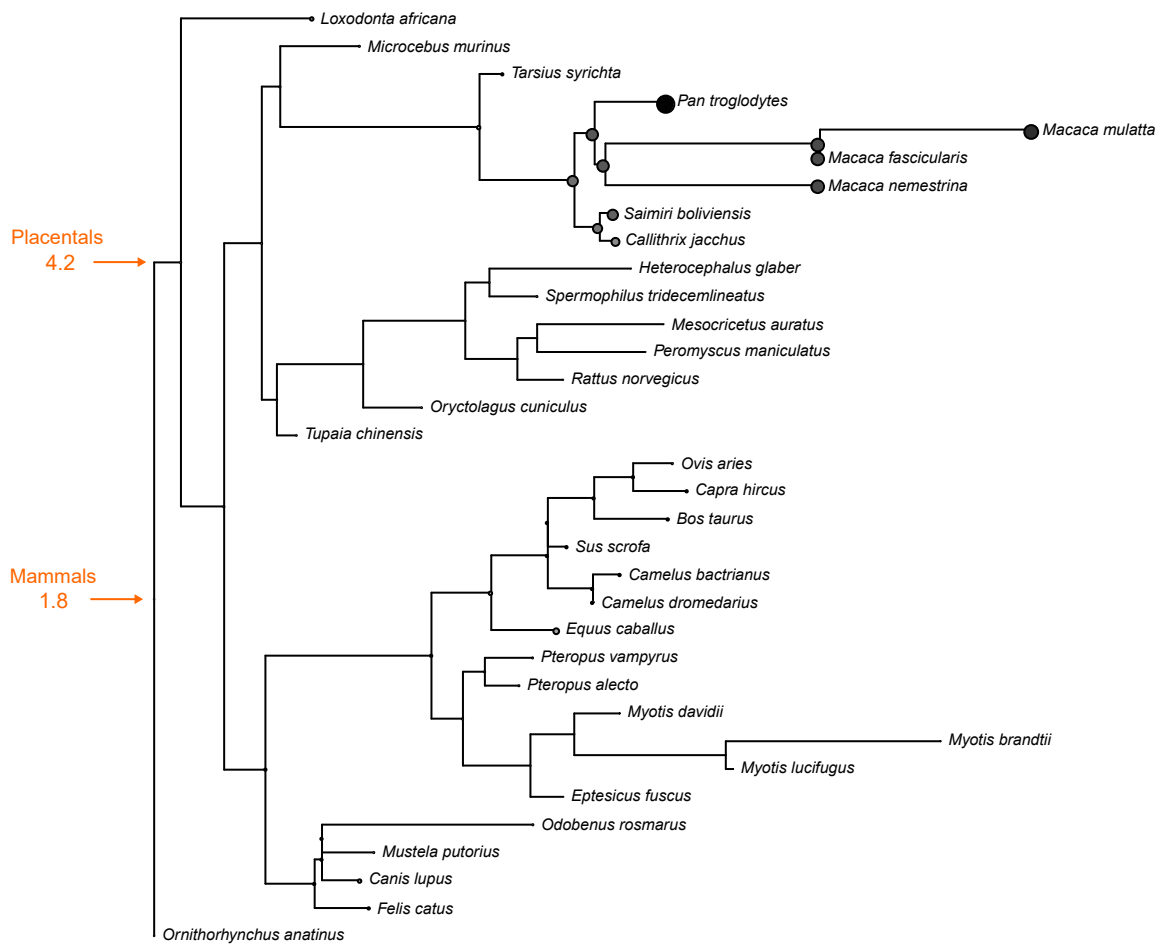
VISUAL ACUITY  
OPN3



VISUAL ACUITY  
OPN5

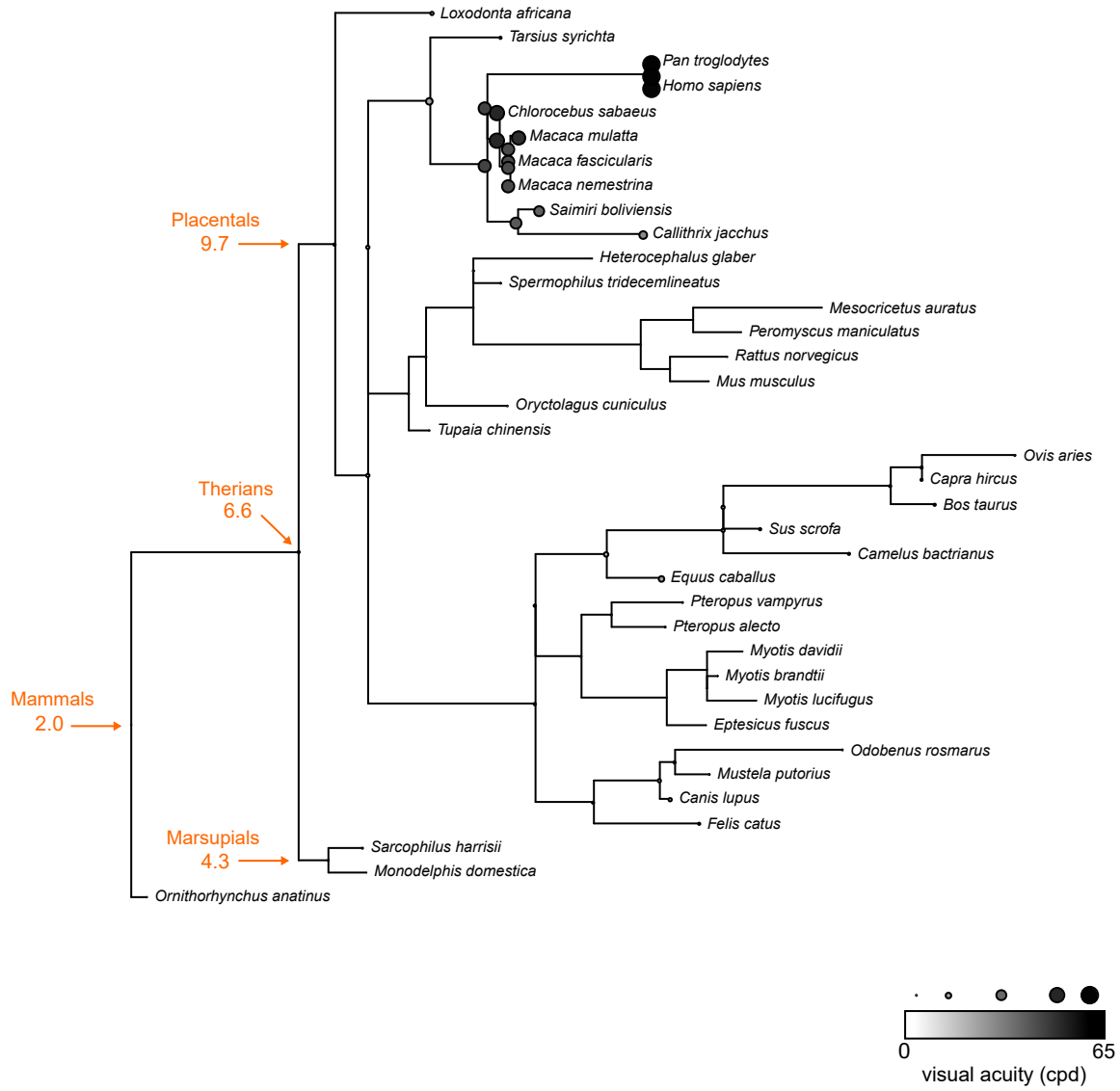


VISUAL ACUITY  
RGR

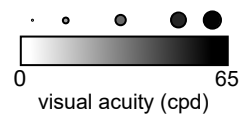
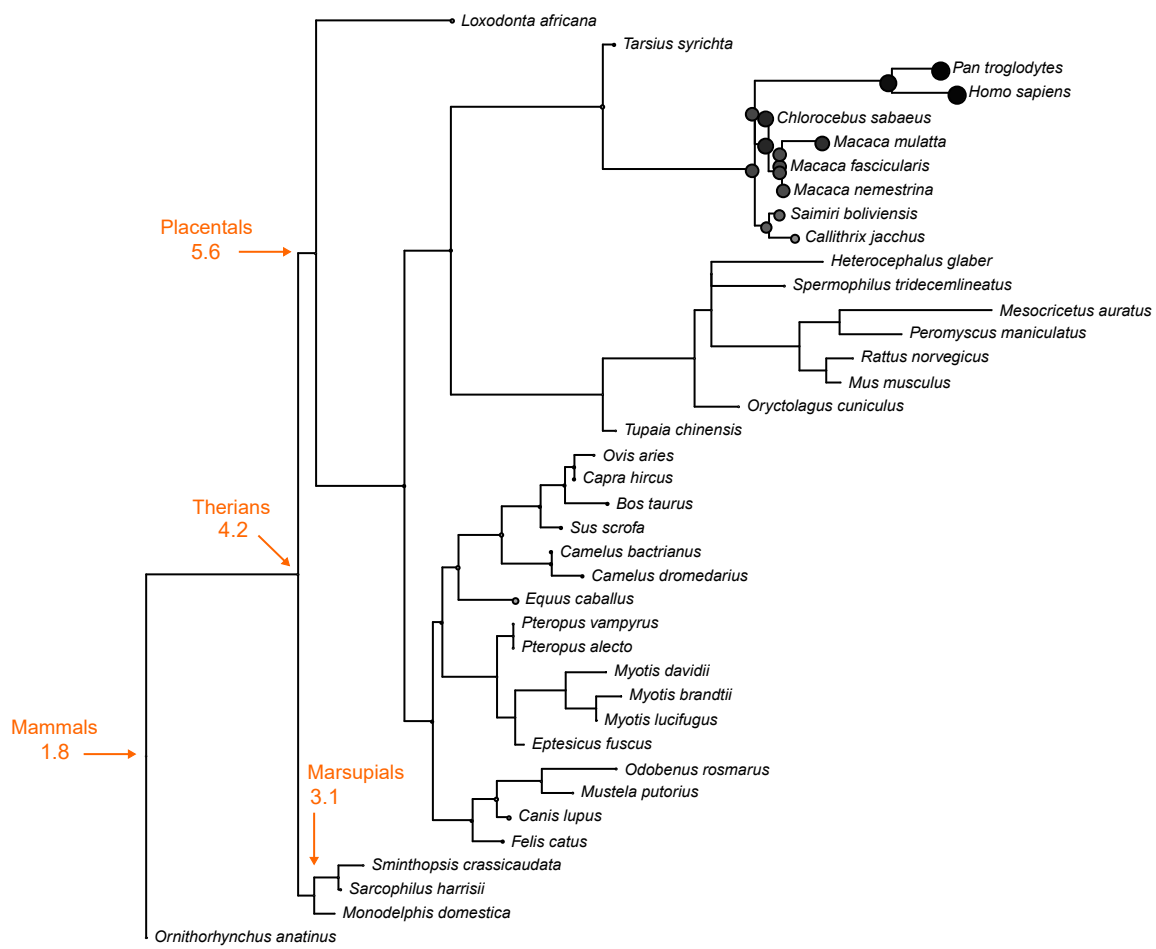




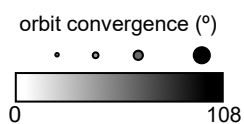
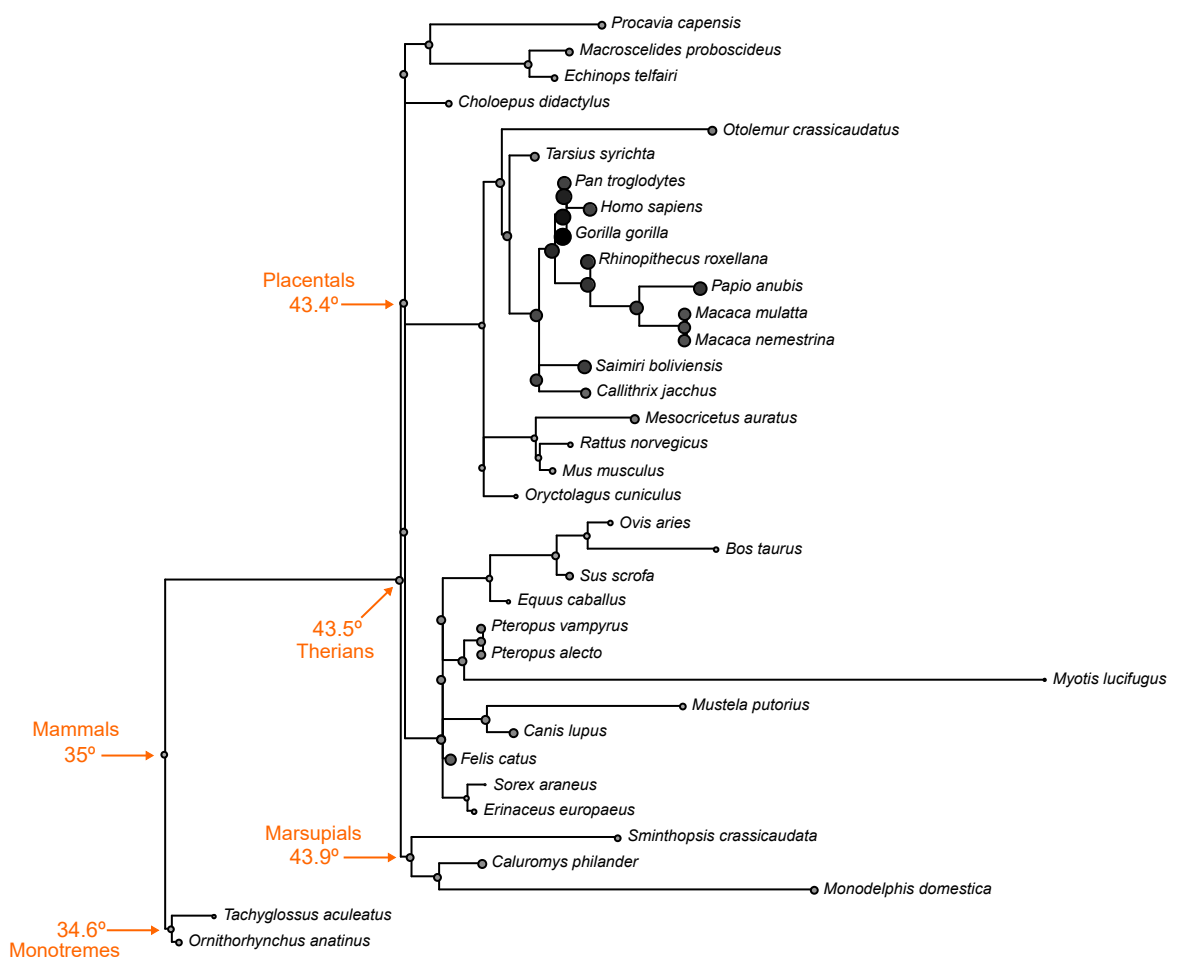
VISUAL ACUITY  
RRH



VISUAL ACUITY  
OPN4m

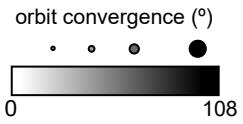
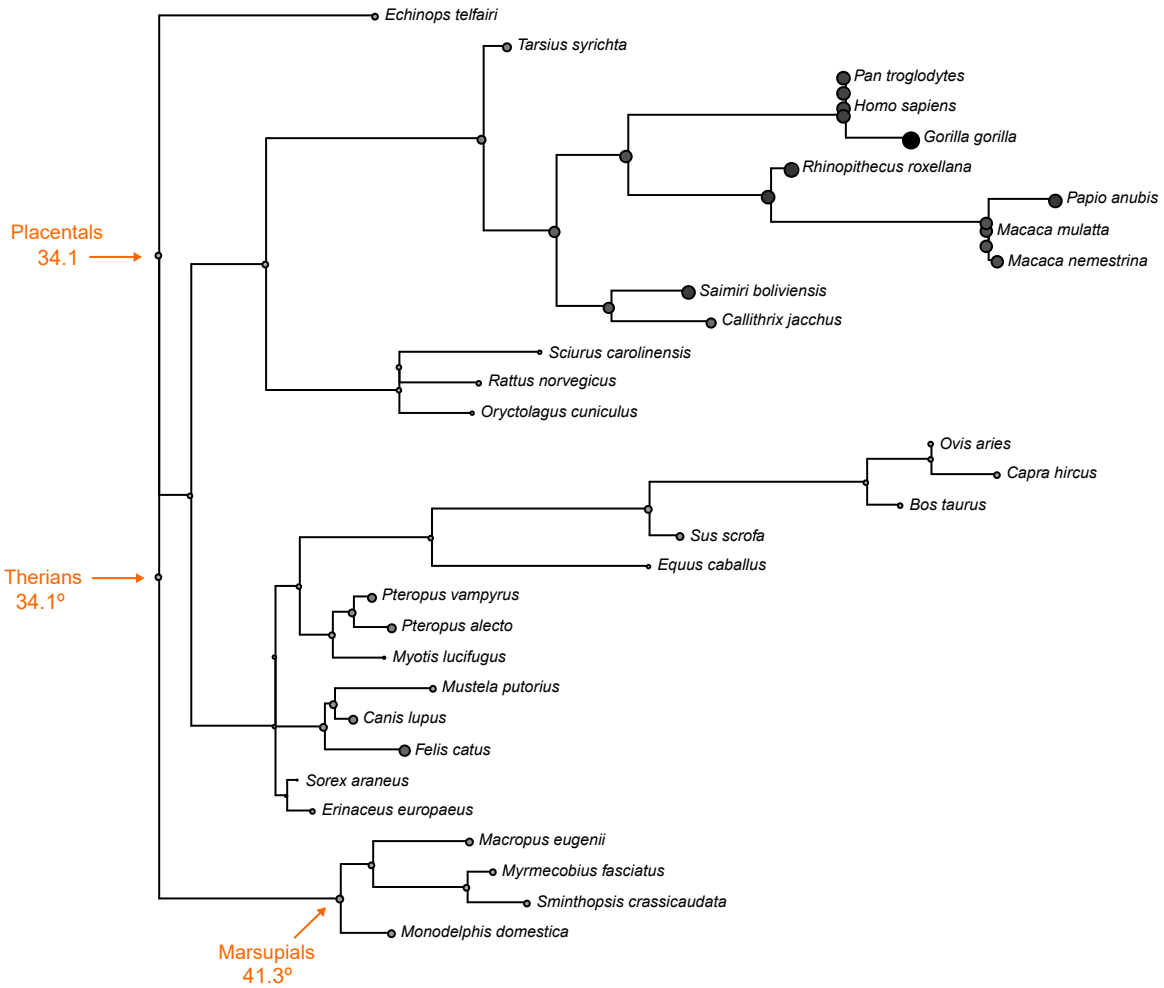


# ORBIT CONVERGENCE RH1



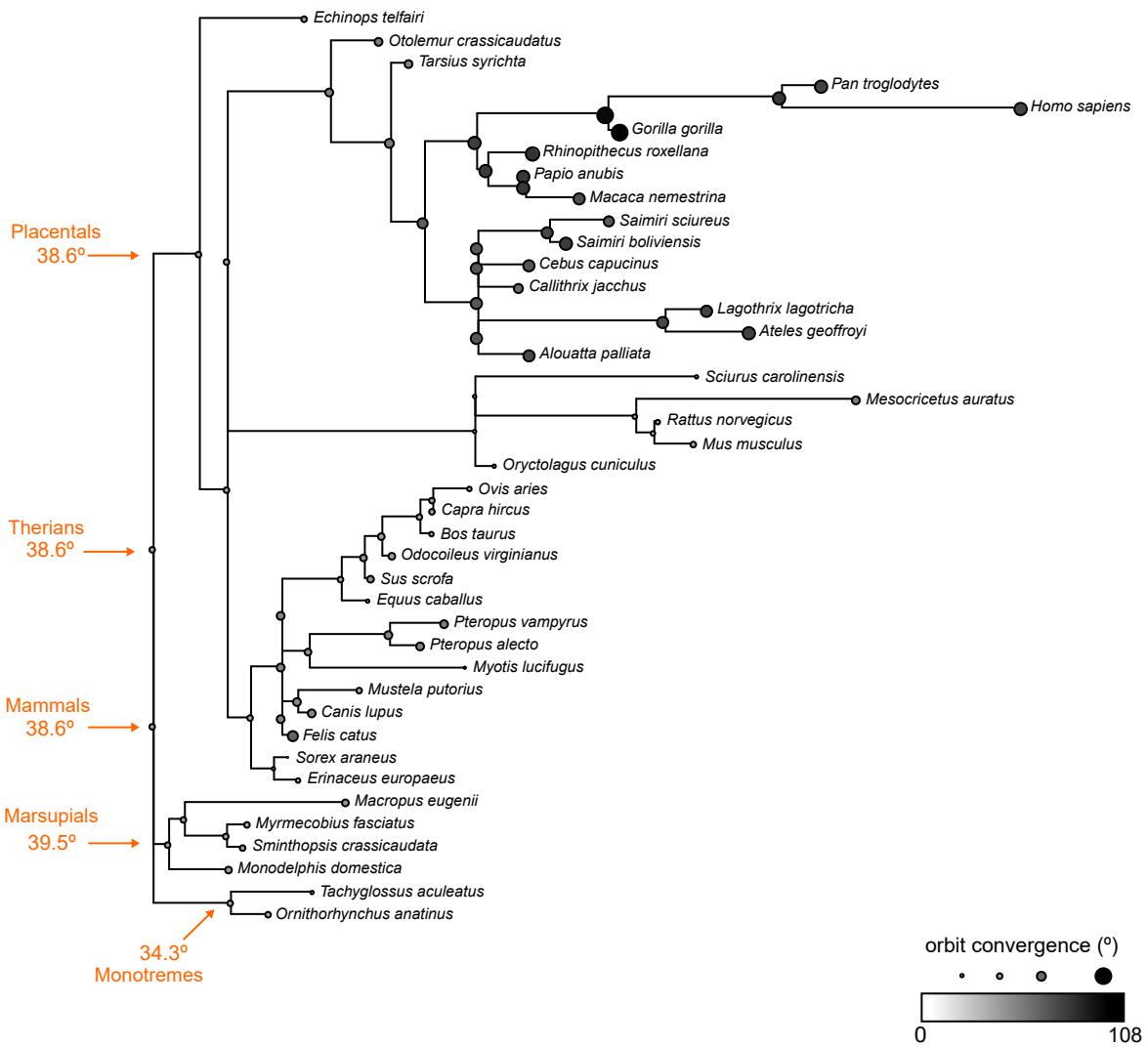
ORBIT CONVERGENCE

OPN1sw1

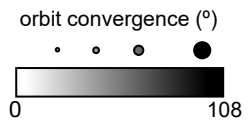
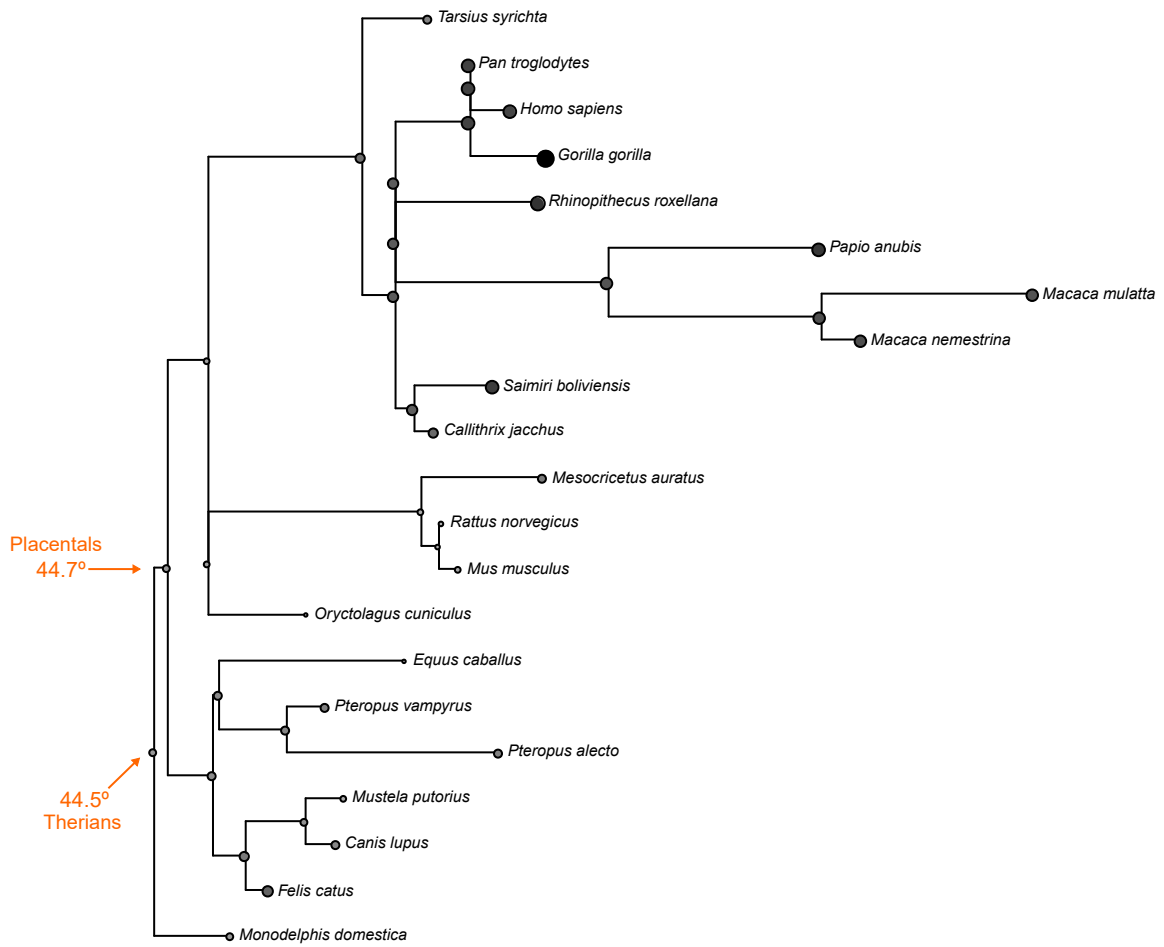


ORBIT CONVERGENCE

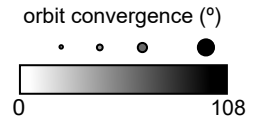
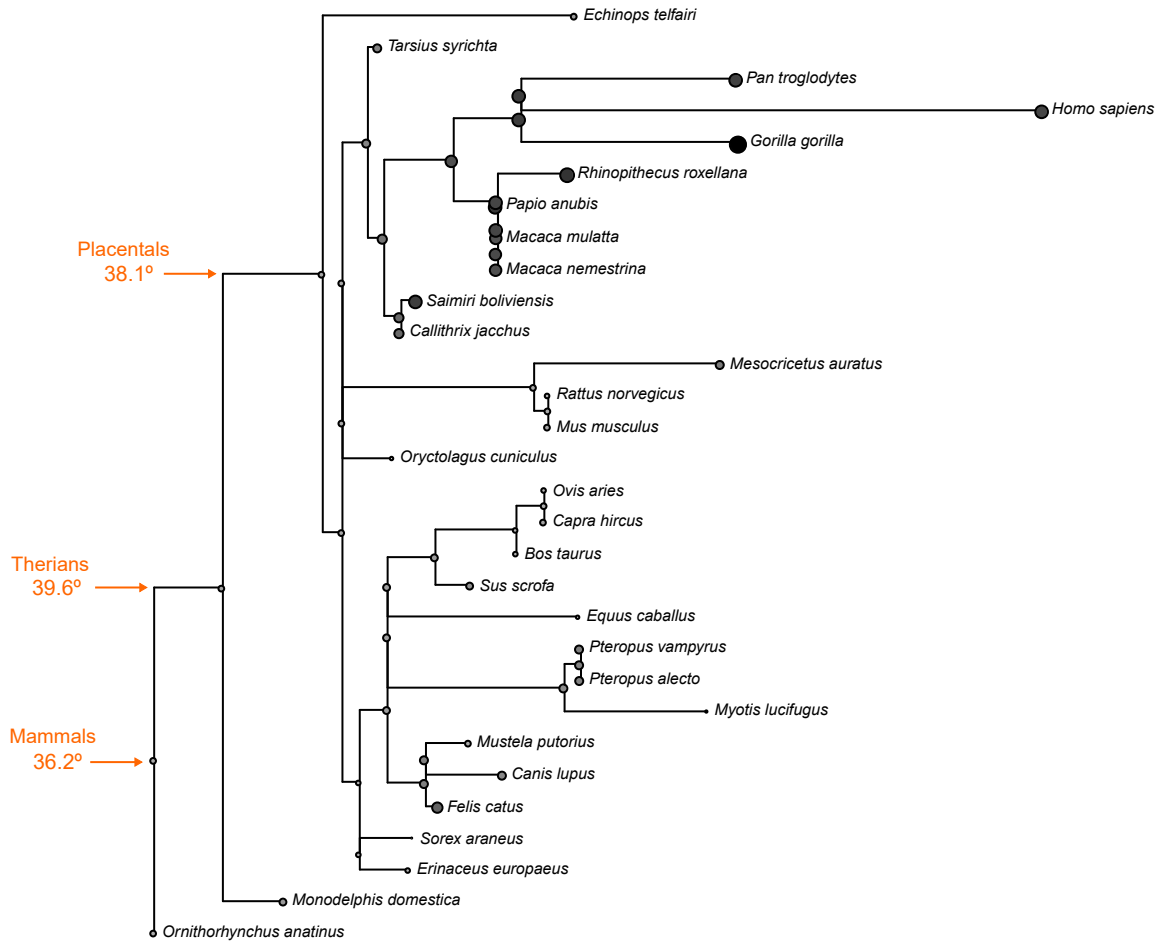
*OPN1lw*



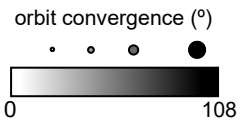
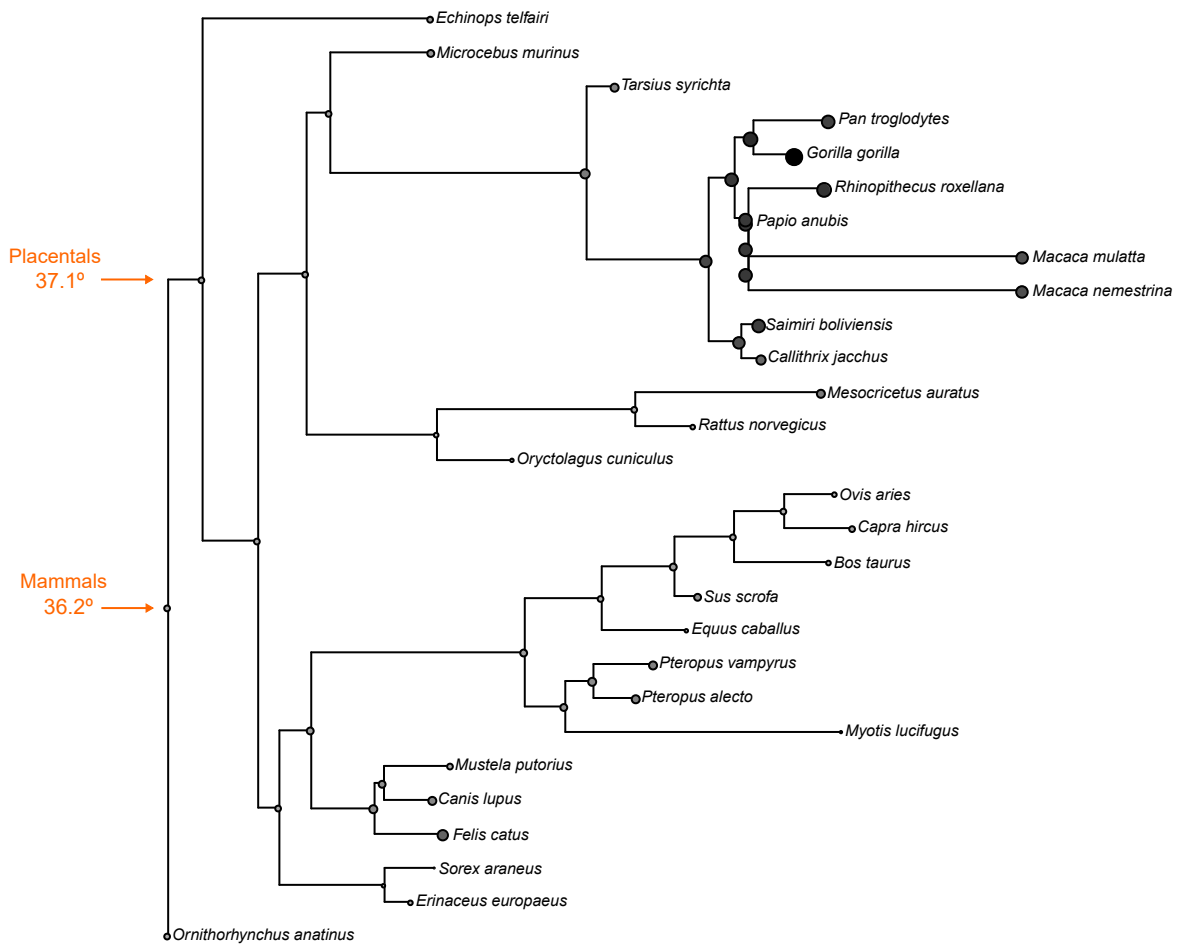
ORBIT CONVERGENCE  
*OPN3*



ORBIT CONVERGENCE  
OPN5

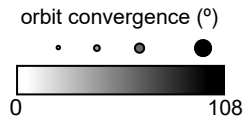
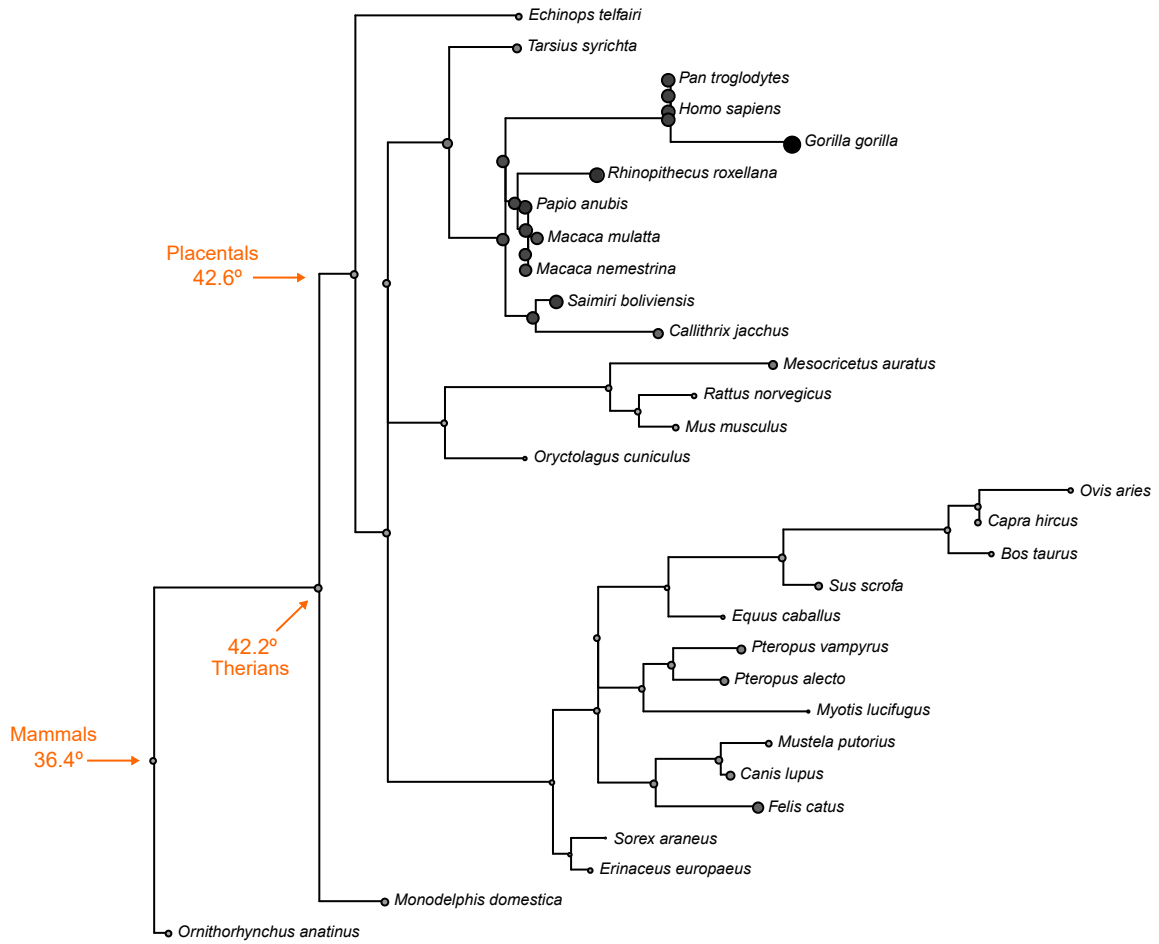


ORBIT CONVERGENCE  
RGR





ORBIT CONVERGENCE  
*RRH*



ORBIT CONVERGENCE  
*OPN4m*

