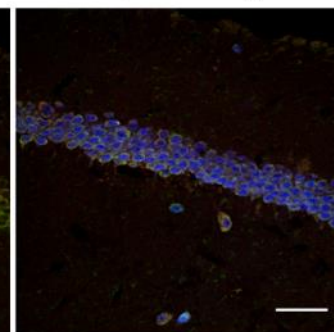
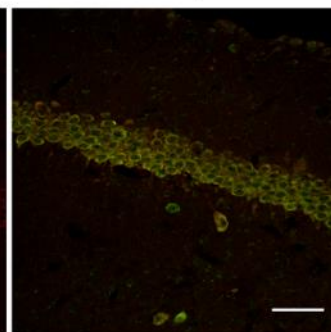
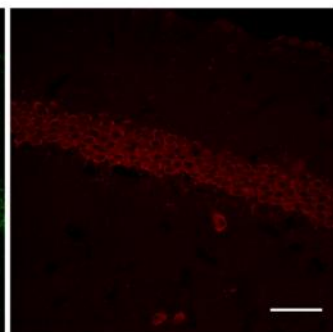
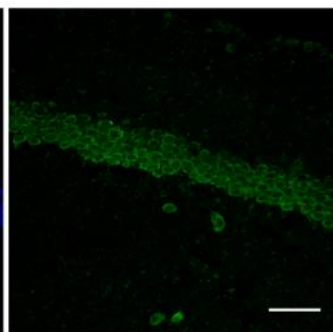
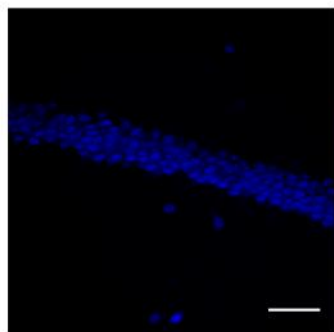
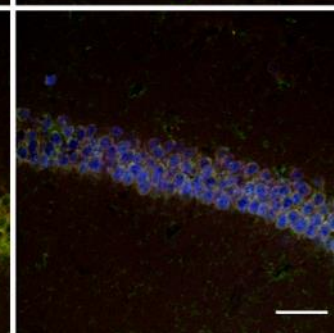
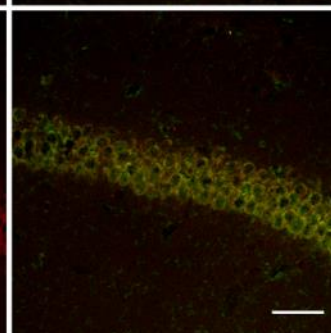
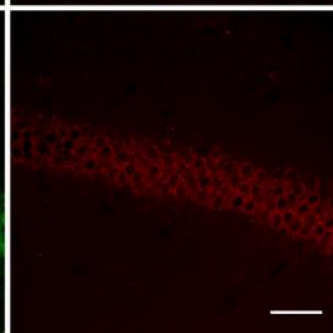
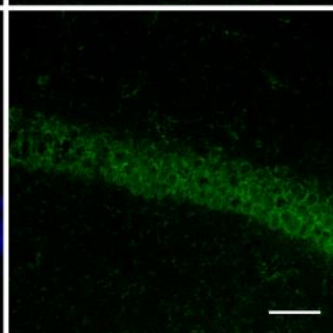
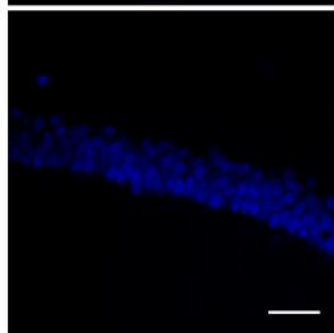
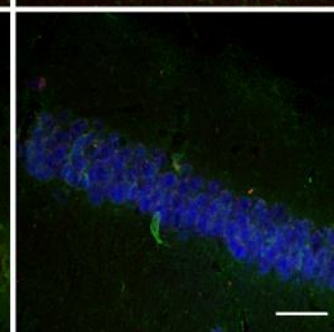
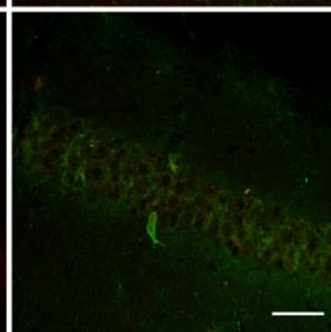
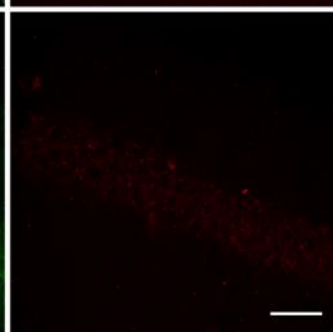
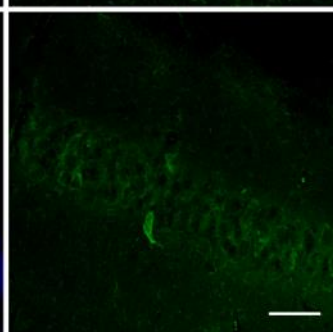
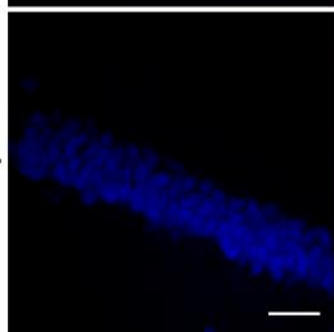
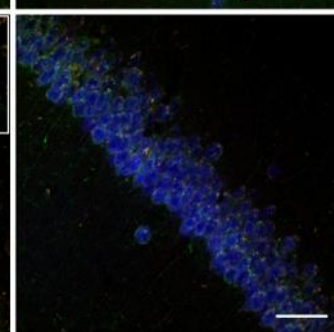
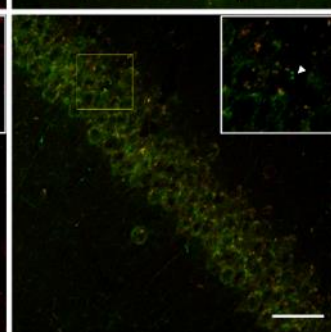
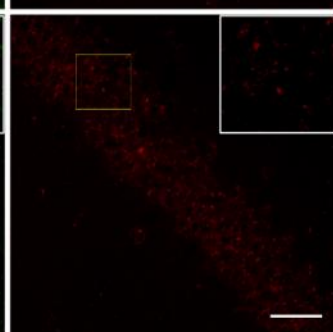
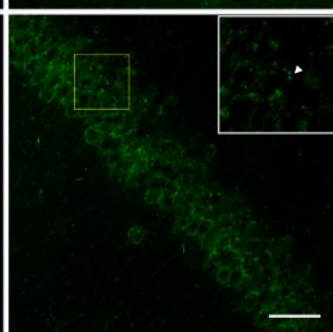
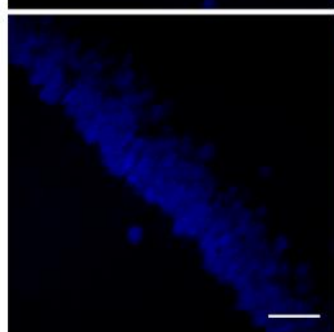
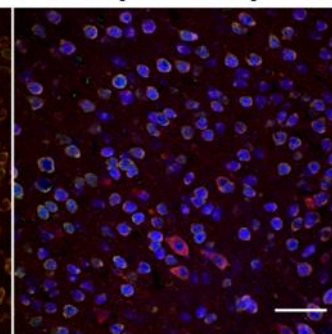
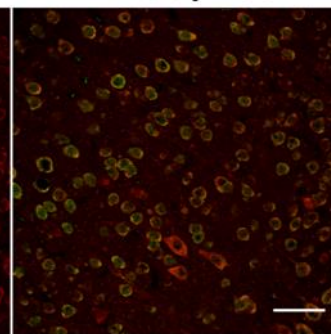
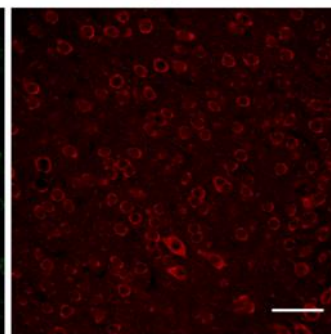
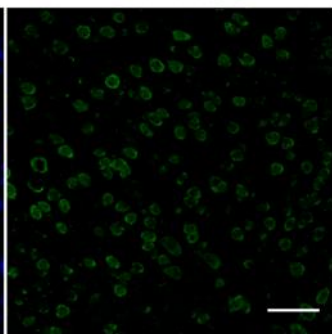
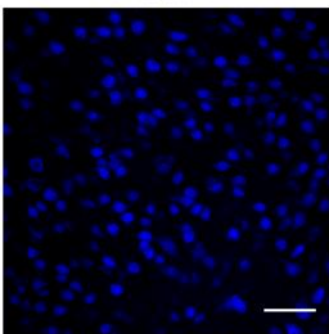
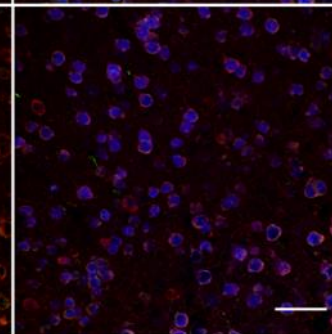
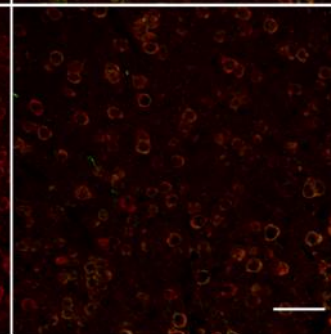
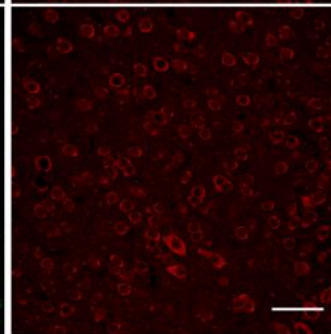
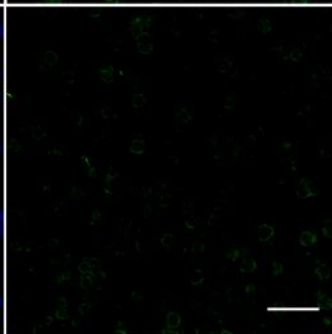
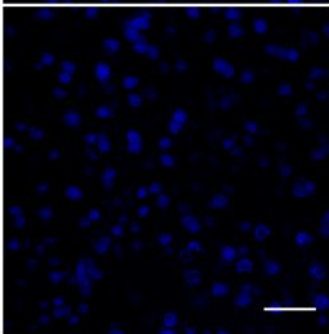
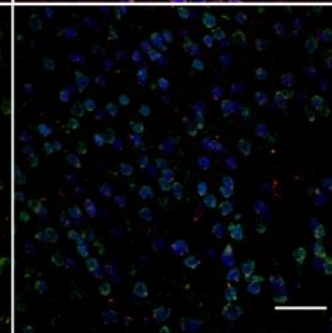
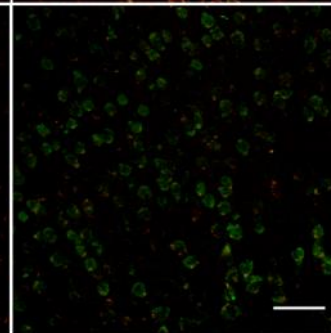
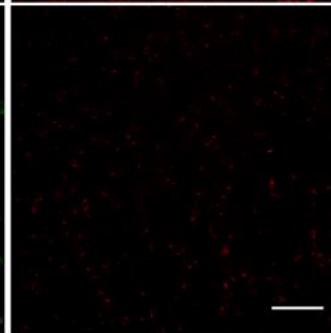
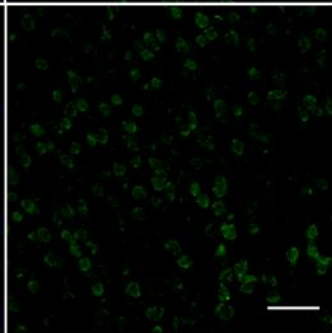
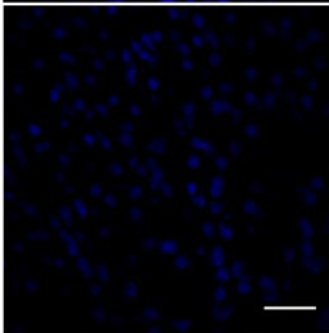
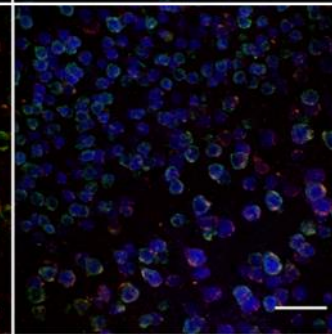
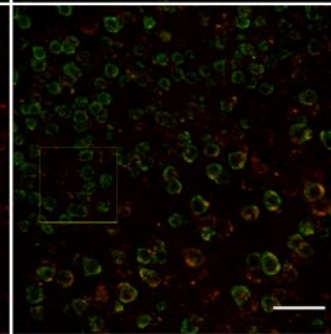
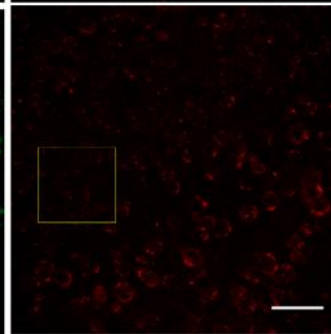
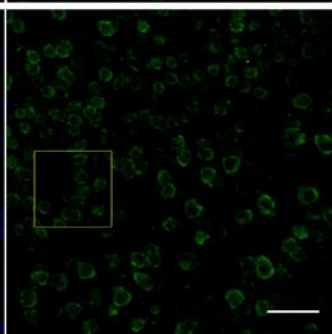
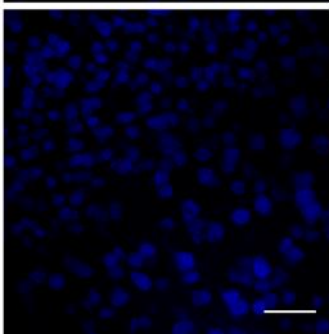


**NeuN****AT180****LC3****AT180 / LC3****NeuN / AT180 / LC3****4 MON WT****4 MON KO****12 MON WT****12 MON KO**

**NeuN****AT180****LC3****AT180 / LC3****NeuN / AT180 / LC3****4 MON WT****4 MON KO****12 MON WT****12 MON KO**

**Supplementary Figure:** LC3 and phospho-T231 tau (AT180) co-staining in brains of 4 and 12 month WT and Nrf2 (-/-) mice. **(A)** Representative co-localization staining for pT231 tau (AT180) (green), LC3 (red) and NeuN (blue) in the CA1 of the hippocampus. The white arrowheads indicated AT180 positive accumulations that did not show co-localization with LC3. **(B)** Representative co-localization staining for pT231 tau (AT180) (green), LC3 (red) and NeuN (blue) in the frontal cortex layer V. NeuN was used as a neuron marker. Scale bars: 50µm. Higher magnification images are shown in insets, scale bars: 25 µm.