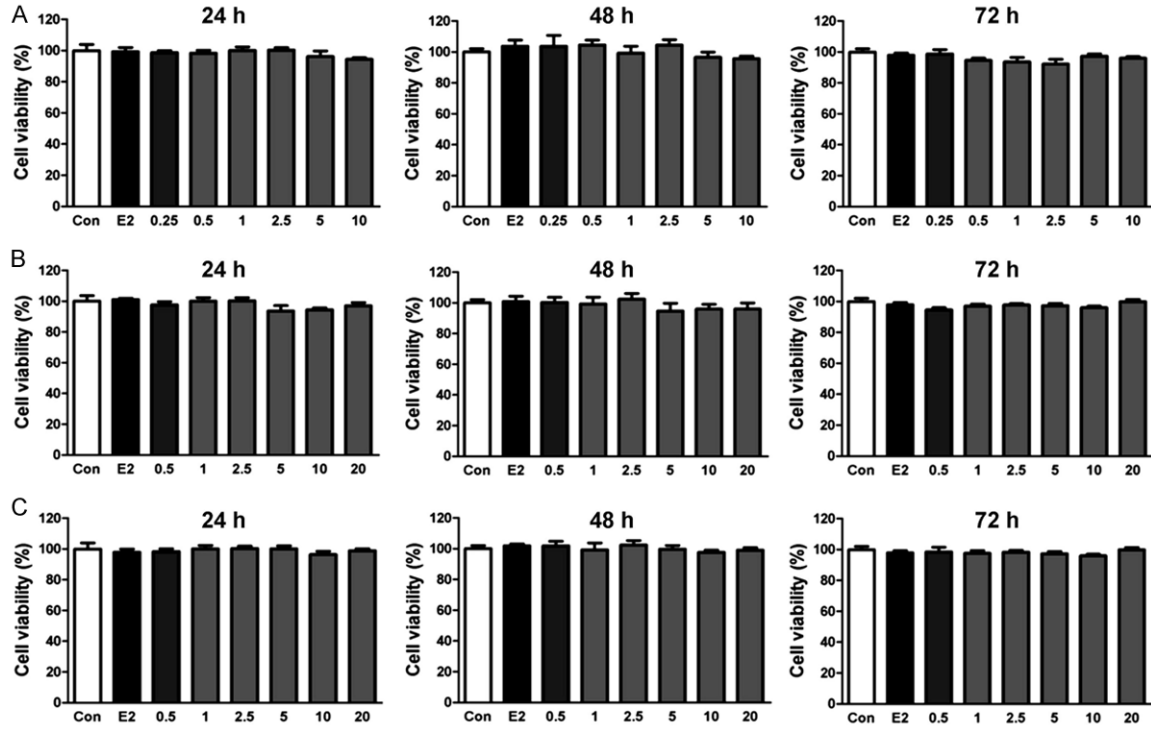
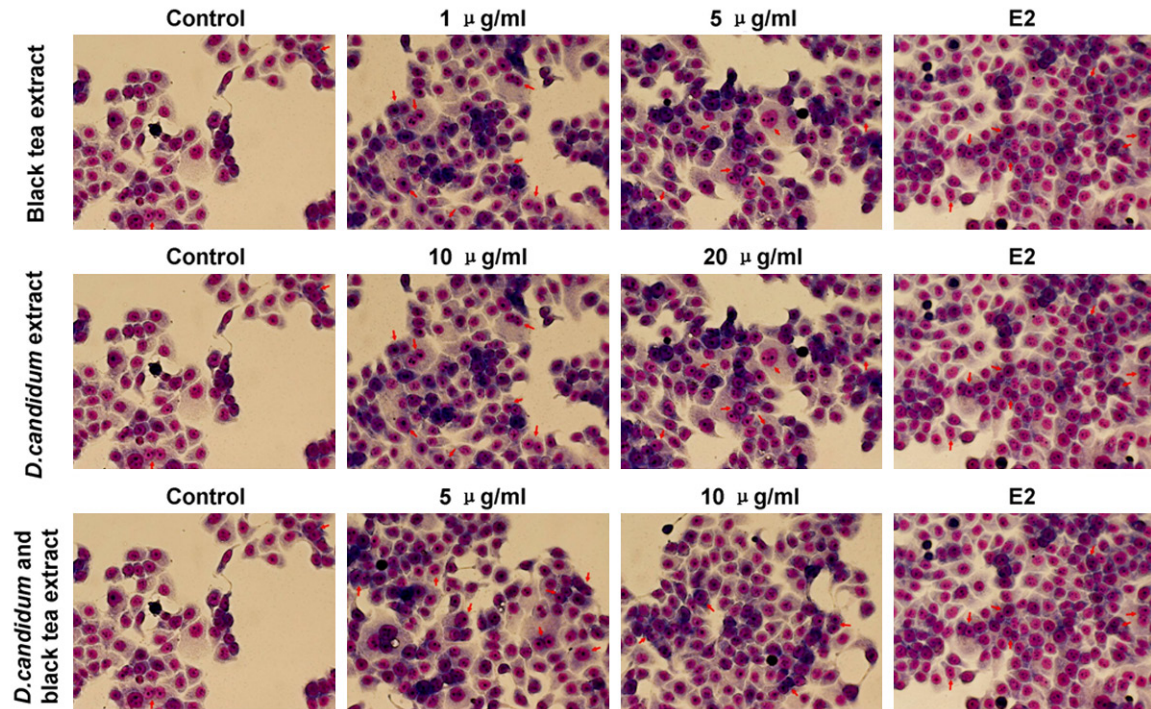


## Estrogenic activity of black tea and *D. candidum*



**Supplementary Figure 1.** The pro-proliferative effect of phytoestrogens disappeared in the ER negative cell line MDA-MB-231. A. Black tea extract, 24-72 h. B. *D. candidum* extract, 24-72 h. C. Black tea and *D. candidum* extract, 24-72 h.



**Supplementary Figure 2.** Giemsa stain showed an increase in cells in mitotic period after phytoestrogen treatment. Black tea, *D. candidum*, and Black tea and *D. candidum* extracts were used in different dosages, with E2 treatment as the positive control.