

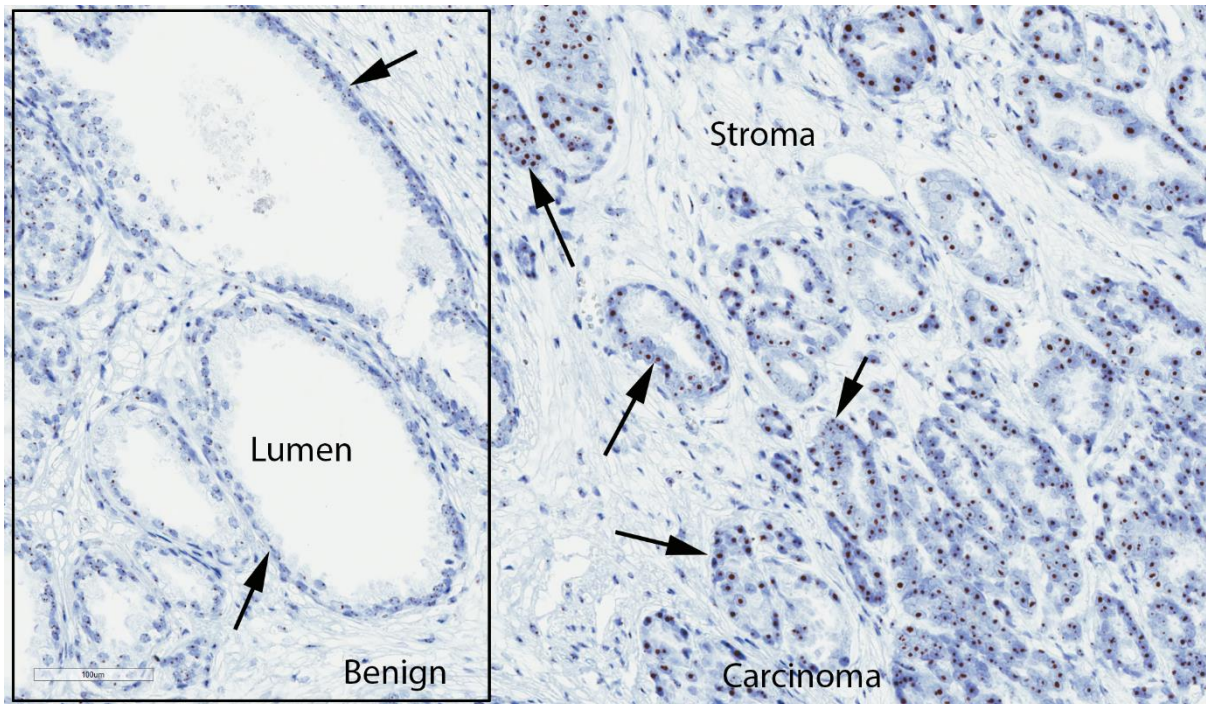
Supplemental Table 1

Supplemental Table 1. Clinicopathological features of cases on TMAs.

Gleason grade groups	Stage groups				Total
	pT2	pT3a	pT3b	Any N1	
I (3+3)	5	4	0	0	9
II (3+4)	7	13	0	0	20
III (4+3)	2	6	2	1	11
IV (4+4 / 3+5 / 5+3)	2	4	0	0	6
V (4+5 / 5+4 / 5+5)	4	5	8	3	20
Total	20	32	8	3	66

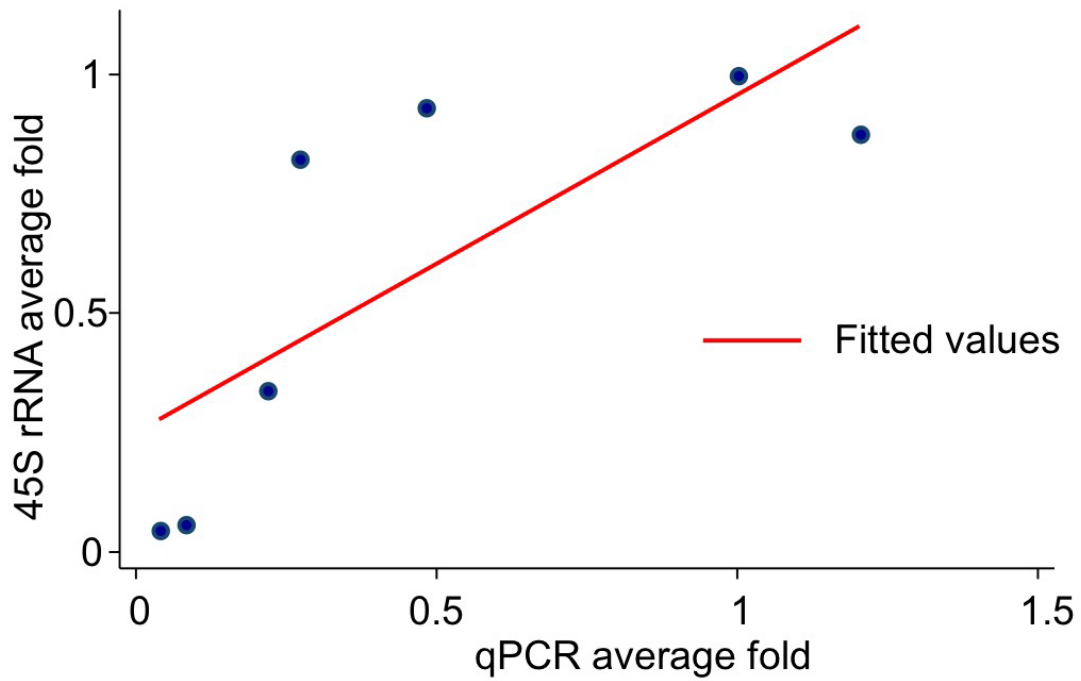
p=0.012 (Pearson Chi-square)

Supplementary Figures.



Supplementary Figure 1. Increased 5'ETS/45S CISH signals in cancer glands.

Low/Medium power image of standard section of prostatectomy showing benign/normal appearing glands on the left (boxed area) and carcinoma glands on the right with increased nuclear signals in carcinoma glands. Arrows indicate glands/acini. Stroma is indicated. Scale bar 100 μm .



Supplementary Figure S2. Scatterplot showing correlation between 5'ETS/45S CISH levels by quantitative image analysis and quantitative real time PCR levels from the experiments shown in Figure 2E.