

SUPPLEMENTARY DATA

Anti-adipogenic effects of KD025 (SLx-2119), a ROCK2-specific inhibitor, in 3T3-L1 cells.

Duy Trong Vien Diep^{1*}, Kyungki Hong^{1*}, Triyeng Khun^{1*}, Mei Zheng¹, Asad ul-Haq¹, Hee-Sook Jun^{1,3,4}, Young-Bum Kim^{2,3†}, and Kwang-Hoon Chun^{1†}

¹Gachon Institute of Pharmaceutical Sciences, College of Pharmacy, Gachon University, Incheon 21936, Republic of Korea

²Division of Endocrinology, Diabetes and Metabolism, Beth Israel Deaconess Medical Center and Harvard Medical School, Boston, Massachusetts, United States

³Lee Gil Ya Cancer and Diabetes Institute, Gachon University, Incheon 21999, Republic of Korea

⁴Gachon Medical Research Institute, Gil Hospital, Incheon 21565, Republic of Korea

†Correspondence to:

Kwang-Hoon Chun, College of Pharmacy, Gachon University, Incheon 21936, Republic of Korea

Tel.: +82-32-820-4951

E-mail: khchun@gachon.ac.kr

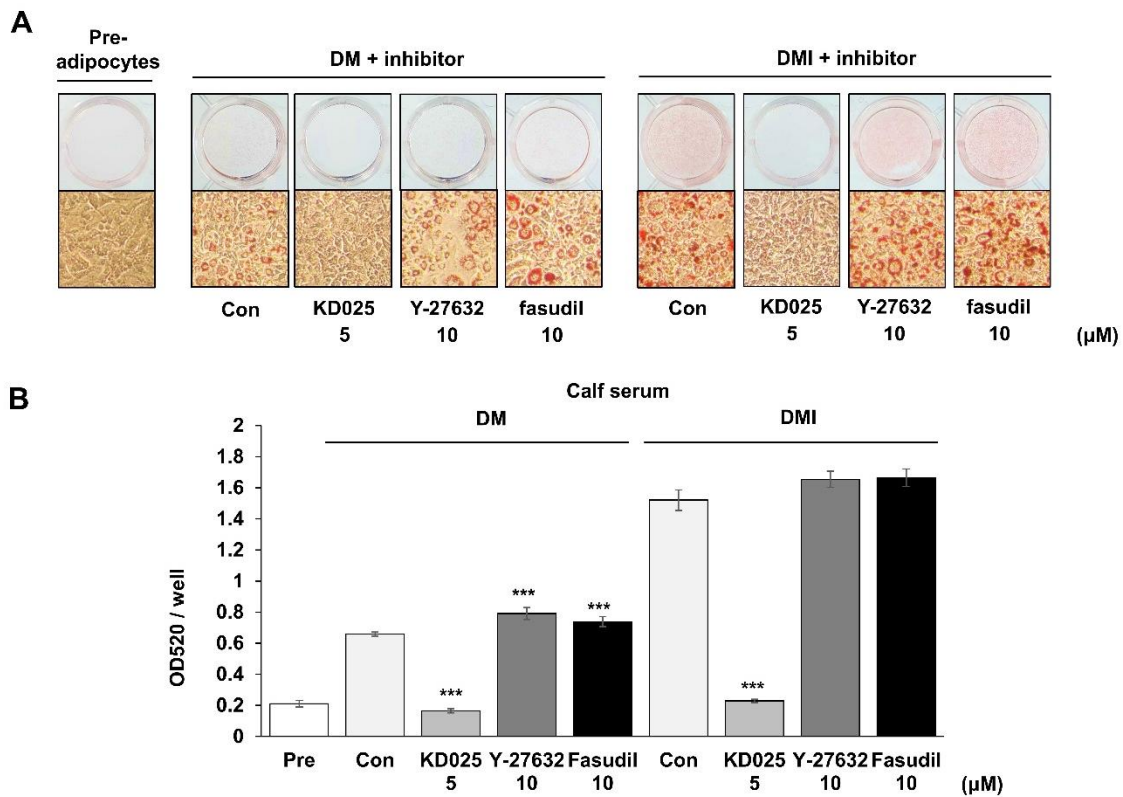
Young-Bum Kim, 330 Brookline Ave, CLS-745, Boston, MA 02215, USA

Tel.: +1-617-735-3216, Fax: +1-617-735-3323

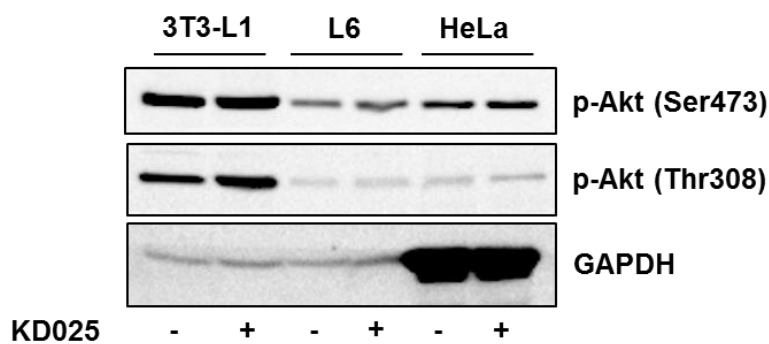
E-mail: ykim2@bidmc.harvard.edu

***The authors contributed equally**

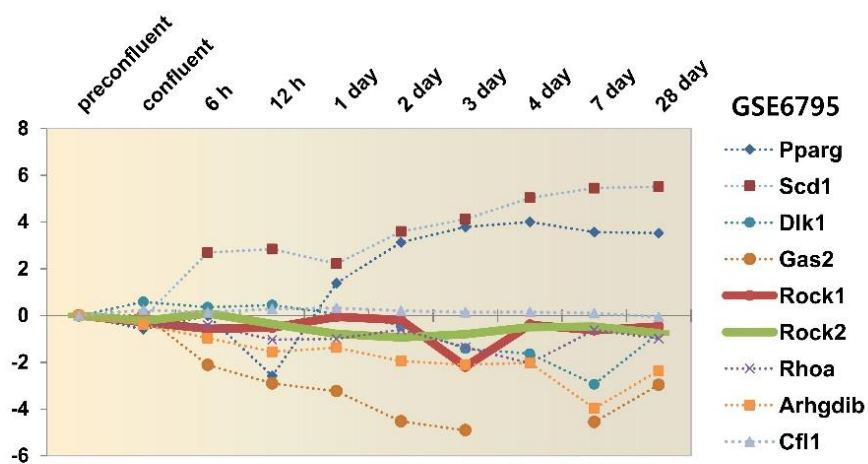
Supplemental Figures



Supplementary Figure S1. Comparison of the effects of ROCK inhibitors during 3T3-L1 adipogenesis. (A) 3T3-L1 pre-adipocytes were cultured in 10% calf serum containing culture media. After 2 days incubation post-confluence, they were differentiated by incubation in DMI with KD025, Y-27632, or fasudil, as indicated, and stained with Oil Red O on day 8. (B) Lipid accumulation was assessed by measuring absorbance at 520 nm of Oil Red O. Data is expressed as means \pm S.E. based on triplicate experiments. *, $p < 0.05$; **, $p < 0.01$; ***, $p < 0.001$ vs. DM control.



Supplementary Figure S2. Comparison of the effects of ROCK inhibitors in normal growth condition. Sub-confluent 3T3-L1, L6, or HeLa cells were treated with 5 μ M of KD025 (in 10% NBCS or FBS/DMEM) for 1 day. Cell lysates were obtained and subjected to SDS-PAGE for immunoblot analysis using anti-phospho-IRS-1 (Tyr608) and anti-phospho-Akt (Ser473 and Thr308) antibodies. GAPDH was used as a loading control.



Supplementary Figure S3. ROCK mRNA level during adipogenesis. Gene expression level was analyzed during adipogenesis of 3T3-L1 using data (ID : GSE6795) from Gene Expression Omnibus database (<https://www.ncbi.nlm.nih.gov/geo/>). Up- or down-regulated genes are displayed for comparison. *Cfl1*, cofilin gene, was consistent in the mRNA level through the differentiation.

Raw Images used in article

Figure 5

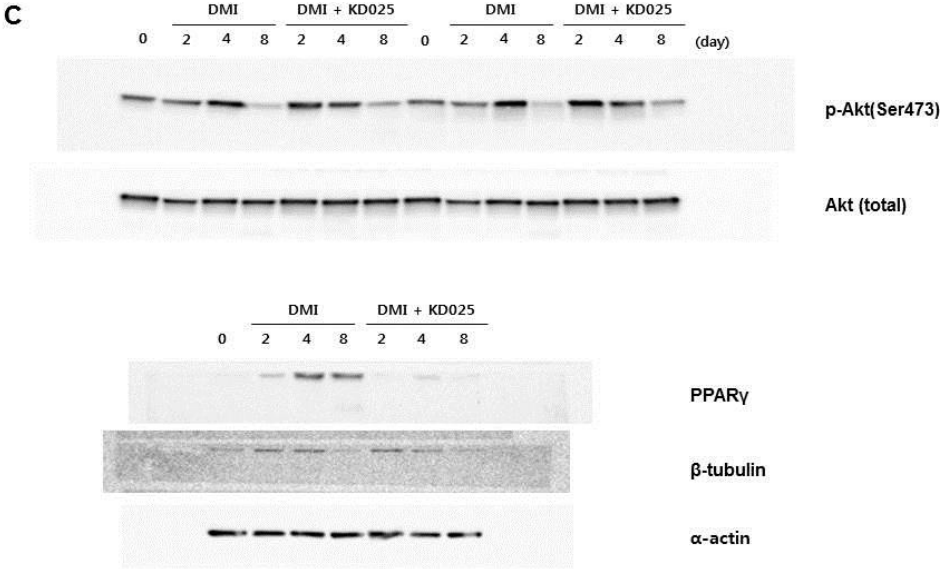
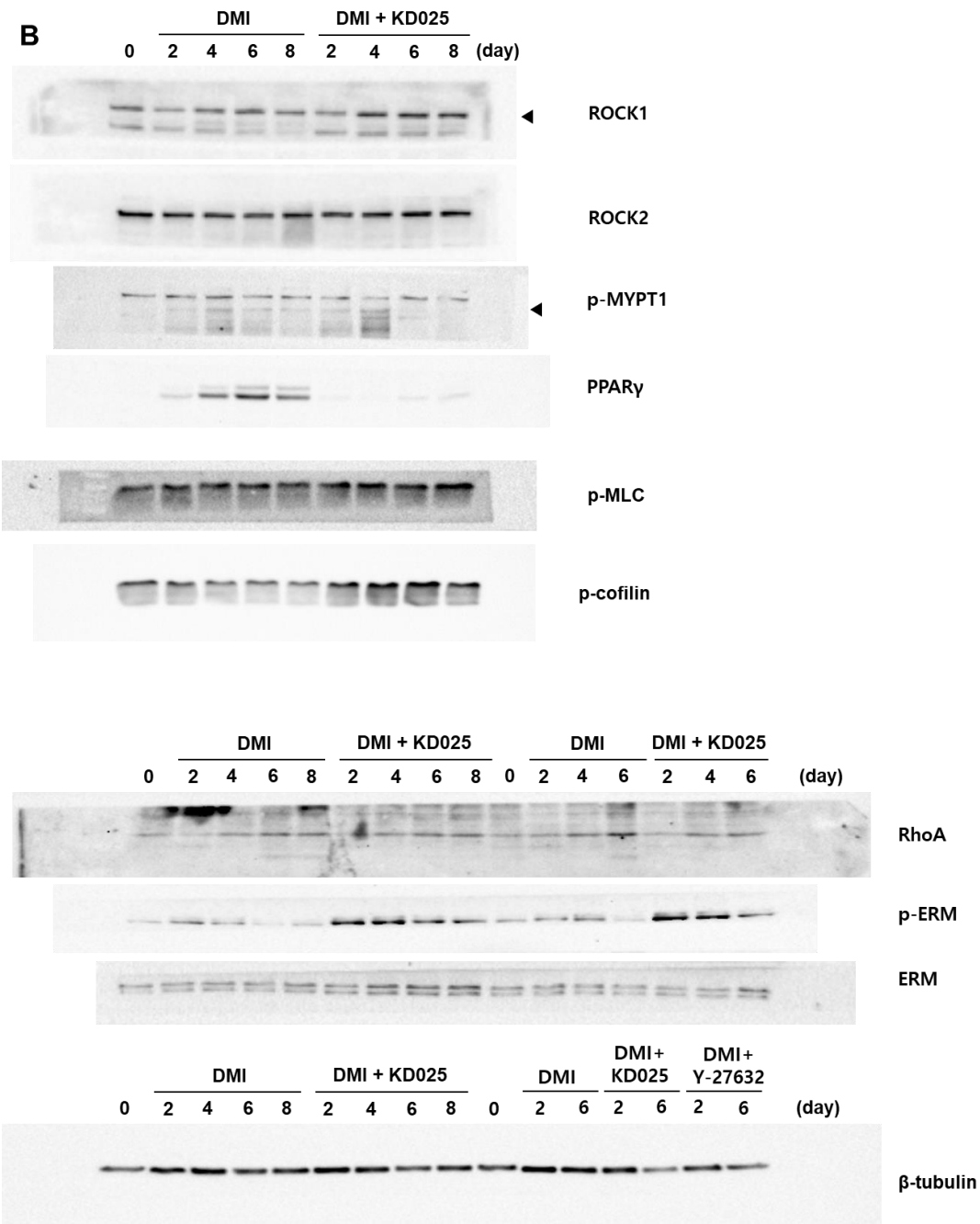


Figure 6



D

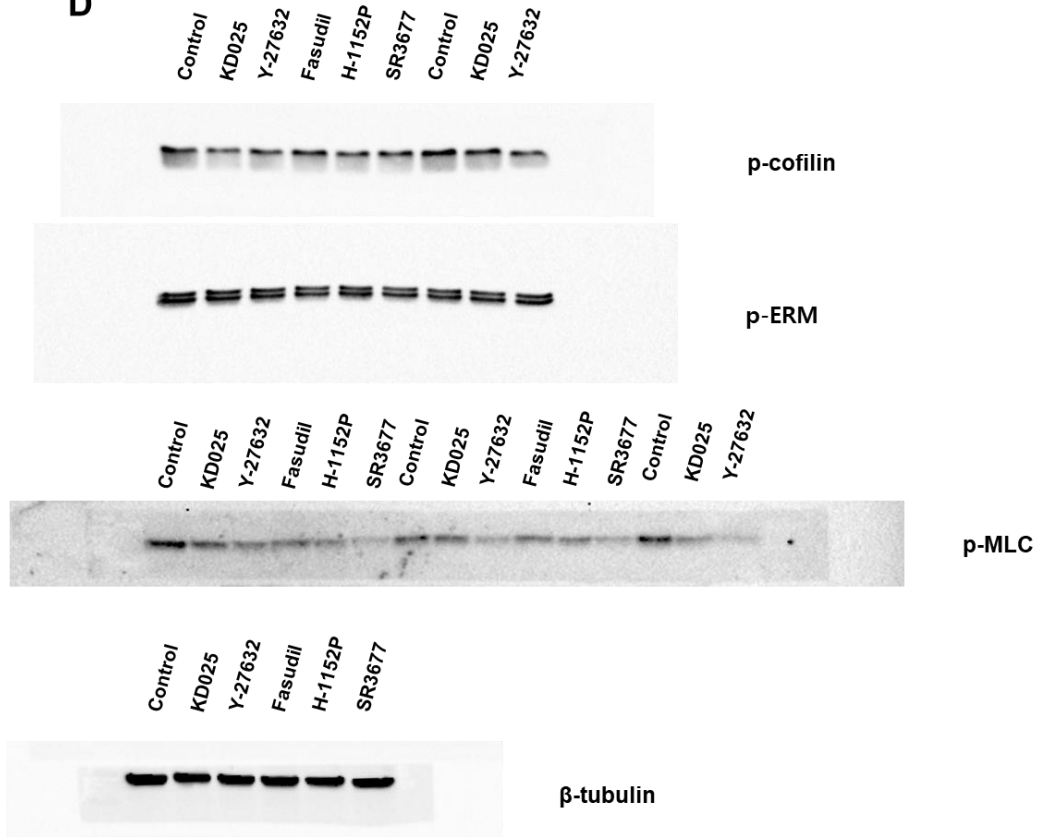


Figure 7

