

Supplementary Information

Akt regulates neurite growth by phosphorylation-dependent inhibition of radixin proteasomal degradation

Eun-Ju Jin^{1,2#}, Hyo Rim Ko^{1,2#}, Inwoo Hwang^{1,2}, Byeong-Seong Kim¹, Jeong-Yun Choi¹, Kye Won Park³, Sung-Woo Cho⁴, and Jee-Yin Ahn^{1,2,5*}

¹Department of Molecular Cell Biology, Sungkyunkwan University School of Medicine, Suwon 16419, Korea

²Single Cell Network Research Center, Sungkyunkwan University School of Medicine, Suwon 16419, Korea

³Department of Food Science and Biotechnology, College of Biotechnology and Bioengineering, Sungkyunkwan University, Suwon 16419, Korea

⁴Department of Biochemistry and Molecular Biology, University of Ulsan, College of Medicine, Seoul 05505, Korea

⁵Samsung Medical Center, Seoul 06351, Korea

These authors are equally contributed.

***Correspondence should be addressed to** Jee-Yin Ahn, Department of Molecular Cell Biology, Sungkyunkwan University School of Medicine, 2066, Seobu-ro, Jangan-gu, Suwon 16419, Korea
Phone: 82-31-299-6134; Fax: 82-31-299-6139; E-mail: jeeahn@skku.edu

Supplementary Figure legends

Figure S1.

HEK293T cells were co-transfected with Flag–Akt and GFP–radixin–WT, GFP–radixin–T573A, GFP–radixin–T564A, or GFP (mock), and the cell lysates were subjected to immunoprecipitation with anti-Flag antibody. Protein expression levels were determined by IB using the indicated antibodies. The uncropped blot images are shown in supplementary figure 8.

Figure S2.

PC12 cells were co-transfected with HA-Ub and GST-radixin-WT, GST-radixin-T573A, or GST-radixin-T564A and the cell lysates were subjected to GST pull down. Ubiquitination was analyzed with anti-HA antibody. The uncropped blot images are shown in supplementary figure 9.

Figure S3.

(A) HEK293T cells were co-transfected with GST-Akt and GFP–USP14, or GFP (mock). The cell lysates were subjected to GST pulldown assay. (B) HEK293T cells were co-transfected with GST–radixin and GFP-USP14. At 24 h after transfection, cell lysates were subjected to GST pulldown assay and IB with the indicated antibodies. The uncropped blot images are shown in supplementary figure 10.

Figure S4.

These are uncropped blot images corresponding to data show in Figure 1.

Figure S5.

These are uncropped blot images corresponding to data show in Figure 2.

Figure S6.

These are uncropped blot images corresponding to data show in Figure 3.

Figure S7.

These are uncropped blot images corresponding to data show in Figure 4.

Figure S8.

These are uncropped blot images corresponding to data show in Figure S1.

Figure S9.

These are uncropped blot images corresponding to data show in Figure S2.

Figure S10.

These are uncropped blot images corresponding to data show in Figure S3.

Figure S1

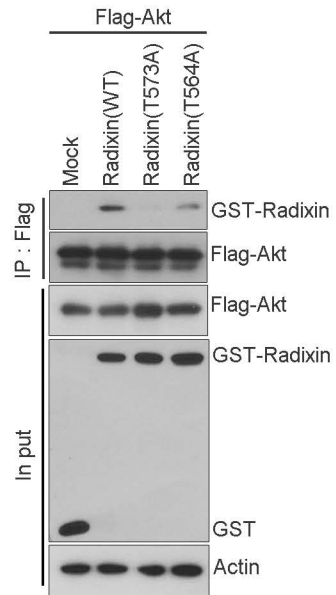


Figure S2

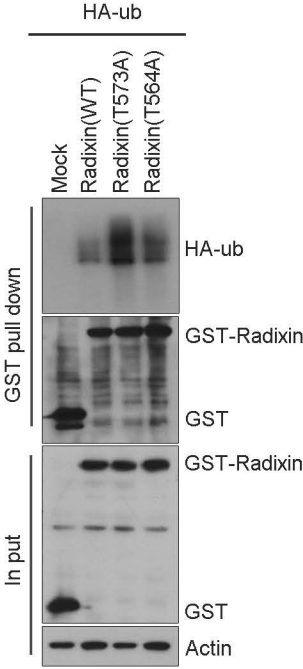


Figure S3

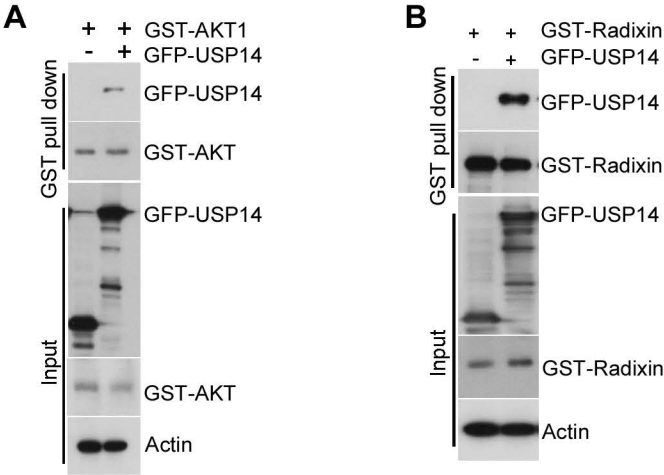
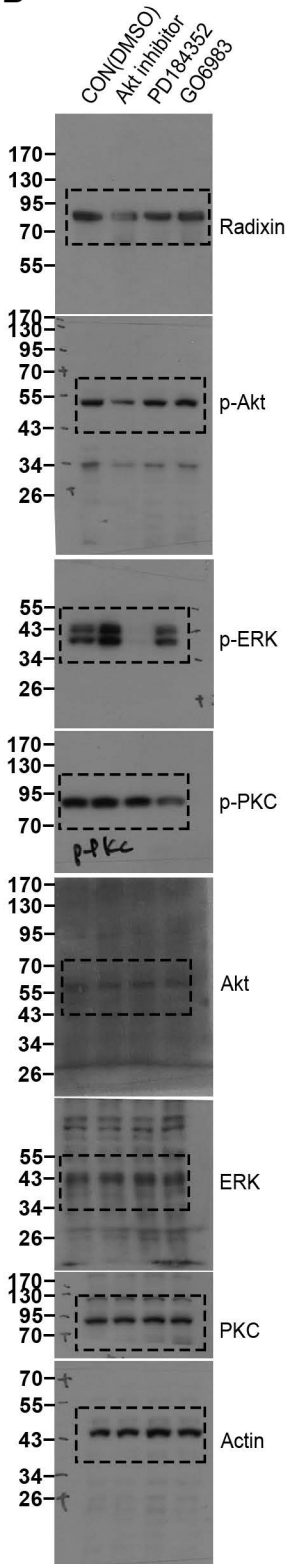
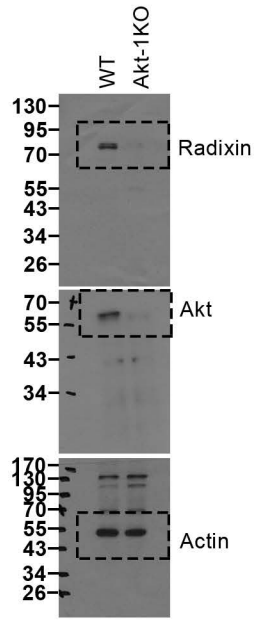


Figure S4

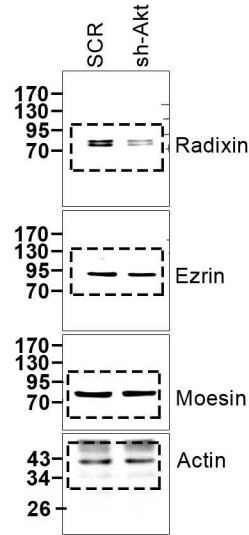
1B



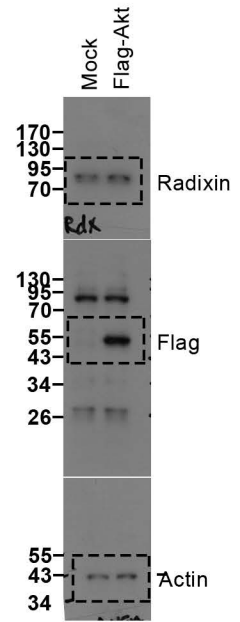
1C



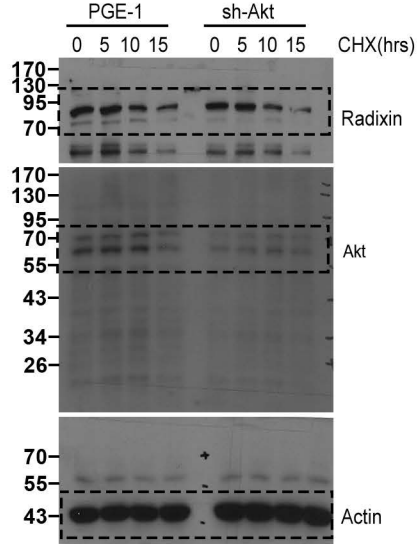
1D



1E



1F



1G

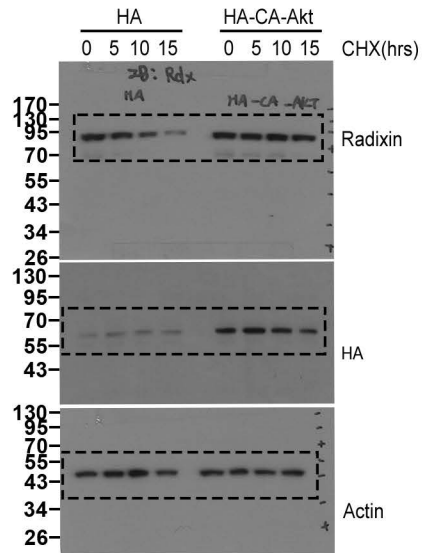
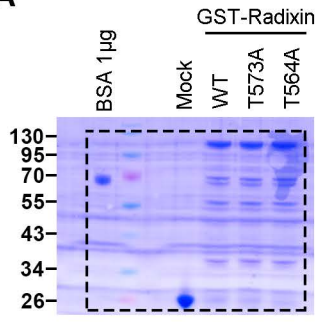


Figure S5

2A



2B

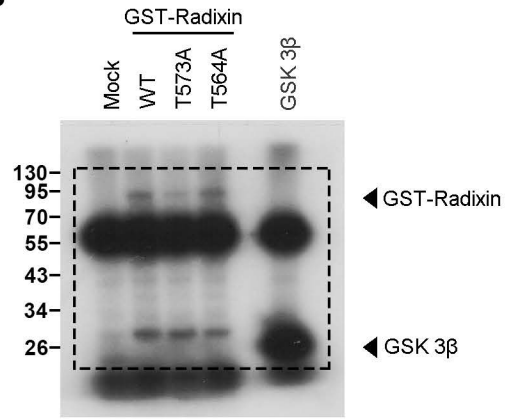
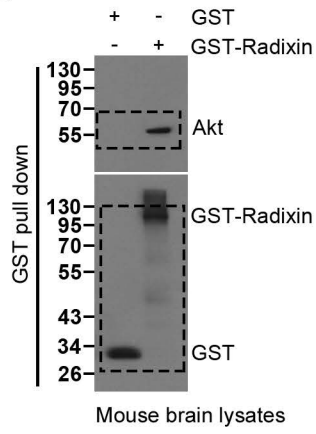
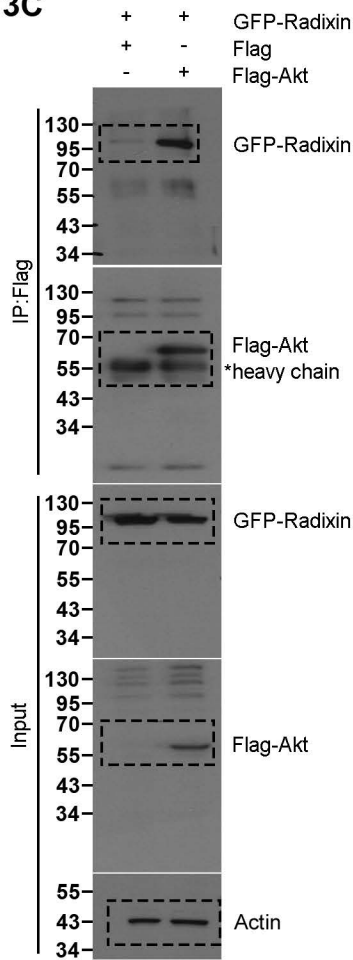


Figure S6

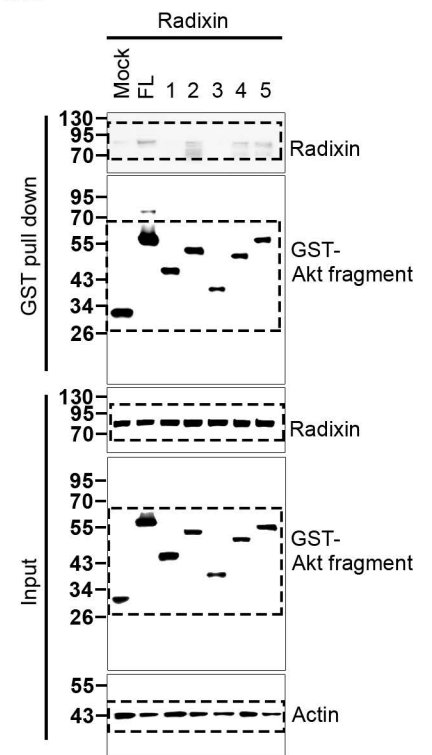
3B



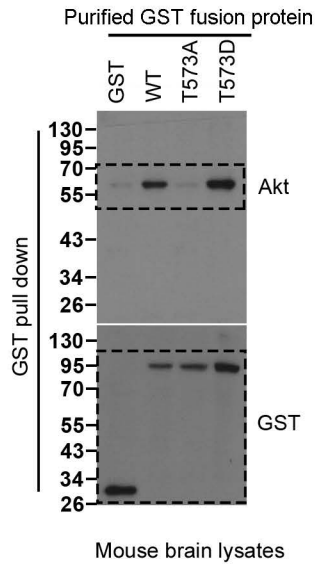
3C



3D



3E



3F

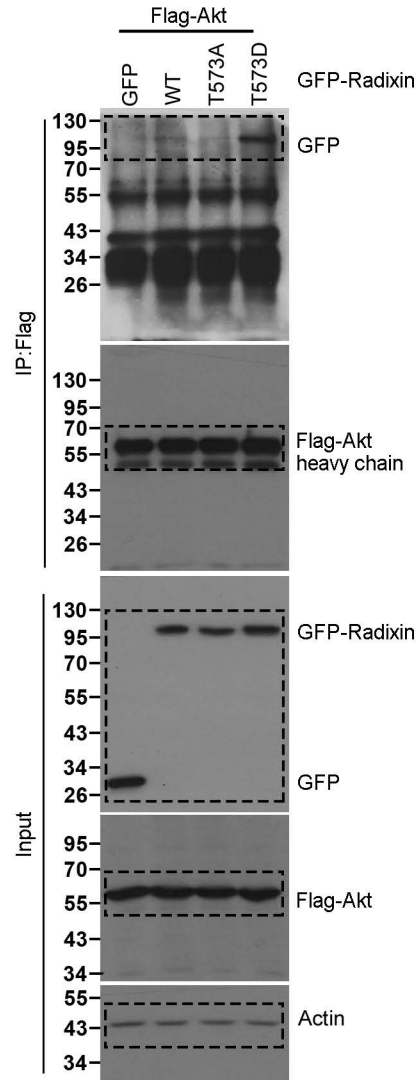
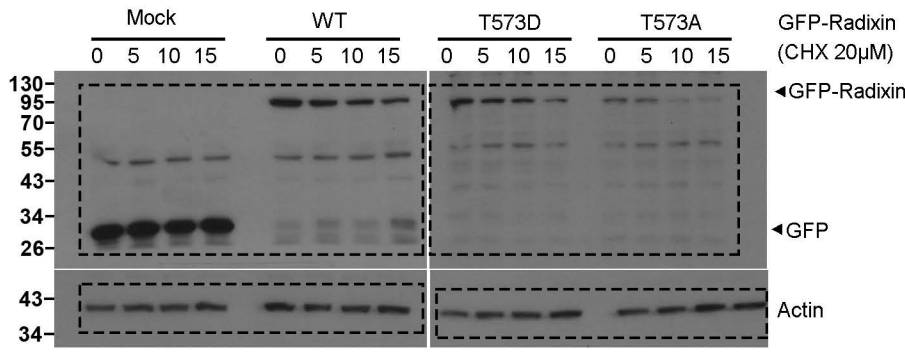
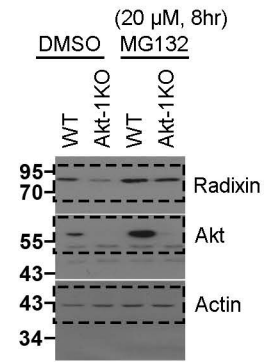


Figure S7

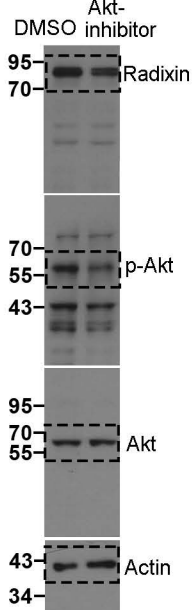
4A



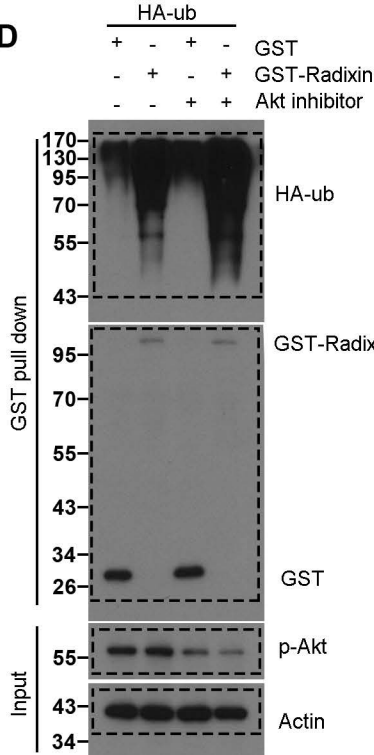
4B



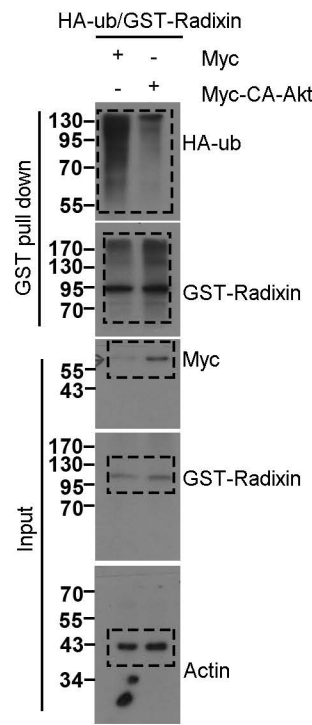
4C



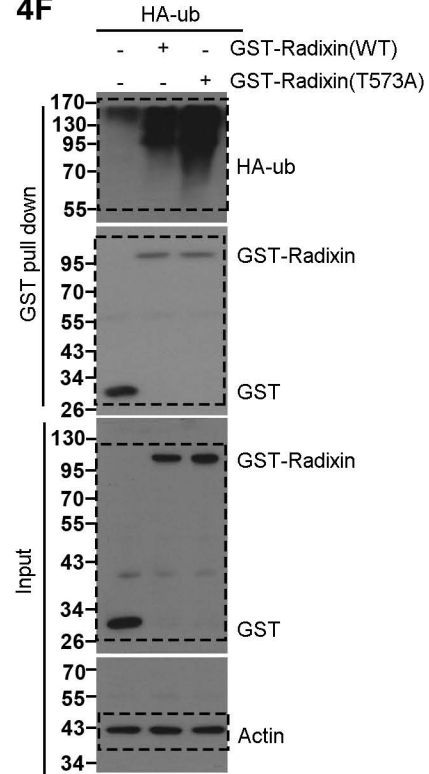
4D



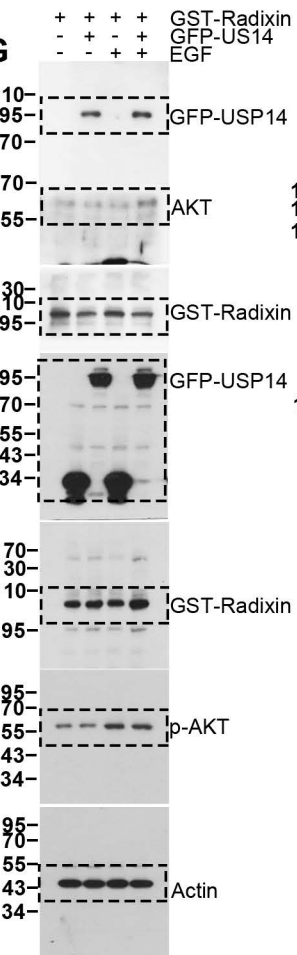
4E



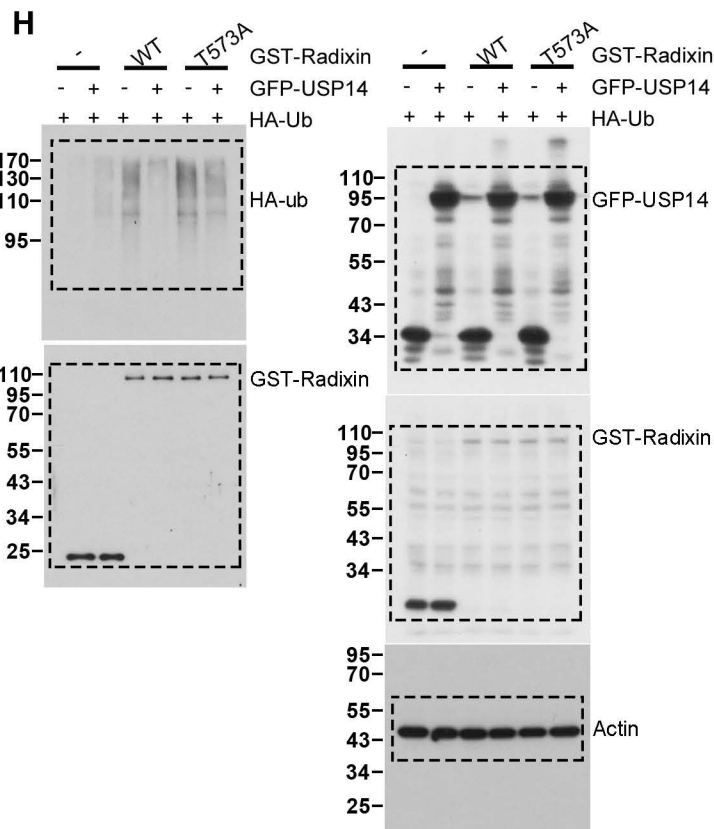
4F



G



H



I

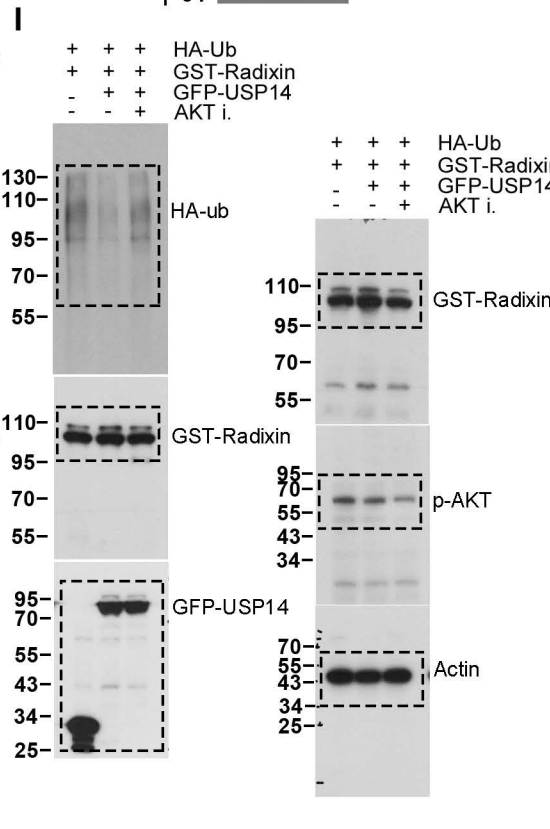


Figure S8

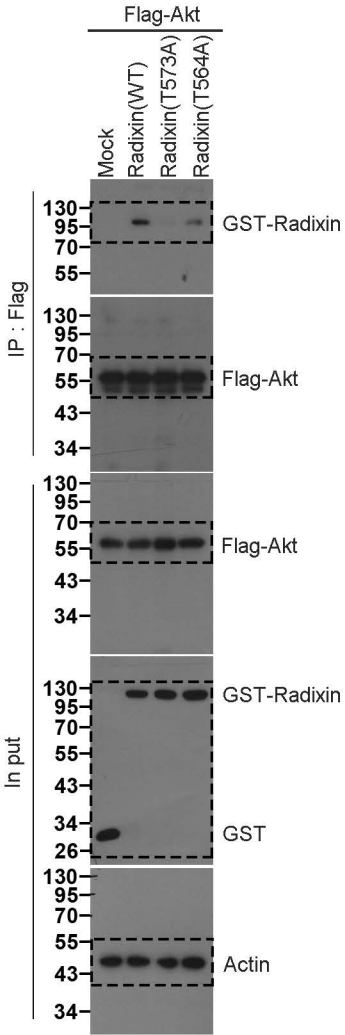


Figure S9

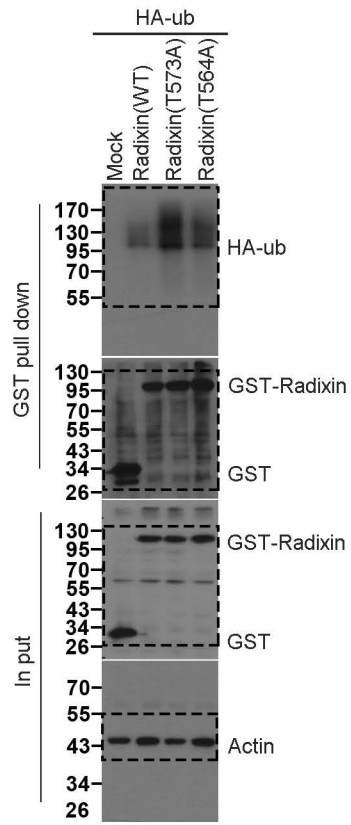


Figure S10

