

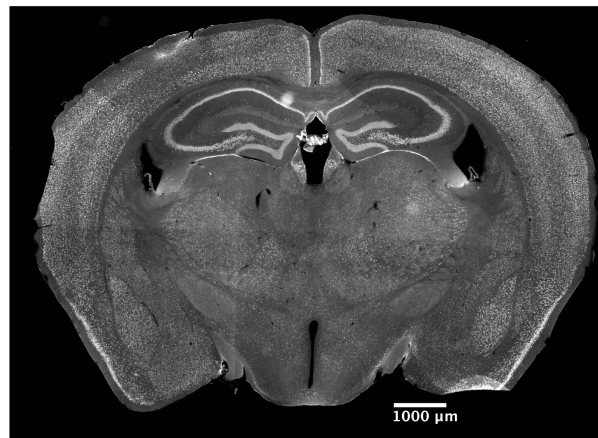
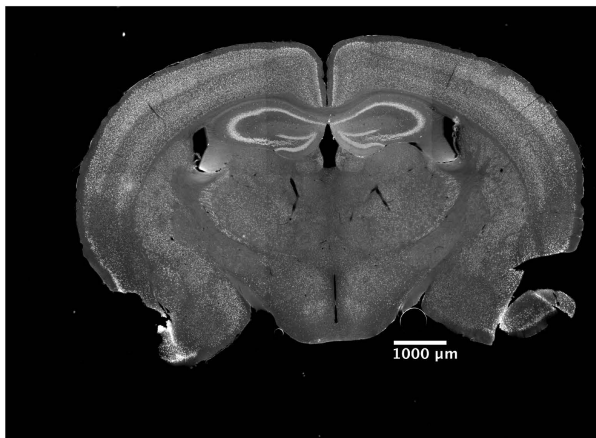
Supplemental Fig. 1. mTORC1 hyperactivation throughout the brain of *Depdc5cc+* mice. Composite images from coronal brain sections from control (left panels) and *Depdc5cc+* (right panels) mouse brains stained with NeuN and p-S6. Sections were matched for anatomic localization between mice and images taken at the same scale, scale bars = 1000 μ m. Sections from *Depdc5cc+* (n=4) and littermate control (n=3) brains.

Supplemental Fig. 2. mTORC1 hyperactivation is not present in oligodendrocytes of *Depdc5cc+* mice. (A) No evidence of colocalization of Olig2 (green) and p-S6 (red) in the cortex, hippocampus, or white matter, scale bars = 100 μ m. (B) High power image at the corpus callosum, scale bar = 50 μ m. Sections from *Depdc5cc+* (n=4) and littermate control (n=3) brains.

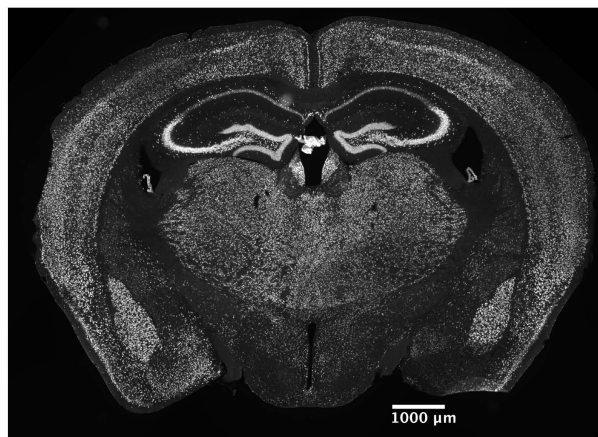
Control

Depdc5 cc+

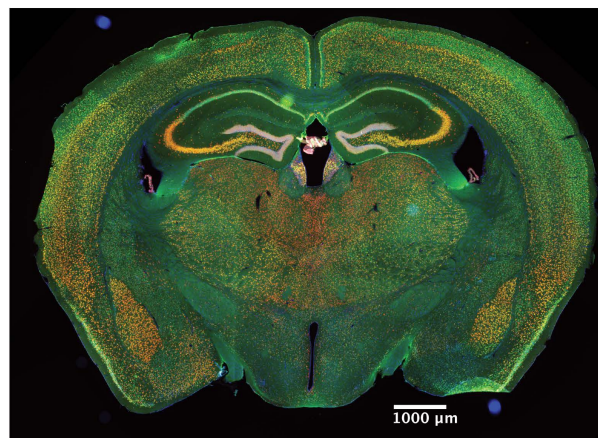
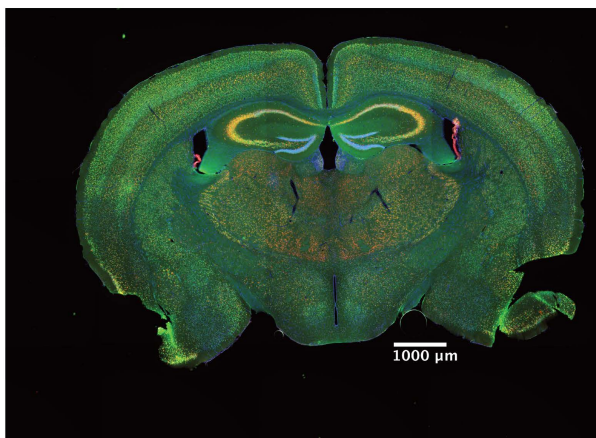
NeuN



p-S6
(240/244)



Merge
(NeuN - green)
(p-S6 - red)
(DAPI - blue)



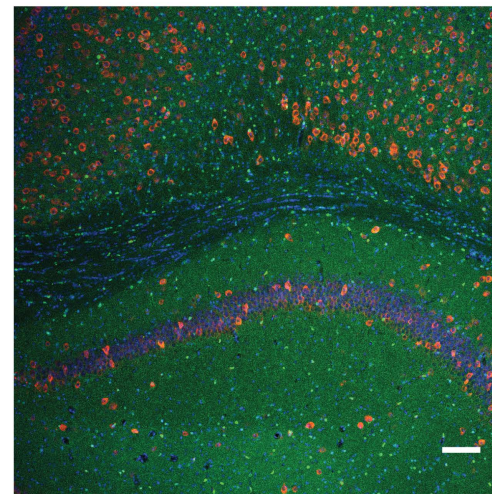
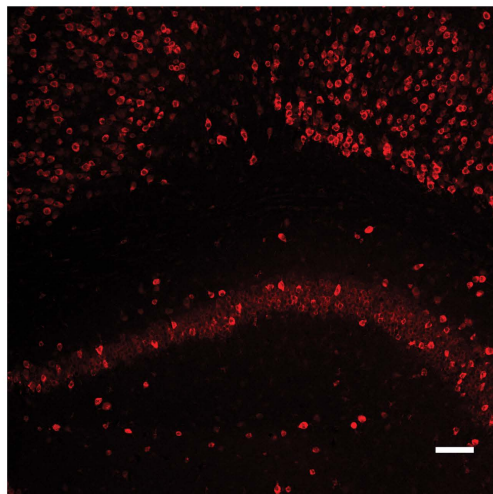
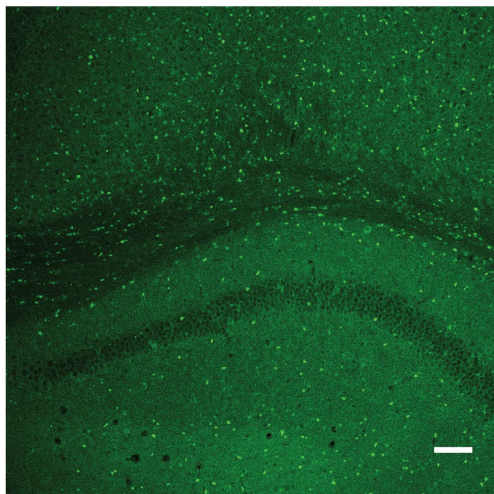
A.

Olig2

p-S6

Merge with DAPI

Depdc5 cc+



B.

Olig2

p-S6

Merge with DAPI

Depdc5 cc+

