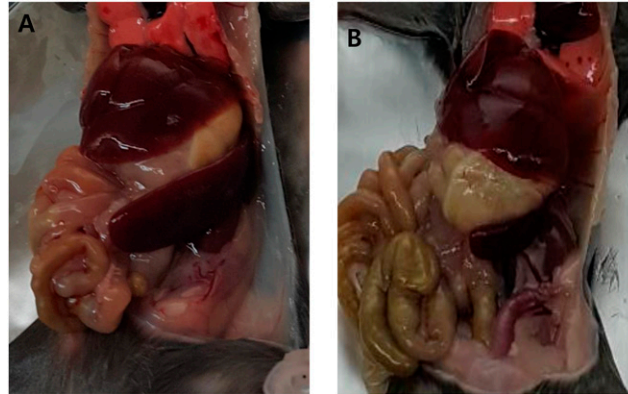
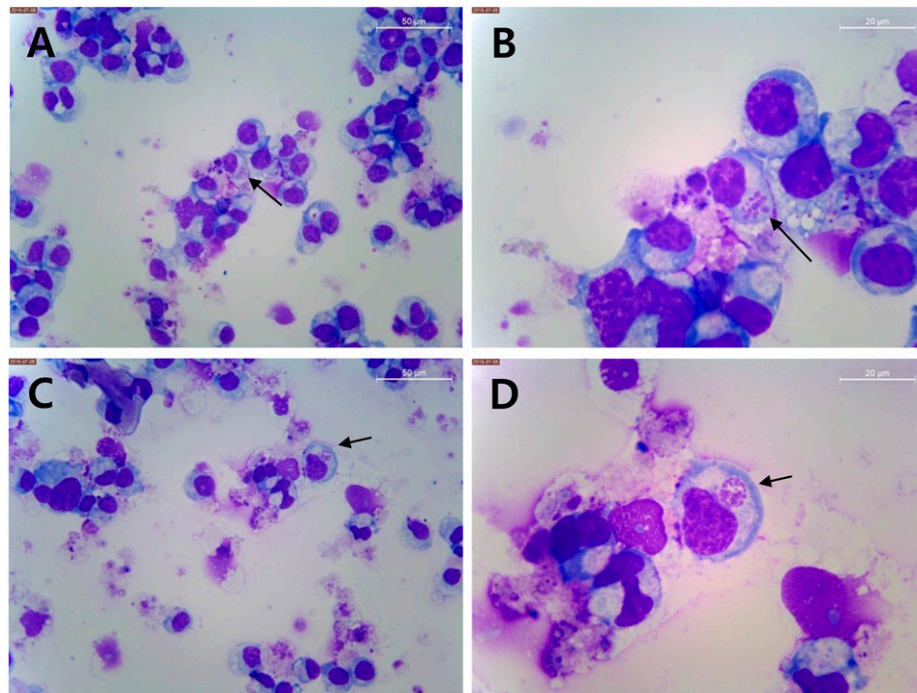


SUPPLEMENTAL FIGURE 1. An aspirate smear showing hemphagocytic histiocyte-engulfing platelets or neutrophils as well as a histiocyte containing mulberry-like intravacuolar inclusions suggestive of morulae of *Anaplasma phagocytophilum* (Wright-Giemsa stain, $\times 1000$).



SUPPLEMENTAL FIGURE 2. Spleen of a C3H/HeJ mouse infected with the patient's buffy coat; day 14; splenomegaly. The spleen is twice as large as normal.



SUPPLEMENTAL FIGURE 3. Light micrograph of *Anaplasma phagocytophilum* cultured in a human promyelocytic cell line (A-D; Diff-Quik staining). Original magnification (A and C; $\times 400$, B and D; $\times 1,000$).