

BioGeoBEARS DIVALIKE+J on Leps M0\_unconstrained  
 ancstates: global optim, 3 areas max. d=0.0036; e=0; j=0.0334; LnL=-7 0.73

BioGeoBEARS BAYAREALIKE+J on Leps M0\_unconstrained  
 ancstates: global optim, 2 areas max. d=0.0026; e=0; j=0.0346; LnL=-34.71

BioGeoBEARS DIVALIKE+J on Leps M0\_unconstrained  
 ancstates: global optim, 3 areas max. d=0.0012; e=0; j=0.0113; LnL=-96.00

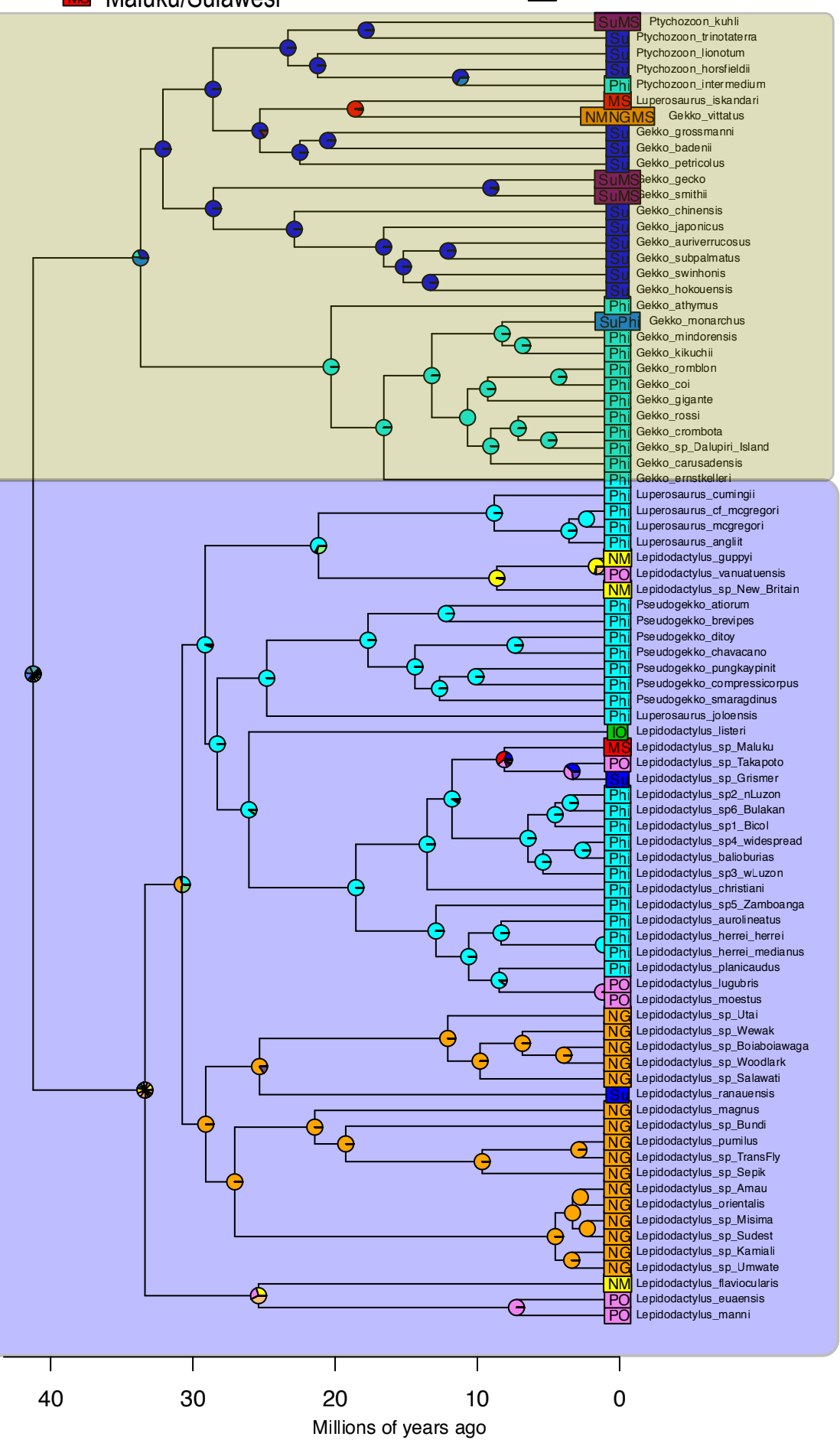
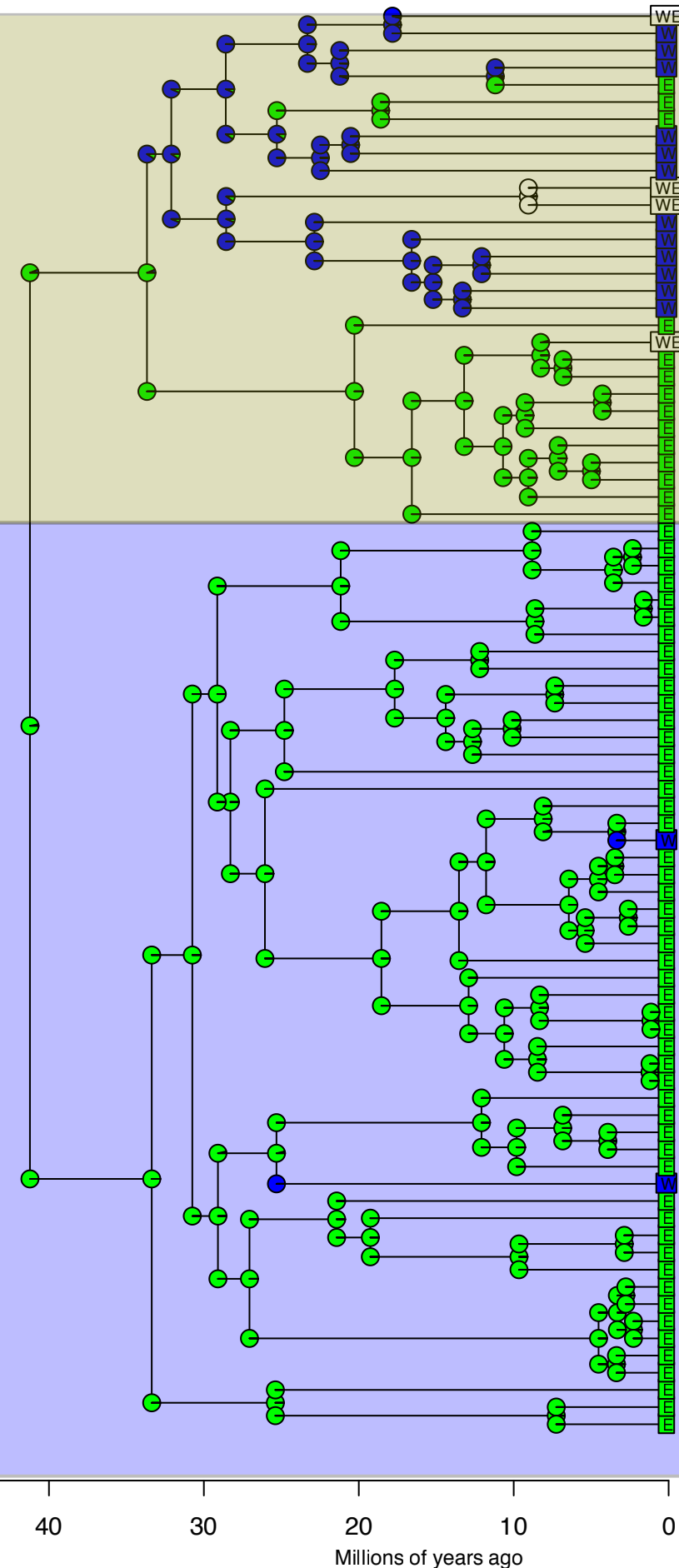
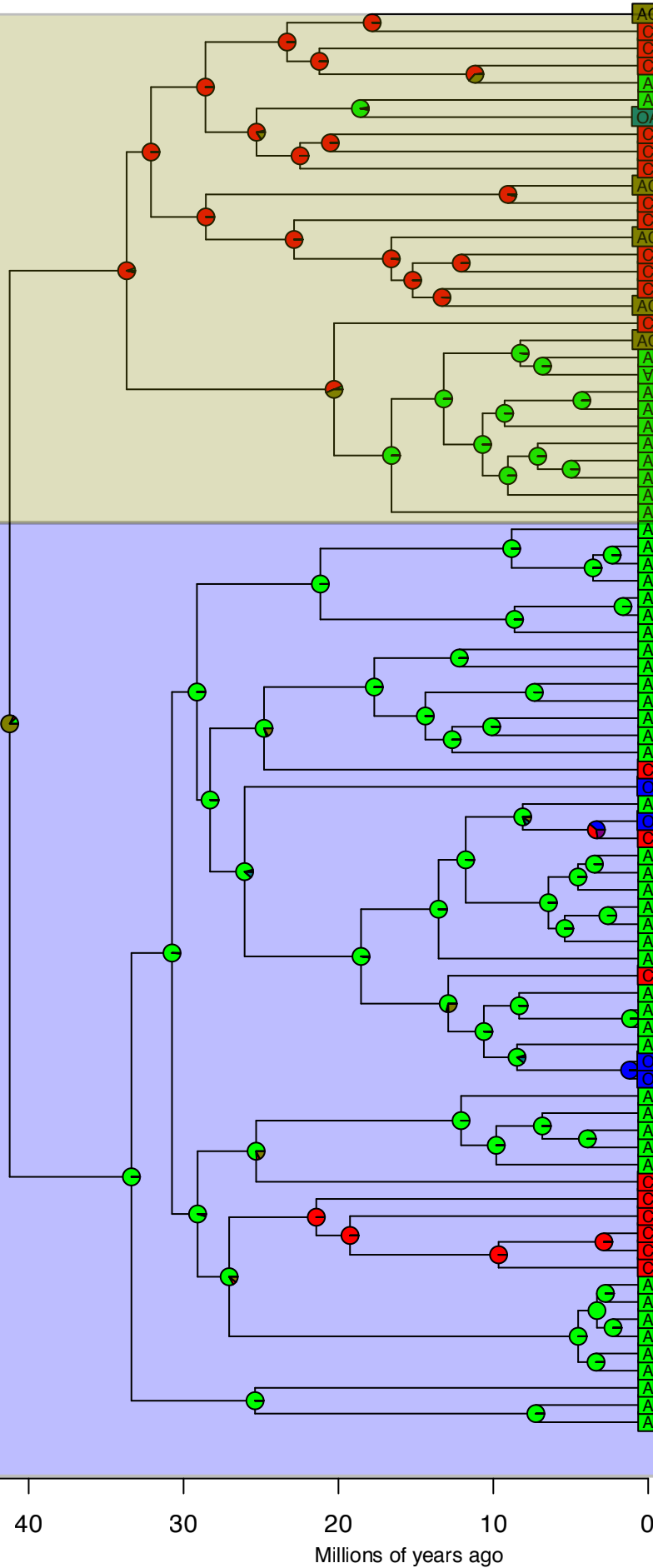
Continental Arc Oceanic

Sunda Shelf Not Sunda Shelf

Sunda shelf Philippines Pacific Ocean  
 Indian Ocean New Guinea  
 Maluku/Sulawesi North Melnesia

Gekko grp

Lepidodactylus s.l.



- ST Ptychozoon\_kuhii
- ST Ptychozoon\_trinotaterra
- ST Ptychozoon\_ionotum
- ST Ptychozoon\_horsfieldii
- ST Ptychozoon\_intermedium
- MS Luperosaurus\_iskandari
- NMNGMS Gekko\_vittatus
- ST Gekko\_grossmanni
- ST Gekko\_badenii
- ST Gekko\_petricolus
- ST Gekko\_gecko
- ST Gekko\_smithii
- ST Gekko\_chinensis
- ST Gekko\_japonicus
- ST Gekko\_auriverrucosus
- ST Gekko\_subpalmatum
- ST Gekko\_swinhoni
- ST Gekko\_hokouensis
- Ph Gekko\_athymus
- SuPh Gekko\_monarchus
- Ph Gekko\_mindorensis
- Ph Gekko\_kikuchii
- Ph Gekko\_romblon
- Ph Gekko\_coi
- Ph Gekko\_gigante
- Ph Gekko\_rossi
- Ph Gekko\_crombota
- Ph Gekko\_sp\_Dalupiri\_Island
- Ph Gekko\_carusadensis
- Ph Gekko\_ernstkaeleri
- Ph Luperosaurus\_cumingii
- Ph Luperosaurus\_cf\_mcgregori
- Ph Luperosaurus\_mcgregori
- Ph Luperosaurus\_angliit
- NM Lepidodactylus\_guppyi
- PO Lepidodactylus\_vanuatuensis
- NM Lepidodactylus\_sp\_New\_Britain
- Ph Pseudogekko\_atiorum
- Ph Pseudogekko\_brevipes
- Ph Pseudogekko\_ditoy
- Ph Pseudogekko\_chavacano
- Ph Pseudogekko\_pungkaypinit
- Ph Pseudogekko\_compressicorpus
- Ph Pseudogekko\_smaragdinus
- Ph Luperosaurus\_joloensis
- IC Lepidodactylus\_listeri
- MS Lepidodactylus\_sp\_Maluku
- PO Lepidodactylus\_sp\_Takapoto
- ST Lepidodactylus\_sp\_Grismar
- Ph Lepidodactylus\_sp2\_nLuzon
- Ph Lepidodactylus\_sp6\_Bulakan
- Ph Lepidodactylus\_sp1\_Bicol
- Ph Lepidodactylus\_sp4\_widespread
- Ph Lepidodactylus\_balioburias
- Ph Lepidodactylus\_sp3\_wLuzon
- Ph Lepidodactylus\_christiani
- Ph Lepidodactylus\_sp5\_Zamboanga
- Ph Lepidodactylus\_aurolineatus
- Ph Lepidodactylus\_herrei\_herrei
- Ph Lepidodactylus\_herrei\_medianus
- Ph Lepidodactylus\_planicaudus
- PO Lepidodactylus\_lugubris
- PO Lepidodactylus\_moestus
- NG Lepidodactylus\_sp\_Utai
- NG Lepidodactylus\_sp\_Wewak
- NG Lepidodactylus\_sp\_Boiaboaiwaga
- NG Lepidodactylus\_sp\_Woodlark
- NG Lepidodactylus\_sp\_Salawati
- ST Lepidodactylus\_ranauensis
- NG Lepidodactylus\_magnus
- NG Lepidodactylus\_sp\_Bundi
- NG Lepidodactylus\_pumilus
- NG Lepidodactylus\_sp\_TransFly
- NG Lepidodactylus\_sp\_Sepik
- NG Lepidodactylus\_sp\_Amau
- NG Lepidodactylus\_orientalis
- NG Lepidodactylus\_sp\_Misima
- NG Lepidodactylus\_sp\_Sudest
- NG Lepidodactylus\_sp\_Kamiali
- NG Lepidodactylus\_sp\_Umwate
- NM Lepidodactylus\_flaviocularis
- PO Lepidodactylus\_euaensis
- PO Lepidodactylus\_manni

Millions of years ago

Millions of years ago

Millions of years ago