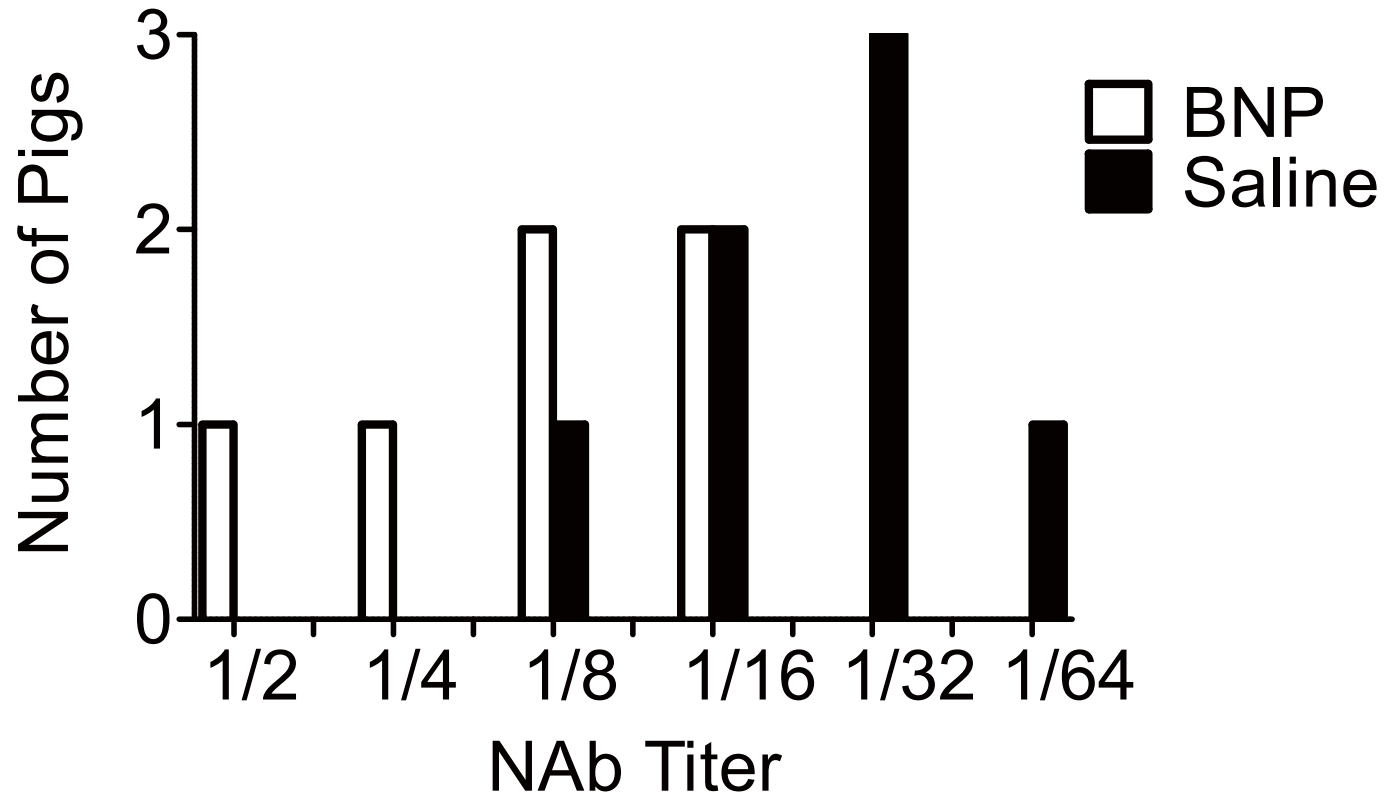
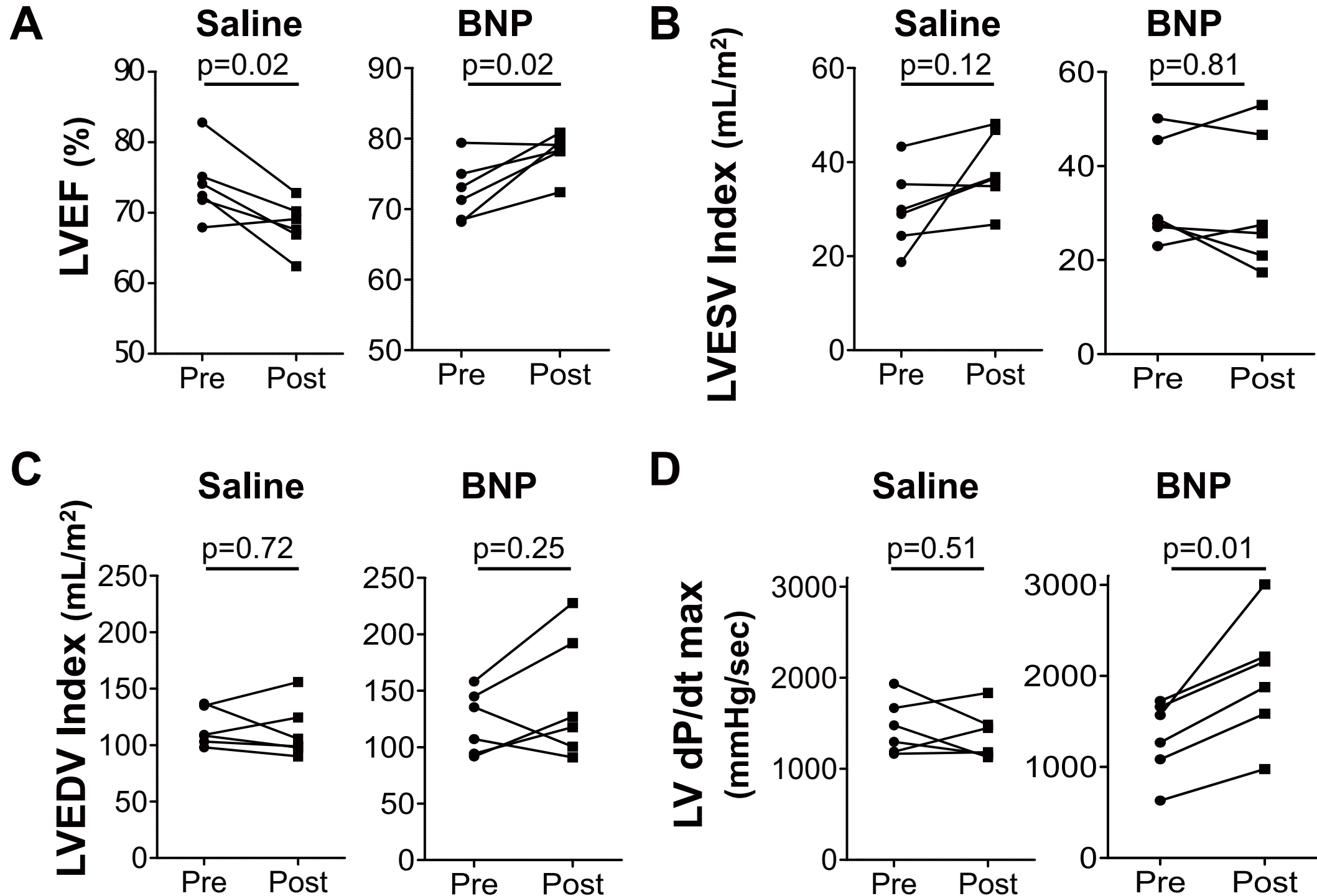


Supplemental Figure 1: Neutralizing antibody titers against BNP116 in HF study

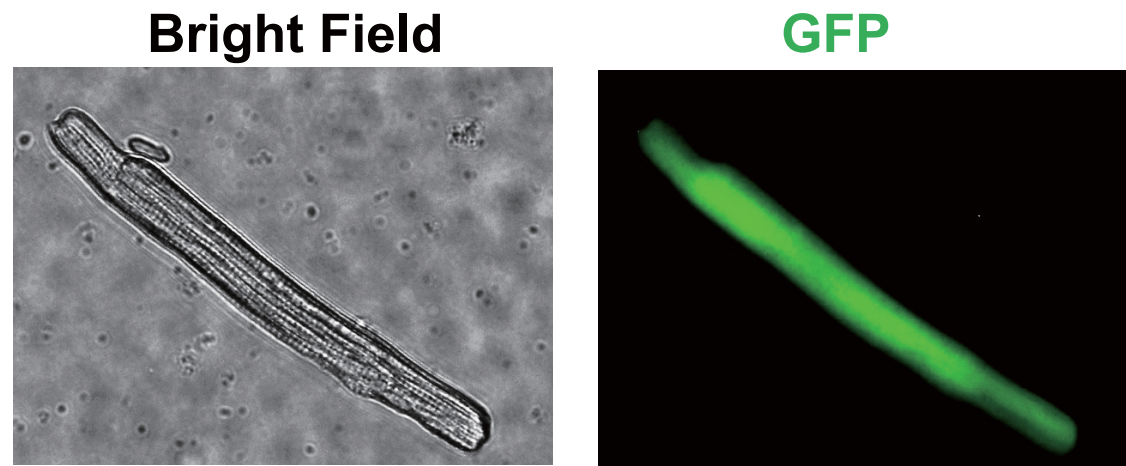


Supplemental Figure 2: LV systolic function and volumes between saline and BNP, before and after gene therapy

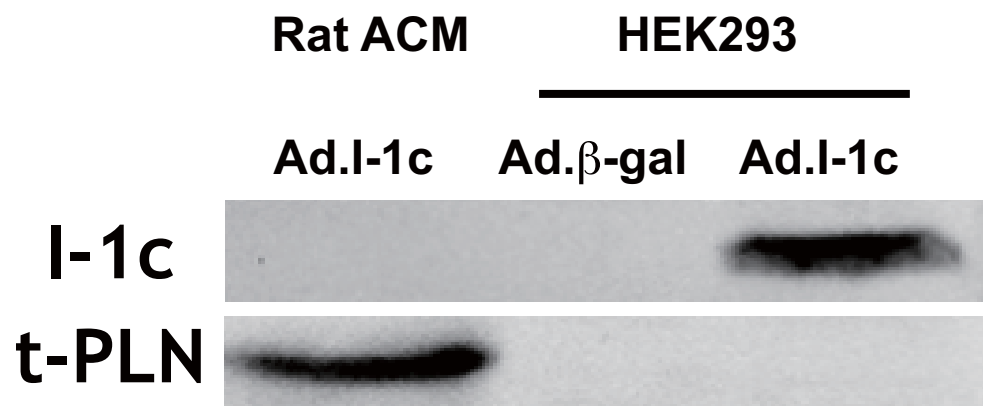


Supplemental Figure 3: I-1c protein detection in HEK293 cells and isolated cardiomyocytes

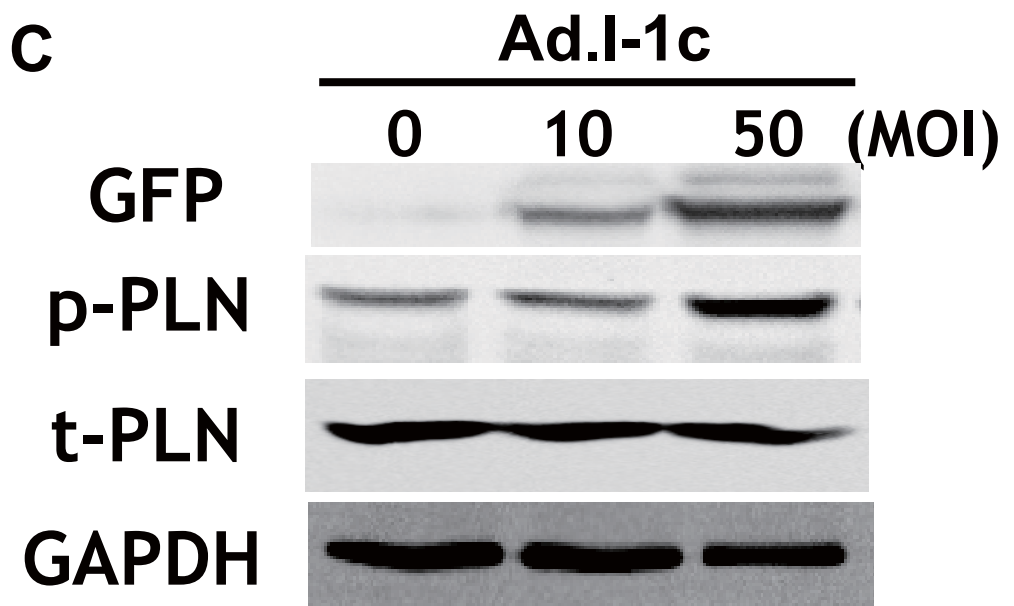
A



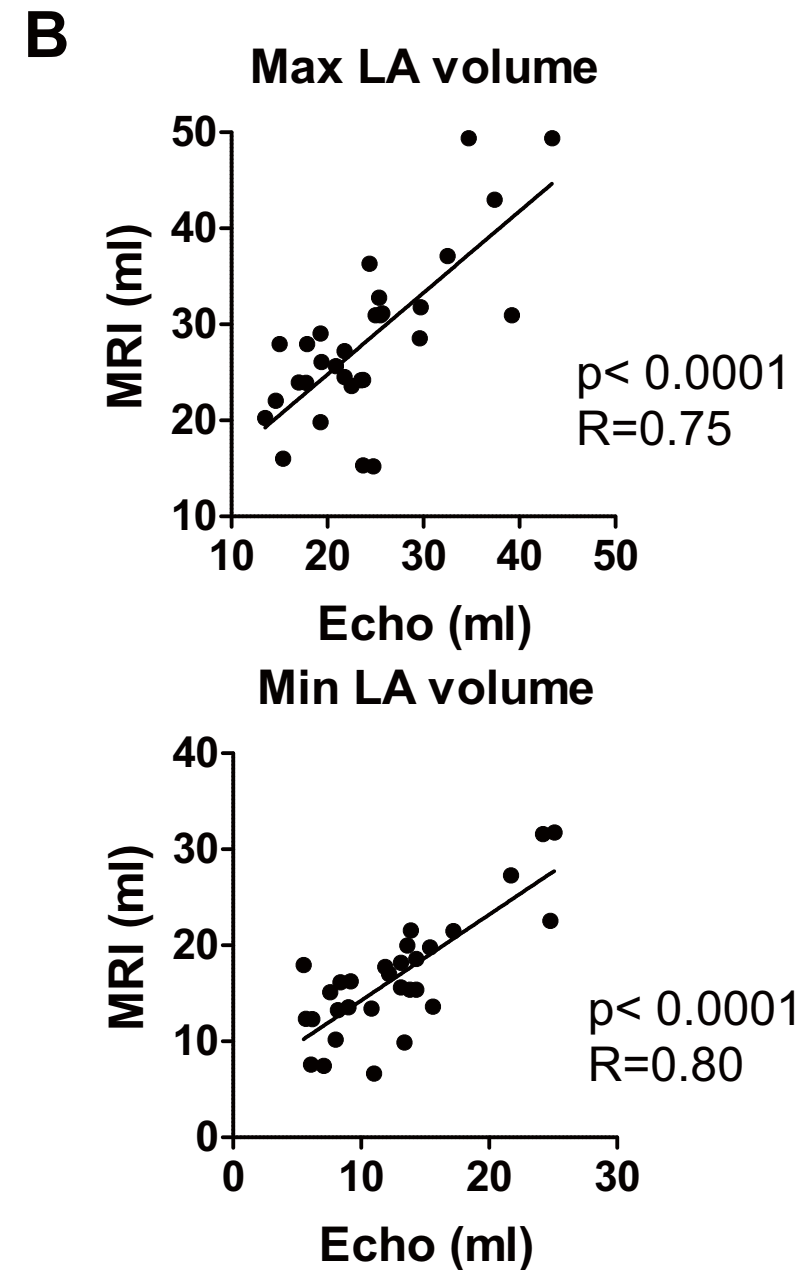
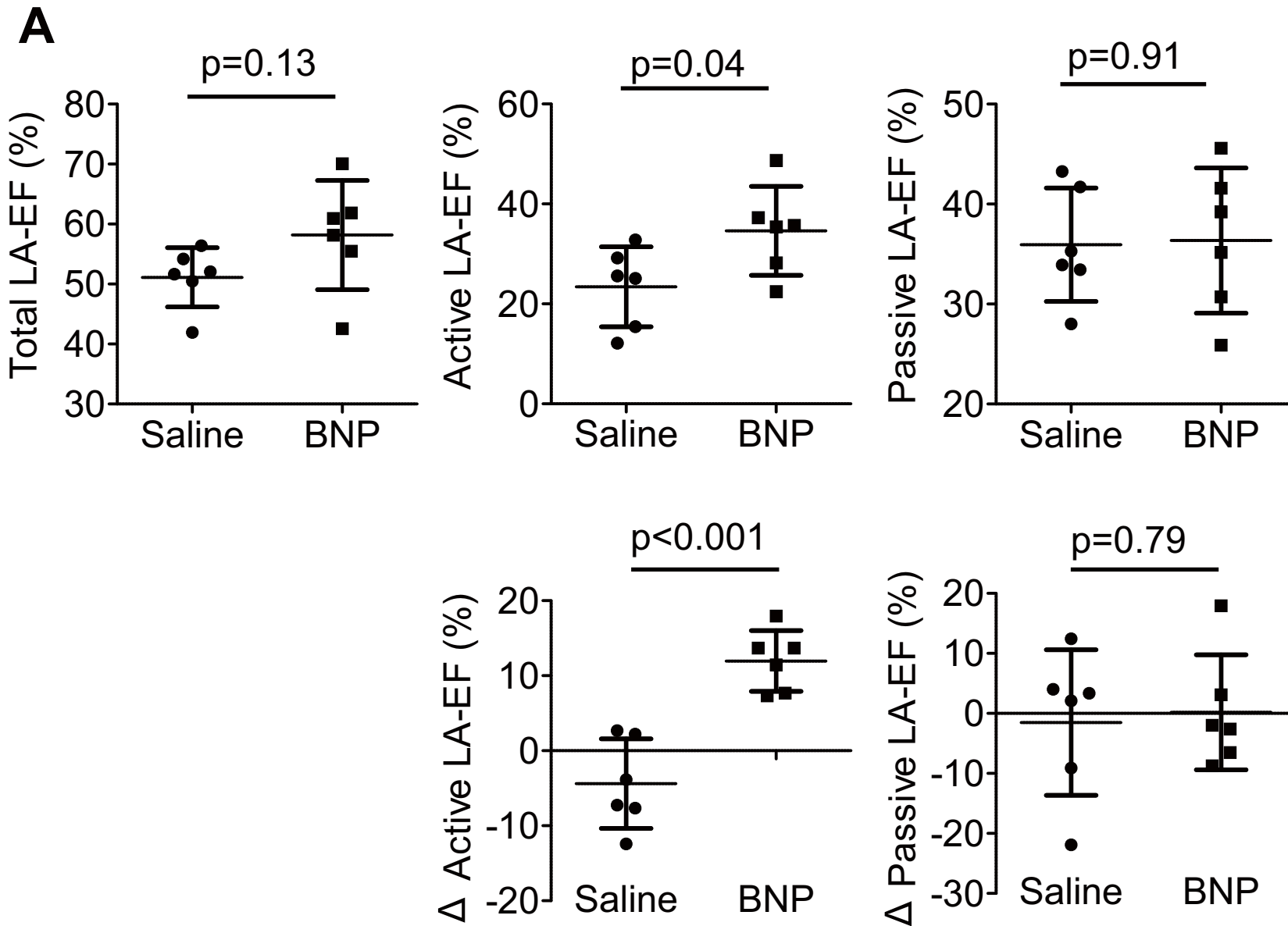
B



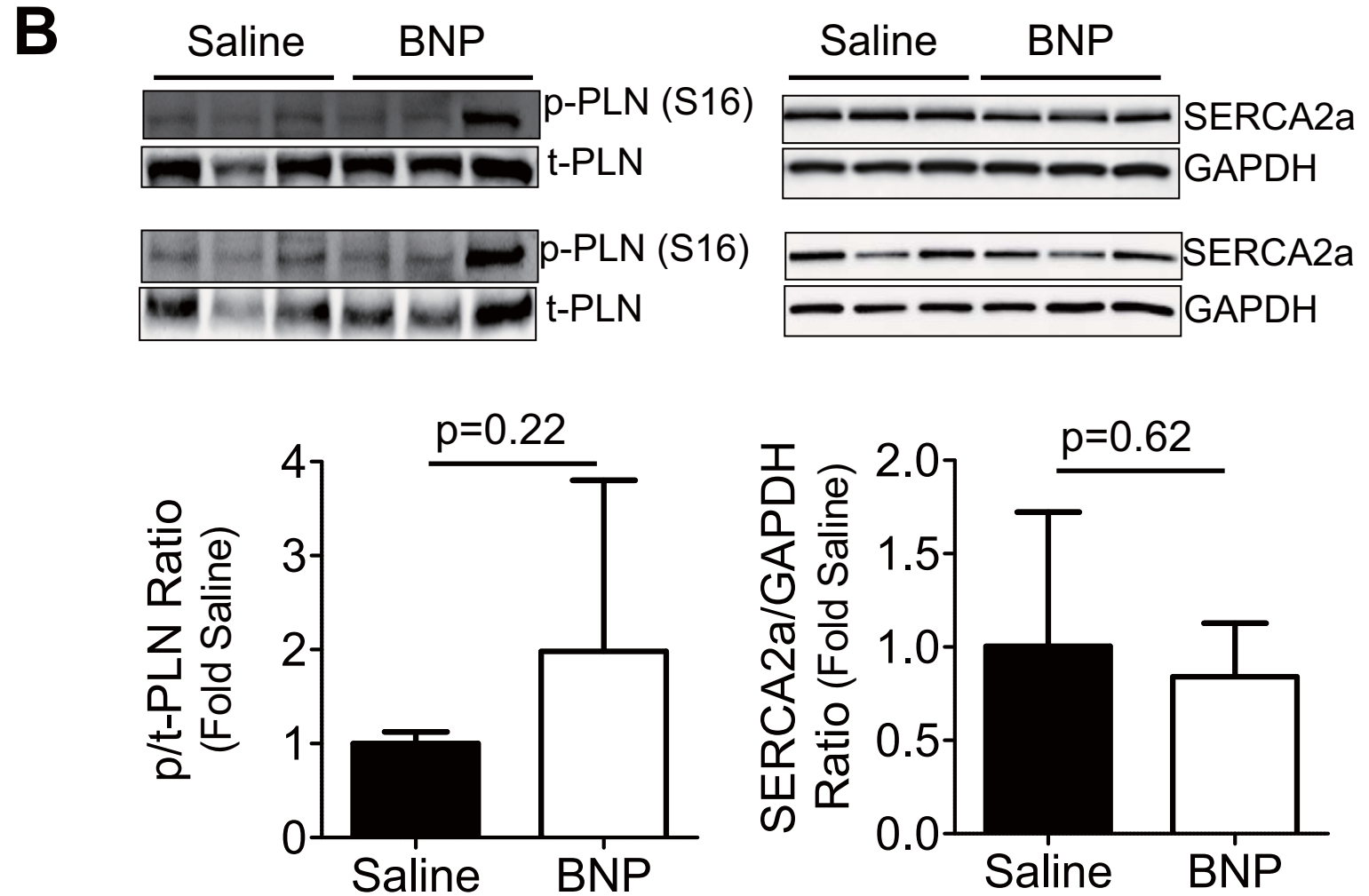
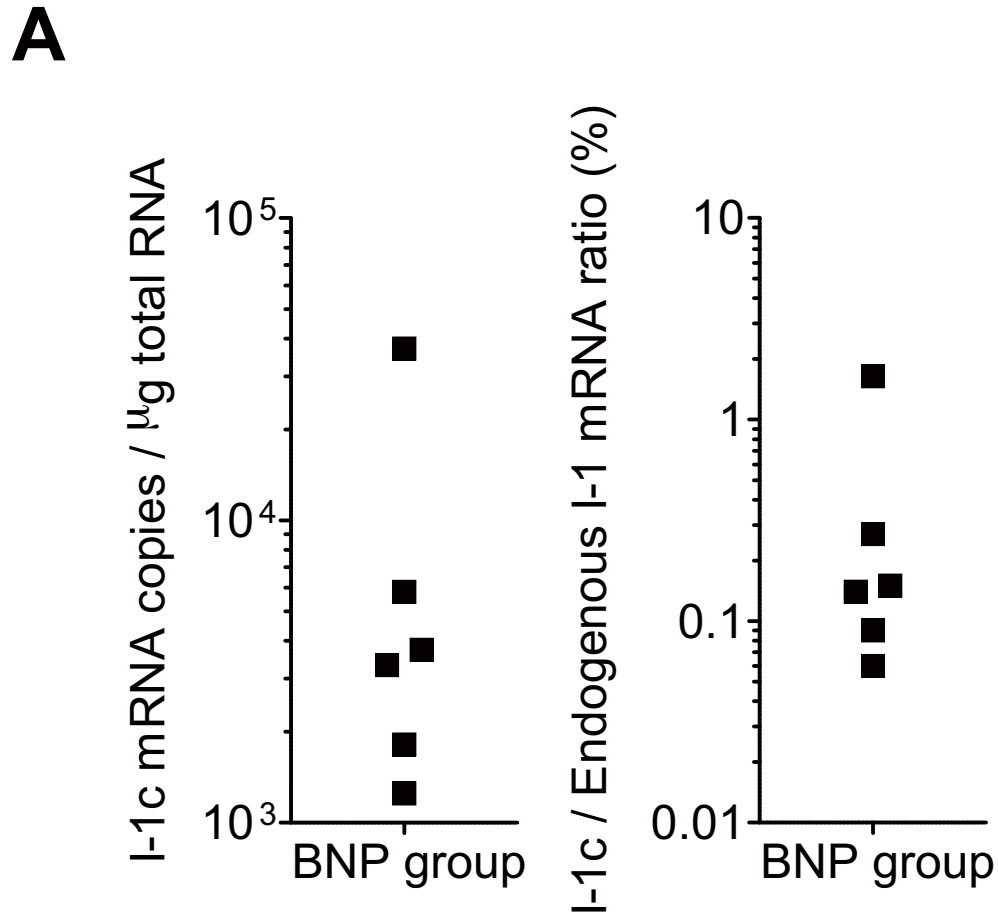
C



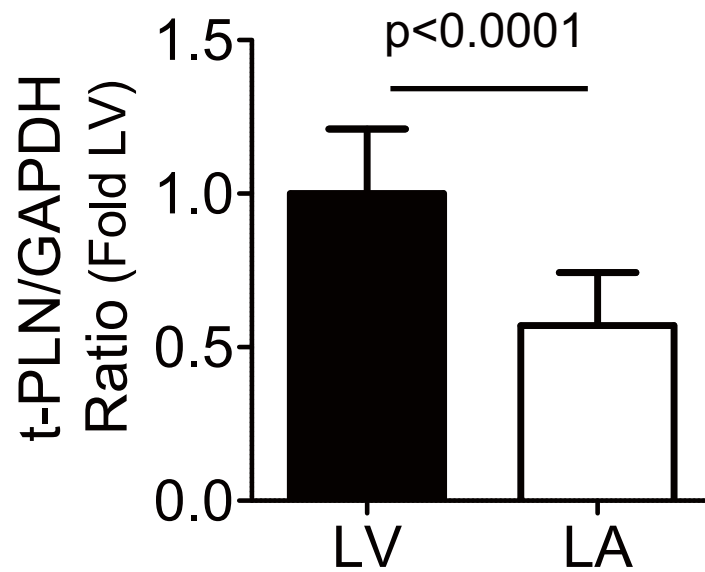
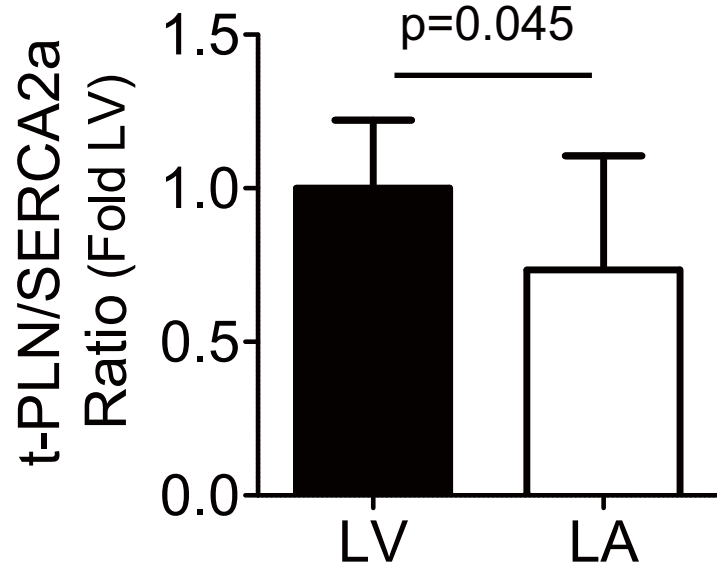
Supplemental Figure 4: LA 3D echocardiography data



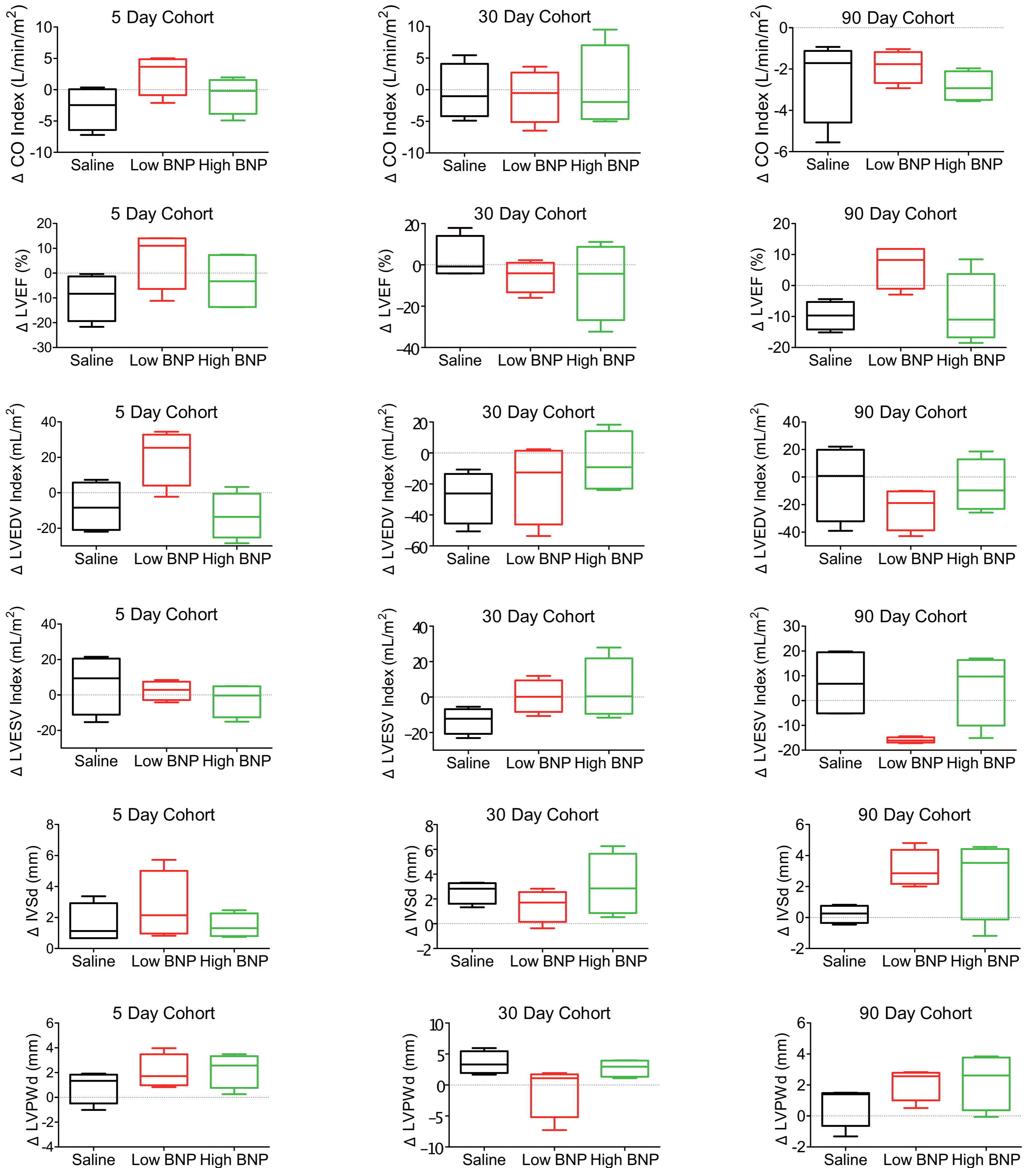
Supplemental Figure 5: Impact of I-1c gene transfer on I-1c expression and its downstream gene expression in the LA



Supplemental Figure 6: Total phospholamban expression in LA compared to LV

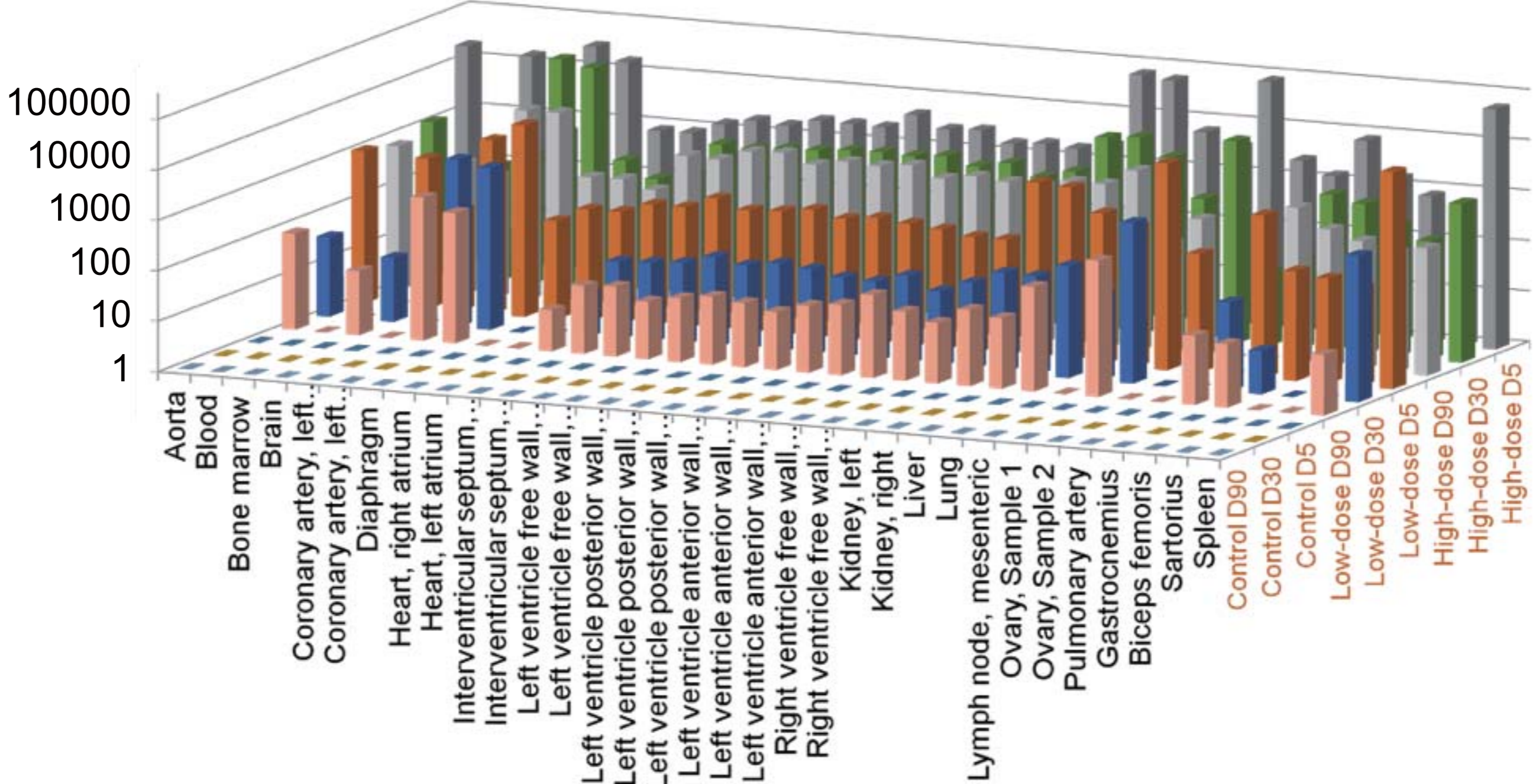


Supplemental Figure 7: Comparisons of changes in echocardiographic parameters after vector administration in naïve pigs



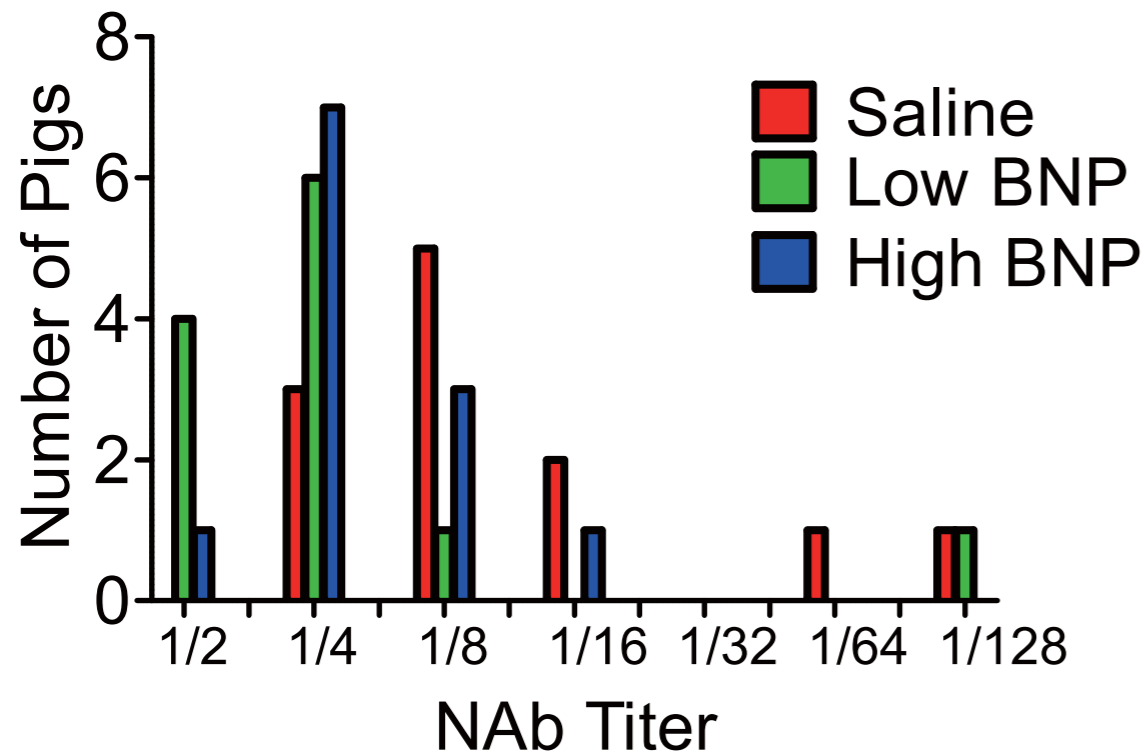
Supplemental Figure 8: Vector genome distribution after different dose and time point in naïve pigs

Vector Genome Copies/ μg gDNA

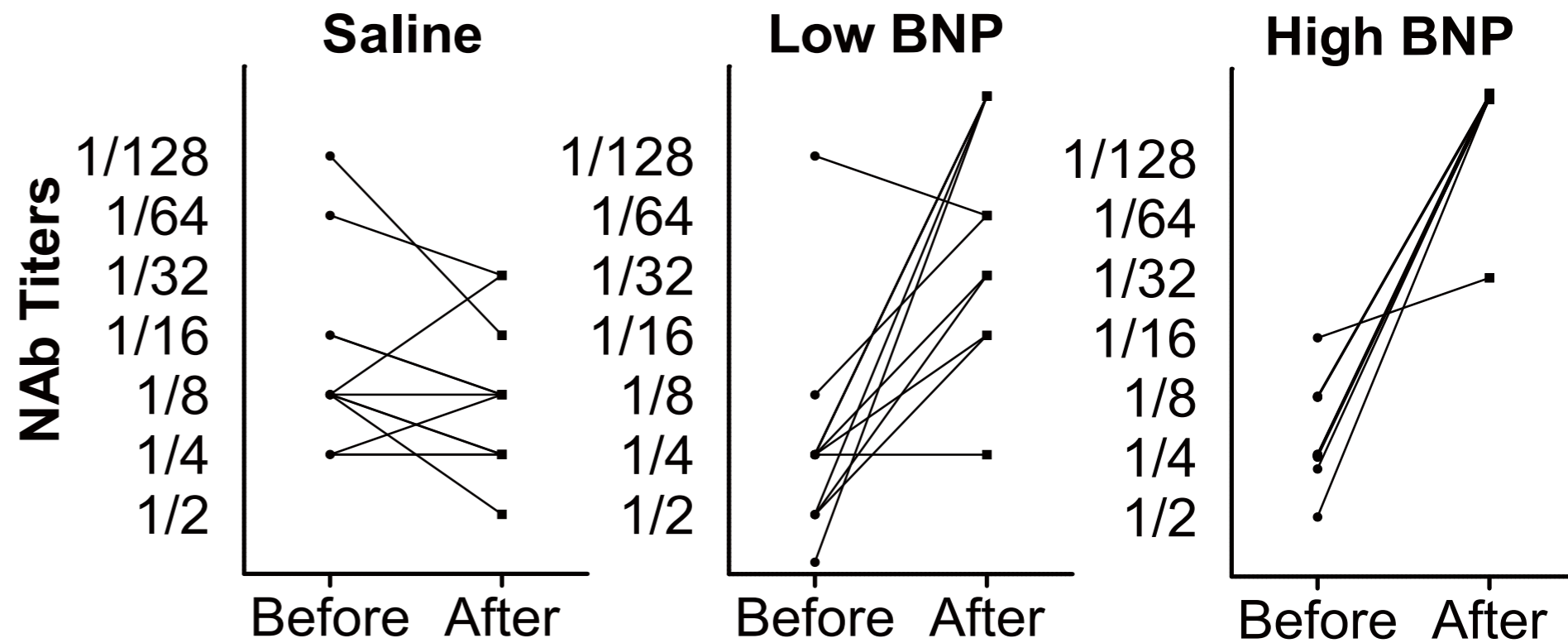


Supplemental Figure 9: Neutralizing antibody titers against BNP116 in naïve pigs and the changes in titer after vector delivery

A



B



Supplemental Figure 10: Lack of T-cell infiltration in the LV and absence of pathological histology findings associated with vector delivery in the off-target organs.

