

## **Cerebral ischemia induces the aggregation of proteins linked to neurodegenerative diseases**

Anja Kahl<sup>1</sup>, Ismary Blanco<sup>1</sup>, Katherine Jackman, Juhi Baskar, Harihar Milaganur Mohan, Reunet Rodney-Sandy, Sheng Zhang<sup>#</sup>, Costantino Iadecola and Karin Hochrainer<sup>\*</sup>

Feil Family Brain and Mind Research Institute, Weill Cornell Medicine, New York, NY10065,  
USA

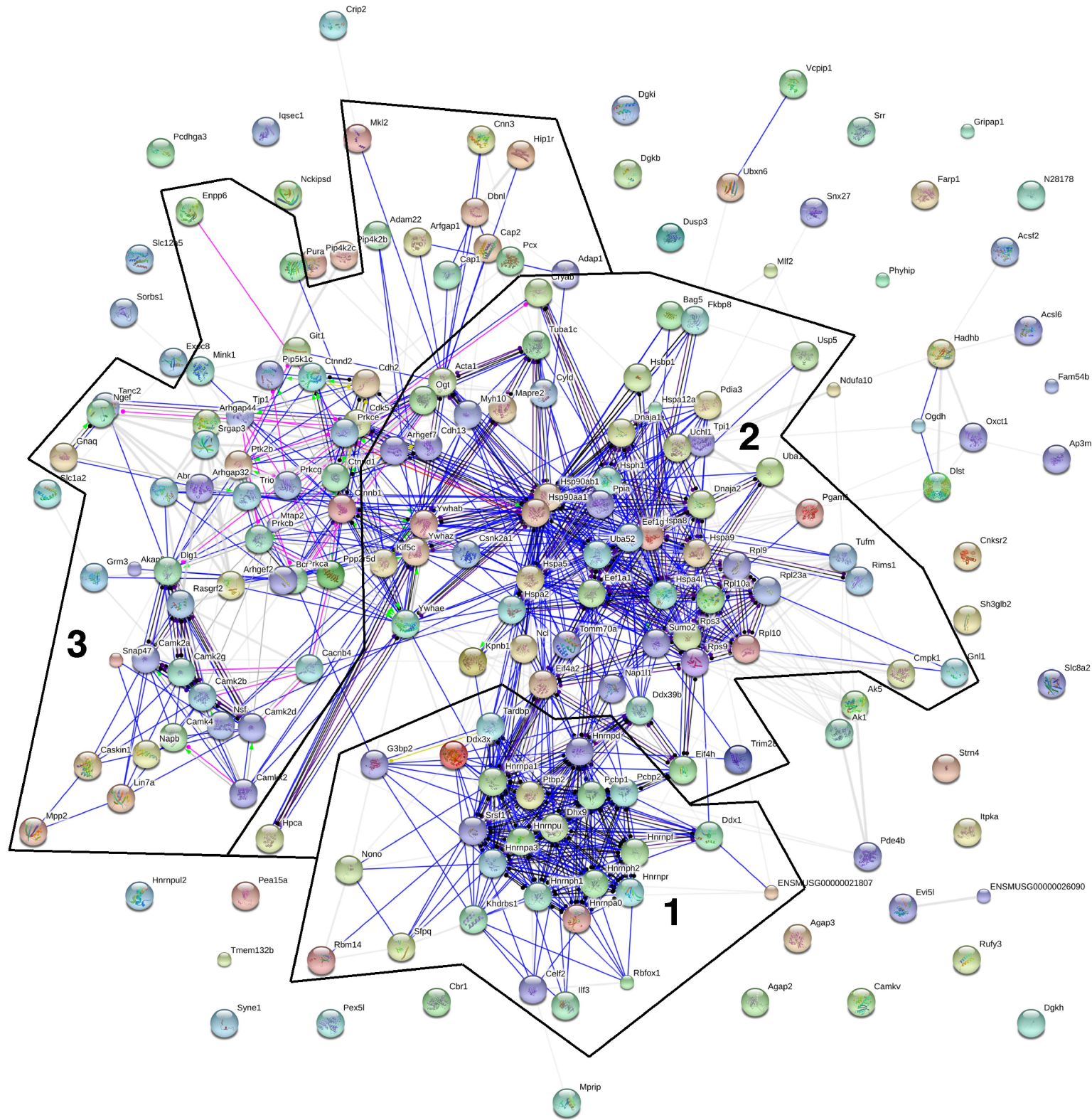
<sup>#</sup>Institute of Biotechnology and Life Sciences Biotechnologies, Cornell University, Ithaca,  
NY14853, USA

<sup>1</sup>These authors contributed equally to this work

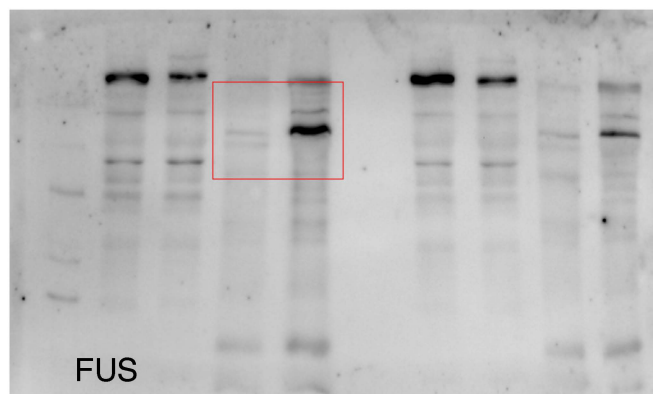
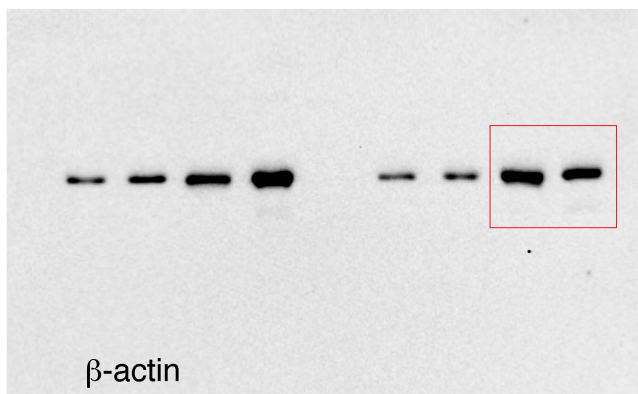
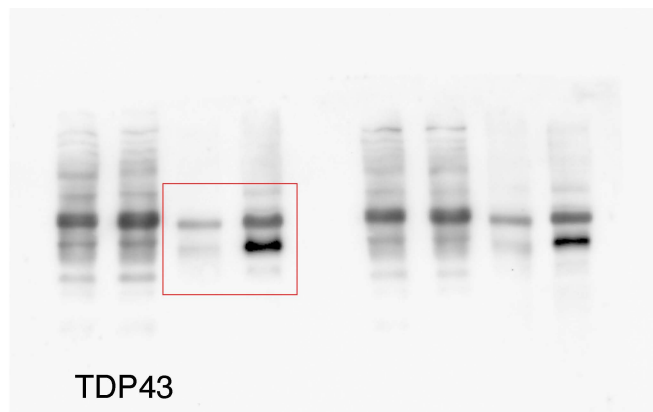
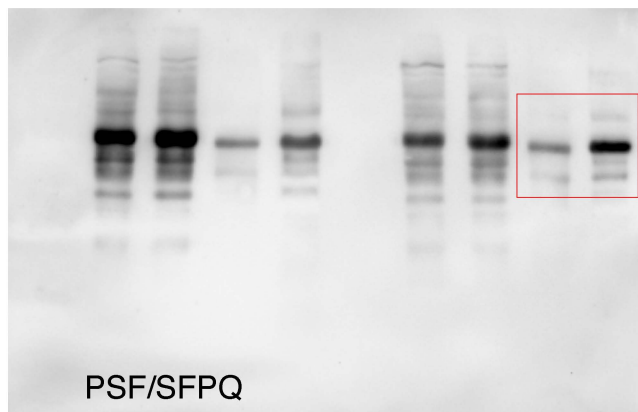
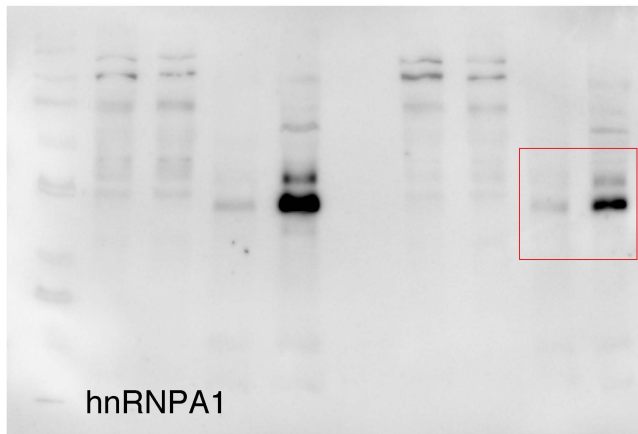
<sup>\*</sup>Corresponding Author:

407 East 61<sup>st</sup> Street, RR-406, New York, NY10065, USA; Phone 1-646-962-8258; Fax 1-646-962-0535; Email [kah2015@med.cornell.edu](mailto:kah2015@med.cornell.edu).

Supplementary Figure S1: high-resolution image to Figure 1E



Supplementary Figure S2: full-size blots to Figure 2B



Supplementary Figure S3: full-size blots to Figure 2C

