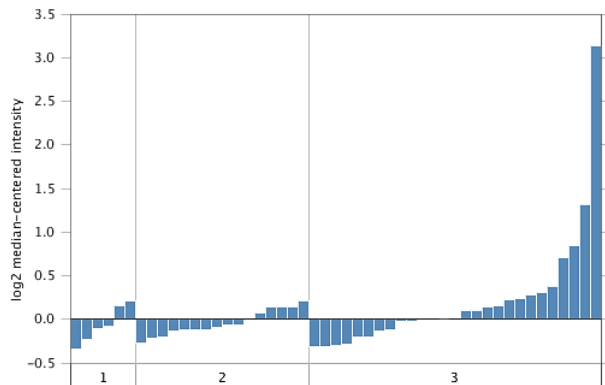
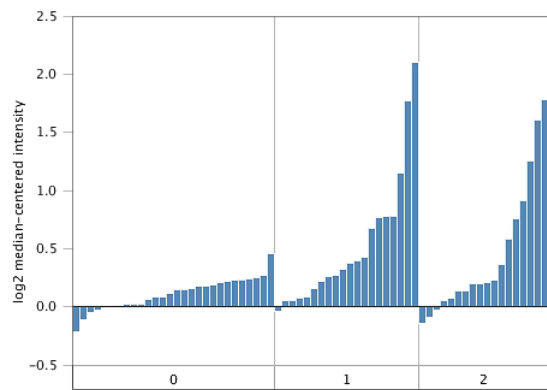


Farmer



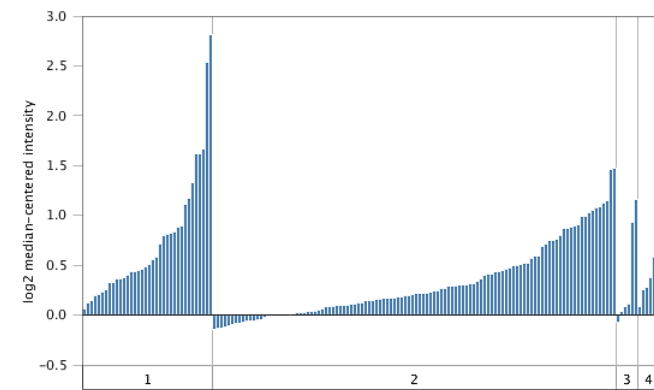
1. Apocrine Breast Carcinoma (6); 2. Basal-Like Subtype of Invasive Breast Carcinoma (16); 3. Luminal-Like Subtype of Invasive Breast Carcinoma (27)

Ma



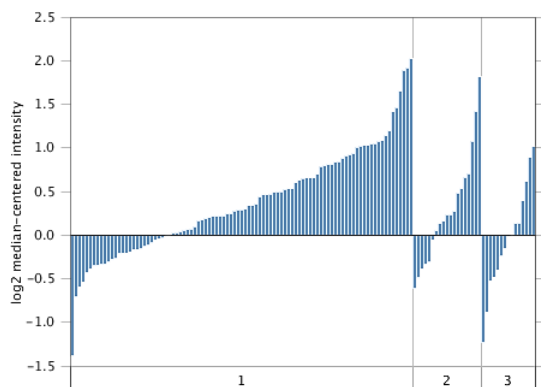
0. No value (28); 1. Ductal Breast Carcinoma in Situ (20); 2. Invasive Ductal Breast Carcinoma (18)

Bonnefoi



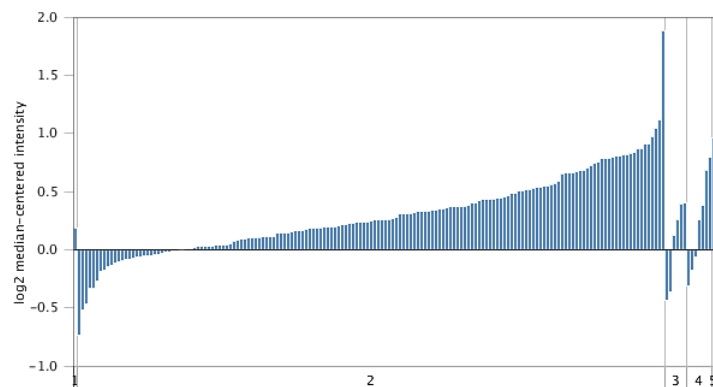
1. Breast Carcinoma (36); 2. Ductal Breast Carcinoma (112); 3. Invasive Breast Carcinoma (6); 4. Lobular Breast Carcinoma (6)

Lu



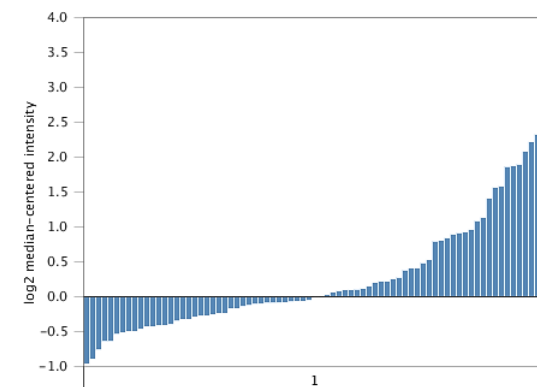
1. Ductal Breast Carcinoma (95); 2. Lobular Breast Carcinoma (19); 3. Mixed Lobular and Ductal Breast Carcinoma (15)

TCGA



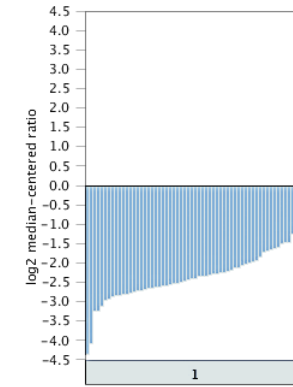
1. Invasive Breast Carcinoma (1); 2. Invasive Ductal Breast Carcinoma (163); 3. Invasive Ductal and Lobular Carcinoma (6); 4. Invasive Lobular Breast Carcinoma (7); 5. Mucinous Breast Carcinoma (1)

Loi



1. Invasive Breast Carcinoma (77)

TCGA



1. Breast (61)