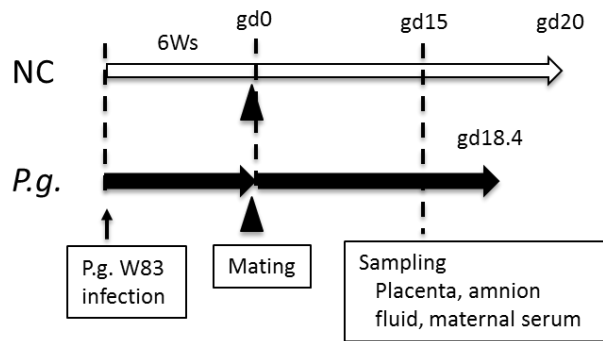


Galectin-3 Plays an Important Role in Preterm Birth Caused by Dental Infection of *Porphyromonas gingivalis*

Mutsumi Miyauchi^{1*}, Min Ao^{1,2*†}, Hisako Furusho^{1*}, Chanbora Chea¹, Atsuhiko Nagasaki¹, Shinnichi Sakamoto¹, Toshinori Ando¹, Toshihiro Inubushi^{1††}, Katsuyuki Kozai² and Takashi Takata¹

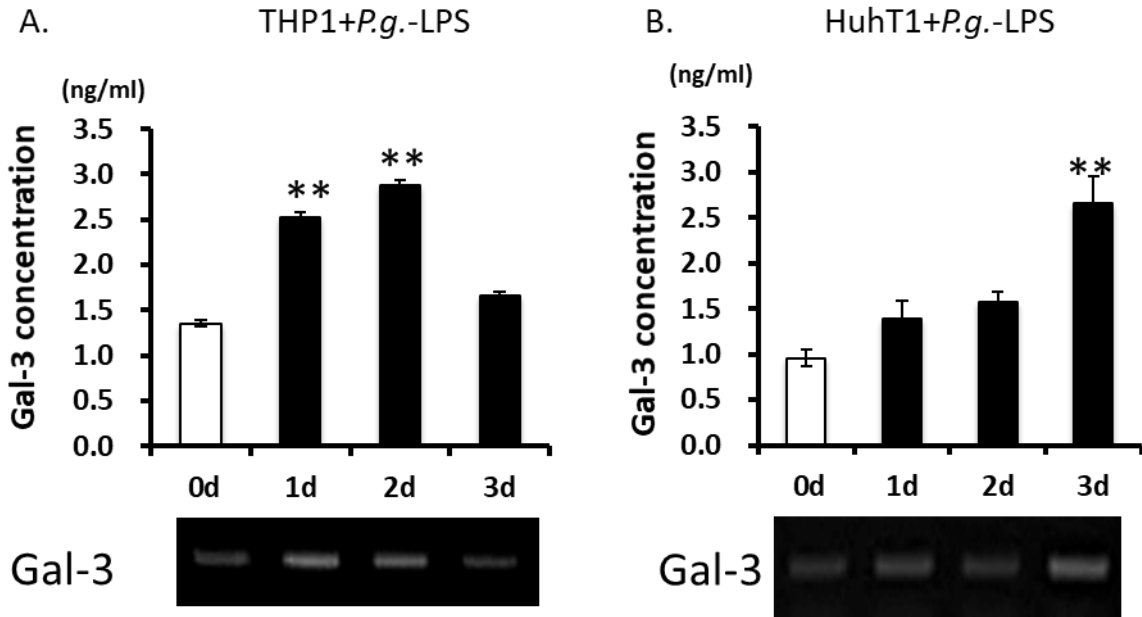
Supplemental Figure 1



Supplementary Figure 1

Gal-3 mRNA expression in macrophages and endothelial cells.

Gal-3 mRNA expression and production from macrophage (PMA stimulated THP-1) (A) and endothelial cell (HuhT1) (B) with *P.g.*-LPS (1 μ g/ml) stimulation. Data are presented as the mean \pm SD. ** $p < 0.01$; Student's t-test.



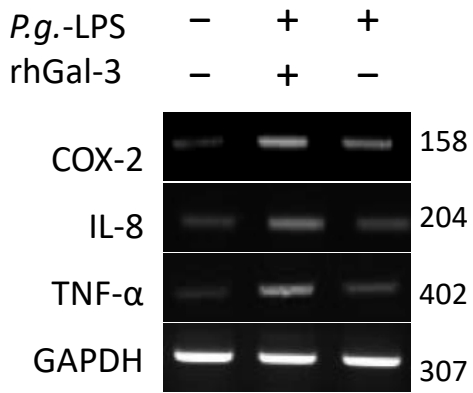
Supplementary Figure 2

Effects of costimulation of Gal-3 and various types of LPS.

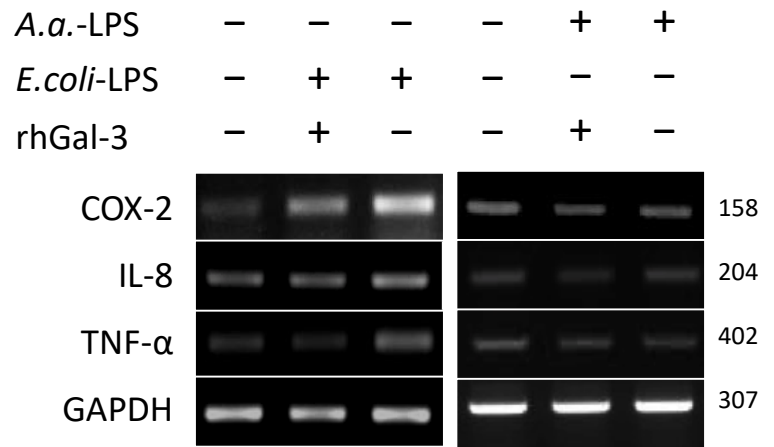
Trophoblasts (HTR-8 cells) were stimulated for 48 hours with LPS (100 ng/ml) from *P.g.* (A), *A.a.*, or *E. coli* (B) with or without rhGal-3 (0.5 µg/ml). COX-2, IL-8 and TNF-α mRNA expression was analysed by the PCR. Synergistically upregulated cytokine mRNA expression was seen by combination with *P.g.*-LPS and Gal-3. The combination with *A.a.* or *E. coli*-LPS showed reduced expression of them. GAPDH was used as an internal control.

Supplemental Figure 3

A



B



Supplementary Figure 3.

Experimental schedule to assess the effects of dental *P.g.* infection on placental tissues.