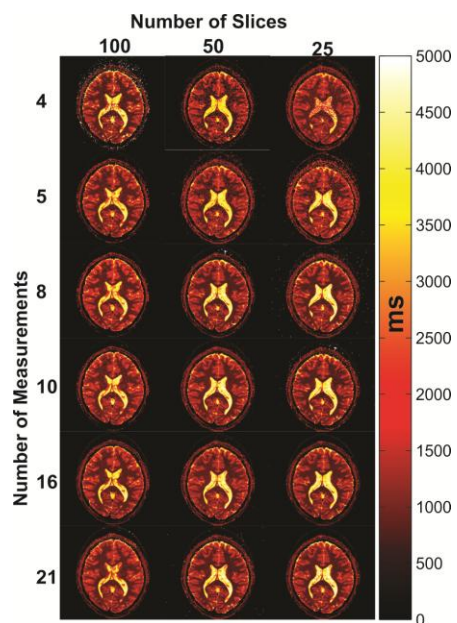
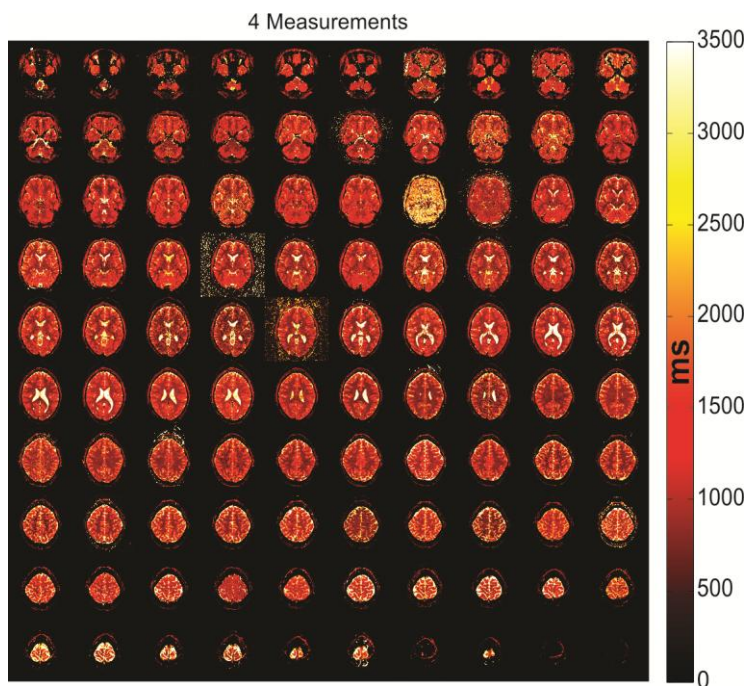


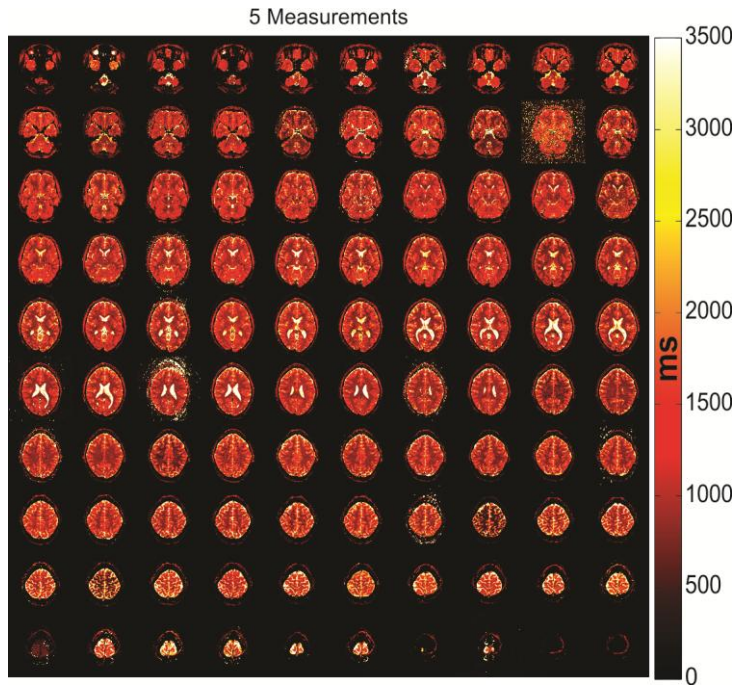
Supporting Figures



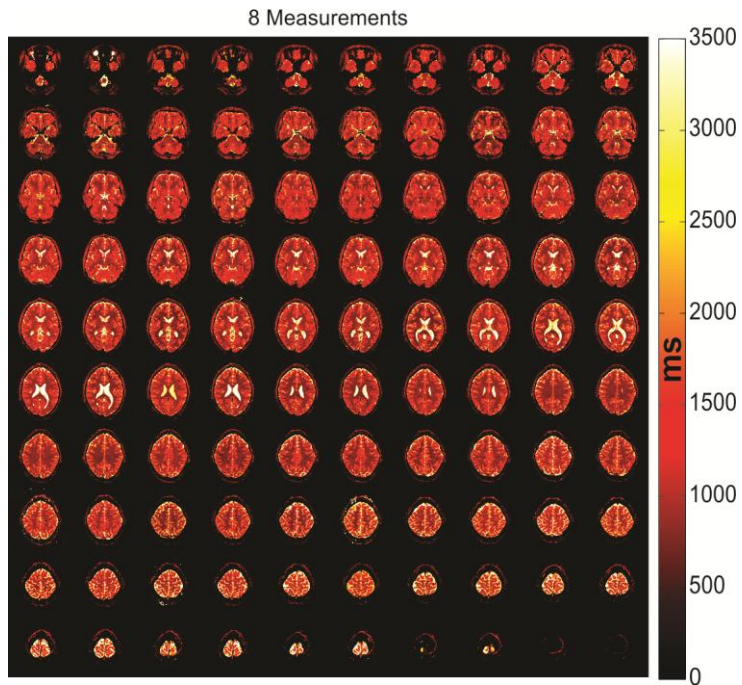
Supporting Fig. S1. Reconstructed T_1 maps for a representative slice for all measurements for the 100, 50 and 25 slices case.



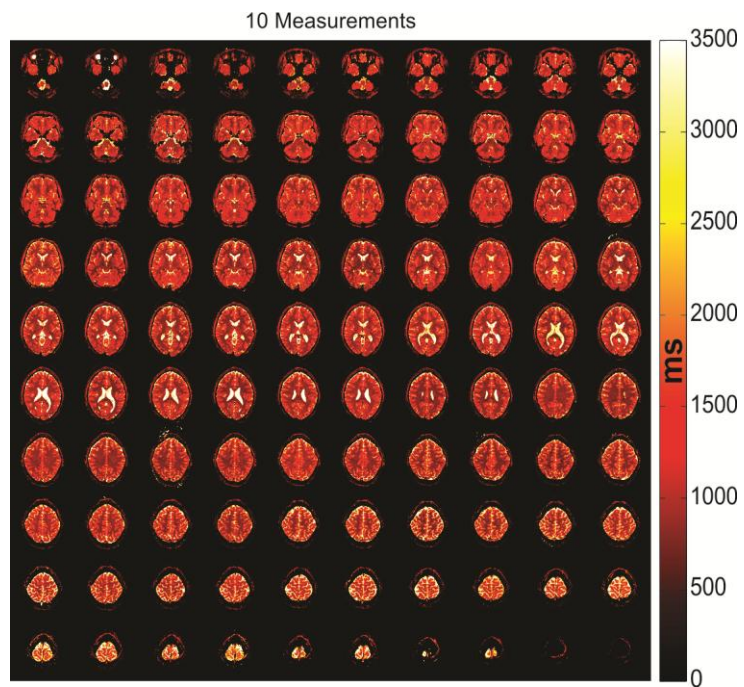
Supporting Fig. S2. Reconstructed T_1 maps of 100 slices acquired with the optimized 4-measurement protocol.



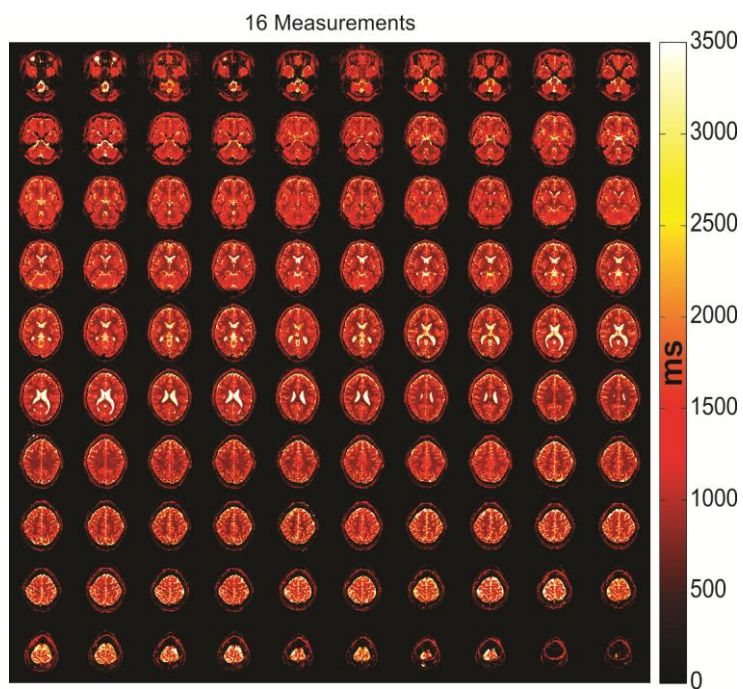
Supporting Fig. S3. Reconstructed T_1 maps of 100 slices acquired with the optimized 5-measurement protocol.



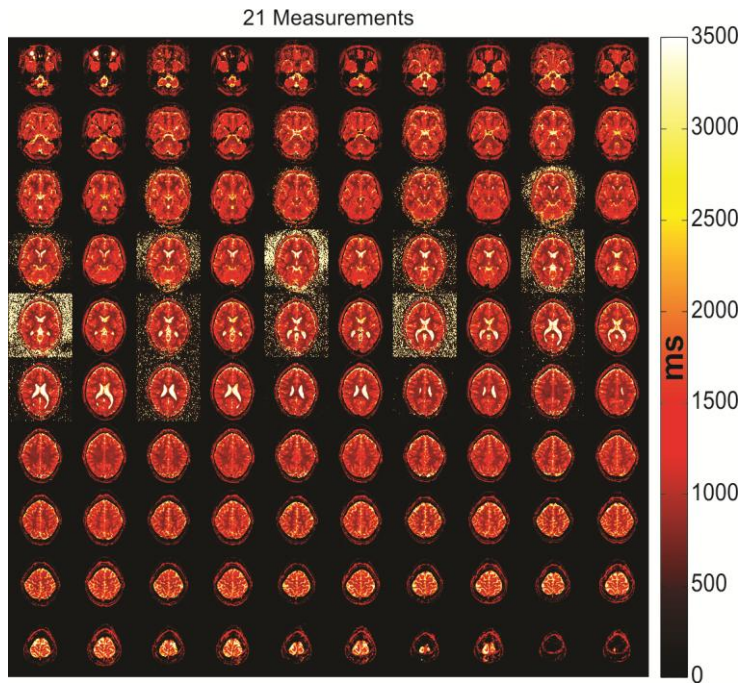
Supporting Fig. S4. Reconstructed T_1 maps of 100 slices acquired with the optimized 8-measurement protocol.



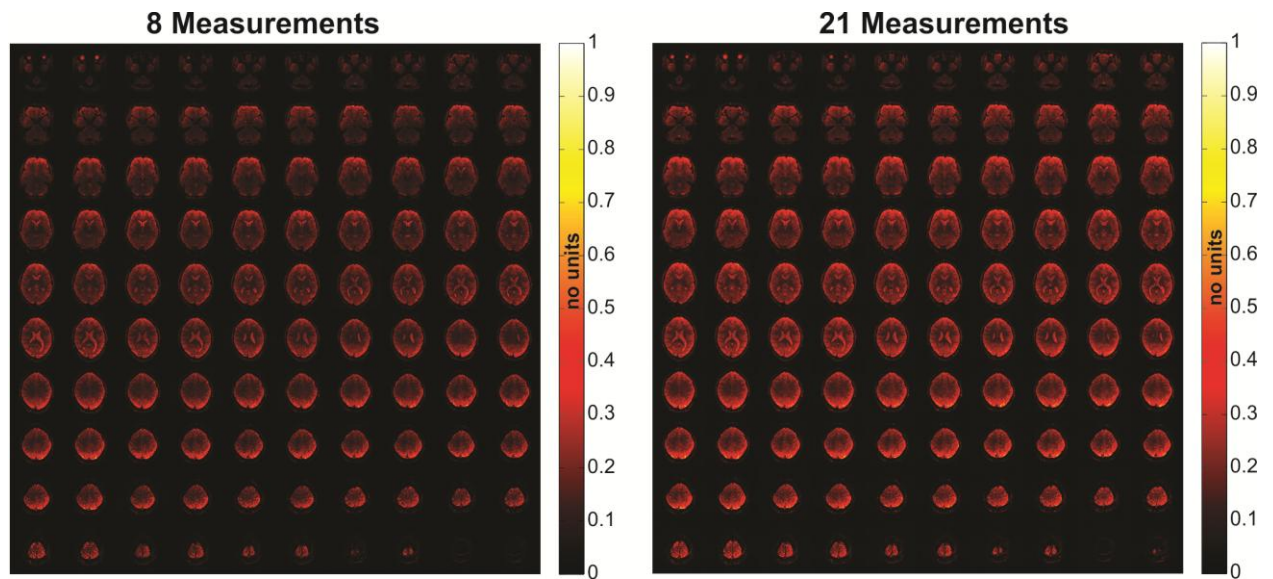
Supporting Fig. S5. Reconstructed T_1 maps of 100 slices acquired with the optimized 10-measurement protocol.



Supporting Fig. S6. Reconstructed T_1 maps of 100 slices acquired with the optimized 16-measurement protocol.



Supporting Fig. S7. Reconstructed T1 maps of 100 slices acquired with the unoptimized 21-measurement protocol.



Supporting Fig. S8. S_0 maps for the 8 measurements and 21 measurement protocols. Note the similarity between the maps obtained with the two measurements.

Supporting Table 1

Number of Measurements	Mean Range (ms)	Std Range (ms)
4	3676	1305
5	4392	1119
8	5250	874
10	5482	700
16	5875	512
21	5499	1219

Supporting Table 1: Summary of the TI values sampled as a function of the number of measurements for the 100-slice protocol. The range (max–min) of TI values was computed for each individual slice, the values reported here represent the mean and standard deviation of the range across all slices for each protocol.