

SUPPLEMENTARY MATERIAL

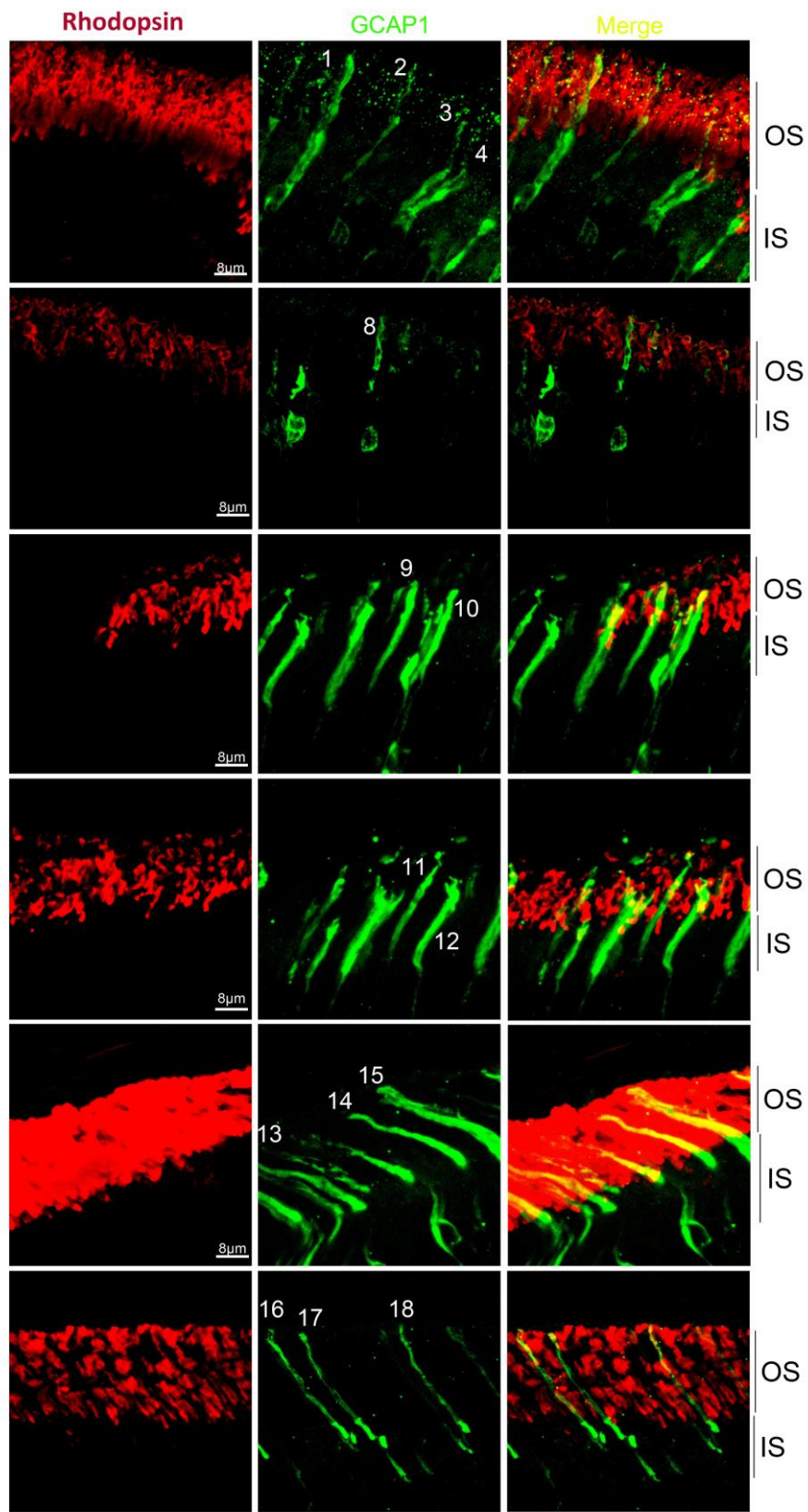
TITLE: Molecular determinants of Guanylate Cyclase Activating Protein subcellular distribution in photoreceptor cells of the retina.

Authors: Santiago López-Begines¹, Anna Plana-Bonamaisó², Ana Méndez^{1,2*}.

Affiliations: ¹Bellvitge Biomedical Research Institute (IDIBELL), Barcelona, Spain.
²Department of Physiology, University of Barcelona School of Medicine-Bellvitge Health Science Campus, Barcelona, Spain.

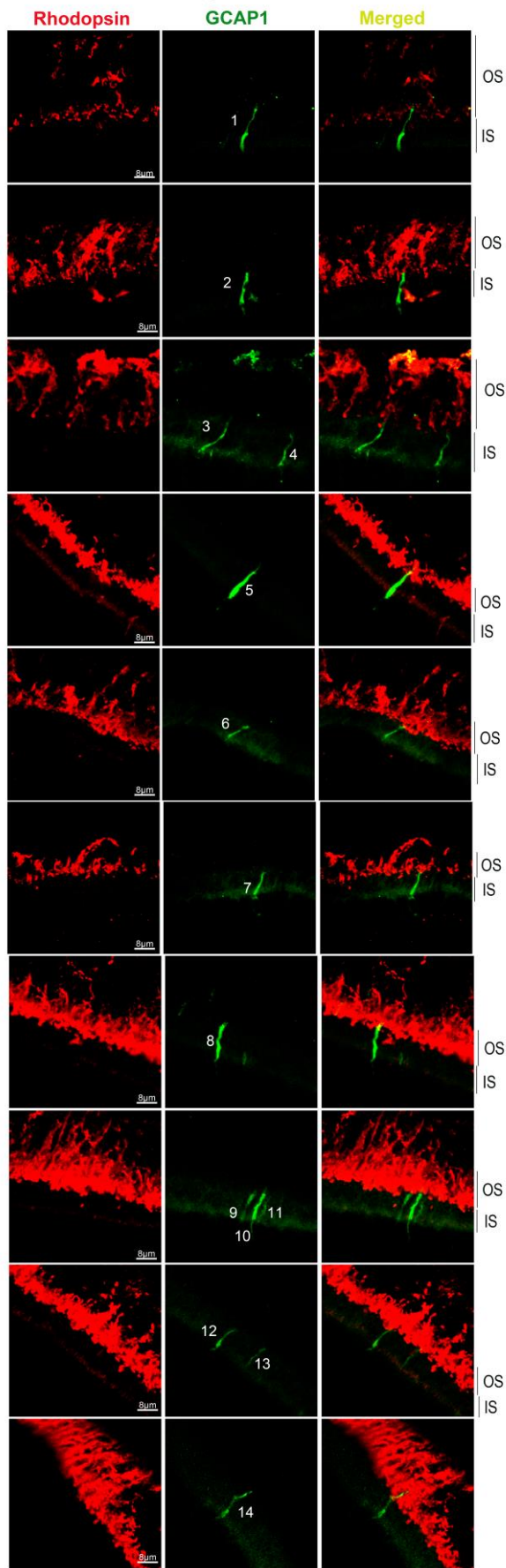
Supplementary Figure S1. Subcellular distribution of GCAP1 in individual rod photoreceptor cells of GCAP1/2 knockout mice transfected with the wildtype GCAP1 construct. Cells that were taken into account for determination of GCAP1 distribution to rod outer segments are numbered. The cells presented in Fig 1 of the main text of the article are not included here, and hence the discontinued numbering. OS: outer segment; IS: inner segment.

WT/GCAP1



Supplementary Figure S2. Subcellular distribution of K23D/GCAP1 in individual rod photoreceptor cells of GCAP1/2 knockout mice transfected with the K23D/GCAP1 construct. The cells that were taken into account for determination of GCAP1 distribution to rod outer segments are numbered. The cells presented in Fig 1 of the main text of the article are not included here, and hence the discontinued numbering. OS: outer segment; IS: inner segment.

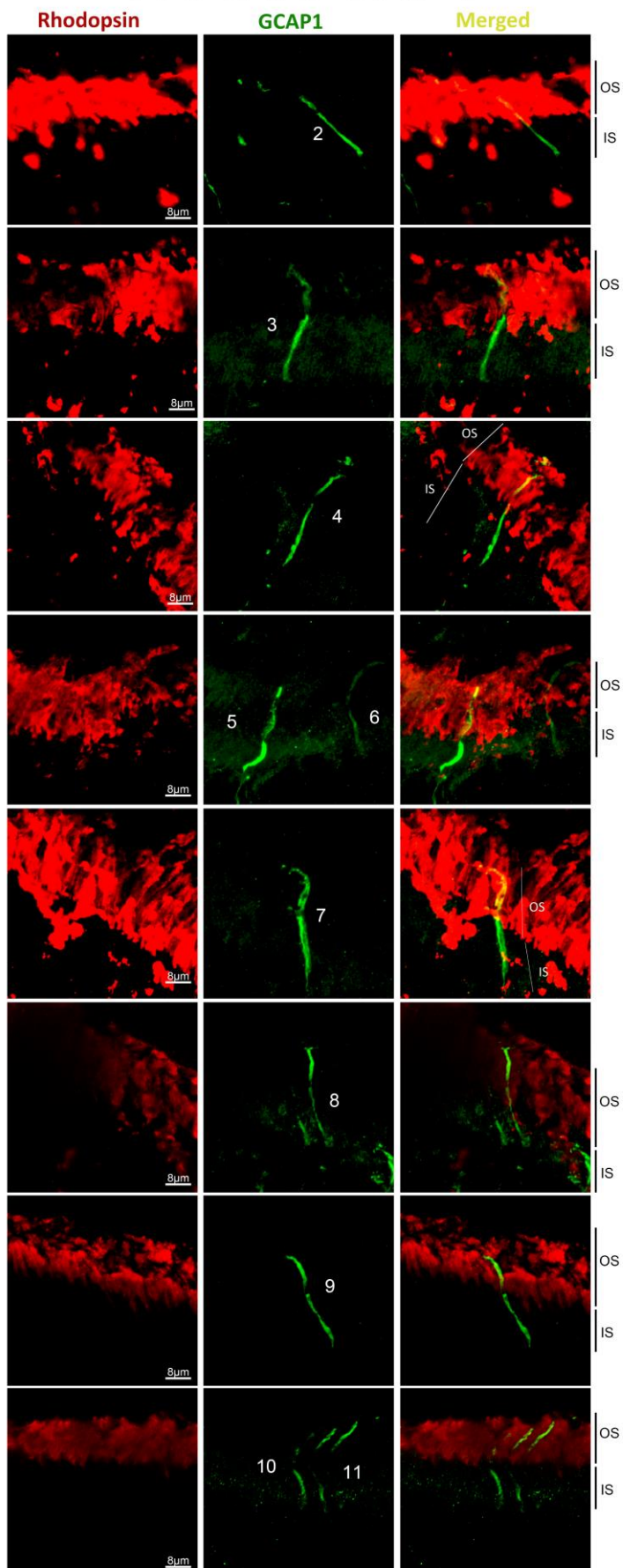
K23D/GCAP1



IS OS

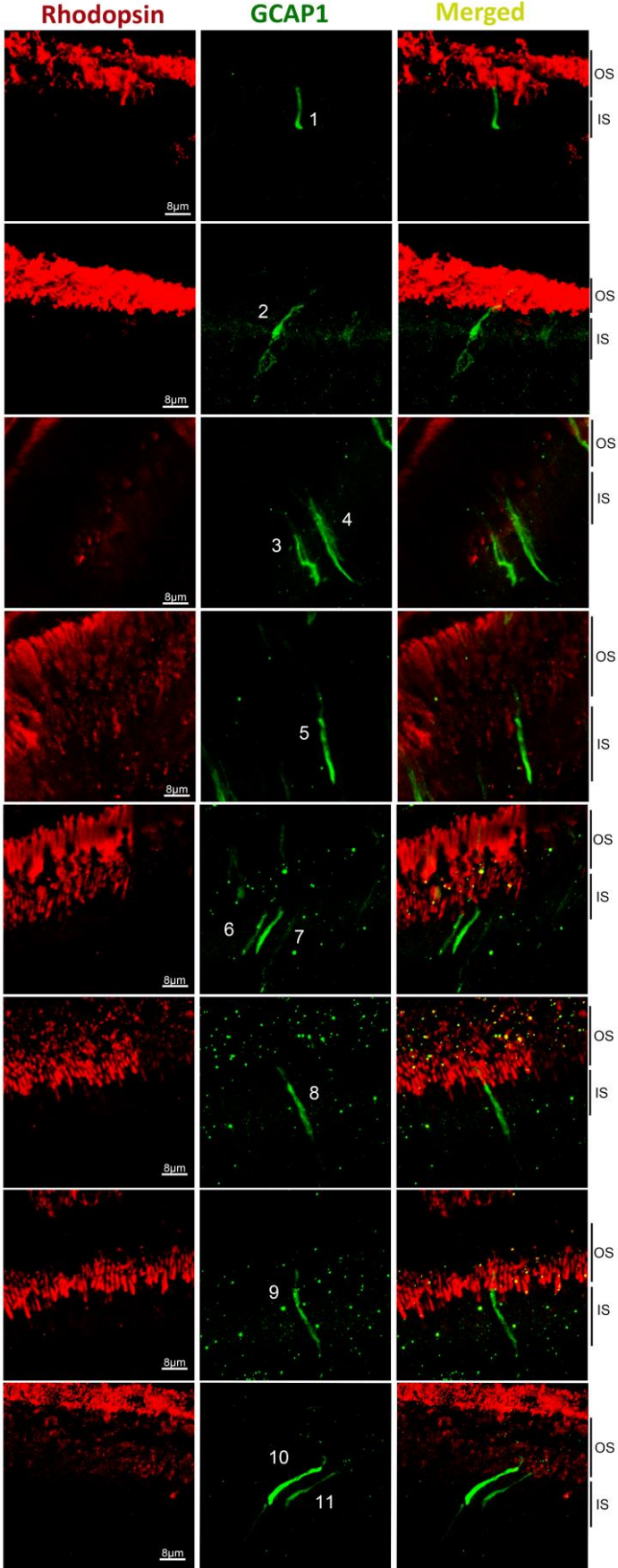
Supplementary Figure S3. Subcellular distribution of W94A/GCAP1 in individual rod photoreceptor cells of GCAP1/2 knockout mice transfected with the W94A/GCAP1 construct. Cells that were taken into account for determination of GCAP1 distribution to rod outer segments are numbered. The cells presented in Fig 1 of the main text of the article are not included here, and hence the discontinued numbering. OS: outer segment; IS: inner segment.

W94A/GCAP1



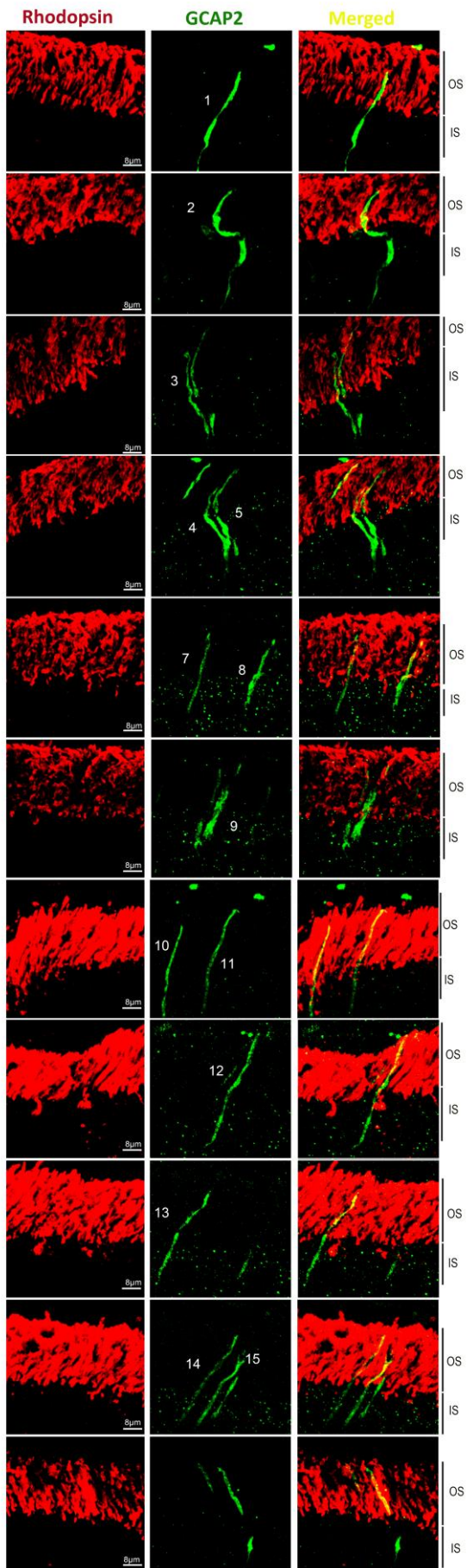
Supplementary Figure S4. Subcellular distribution of G2A/GCAP1 in individual rod photoreceptor cells of GCAP1/2 knockout mice transfected with the G2A/GCAP1 construct. The cells that were taken into account for determination of GCAP1 distribution to rod outer segments are numbered. The cells presented in Fig 1 of the main text of the article are not included here, and hence the discontinued numbering. OS: outer segment; IS: inner segment.

G2A/GCAP1



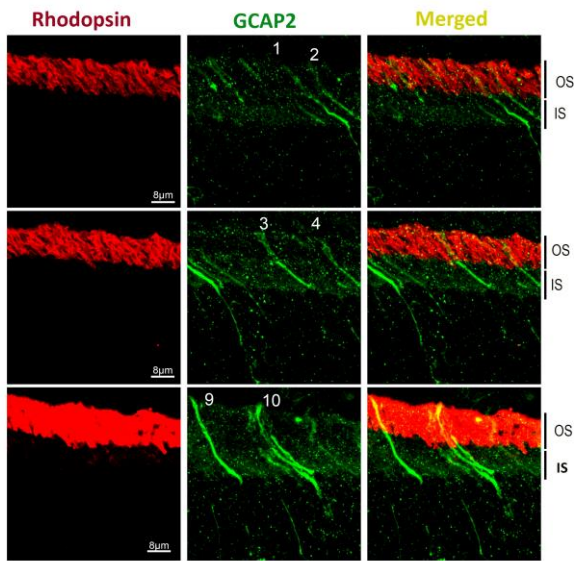
Supplementary Figure S5. Subcellular distribution of GCAP2 in individual rod photoreceptor cells of GCAP1/2 knockout mice transfected with wildtype GCAP2. Cells that were taken into account for determination of GCAP2 distribution to rod outer segments are numbered. The cells that are presented in Fig 2 of the main text of the article are not included here, and hence the discontinued numbering. OS: outer segment; IS: inner segment.

WT/GCAP2

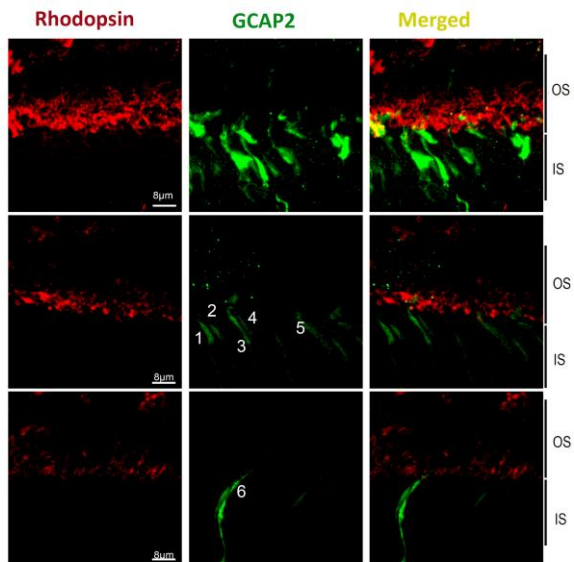


Supplementary Figure S6. Subcellular distribution of GCAP2 in individual rod photoreceptor cells of GCAP1/2 knockout mice transfected with constructs G2A/GCAP2; S201D/GCAP2; or S201G/GCAP2. Cells that were taken into account for determination of GCAP2 distribution to rod outer segments are numbered. The cells that are presented in Fig 2 of the main text of the article are not included here, and hence the discontinued numbering. OS: outer segment; IS: inner segment.

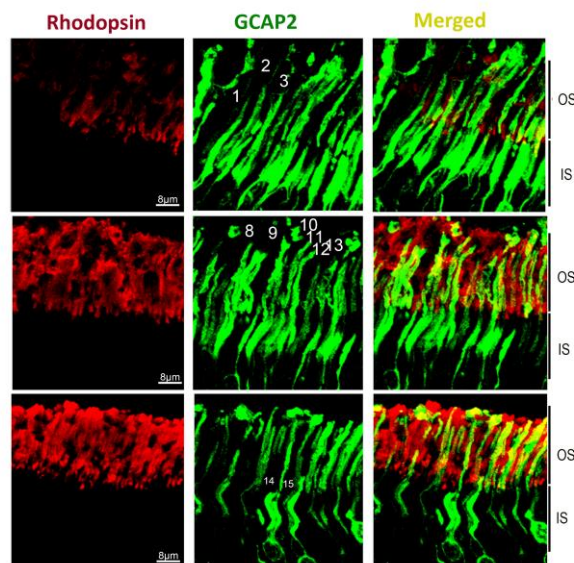
G2A/GCAP2



S201D/GCAP2

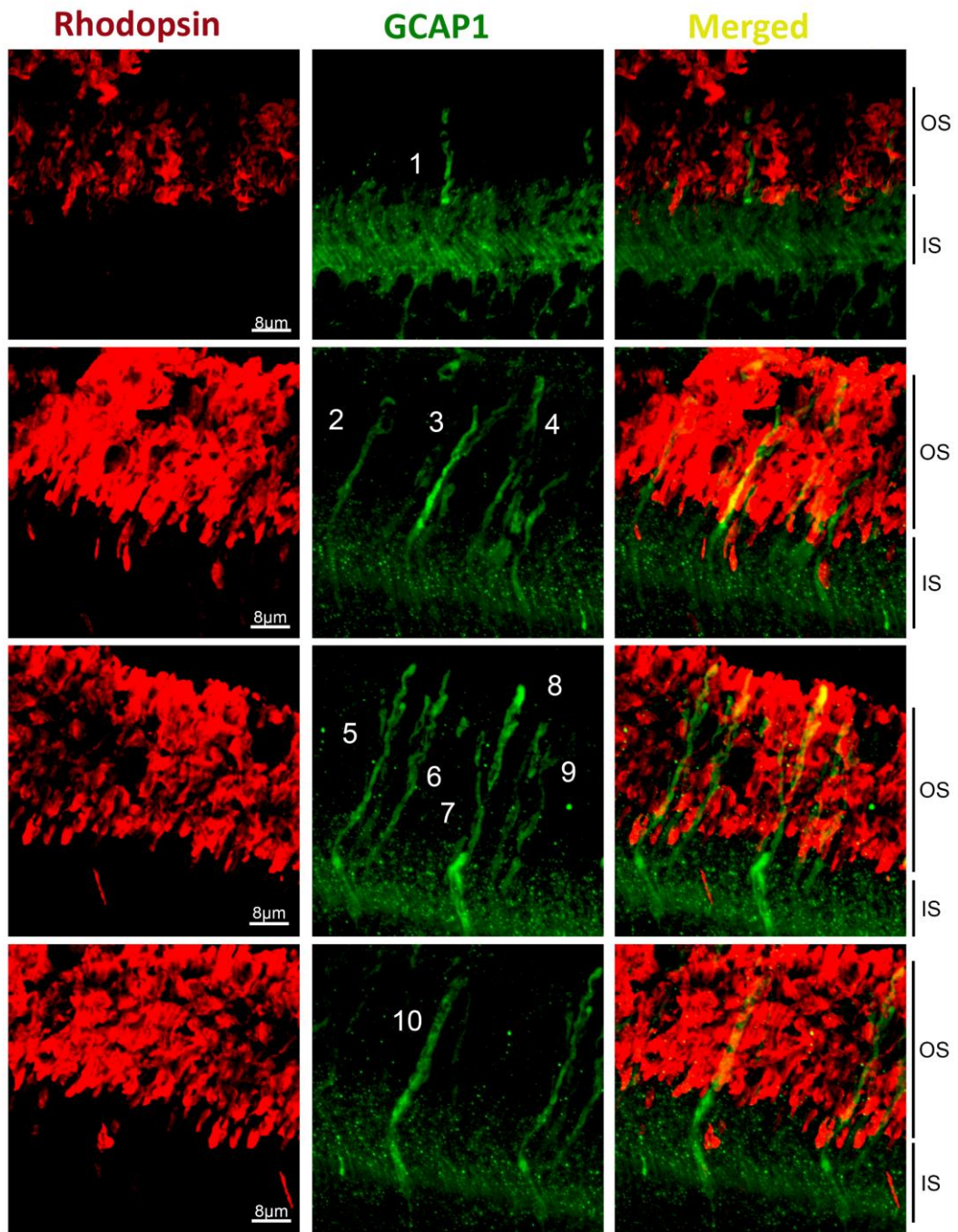


S201G/GCAP2



Supplementary Figure S7. Subcellular distribution of GCAP1 in individual rod photoreceptor cells of GCAP1/2 knockout mice transfected with P50L/GCAP1 construct. The cells that were taken into account for determination of GCAP1 distribution to rod outer segments are numbered. The cells that are presented in Fig 3 of the main text of the article are not included here, and hence the discontinued numbering. OS: outer segment; IS: inner segment.

P50L/GCAP1



Supplementary Figure S8. Subcellular distribution of GCAP2 in individual rod photoreceptor cells of GCAP1/2 knockout mice transfected with bG161R/GCAP2. The cells that were taken into account for determination of GCAP2 distribution to rod outer segments are numbered. The cells that are presented in Fig 4 of the main text of the article are not included here, and hence the discontinued numbering. OS: outer segment; IS: inner segment.

G161R/GCAP2

