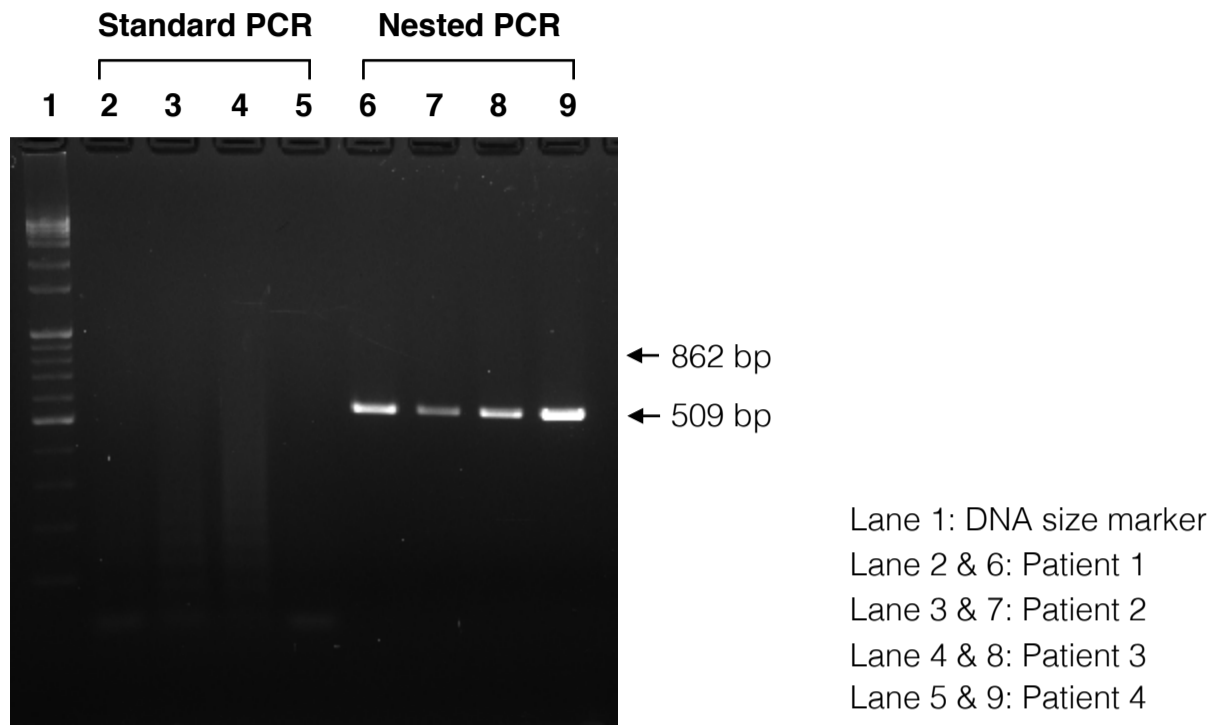


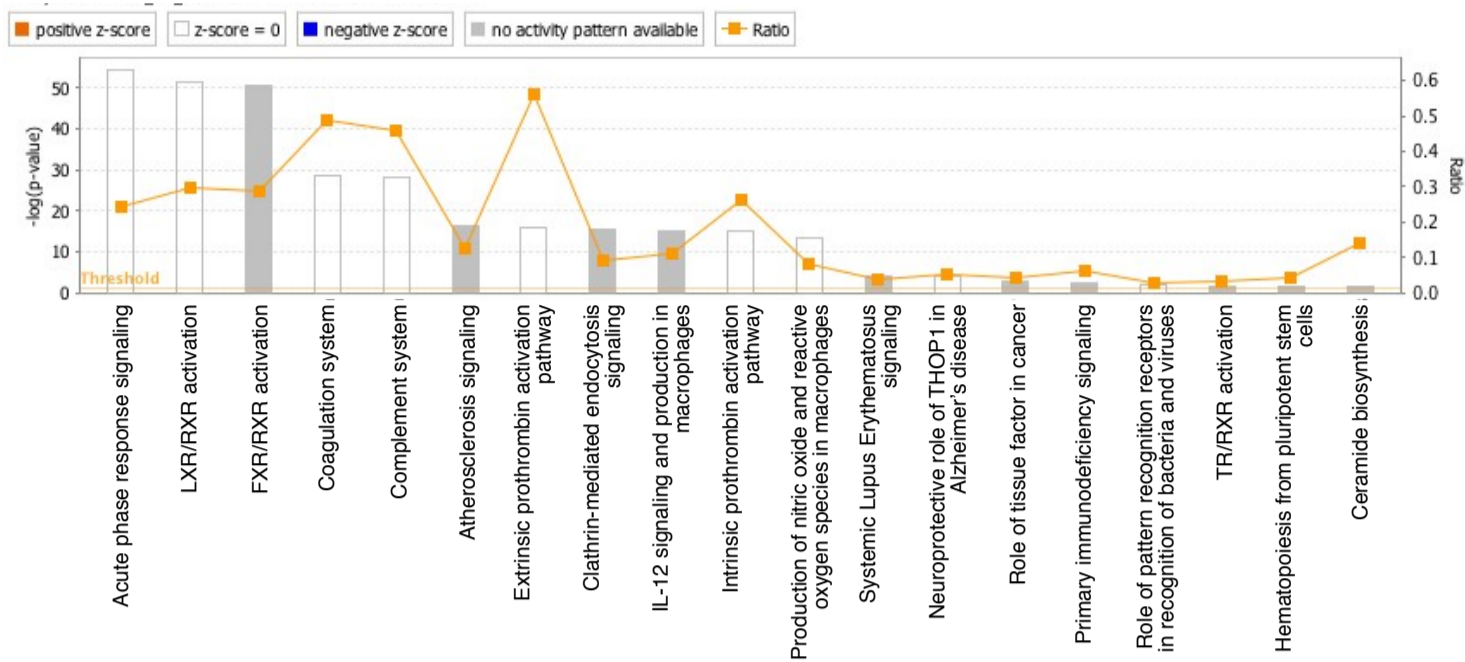
## Additional file 1: Fig. S1



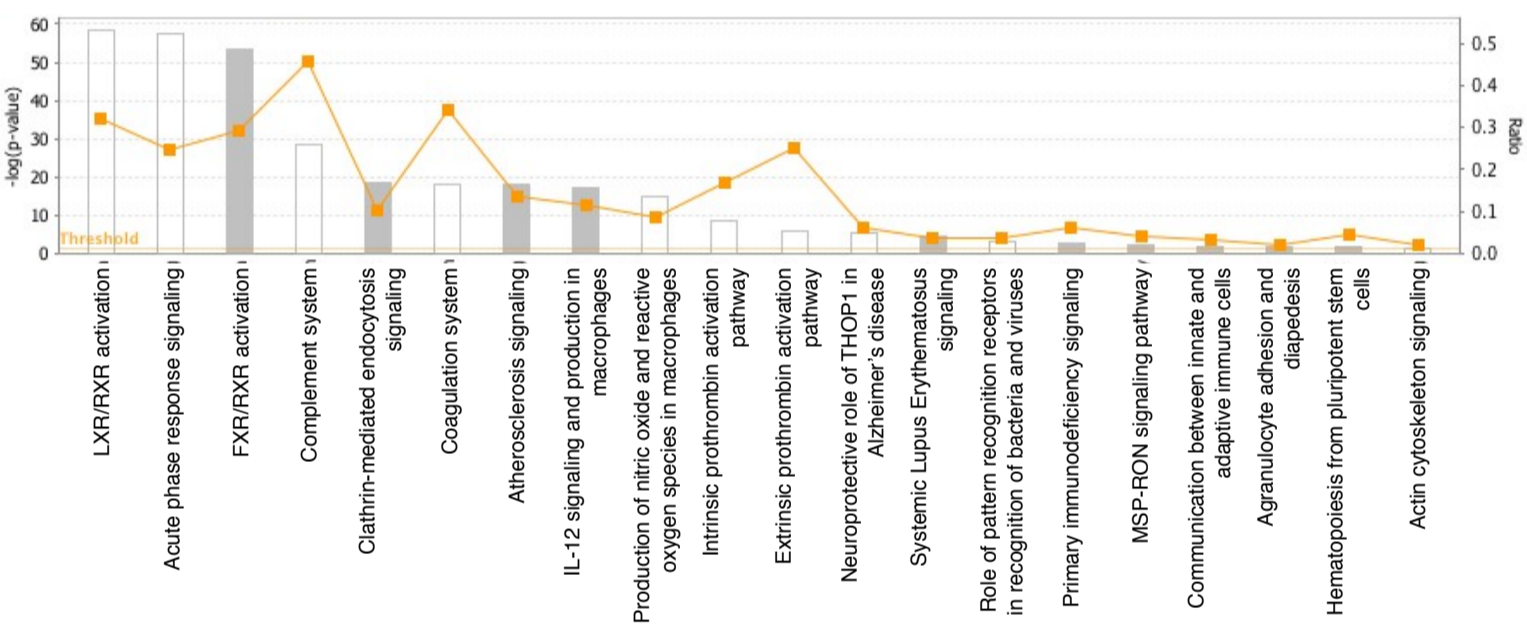
**Figure S1.** Nested PCR of 56 kDa gene confirmed the infection of *O. tsutsugamushi* in scrub typhus patients. Clinical samples of patient 1, 2, and 4 were used for proteomic analysis.

# Additional file 1: Fig. S2

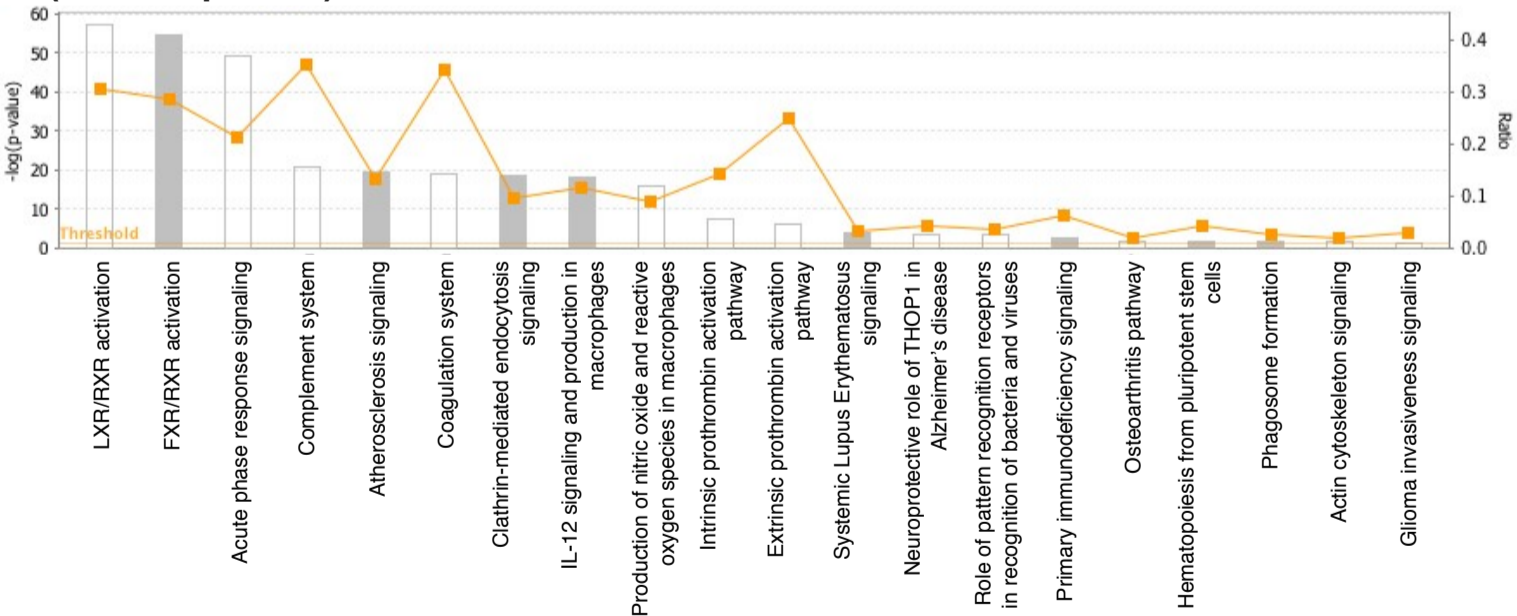
## A (Normal subjects)



## B (Naive patient)



## C (Treated patient)



**Figure S2.** Functional annotation of the proteins identified in normal subjects (A), naive scrub typhus patients (B), and treated patients (C).