

FIG S1 Zeta potential values of LMG 18311 and mutants at pH 2, 3, 5, 7 and 9.

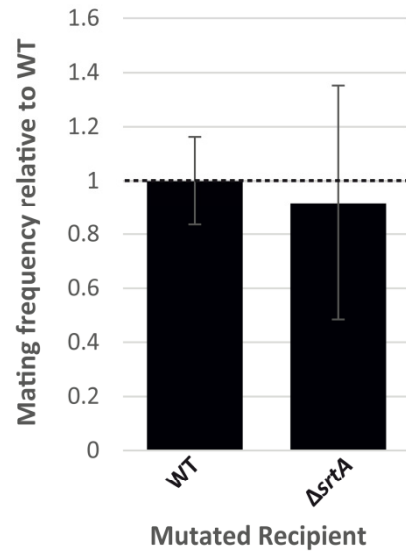


FIG S2 Conjugative transfer of *ICES_{St3}* using recipient cells mutated in sortase A gene. Conjugation frequency value of LMD-9 $\Delta srtA$ relative to WT (LMD-9(pMG36e)). Means and standard deviation result from at least 3 biological repetitions.

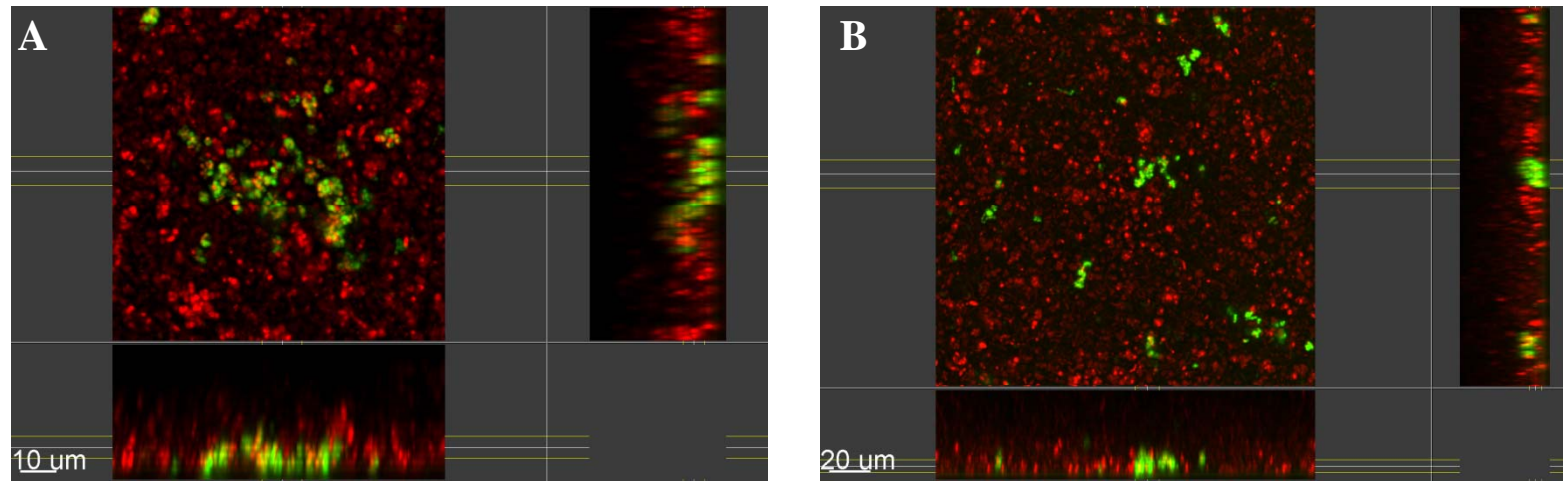


FIG S3 Co-aggregation of the mutated recipient cells ($\Delta tagO$ -like) with the WT donor cells
Analysis of the co-aggregation of the mutated recipient cells ($\Delta tagO$ -like) with the WT donor cells (panel A) by laser scanning confocal microscopy. Control (panel B) shows the mix between WT donor and recipient cells.
Cells carrying *gfp*-labeled ICES*t3* appear as green fluorescent cells. Cells were counterlabeled using the syto61 red fluorescent nucleic acid stain.