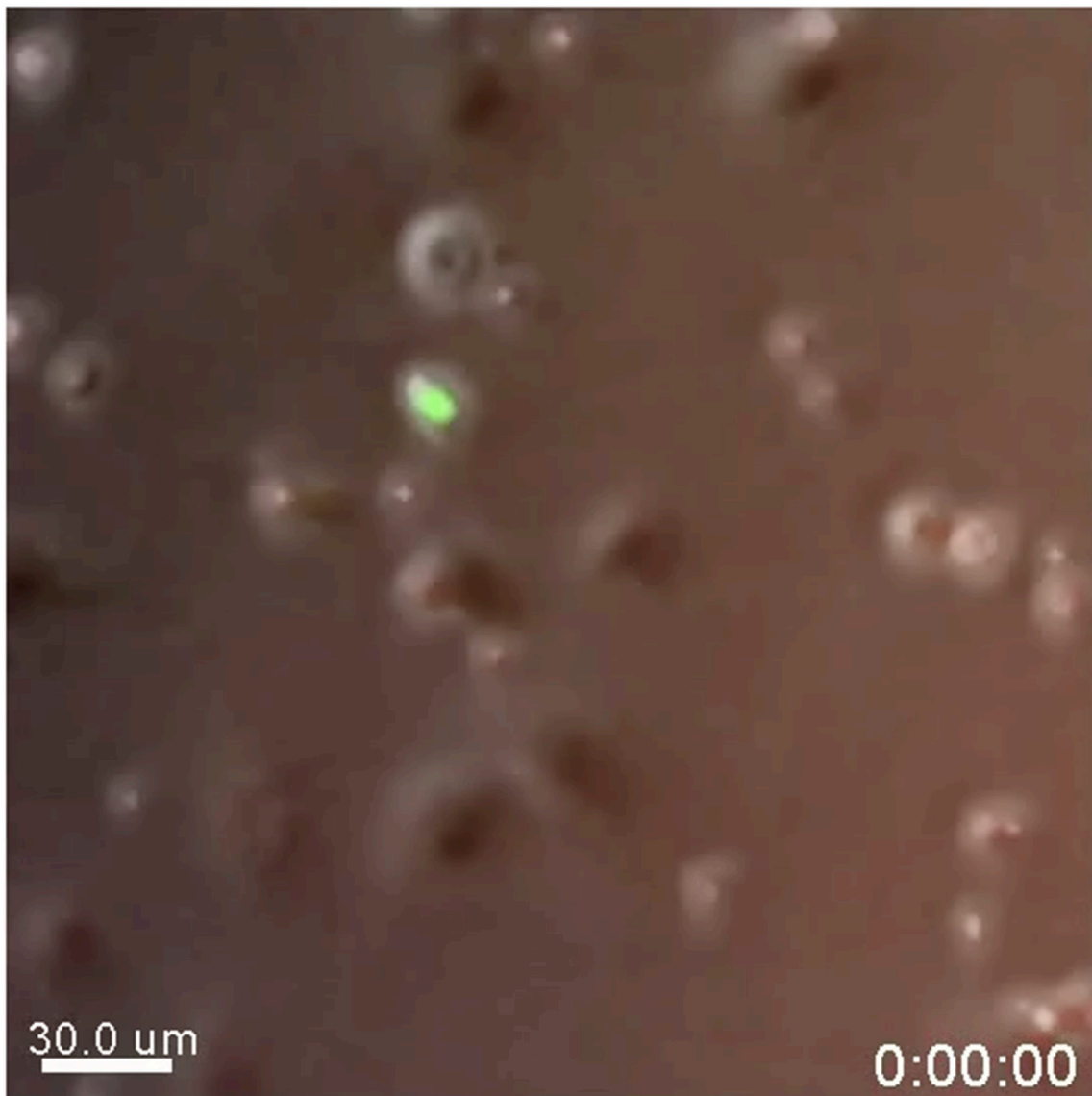


Human papillomavirus E7 oncoprotein expression by keratinocytes alters the cytotoxic mechanisms used by CD8 T cells

SUPPLEMENTARY MATERIALS



Supplementary Video 1: EGFP⁺CD8⁺ T cells kill KC targets loaded with cognate peptide. Example of extended-duration microscopy of KC (larger unstained cells) and EGFP⁺ effector T cells. Imaging is over 30 hours. The highly motile T cell (green) makes contact with KC targets within 30 min and remains attached for around 5 hours before detaching and moving away. The target cells die after contact several hours later becoming positive for caspase-3 at around 16 hours as indicated by intracellular increase in concentration of indicator dye (red). The T cell also subsequently dies, becoming red. Several other caspase-3 positive and negative KC are visible in the field of view.

See Supplementary Video 1