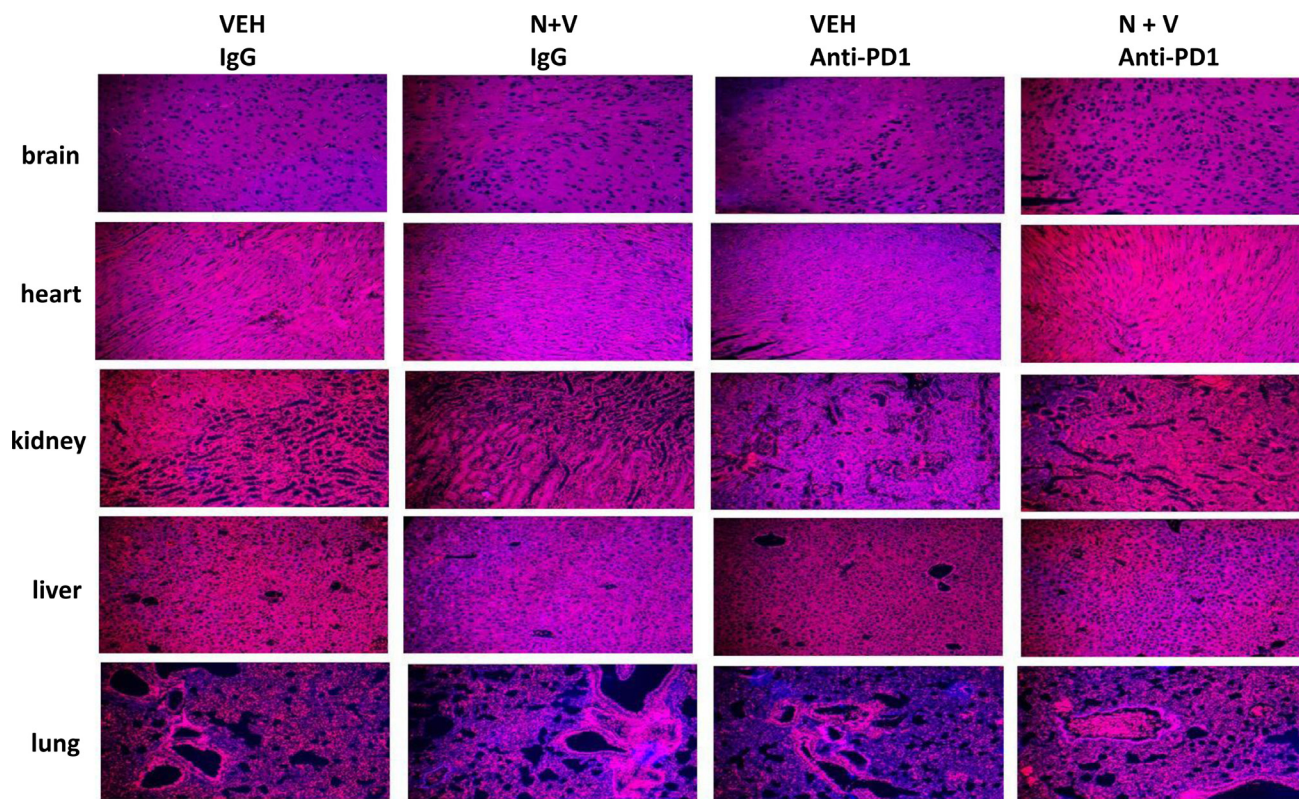
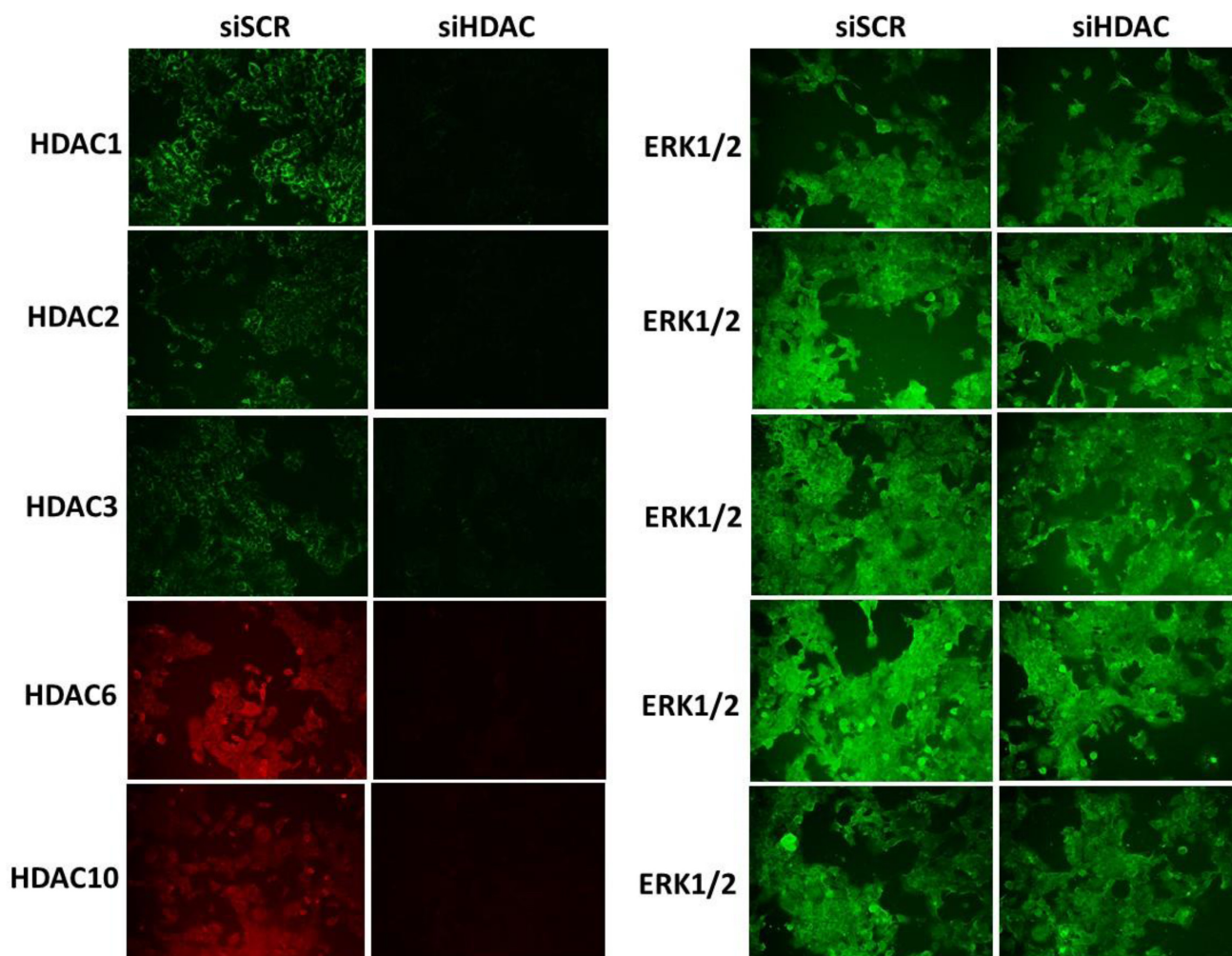


## [Neratinib + Valproate] exposure permanently reduces ERBB1 and RAS expression in 4T1 mammary tumors and enhances M1 macrophage infiltration

### SUPPLEMENTARY MATERIALS



**Supplementary Figure 1: Prior [neratinib + valproate] exposure does not cause frank obvious normal tissue damage in BALB/c mice at Day 16.** A. BALB/c mice carrying 4T1 tumors were humanely sacrificed on Day 16. Organs were harvested from the mice and fixed, paraffin embedded and sectioned (5  $\mu$ m). Sections were renatured, blocked and H&E performed to determine the tissue morphology of each of the normal tissues examined. Images were taken at 10 $\times$  magnification.



Supplementary Figure 2: Control IF images showing knock down of HDAC proteins in 4T1 cells.