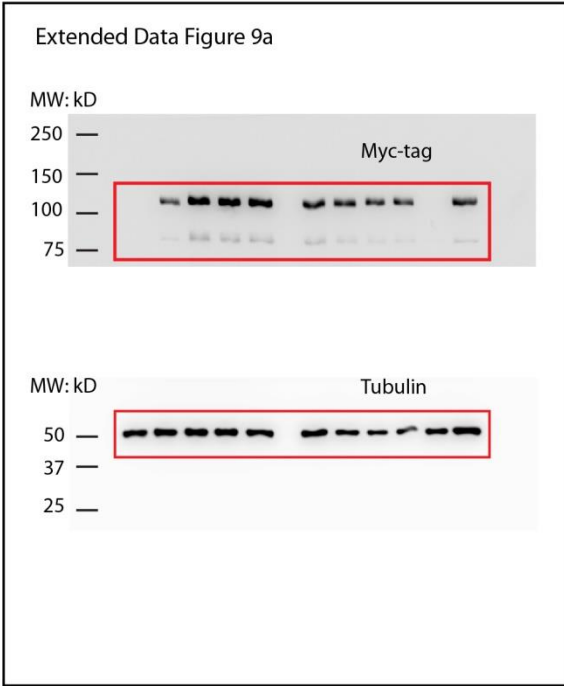
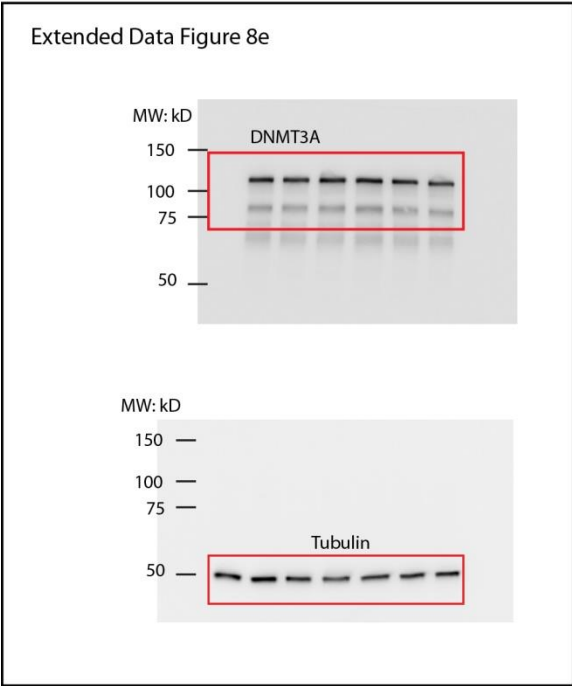
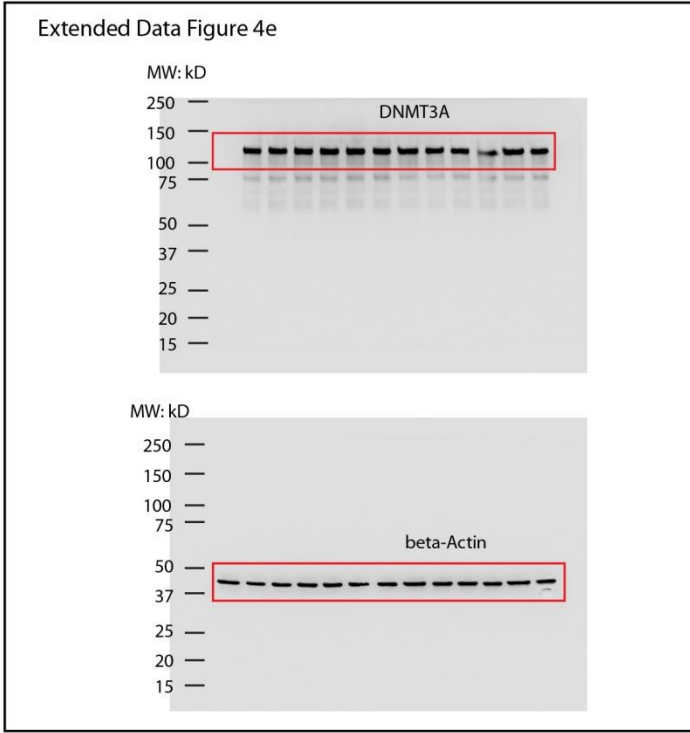
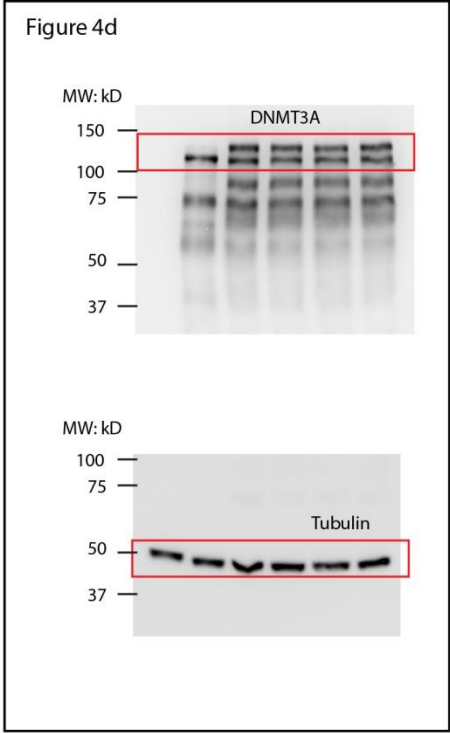


Supplementary Figure

Structural basis for DNMT3A-mediated *de novo* DNA methylation

Zhi-Min Zhang, Rui Lu, Pengcheng Wang, Yang Yu, Dong-Liang Chen, Linfeng Gao, Shuo Liu, Debin Ji, Scott B Rothbart, Yinsheng Wang, Gang Greg Wang, Jikui Song

Supplementary Figure 1.



Supplementary Figure 1. Uncropped images for western blots in the main figures and supplementary figures. This file contains full uncropped scans of Western blots showing molecular-weight markers presented in Figure 4d and Extended Data Figures 4e, 8e and 9a. Shown are representative blots of two independent experiments with similar results.