

Supplementary Online Content

Irizarry OC, Levine LD, Lewey J, et al. Comparison of clinical characteristics and outcomes of peripartum cardiomyopathy between African American and non–African American women. *JAMA Cardiol*. Published online October 11, 2017. doi:10.1001/jamacardio.2017.3574

eFigure 1. Inclusion Flowchart

eFigure 2. PPCM End Points

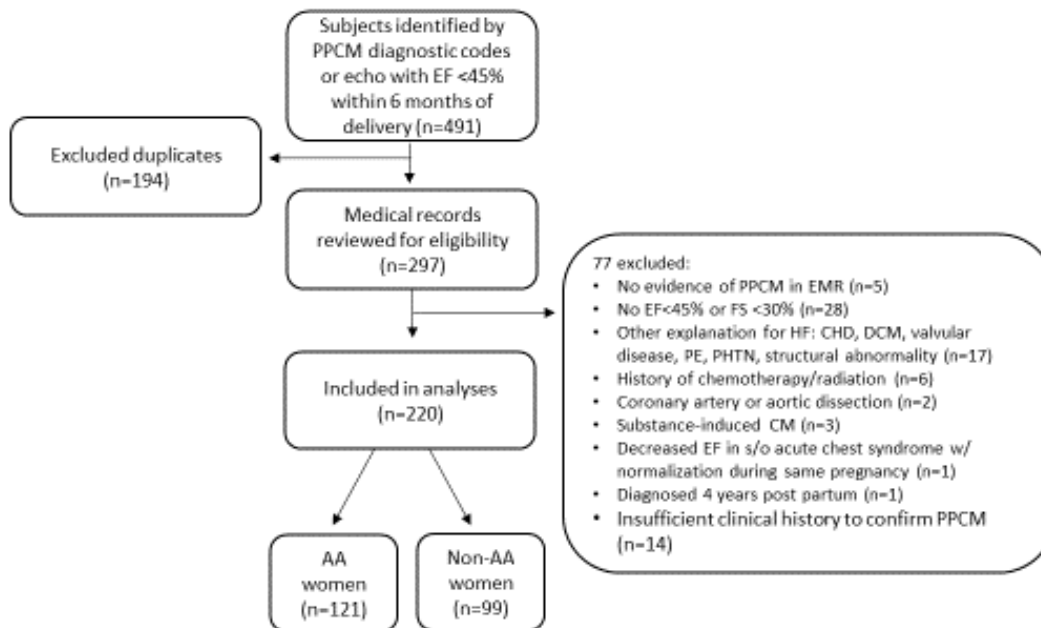
eTable 1. Incidence of Arrhythmias

eTable 2. Presenting Demographic and Clinical Characteristics and Clinical Outcomes in Subset of Women for Whom All Data Are Available (n = 113)

eTable 3. Presenting Demographic and Clinical Characteristics and Clinical Outcomes in the Contemporary Subset of Women Presenting on or After the Year 2000 (n = 190)

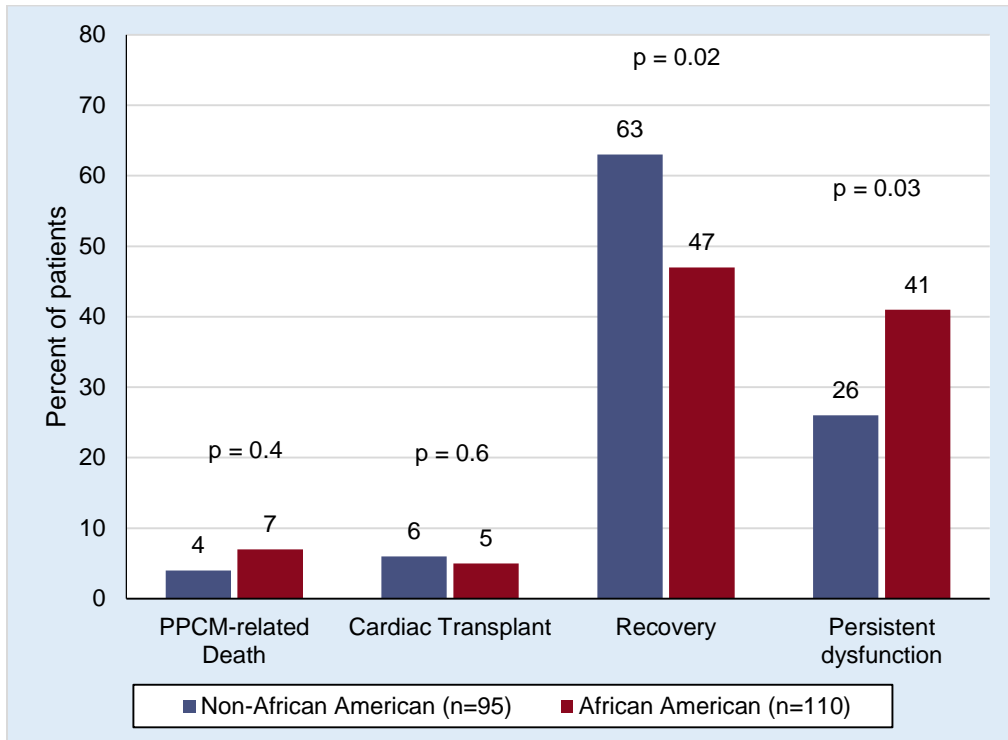
This supplementary material has been provided by the authors to give readers additional information about their work.

eFigure 1. Inclusion Flowchart



EF= ejection fraction, FS=fractional shortening, HF=heart failure, CHD=congenital heart disease, PE=pulmonary embolism, PHTN=pulmonary hypertension, EMR=electronic medical record, CM=cardiomyopathy. P-values correspond to racial comparison.

eFigure 2. PPCM End Points



Percent of patients noted to have each of four mutually exclusive PPCM end points are shown, stratified by race.

eTable 1. Incidence of Arrhythmias

	Non-AA (n=99)	AA (n=121)	P
Arrhythmia	31	26	0.098
Supraventricular arrhythmias	9	10	0.45
Ventricular arrhythmias	17	13	0.716
Brady-arrhythmias	4	2	0.523
Unknown	1	1	-

eTable 2. Presenting Demographic and Clinical Characteristics and Clinical Outcomes in Subset of Women for Whom All Data Are Available (n = 113)

<i>Parameter</i>	<i>Overall PPCM (n=113)</i>	<i>African American (n=57)</i>	<i>Non-African American (n=56)</i>	<i>p</i>
Mean age, years	30.6 ± 7.0	29.1 ± 7.5	32.2 ± 6.2	0.02 ^b
Age > 30y, no. (%)	60 (53%)	24 (42%)	36 (64%)	0.02
Time of diagnosis,				
Antepartum, no. (%)	13 (12%)	7 (12%)	6 (11%)	0.8
Postpartum, no. (%)	100 (89%)	50 (88%)	50 (89%)	0.8
Chronic hypertension, no. (%)	9 (8%)	8 (14%)	1 (2%)	0.02
Pregnancy-related hypertension, no. (%)	48 (42%)	26 (46%)	22 (39%)	0.5
Parity prior to PPCM diagnosis, no. (%)				
Nulliparous	60 (53%)	24 (42%)	36 (64%)	0.02
Multiparous	53 (46%)	32 (56%)	20 (36%)	0.03
Unknown	1 (1%)	1 (2%)	0 (0%)	0.3
Twin pregnancy, no. (%)	17 (15%)	5 (9%)	12 (21%)	0.06
Cesarean delivery, no. (%)	68 (60%)	27 (47%)	41 (73%)	0.005
Presenting EF, mean ± SD	28 ± 13	26 ± 13	30 ± 12	0.055 ^c
Presenting EF <30%, no. (%)	56 (50%)	34 (60%)	22 (39%)	0.03
Follow-up EF, mean ± SD	39 ± 14	36 ± 14	42 ± 13	0.03 ^d
Worst EF, mean ± SD	26 ± 12	23 ± 13	29 ± 12	0.02 ^e
Worsen after diagnosis, no. (%)	37 (32%)	23 (40%)	14 (25%)	0.08
Documentation EF>50, no. (%)	78 (69%)	34 (60%)	44 (79%)	0.03
Time to EF>50, median days (Q ₁ , Q ₃) ^a	129 (52, 303)	240.5 (75, 696.5)	105 (52, 248)	0.056

a: n=61; 20 AA; 41 non-AA

b: Cohen's *d*=0.45

c: Cohen's *d*=0.32

d: Cohen's *d*=0.44

e: Cohen's *d*=0.48

P-values correspond to racial comparison.

eTable 3. Presenting Demographic and Clinical Characteristics and Clinical Outcomes in the Contemporary Subset of Women Presenting on or After the Year 2000 (n = 190)

<i>Parameter</i>	<i>Overall PPCM (n=190)</i>	<i>African American (n=106)</i>	<i>Non-African American (n=84)</i>	<i>p</i>
Mean age, years	29.4 ± 6.7	27.6±6.5	31.8±6.2	<0.001 ⁱ
Age > 30y, no. (%)	82 (43%)	31 (30%)	51 (61%)	<0.001
Time of diagnosis, (n=185)				
Antepartum, no. (%)	16 (8%)	9 (9%)	7 (9%)	0.96
Postpartum, no. (%)	169 (91%)	94 (91%)	75 (91%)	0.96
Chronic hypertension, no. (%) ^a	15 (10%)	14 (17%)	1 (1%)	0.002
Pregnancy-related hypertension, no. (%) ^b	73 (46%)	44 (51%)	29 (40%)	0.2
Parity prior to PPCM diagnosis, no. (%)				
Nulliparous	92 (48%)	44 (42%)	48 (57%)	0.03
Multiparous	92 (48%)	58 (55%)	34 (40%)	0.05
Unknown	6 (3%)	4 (4%)	2 (2%)	0.6
Twin pregnancy, no. (%) ^c	23 (12%)	8 (8%)	15 (18%)	0.03
Cesarean delivery, no. (%) ^d	103 (56%)	49 (49%)	54 (66%)	0.02
Presenting EF, mean ± SD ^e	29 ± 13	27 ± 13	31 ± 12	0.07 ^j
Presenting EF <30%, no. (%) ^e	75 (48%)	47 (57%)	28 (39%)	0.03
Follow-up EF, mean ± SD ^f	39 ± 14	36 ± 15	42 ± 14	0.02 ^k
Worst EF, mean ± SD ^g	27 ± 13	25 ± 13	29 ± 12	0.03 ^l
Worsen after diagnosis, no. (%) ^g	43 (28%)	29 (35%)	14 (19%)	0.03
Documentation EF>50, no. (%)	124 (65%)	62 (58%)	62 (74%)	0.03
Time to EF>50, median days (Q ₁ , Q ₃) ^h	170 (67, 355)	265 (89, 552)	129 (52, 291)	0.02

a: n=152; 83 AA; 69 non-AA

b: n=158; 86 AA; 72 non-AA

c: n=185; 103 AA; 82 non-AA

d: n=183; 101 AA; 82 non-AA

e: n=155; 83 AA; 72 non-AA

f: n=120; 62 AA; 58 non-AA

g: n=155; 83 AA; 72 non-AA

h: n=77; 30 AA; 47 non-AA

i: Cohen's *d*=0.66

j: Cohen's *d*=0.32

k: Cohen's *d*=0.41

l: Cohen's *d*=0.32

P-values correspond to racial comparison.