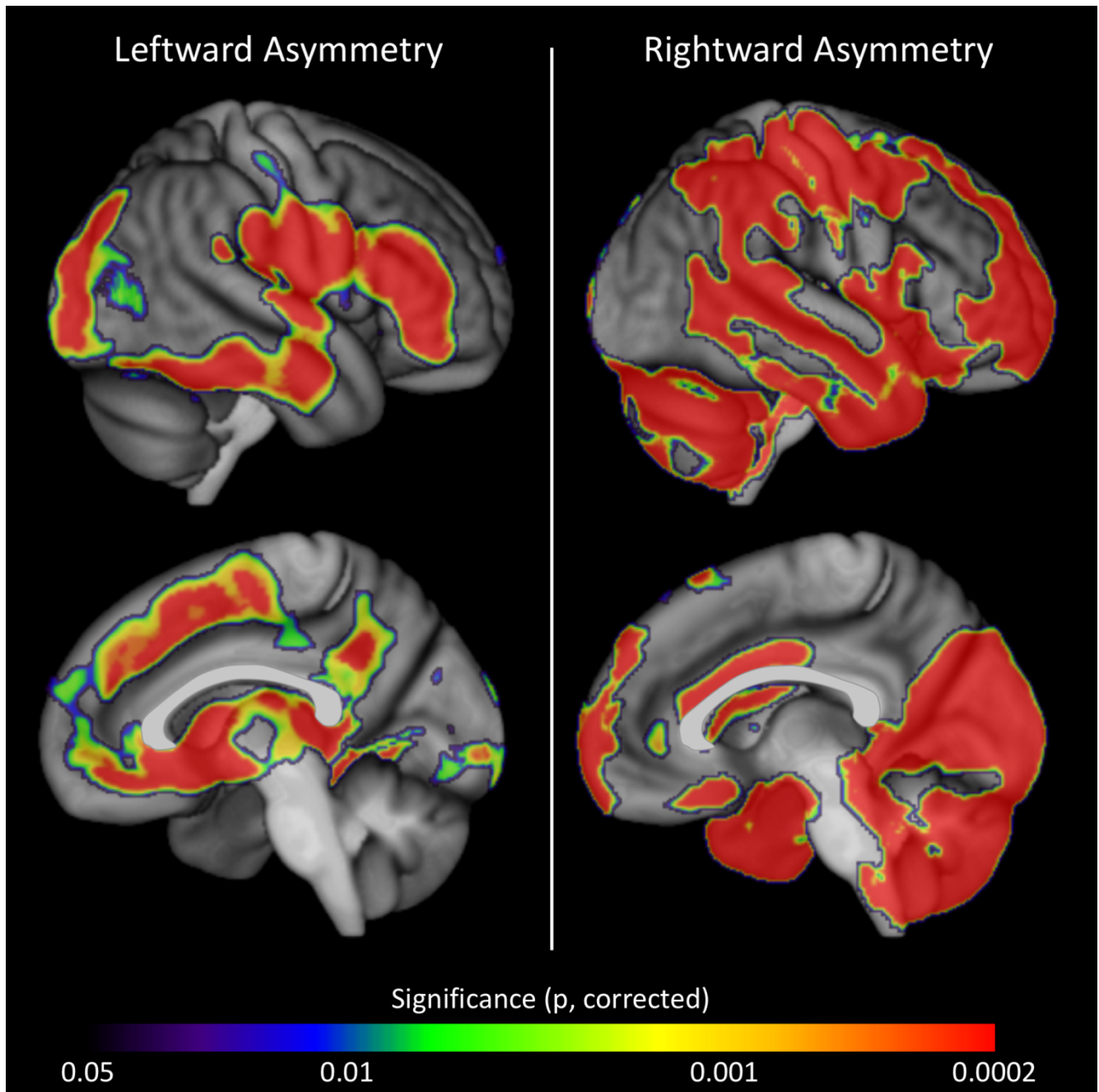


Supplementary Figure 1



**Gray matter asymmetries in the whole sample ( $n = 96$ ).** All results are depicted as overlays on the right hemisphere of the symmetric mean template derived from all 96 brains. Lateral views are shown on the top, medial views on the bottom. The color bar encodes statistical significance ( $p$ ) corrected for multiple comparisons. Overall, gray matter asymmetries are widespread and highly significant confirming that the applied approach is sufficiently sensitive to detect hemispheric asymmetries; the spatial pattern of left- and rightward asymmetries matches well previously reported findings in VBM asymmetry analyses.