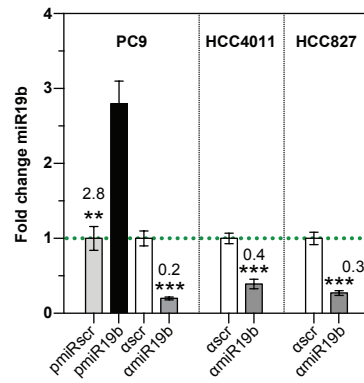


Suppl. Fig. S3



**Supplementary Figure S3: miR-19b expression levels of pre-miR-19b and anti-miR-19b-transduced NSCLC cells.** miR-19b expression levels were analyzed by real-time qPCR relative to RNU48. Results are presented as mean  $\pm$ SD (n=3). \*, p<0.05; \*\*, p<0.01; \*\*\*, p<0.001.