

Supporting Information

Peptide-targeted, stimuli-responsive polymersomes for delivering a cancer stemness inhibitor to cancer stem cell microtumors

Fataneh Karandish ^a, James Froberg ^b, Pawel Borowicz ^c, John C. Wilkinson ^d, Yongki Choi ^b, Sanku Mallik ^{a*}

^a *Department of Pharmaceutical Sciences, North Dakota State University, Fargo, ND 58108*

^b *Department of Physics, North Dakota State University, Fargo, ND 58108*

^c *Department of Animal Sciences, North Dakota State University, Fargo, ND 58108*

^d *Department of Chemistry and Biochemistry, North Dakota State University, Fargo, ND 58108*

Corresponding Author

*E-mail: Sanku.Mallik@ndsu.edu. Phone: 701-231-7888. Fax: 701-231-7831.

Present Address

Department of Pharmaceutical Sciences, North Dakota State, University, Fargo, North Dakota, 58108.

Table of Contents

Figure S1. CD spectra of hexynoic acid conjugated iRGD peptide before (blue) and after reaction [2+3]-cycloaddition with N ₃ -PEG ₁₉₀₀ -PLA ₆₀₀₀ (red):.....	3
Figure S2. FT-IR characterization of iRGD peptide before and after reaction with N ₃ -PEG ₁₉₀₀ -PLA ₆₀₀₀	4
Figure S3. MALDI mass spectrum for hexynoic acid conjugated iRGD peptide.....	5
Figure S4. Band Intensity of neuropilin-1 receptor in prostate and pancreatic cancer stem cells.....	6
Figure S5. Band Intensity of Nanog expression in prostate cancer stem cells (monolayer culture) after treatment.....	7
Figure S6. Band Intensity of Notch-1 expression in prostate cancer stem cells after treatment.....	8

Figure S1. CD spectra of hexynoic acid conjugated iRGD peptide before (blue) and after reaction [2+3]-cycloaddition with N₃-PEG₁₉₀₀-PLA₆₀₀₀ (red):

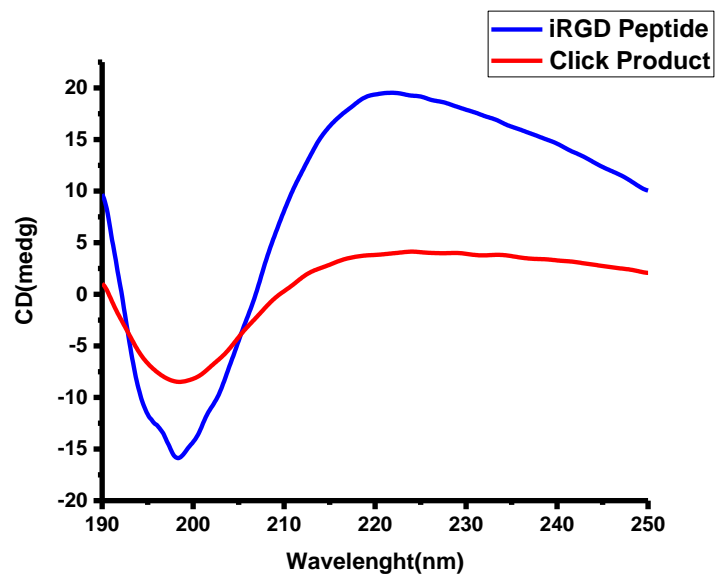


Figure S2. FT-IR characterization of iRGD peptide before and after reaction with N_3 -PEG₁₉₀₀-PLA₆₀₀₀

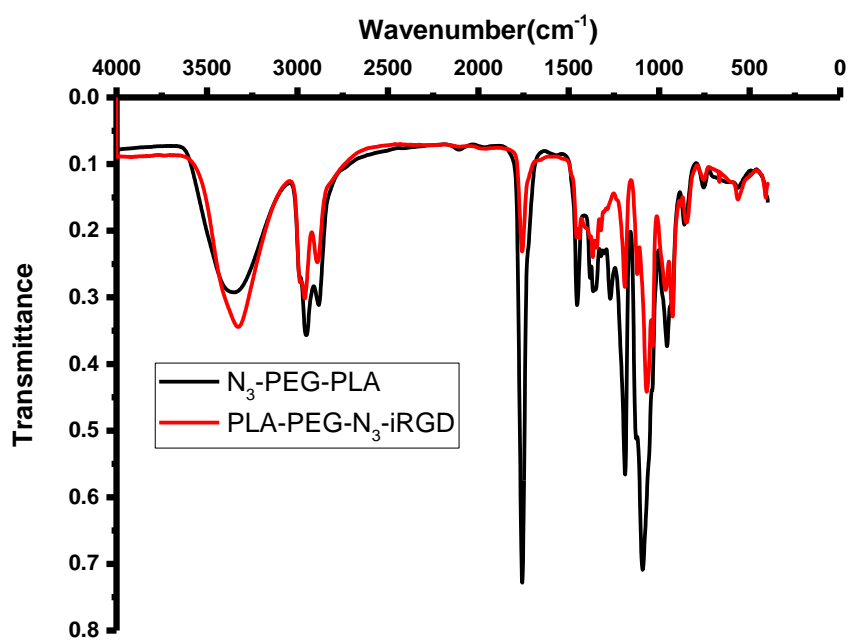
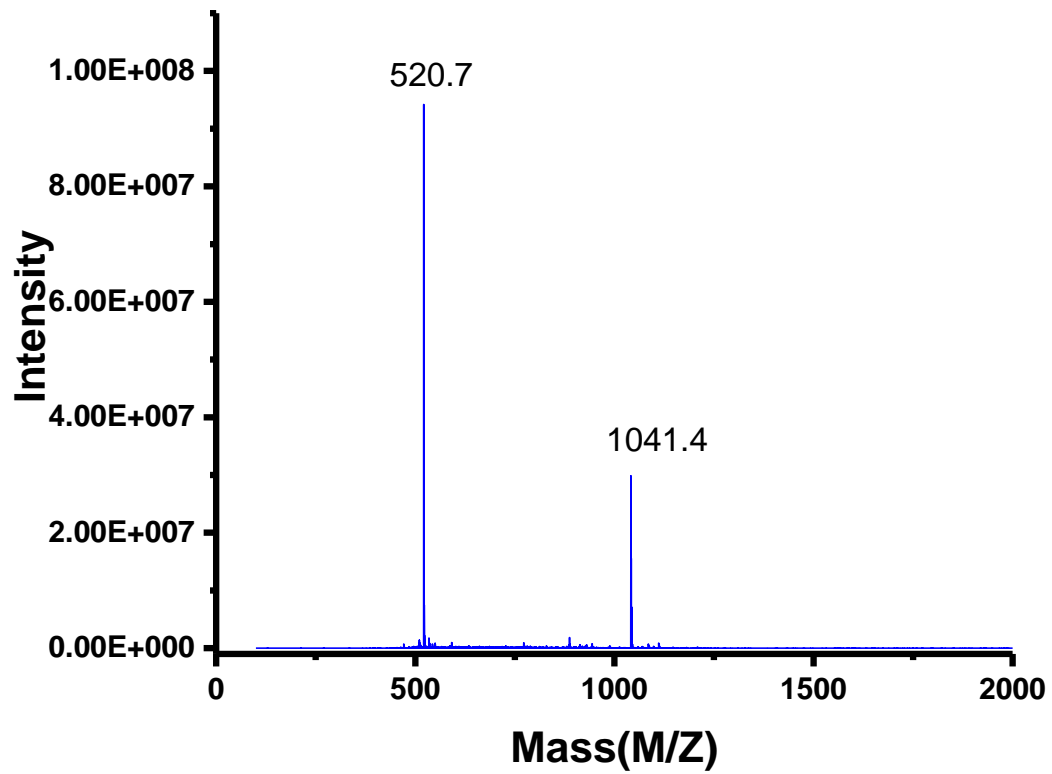
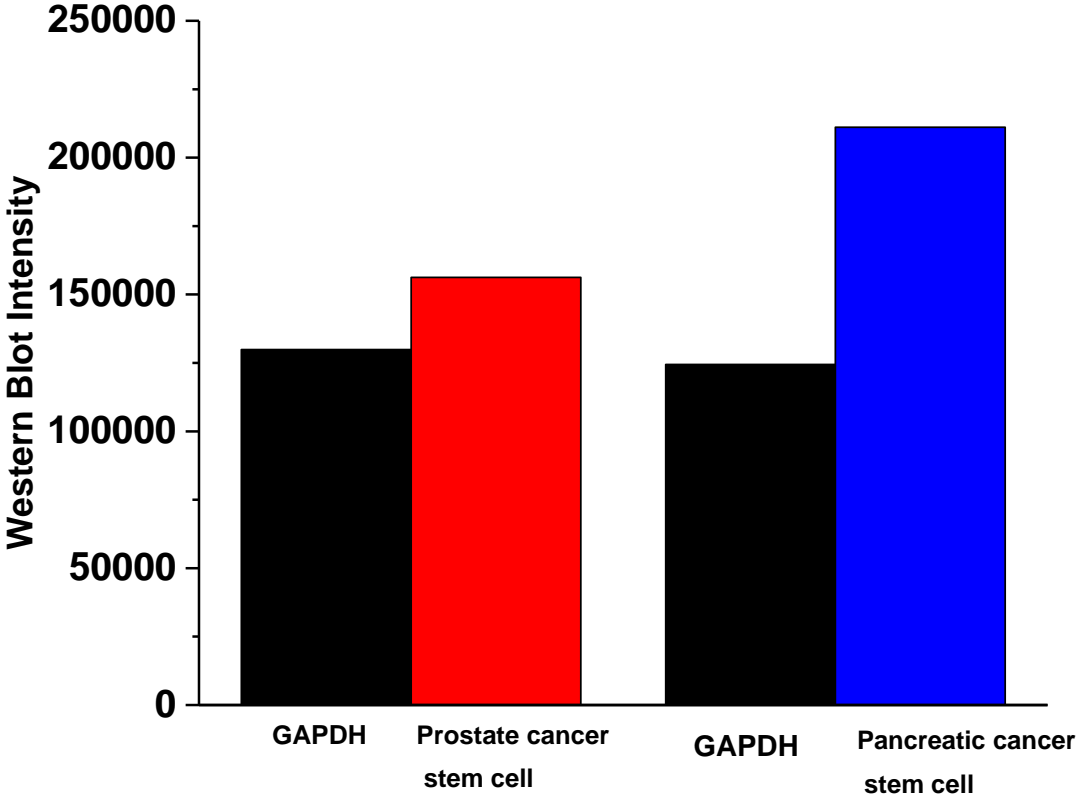


Figure S3. MALDI mass spectrum for hexynoic acid conjugated iRGD peptide.



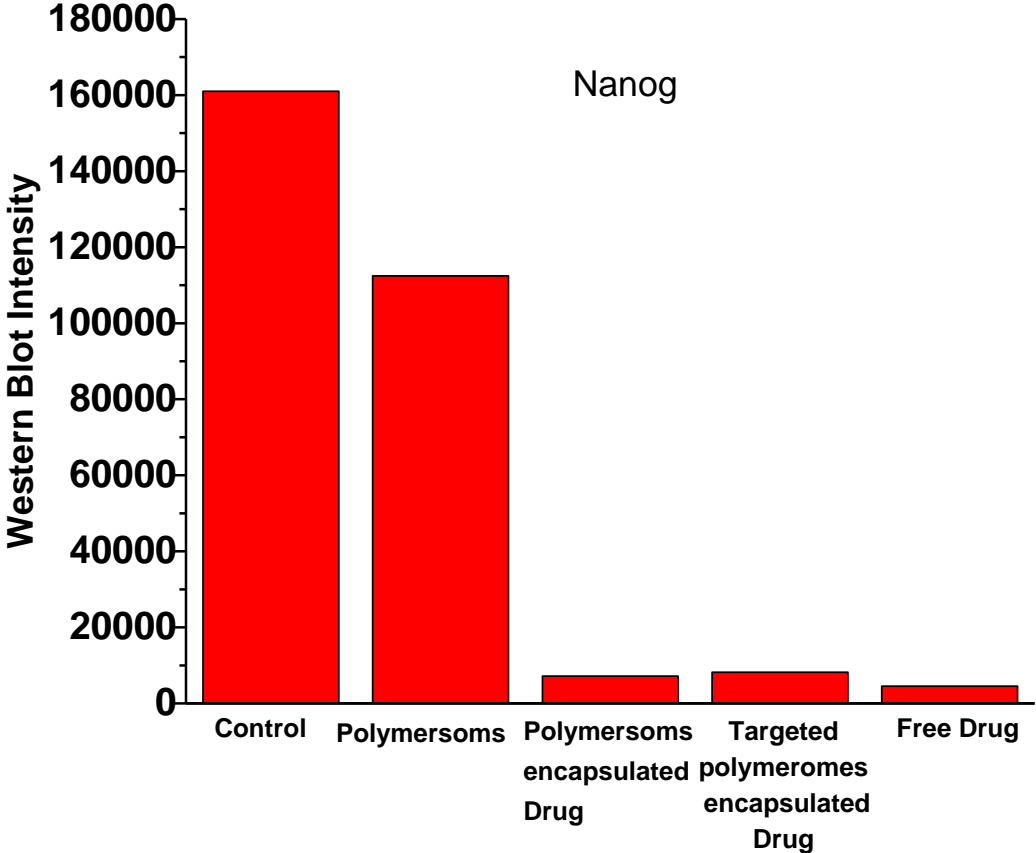
Observed mass: 1041.4, Calculated mass: 1042.0

Figure S4. Band Intensity of neuropilin-1 receptor in prostate and pancreatic cancer stem cells



The errors are less than 10% for the intensity measurements.

Figure S5. Band Intensity of Nanog expression in prostate cancer stem cells (monolayer culture) after treatment



The errors are less than 10% for the intensity measurements.

Figure S6. Band Intensity of Notch-1 expression in prostate cancer stem cells after treatment

