

TABLE LEGENDS:

Table 1: Patient, tumor, and treatment characteristics overall and in patients with and without prior hepatic resection

Table 2: Univariate and multivariate analyses for local tumor progression-free survival

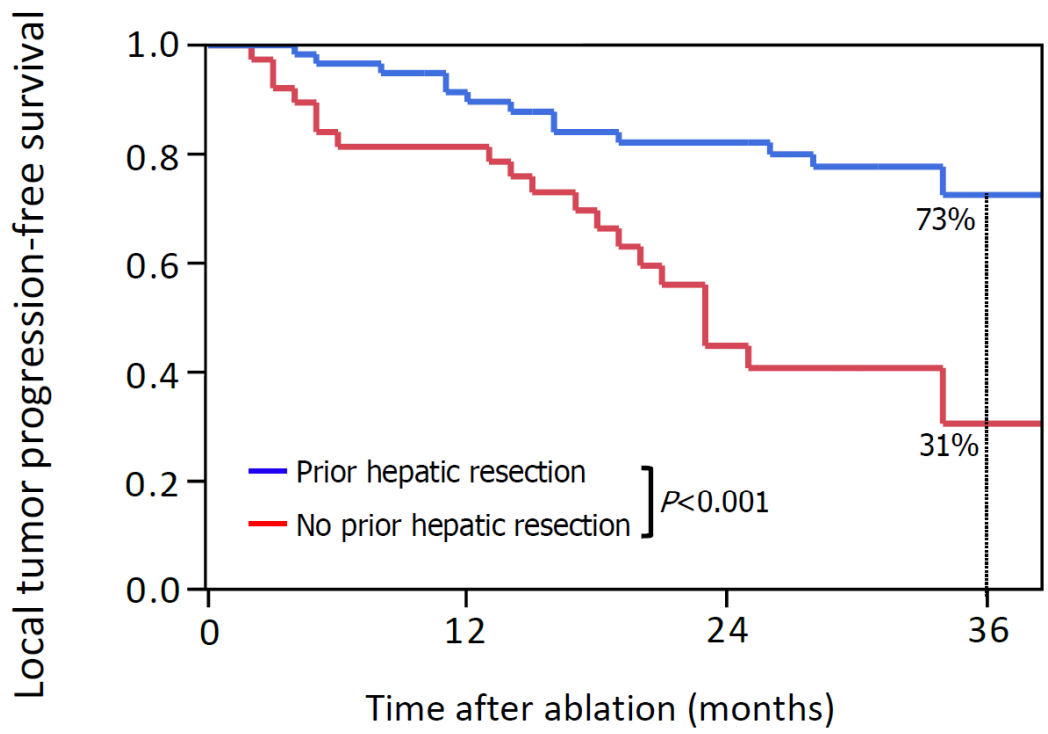
FIGURE LEGENDS:

Figure 1: Flowchart diagram of patient selection and exclusion criteria.

Figure 2: Local tumor progression rates per patient and per lesion in patients with and without prior hepatic resection.

Figure 3: Kaplan-Meier curves for (A) local tumor progression-free survival ($P < 0.001$), (B) recurrence-free survival (freedom from recurrence at any site) ($P = 0.026$), and (C) overall survival ($P = 0.003$) in patients with (blue line) and without (red line) prior hepatic resection.

Supplementary Figure 1: Kaplan-Meier curves for local tumor progression-free survival through per each ablated lesion analysis ($P < 0.001$).



Patients at risk				
Prior hepatic resection	59	52	40	28
No prior hepatic resection	38	31	12	8