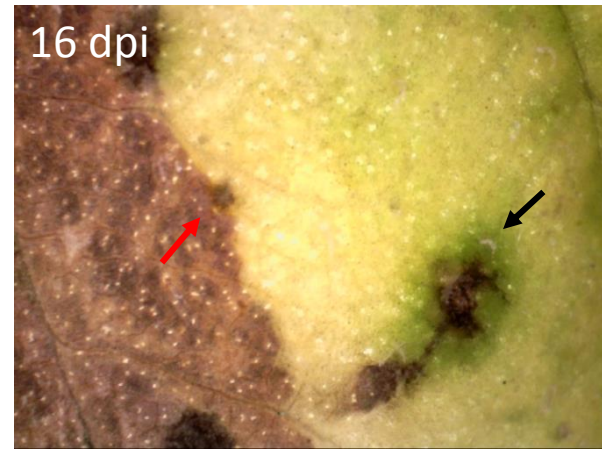
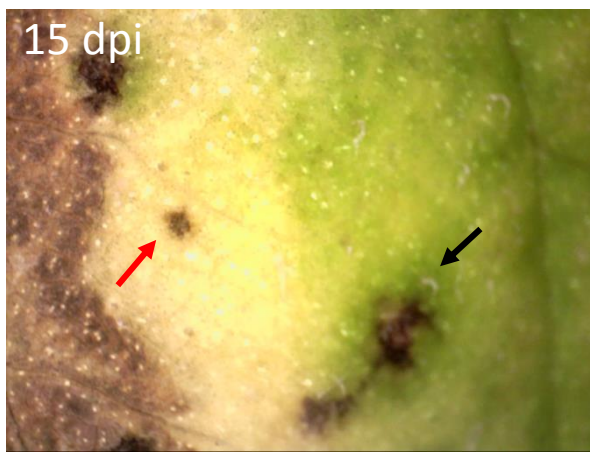
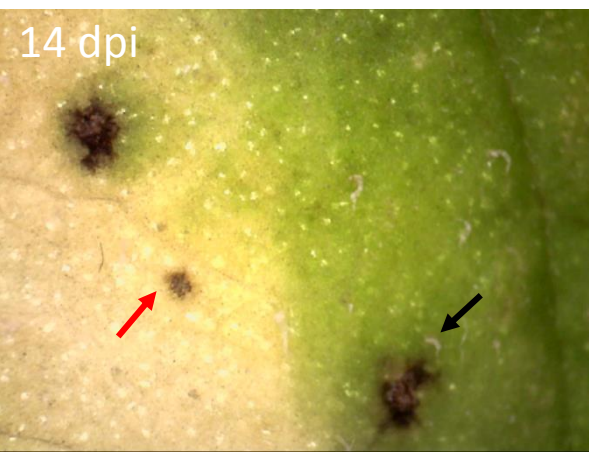
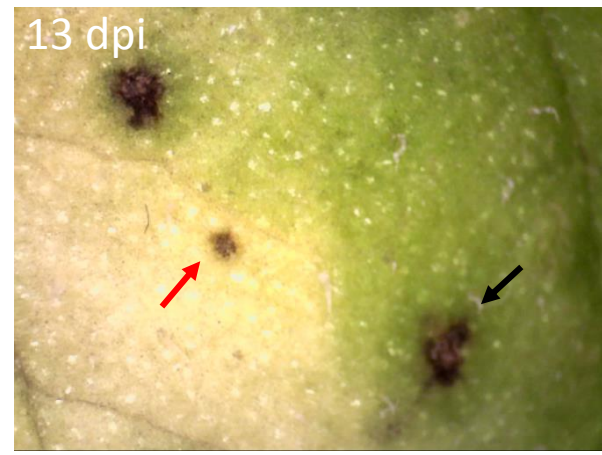
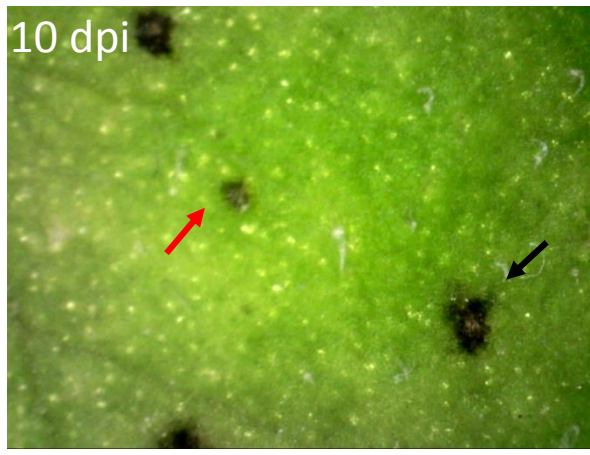
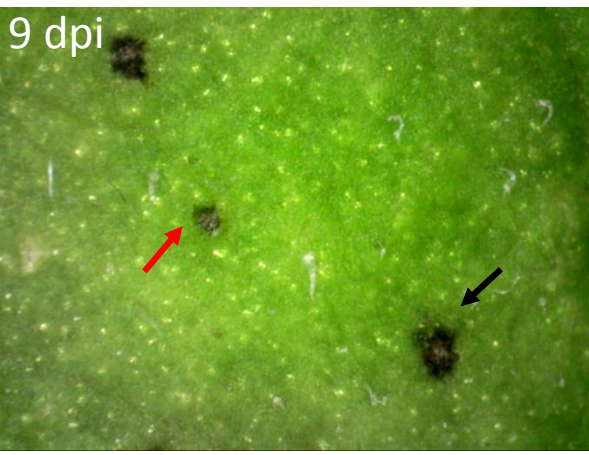
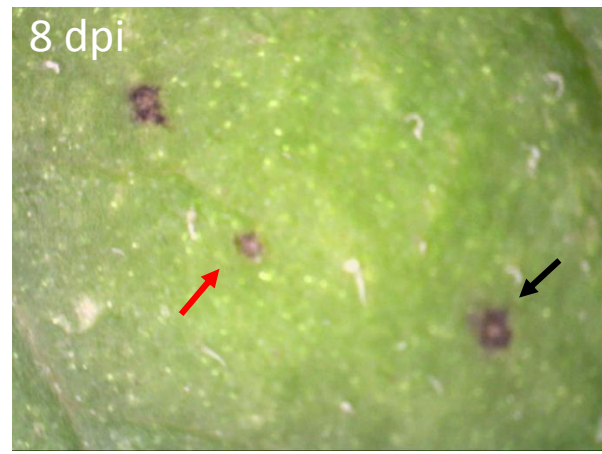


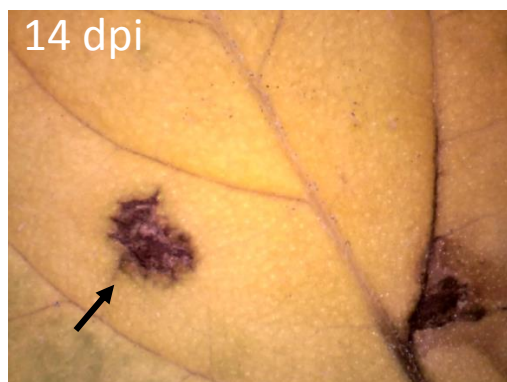
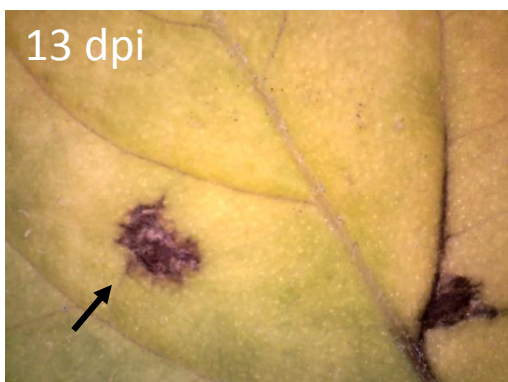
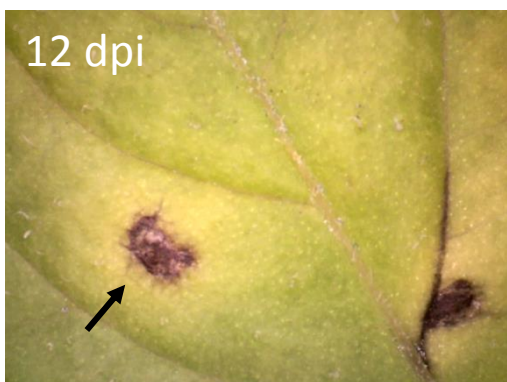
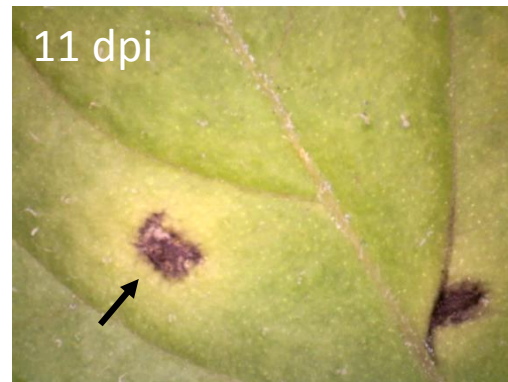
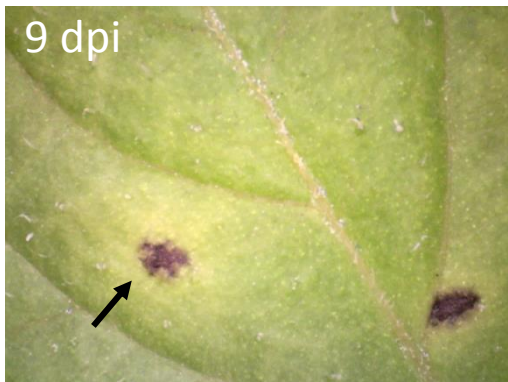
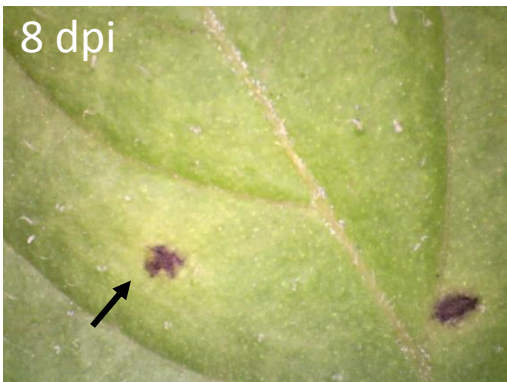
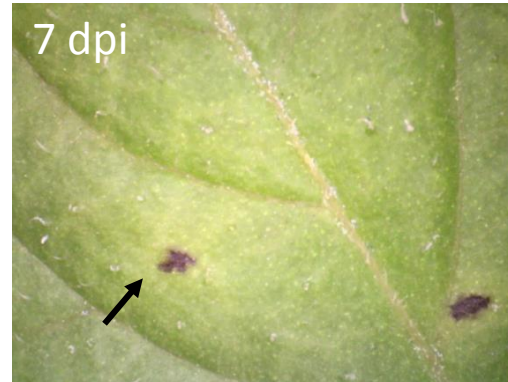
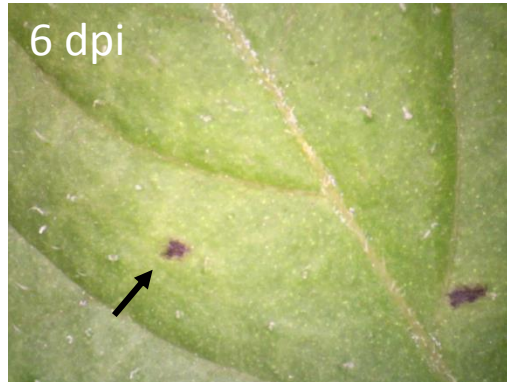
Dynamics of lesion expansion in cv. Rywal

DinoLite digital microscopy

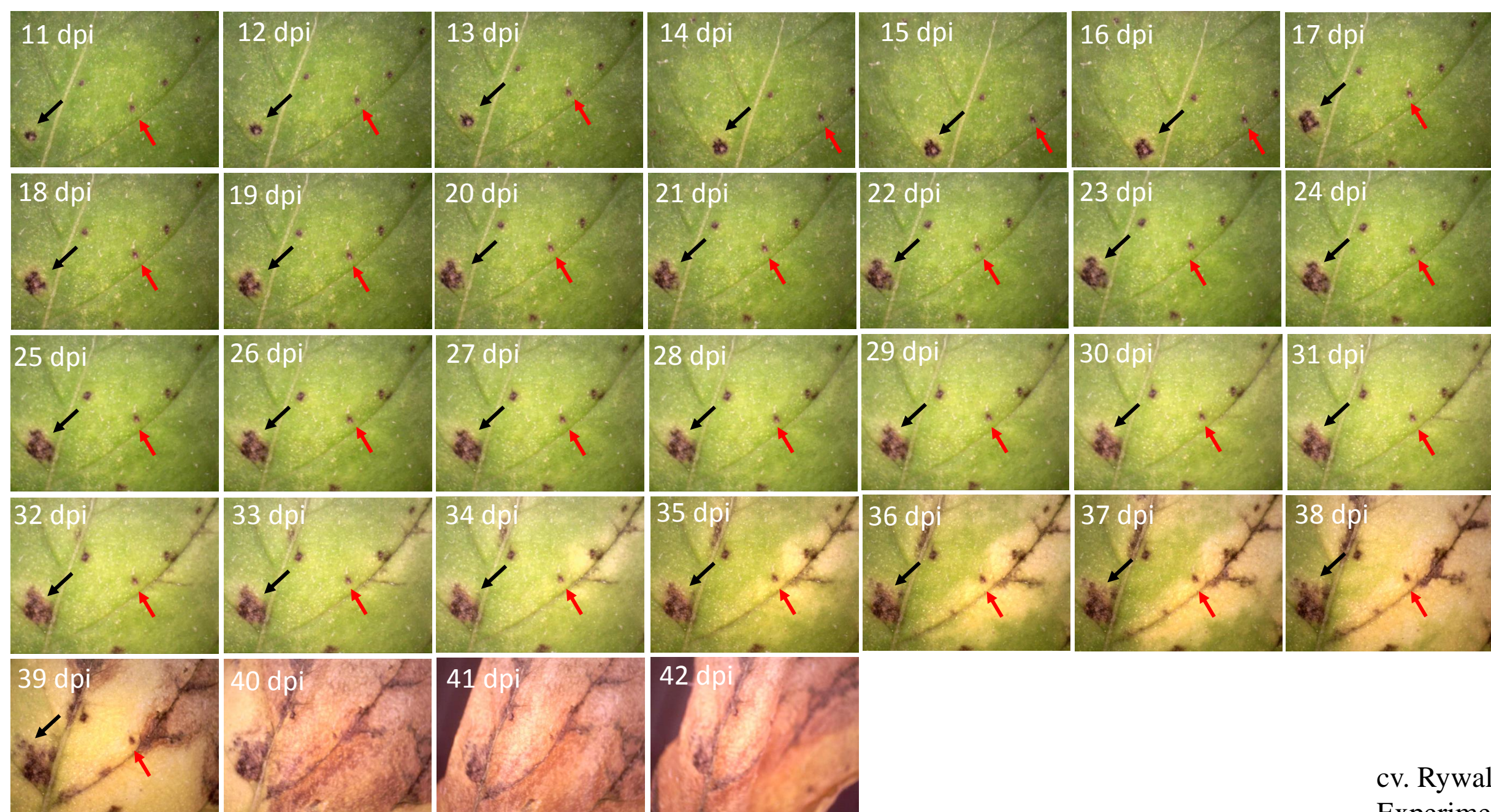
Supplementary Figure 2: Dynamics of lesion expansion in cv. Rywal after PVY N605-GFP inoculation. Lesions expansion was followed by DinoLite digital microscope in 13 independent experiments. Black arrows indicate some of the lesions which continuously expanded even in later dpi, while red arrows indicate some of the lesions which became fully developed already in early time points after inoculation.



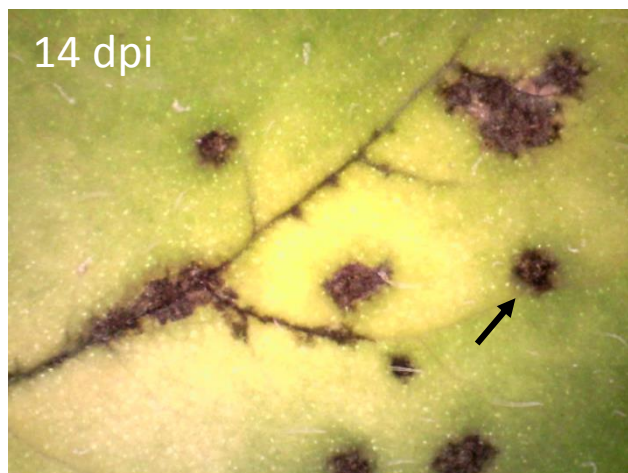
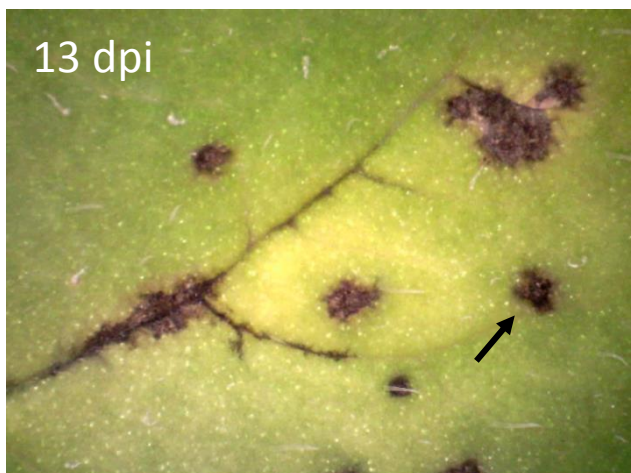
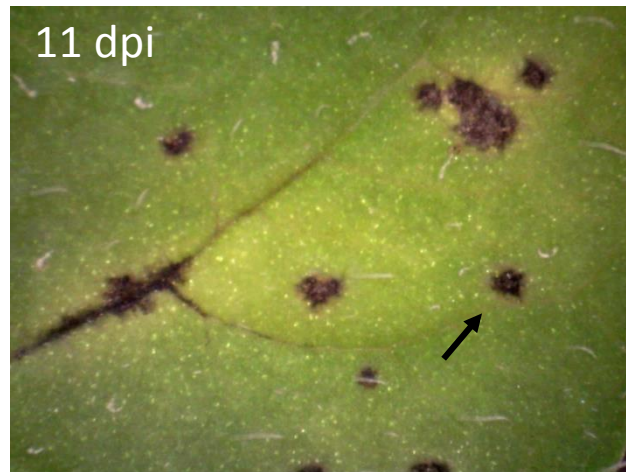
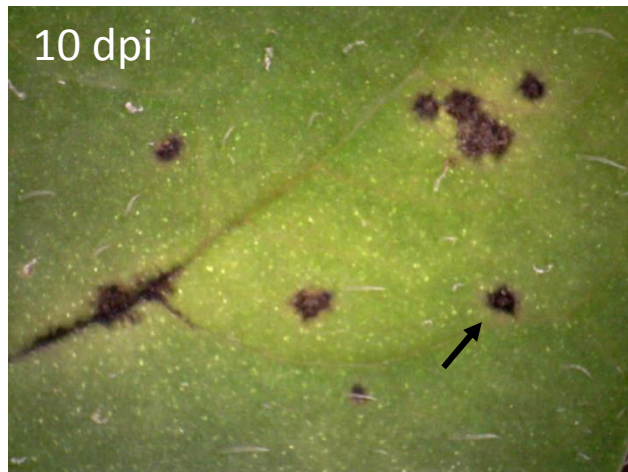
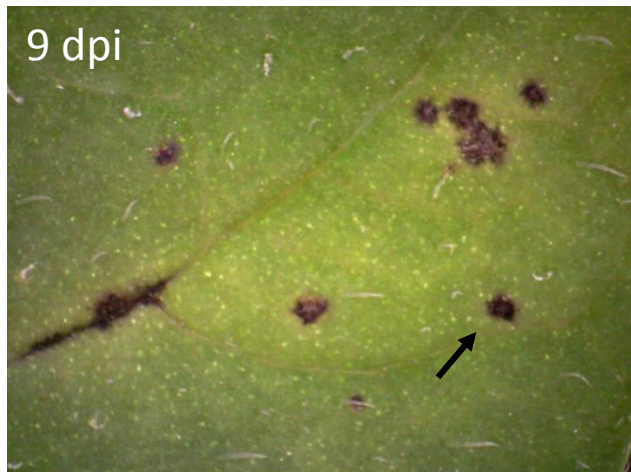
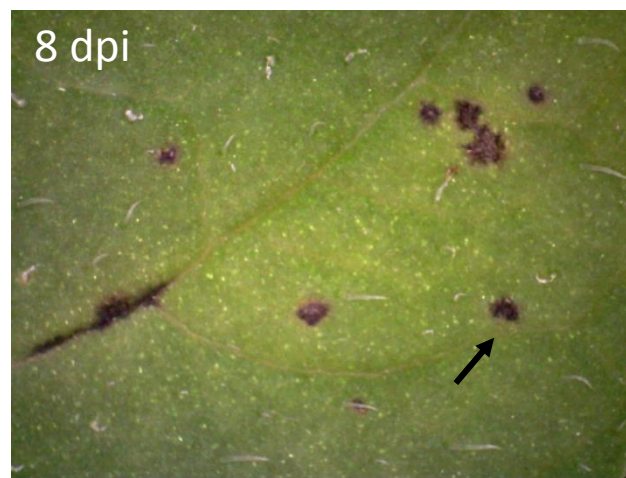
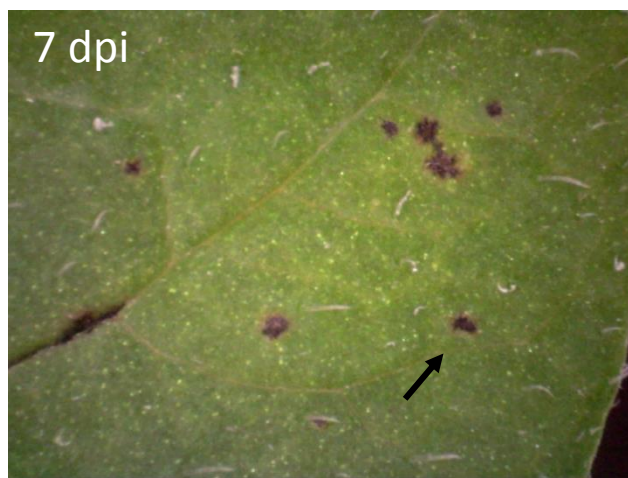
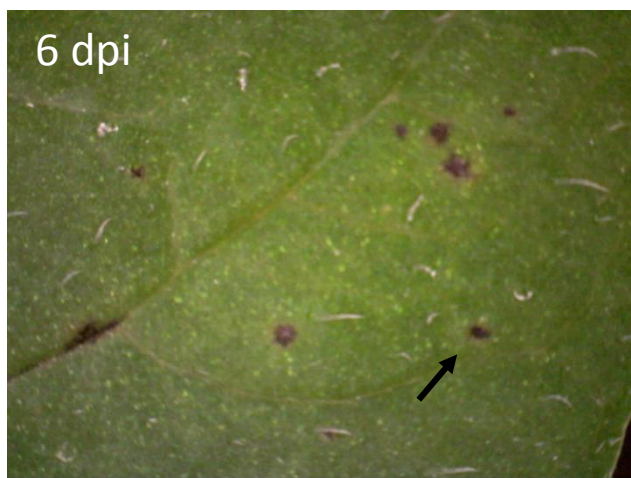
cv. Rywal
Experiment 1
6 dpi – 16 dpi



cv. Rywal
Experiment 2
4 dpi – 14 dpi



cv. Rywal
Experiment 3
11 dpi – 42 dpi

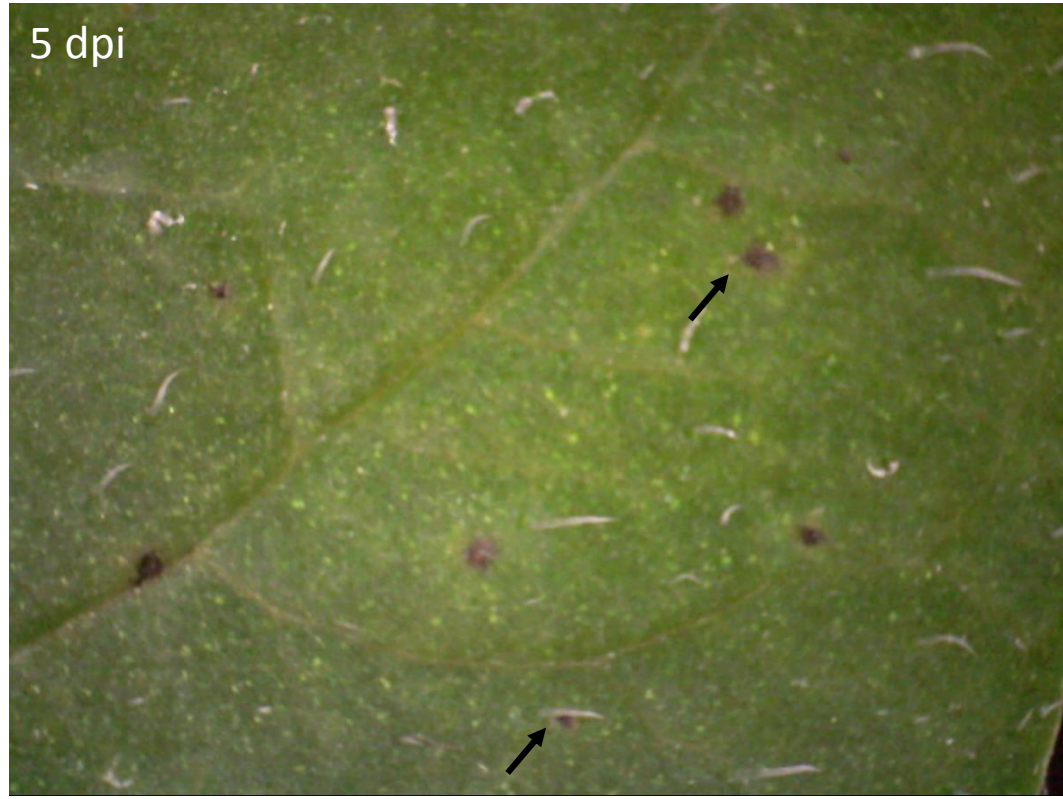


cv. Rywal
Experiment 4
6 dpi – 14 dpi

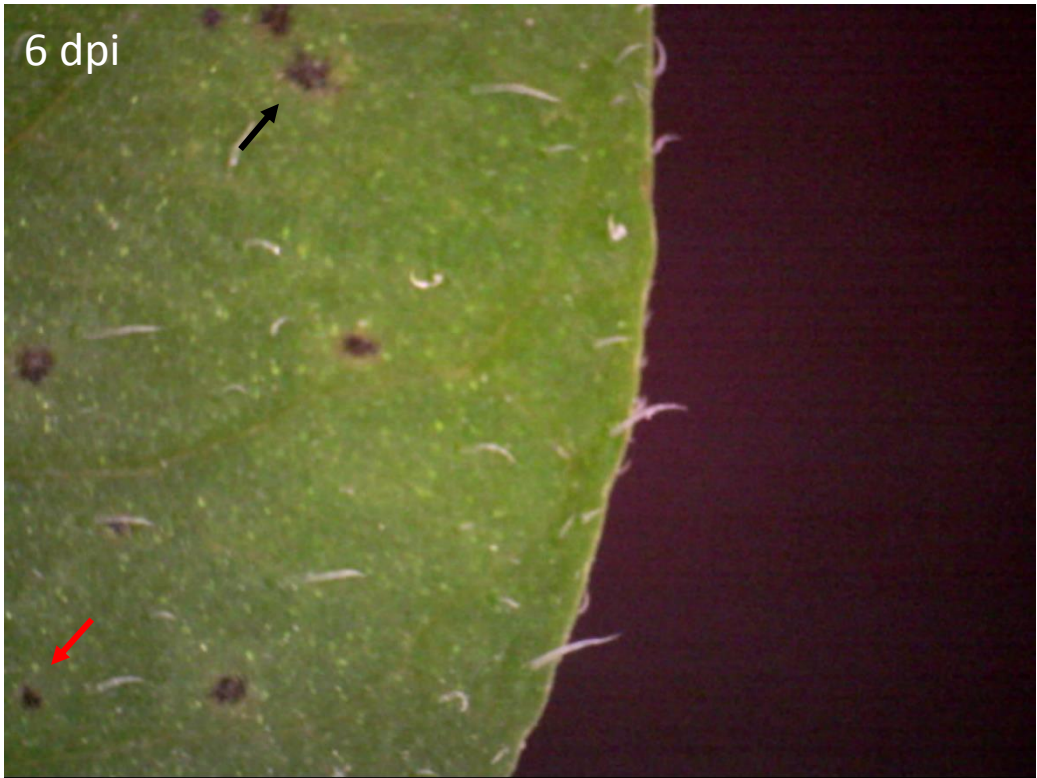
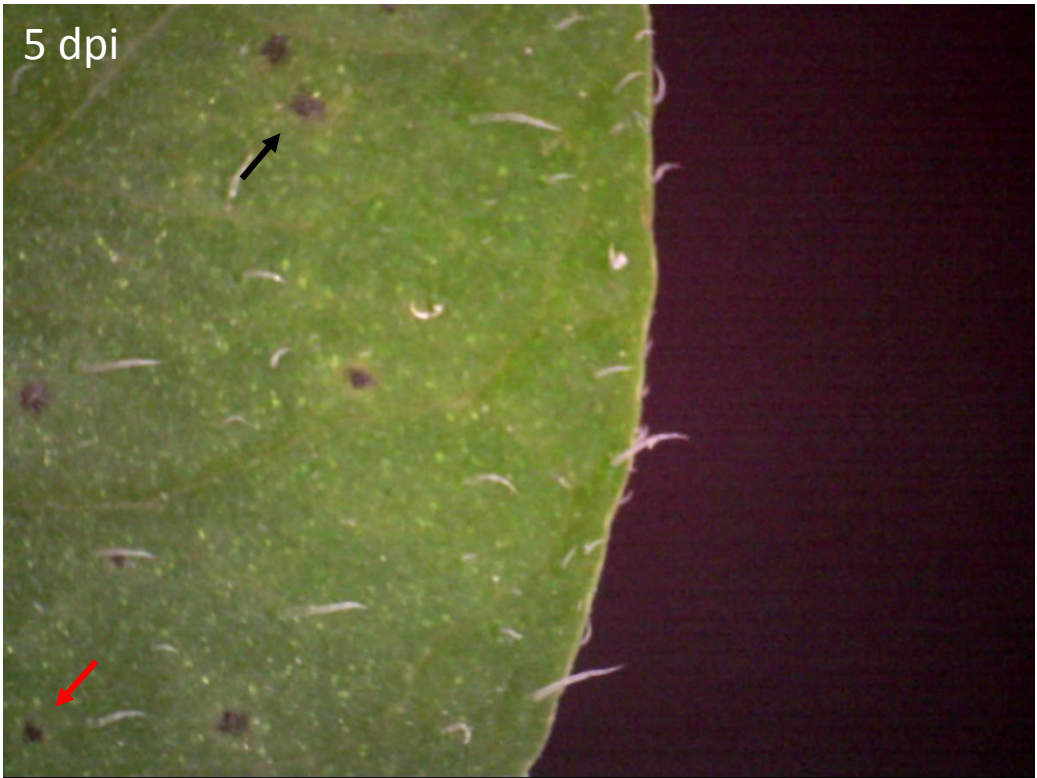
4 dpi



5 dpi



cv. Rywal
Experiment 5
4 dpi – 5 dpi



cv. Rywal
Experiment 6
5 dpi – 6 dpi

5 dpi



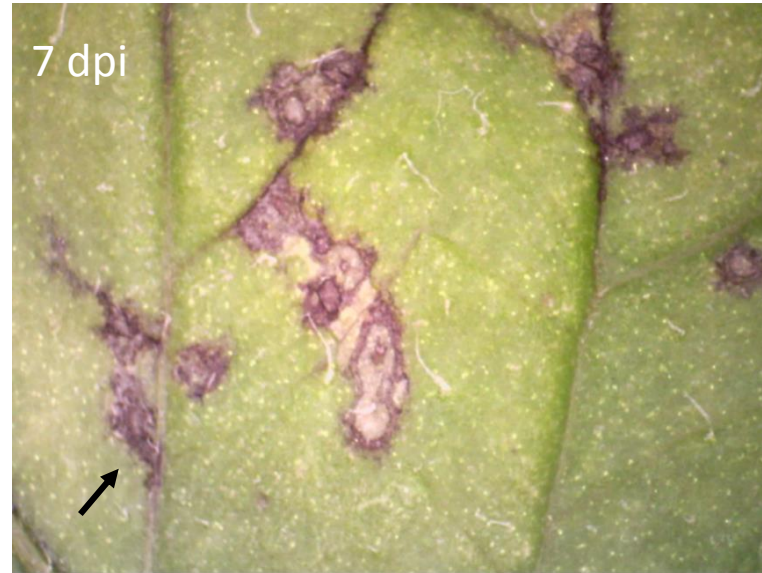
6 dpi



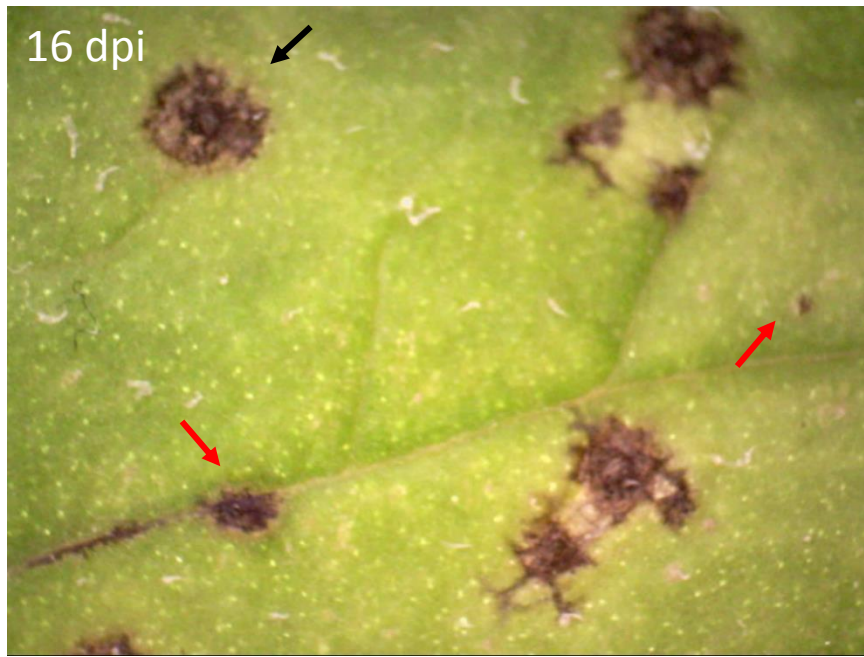
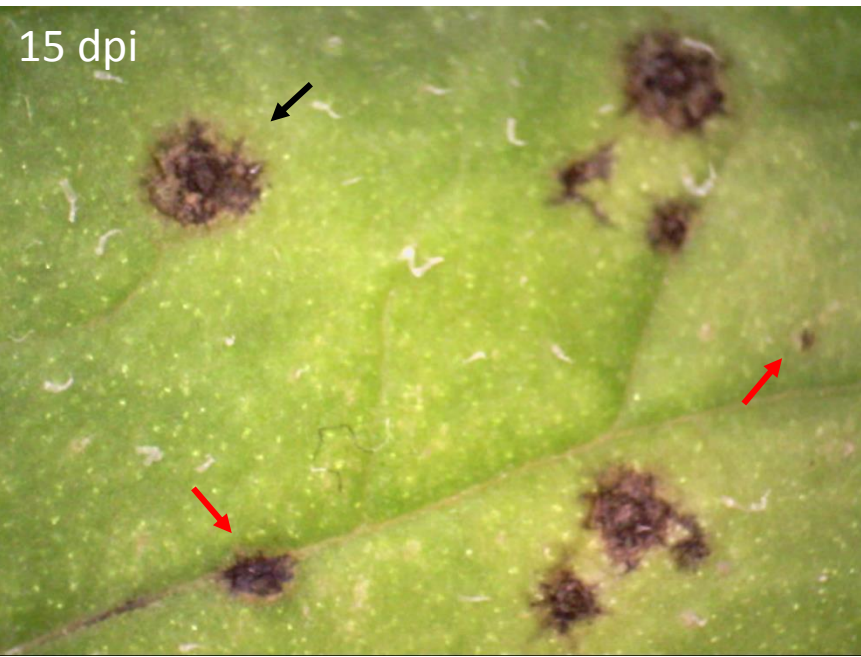
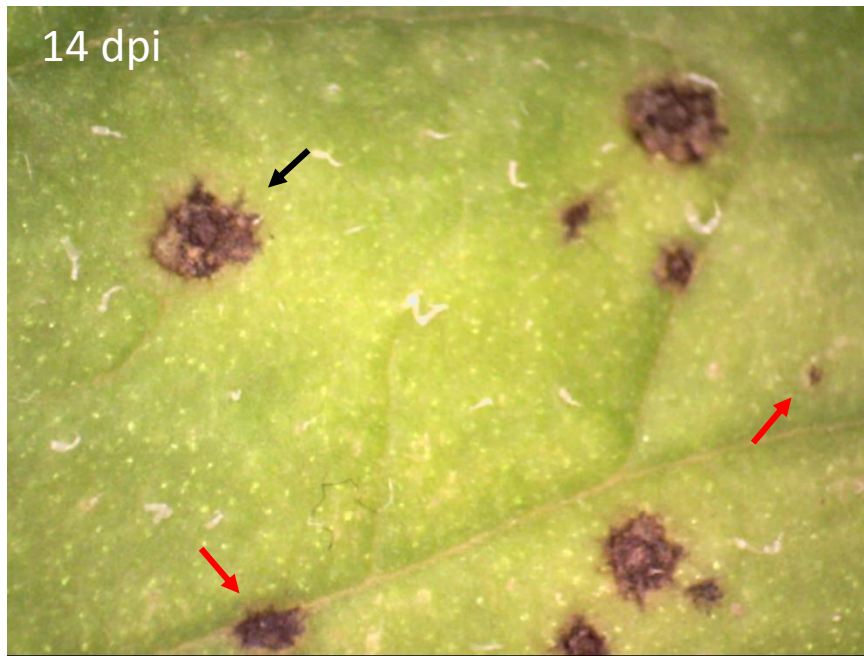
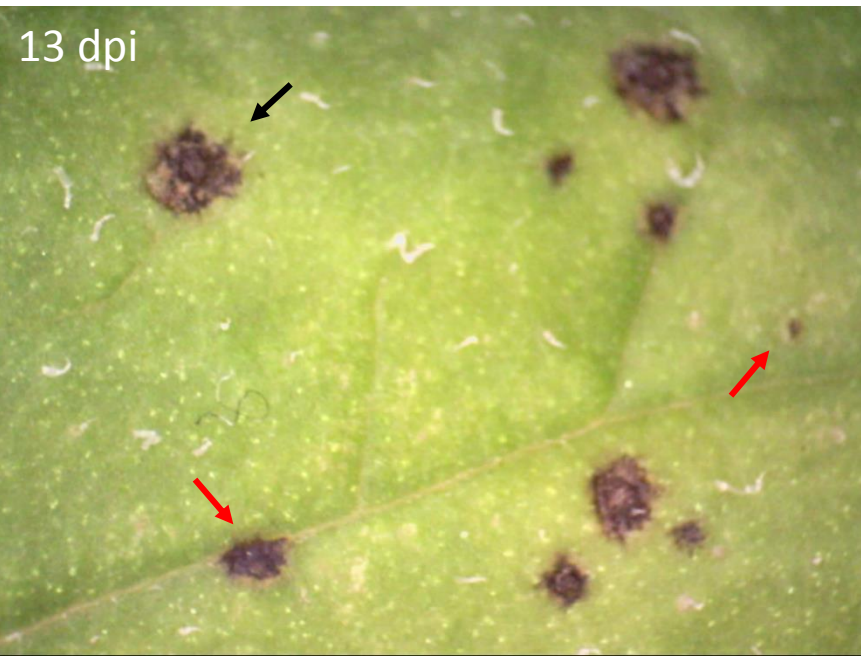
7 dpi



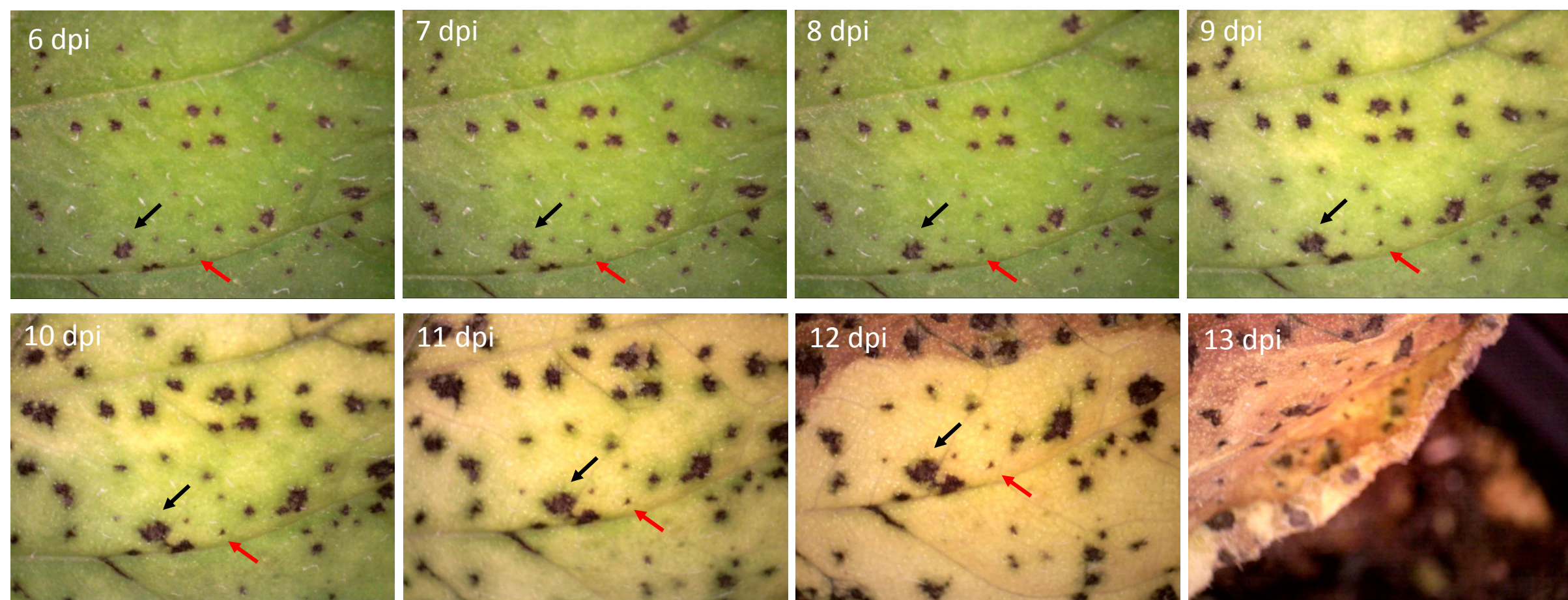
cv. Rywal
Experiment 7
5 dpi – 7 dpi



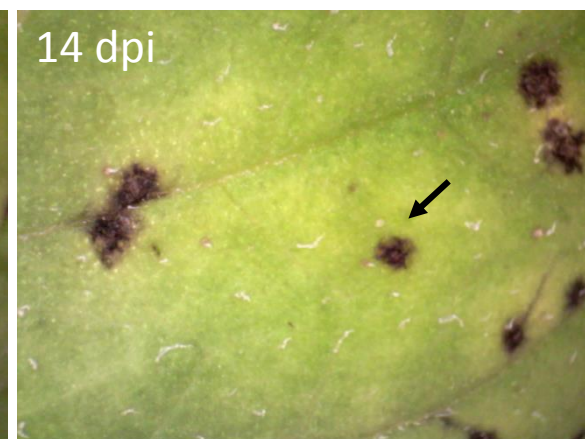
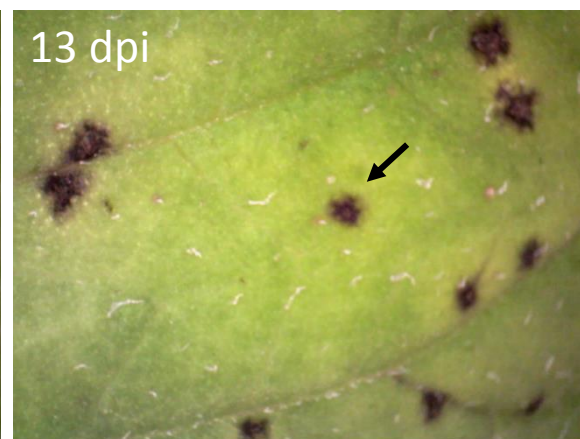
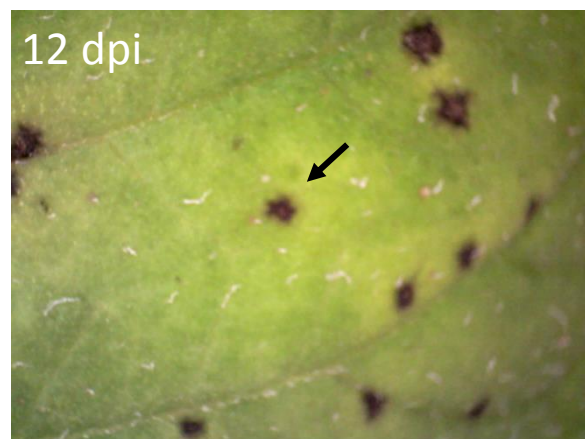
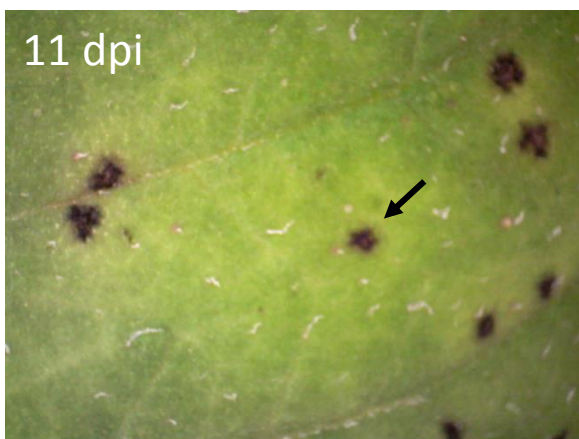
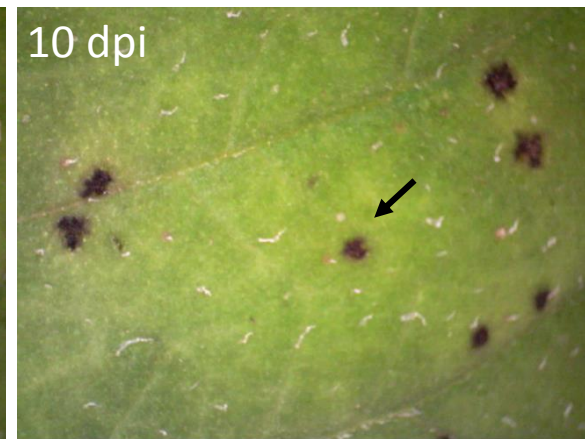
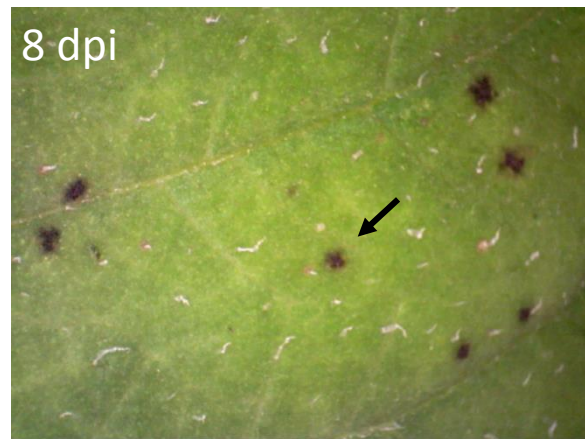
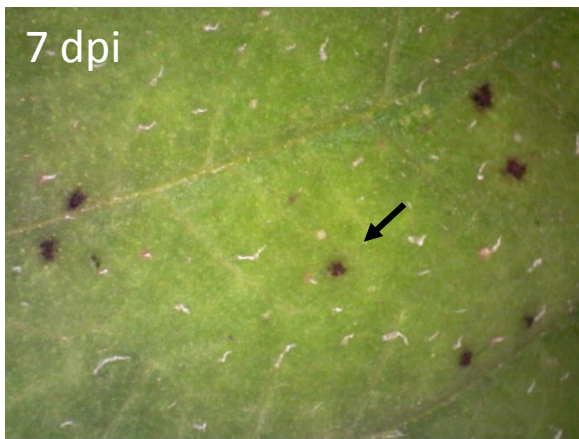
cv. Rywal
Experiment 8
4 dpi – 7 dpi



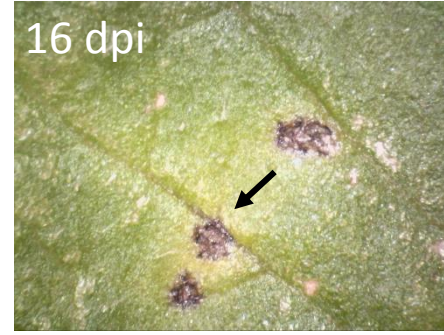
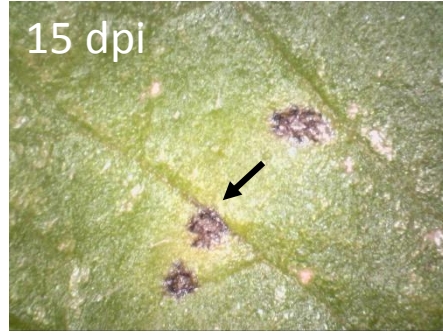
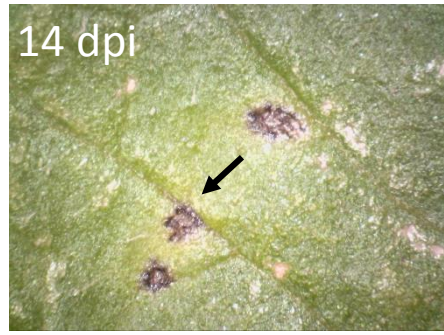
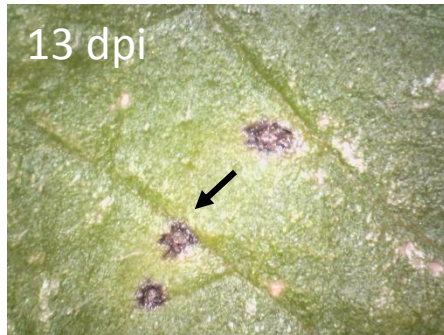
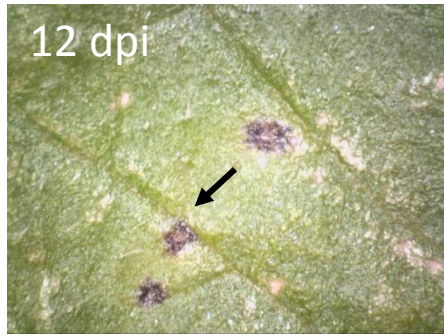
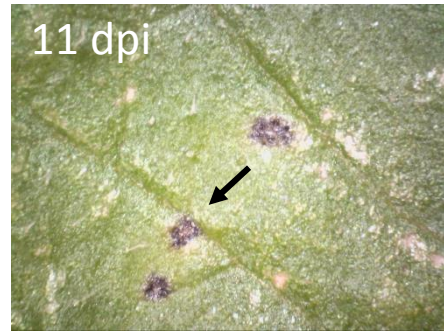
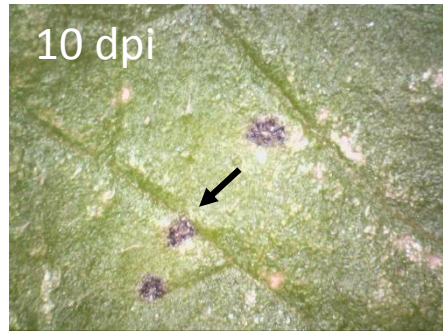
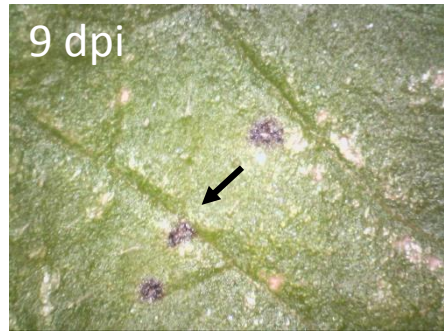
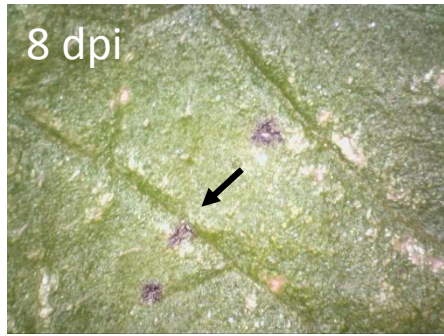
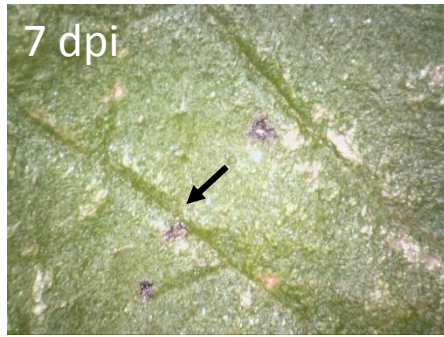
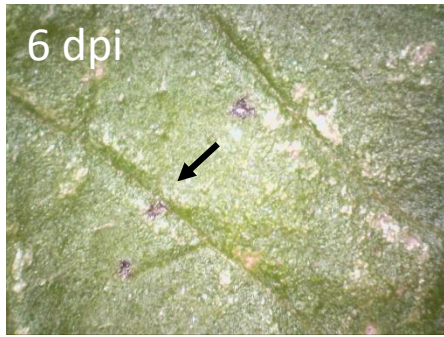
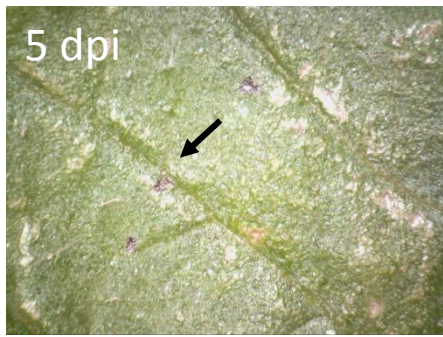
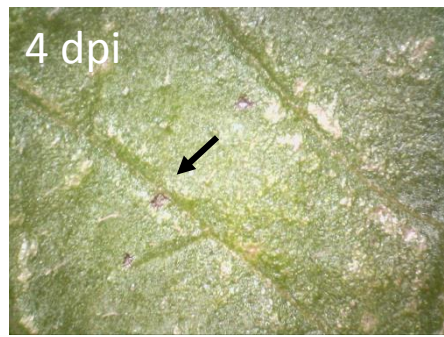
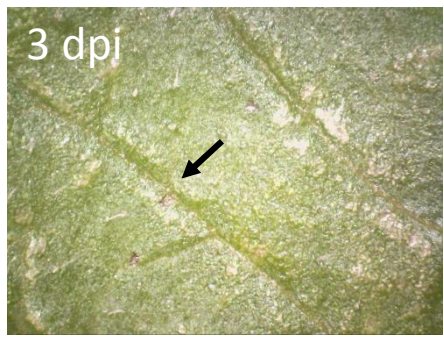
cv. Rywal
Experiment 9
13 dpi – 16 dpi



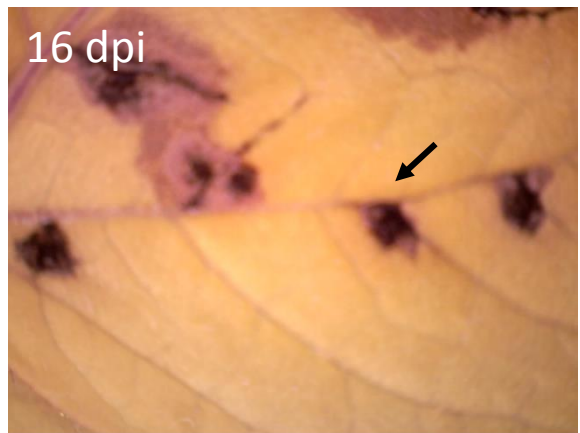
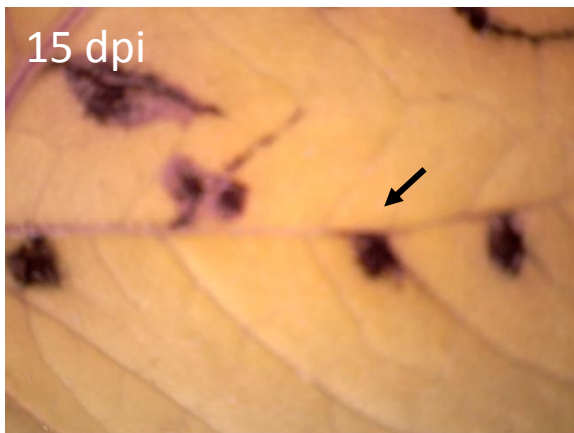
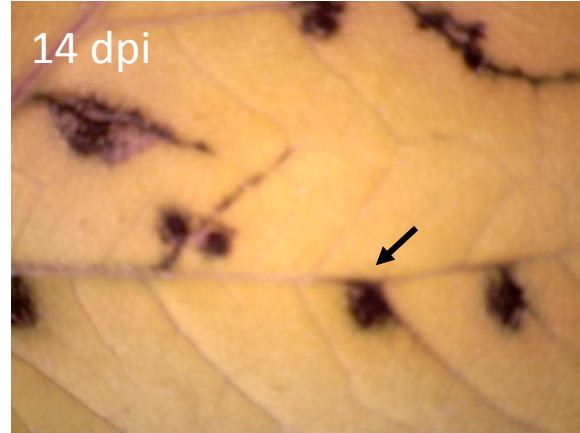
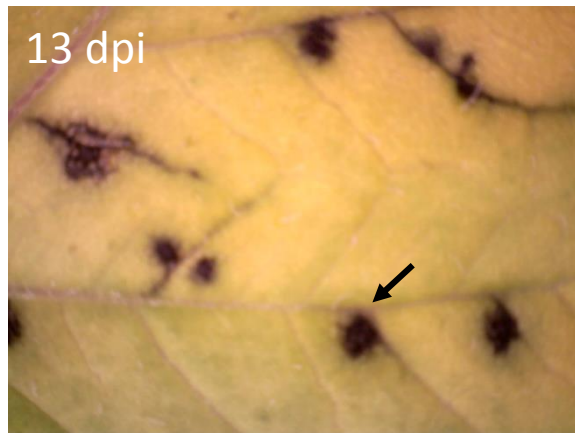
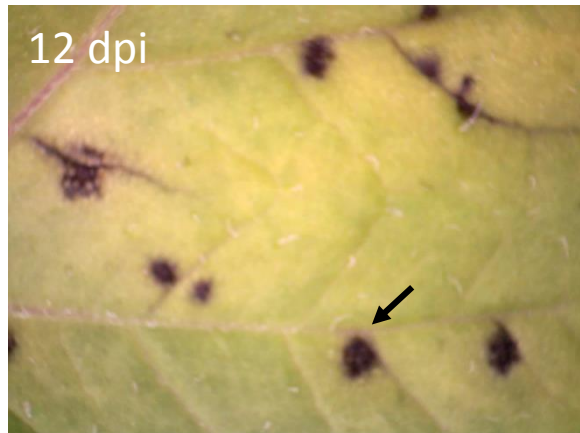
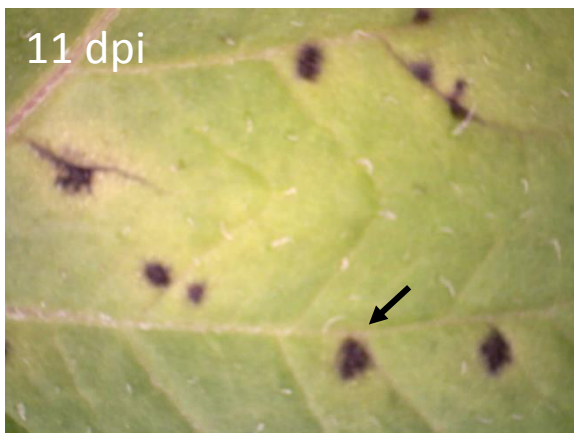
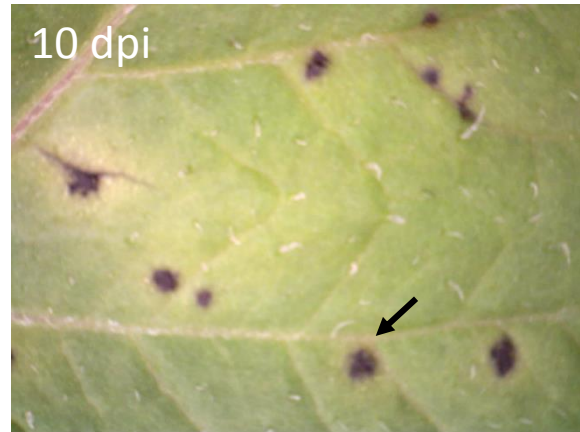
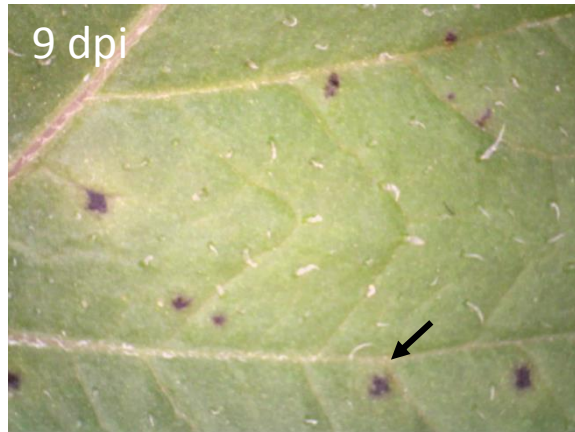
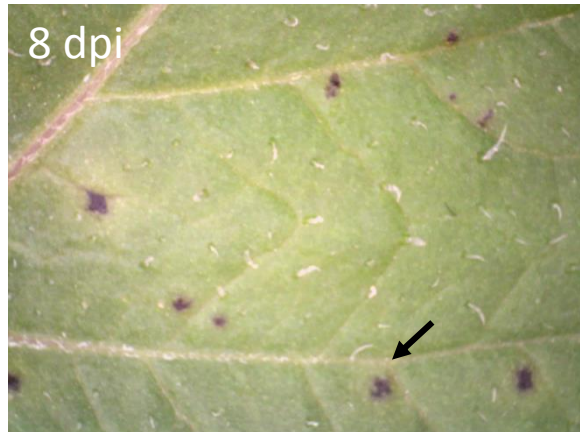
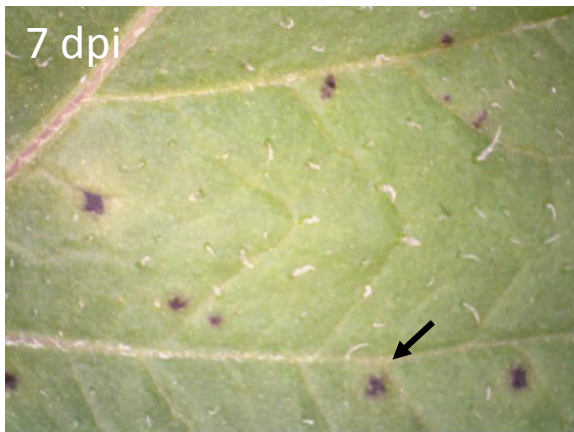
cv. Rywal
Experiment 10
6 dpi – 13 dpi



cv. Rywal
Experiment 11
7 dpi – 14 dpi



cv. Rywal
Experiment 12
3 dpi – 16 dpi



cv. Rywal
Experiment 13
7 dpi – 16 dpi