

**Supplementary Figure 3:** Number of lesions developed on potato leaves after inoculation with PVY N605-GFP. Lesions were counted in 16 cv. Rywal and 11 NahG-Rywal plants on all three inoculated leaves from 3 dpi to 7 dpi and on 11 dpi to study the dynamics of lesions formation. (A) Numbers of lesions observed on each plant leaf at each timepoint is shown. X: detached leaf for confocal microscopy, F: the leaf fell off the plant, /: lesions not counted. Some of the leaves (marked with green in the tables) from this experiment were detached from the plants and used to follow virus spread around the lesions (see exp2 in Supplementary Table 1). (B) Numbers of lesions for each plant leaf from 3 to 11 dpi for selected plants for both genotypes. (C) Standardized imputed cumulative sums of lesions on each leaf from 3 to 11 dpi for selected plants (see Methods for data filtering details/description).

(A)

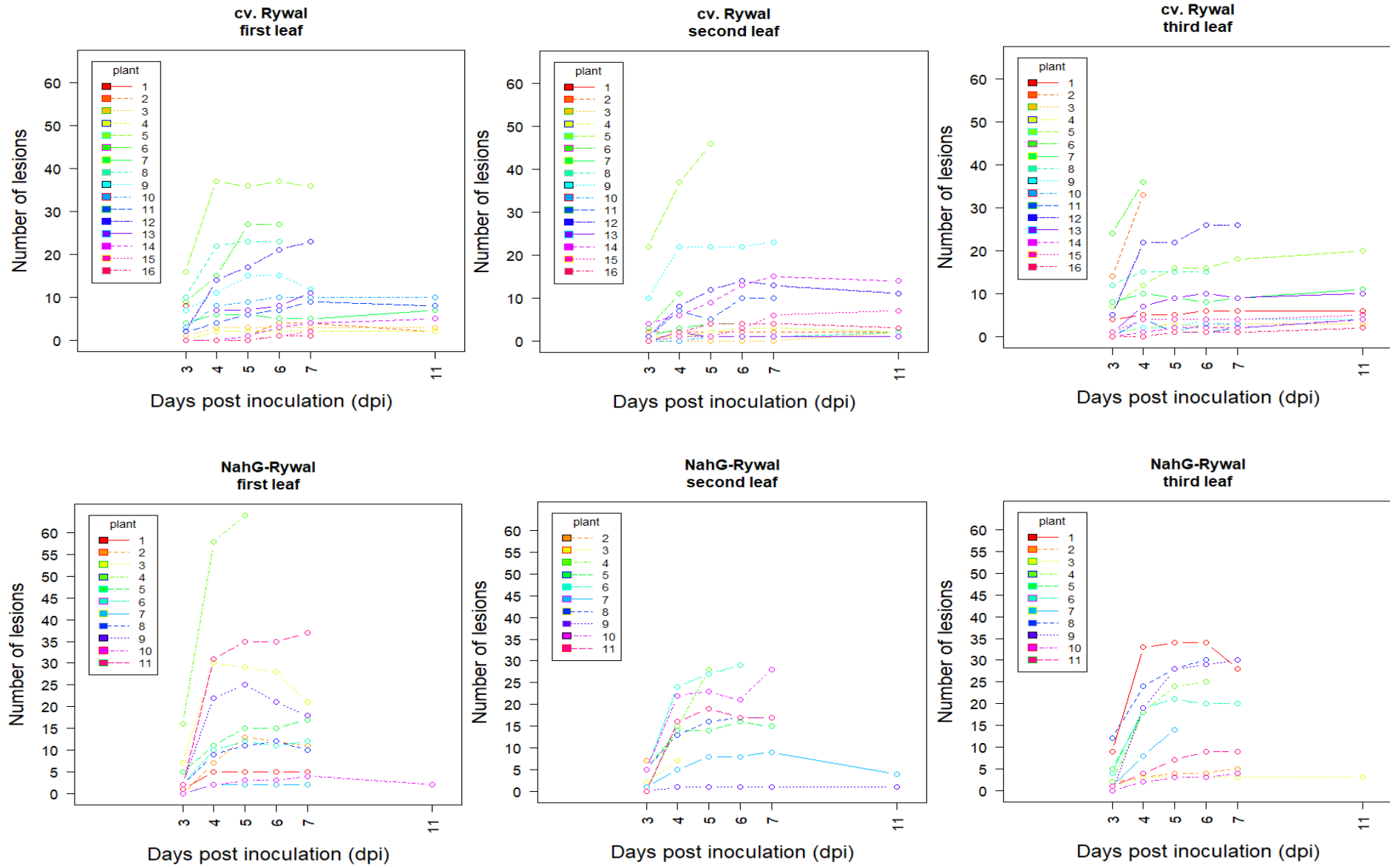
**cv. Rywal**

plant no	1			2			3			4			5			6			7			8			9			10			11			12			13			14			15			16				
	1	2	3	1	2	3	1	2	3	1	2	3	1	2	3	1	2	3	1	2	3	1	2	3	1	2	3	1	2	3	1	2	3	1	2	3	1	2	3	1	2	3	1	2	3	1	2	3	1	2
3 dpi	8	2	4	0	2	14	1	0	1	0	1	1	16	22	7	9	3	24	4	1	8	10	0	12	7	10	1	3	0	0	2	1	0	2	1	5	/	0	1	0	4	0	0	0	1	0	0	0		
4 dpi	x	x	5	0	2	33	3	0	2	2	1	2	37	37	12	15	11	36	6	3	10	22	1	15	11	22	2	8	0	0	4	7	4	14	8	22	7	2	7	0	6	1	0	1	4	0	2	0		
5 dpi	x	x	5	1	2	x	3	0	3	2	2	3	36	46	16	27	x	x	6	4	9	23	1	15	15	22	2	9	1	1	6	5	1	17	12	22	7	1	9	1	9	2	0	1	4	0	4	1		
6 dpi	x	x	6	4	2	x	3	0	2	2	3	x	37	x	16	27	x	x	5	4	8	23	1	15	15	22	4	10	1	3	7	10	1	21	14	26	8	1	10	3	13	2	1	3	4	1	4	1		
7 dpi	x	x	6	4	2	x	3	0	3	2	3	x	36	x	18	F	x	x	5	x	9	F	1	x	12	23	4	10	1	3	9	10	2	23	13	26	1	1	19	4	15	2	2	6	4	1	4	1		
11 dpi	x	x	6	2	2	x	3	2	3	2	2	x	F	x	20	F	x	x	7	x	11	F	2	x	F	x	4	10	1	x	8	F	4	F	11	F	F	1	10	5	14	4	F	7	5	F	3	2		

**NahG-Rywal**

plant no	1			2			3			4			5			6			7			8			9			10			11		
	1	2	3	1	2	3	1	2	3	1	2	3	1	2	3	1	2	3	1	2	3	1	2	3	1	2	3	1	2	3	1	2	3
3 dpi	1	F	9	0	7	2	7	2	1	16	0	2	5	5	5	2	5	4	0	1	1	2	5	12	2	0	0	0	5	0	2	0	1
4 dpi	5	F	33	7	x	3	30	7	3	58	15	18	11	14	18	10	24	19	2	5	8	9	13	24	22	1	19	2	22	2	31	16	4
5 dpi	5	F	34	13	x	4	29	x	3	64	28	24	15	14	x	12	27	21	2	8	14	11	16	28	25	1	28	3	23	3	35	19	7
6 dpi	5	F	34	12	x	4	28	x	3	x	x	25	15	16	x	11	29	20	2	8	x	12	17	30	21	1	29	3	21	3	35	17	9
7 dpi	5	F	28	11	x	5	21	x	3	x	x	F	17	15	x	12	x	20	2	9	x	10	17	x	18	1	30	4	28	4	37	17	9
11 dpi	F	F	F	F	x	/	F	x	3	x	x	F	F	F	x	F	x	F	F	4	x	F	F	x	x	1	x	2	x	F	F	F	F

(B)



(C)

