

## Roles of Cytosolic Phospholipase A2 $\alpha$ in Reproductive and Systemic Toxicities in 2,3,7,8-Tetrachlorodibenzo-*p*-dioxin Exposed Mice

Nozomi Fujisawa, Wataru Yoshioka<sup>\*2</sup>, Hiroyuki Yanagisawa, and Chiharu Tohyama<sup>\*1</sup>

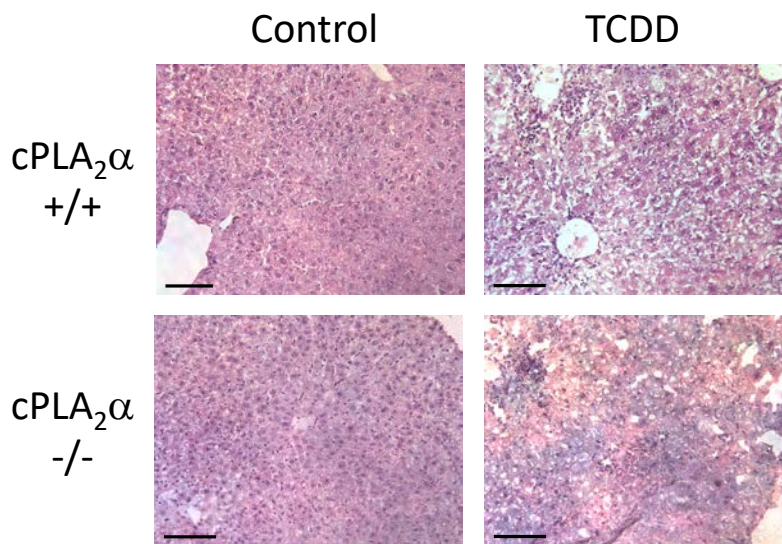
\*To whom correspondence should be addressed.

1. E-mail: tohyamac-ky@umin.org

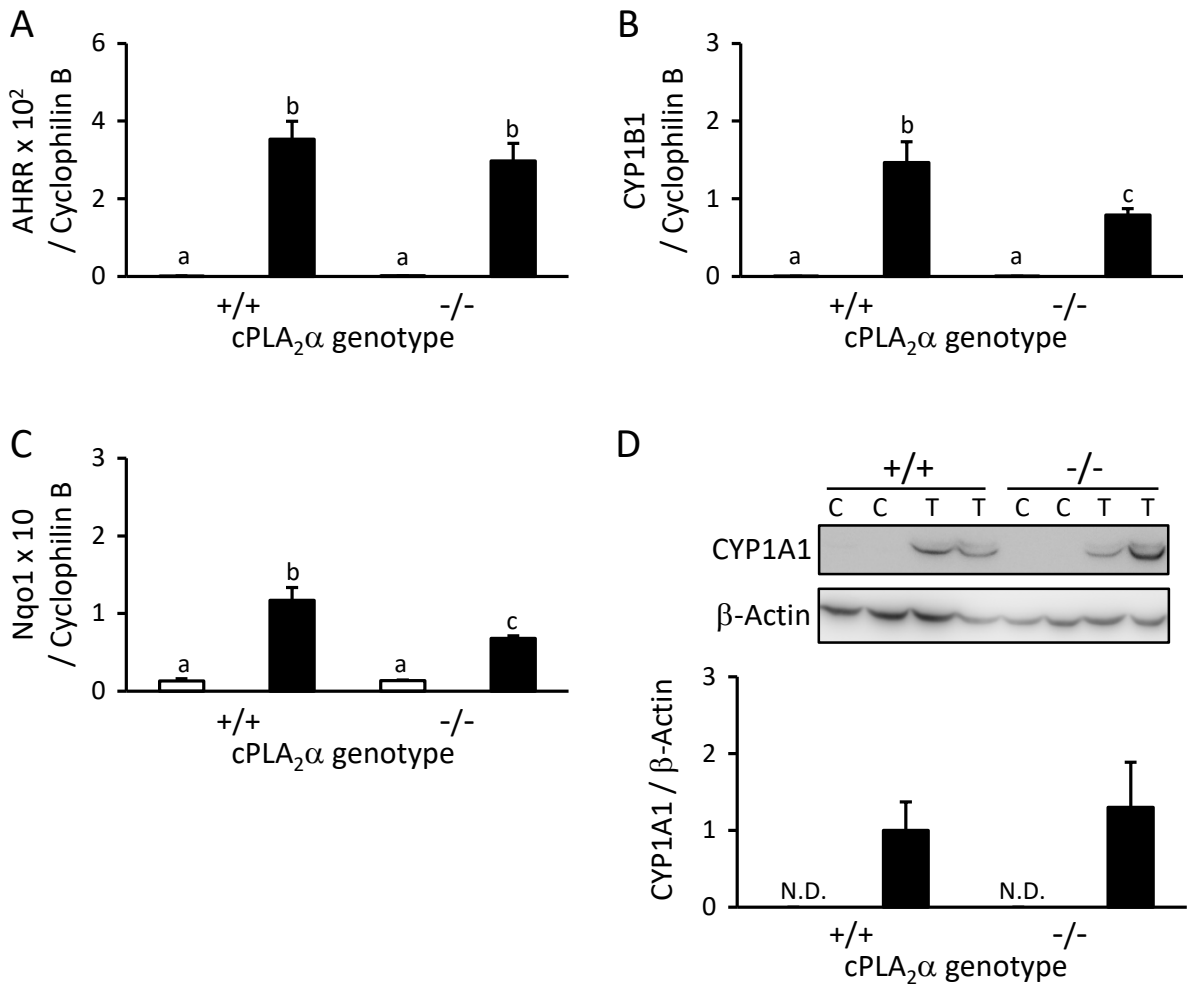
2. E-mail: yoshioka-w@umin.ac.jp

**Supplementary Table 1.** Sequences of primers used for qPCR

Target Gene		Primer Sequences (5' to 3')
<i>AHRR</i>	Forward	CAG GGC AGA CAT TGT GGT TA
	Reverse	CTC CAT TGC TCT TTC CTG CT
<i>COX-2</i>	Forward	TGT GAA CAA TCA AAC AAA ATG ATG
	Reverse	GCG TAA ATT CCA ACA GCC TAA GT
<i>cPLA<sub>2</sub><math>\alpha</math></i>	Forward	AGC ATT CAA AAG GCT TCA CG
	Reverse	GGG AAA CAG AGC AAC GAG AT
<i>Cyclophilin B</i>	Forward	GAC TTC ACC AGG GGA GAT GG
	Reverse	TGT GAG CCA TTG GTG TCT TTG
<i>CYP1A1</i>	Forward	GGC ACC TCT GTT CAC CCT A
	Reverse	GAA TCT CTC CCT CTG TTC TTG
<i>CYP1B1</i>	Forward	TGC CTG CCA CTA TTA CGG AC
	Reverse	GGT CCC TCC CCA CAA CCT
<i>F4/80</i>	Forward	TGC ATC TAG CAA TGG ACA GC
	Reverse	GCC TTC TGG ATC CAT TTG AA
<i>IL-1<math>\beta</math></i>	Forward	CAA GGA GAA CCA AGC AAC GA
	Reverse	GCC GTC TTT CAT TAC ACA GGA
<i>mPGES-1</i>	Forward	CTC AAG CCC TGC TAC CAC A
	Reverse	GGC CTC AGA CAA GAG ACC AT
<i>miR-101a</i>	Forward	GCC TAC AGT AGT GTG ATA AC
<i>Nqo1</i>	Forward	AGA CCT TGC TTT CTA TCA CCA CT
	Reverse	AGA CCT GGA AGC CAC AGA AAC
<i>TNF-<math>\alpha</math></i>	Forward	CAC CAC CAT CAA GCA CTC AA
	Reverse	GAC AGA GGC AAC CTG ACC AC
<i>U6 snRNA</i>	Forward	CGC TTC GGC AGC ACA TAT ACT AA



**Supplementary Figure 1.** Representative photographs of hematoxylin and eosin staining of livers of adult male mice; Bar = 100  $\mu$ m. cPLA<sub>2</sub>α<sup>+/+</sup> and <sup>-/-</sup> mice were intraperitoneally injected TCDD at a dose of 0 (Control) or 50  $\mu$ g/kg body weight on Day 0, and the livers were analyzed on Day 10.



**Supplementary Figure 2.** AHRR (A), CYP1B1 (B), and Nqo1 (C) mRNA expression, and CYP1A1 protein expression (D) in livers of cPLA<sub>2</sub>α<sup>+/+</sup> and cPLA<sub>2</sub>α<sup>-/-</sup> adult male mice at 8 days post administration of TCDD (50 μg/kg body weight) or vehicle. Black and open histogram indicate TCDD and vehicle treatment, respectively. Bars indicate means ± SEM (n = 4). N.D.: not detected. Histograms with different letters indicate significant differences by Tukey post hoc test (A-C) and Welch's *t*-test (D).