

Supplementary Materials

Figure S1

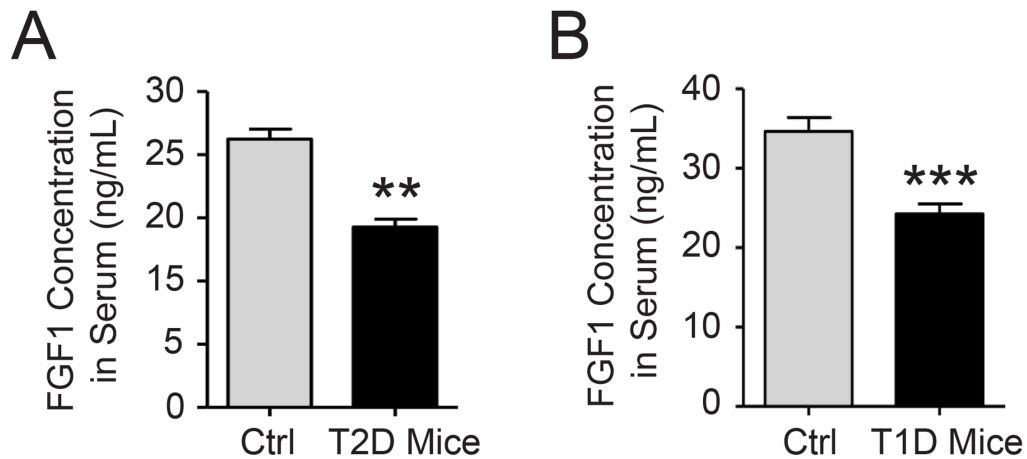


Figure S1. The serum FGF1 levels of experimental mice at an early stage of diabetes

(A) FGF1 concentration in mouse serum from 7-week-old *db/m* and *db/db* (T2D) mice. Data are presented as mean \pm SEM; ** $p < 0.01$ vs *db/m*. $n = 9$. **(B)** FGF1 concentration in mouse serum from 9-week-old C57BL/6 mice and T1D mice induced by treatment with STZ for 4 weeks. Data are presented as mean \pm SEM; *** $p < 0.001$ vs Ctrl. $n = 9$.