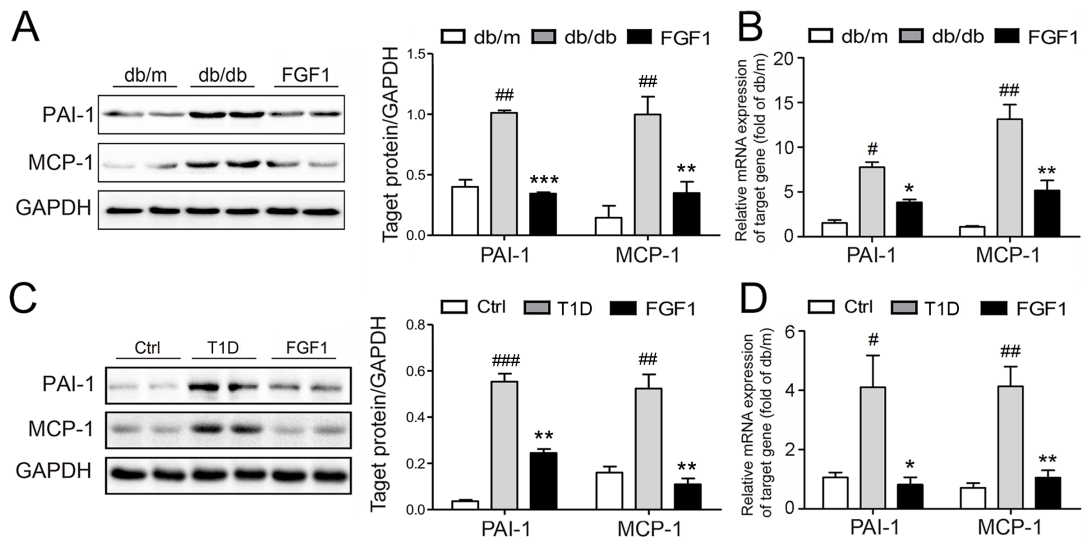


Figure S6



**Figure S6. Effects of FGF1 on plasminogen activator inhibitor-1 (PAI-1) and monocyte chemoattractant protein-1 (MCP-1) in renal tissues of experimental mice**

**(A)** Representative Western blot analysis accompanied by densitometric quantification of PAI-1 and MCP-1 from renal tissue *db/m* (control), *db/db* (T2D), FGF1 (*db/db*+FGF1) groups. **(B)** The corresponding mRNA of PAI-1 and MCP-1 from renal tissues of the same groups. **(C&D)** Parallel evaluation of kidney tissue from control (Ctrl), T1D, and FGF1 (T1D+FGF1) groups for protein (D) and for mRNA (E). Data are presented as mean  $\pm$  SEM; # $p$ <0.05, ## $p$ <0.01 and ### $p$ <0.001 vs non-diabetic control; \* $p$ <0.05, \*\* $p$ <0.01 and \*\*\* $p$ <0.001 vs diabetic mice.  $n=7-9$ .