

Figure S9

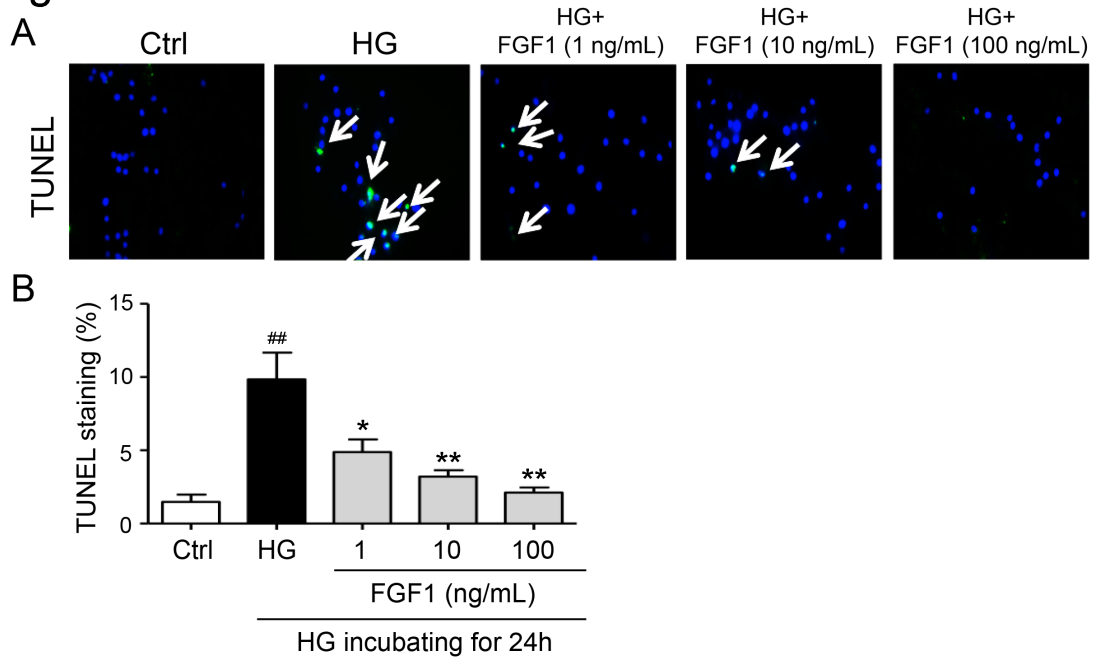


Figure S9. Effect of FGF1 on ameliorating podocyte apoptosis. (A)

Representative images of TUNEL assay showing the podocyte apoptosis induced by 24-hour incubation with HG (25 mM) could be ameliorated by treatment with FGF1 in a dose-dependent manner. **(B)** TUNEL staining

quantification by counting the apoptotic cells out of the total cells in each image. Data are presented as mean \pm SEM; ## p <0.01 vs Ctrl; * p <0.05 and

** p <0.01 vs HG group; n =5.