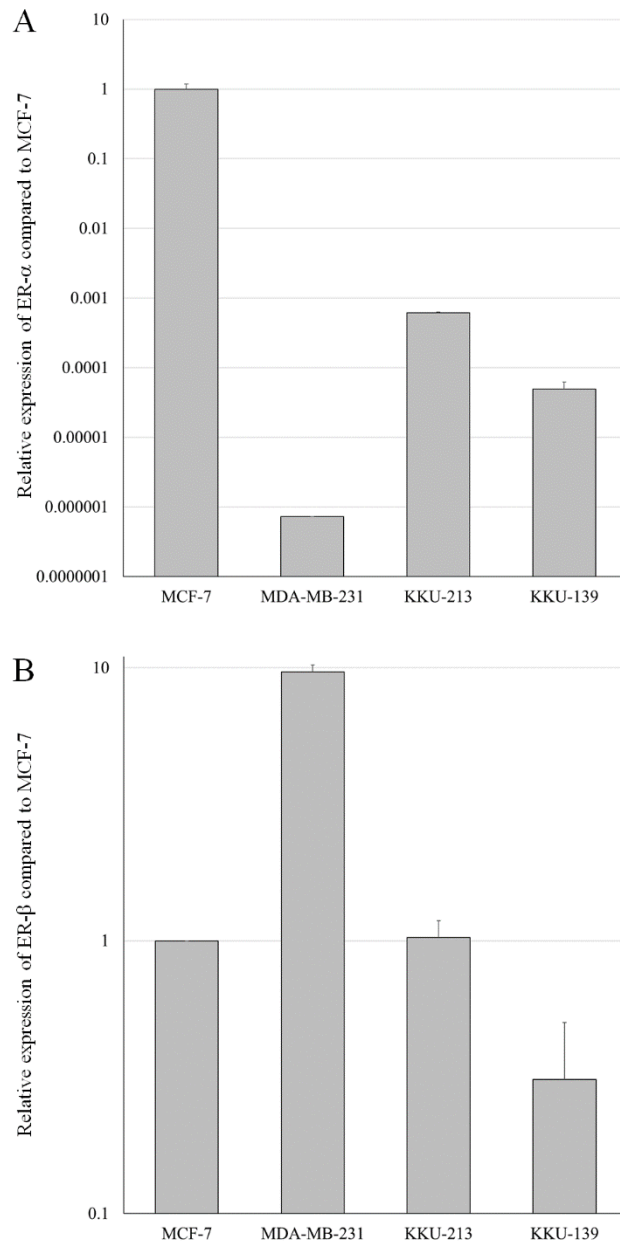
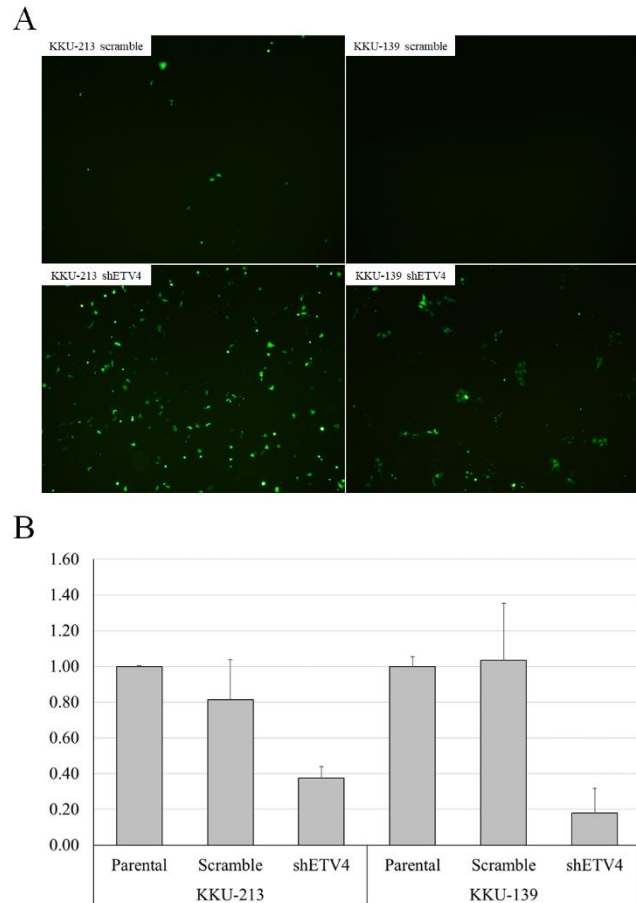


**Table S1** Primer sequences for gene expression analysis of ERs

Gene	Accession no.		Primer sequence (5' → 3')	Size (bp)
<i>ER<math>\alpha</math></i>	NM_000125.3	F	GAATCTGCCAAGGAGACTCGC	151
		R	ACTGGTTGGTGGCTGGACAC	
<i>ER<math>\beta</math></i>	NM_001437.2	F	TGTCTGCAGCGATTACGCA	145
		R	GCGCCGGTTTTTTATCGATT	
<i>36B4</i>	NM_001002.3	F	CTTCCCACTTGCTGAAAAG	168
		R	CCAAATCCCATATCCTCGT	



**Figure S1** Relative expression of ERs in CCA cells compared to MCF-7 and MDA-MB-231 breast cancer cells: (A) ER- $\alpha$ ; (B) ER- $\beta$ .



**Figure S2** Efficacy of shETV4 plasmid transfection and knockdown: (A) Transfection efficacy determined by expression of GFP and visualized under fluorescence inverted microscope with 40x original magnification, cell type and conditions were labelled in the picture; (B) Knockdown efficacy in transfected cells determined by RT-real time PCR and compared to parental cell mRNA.