

low censoring

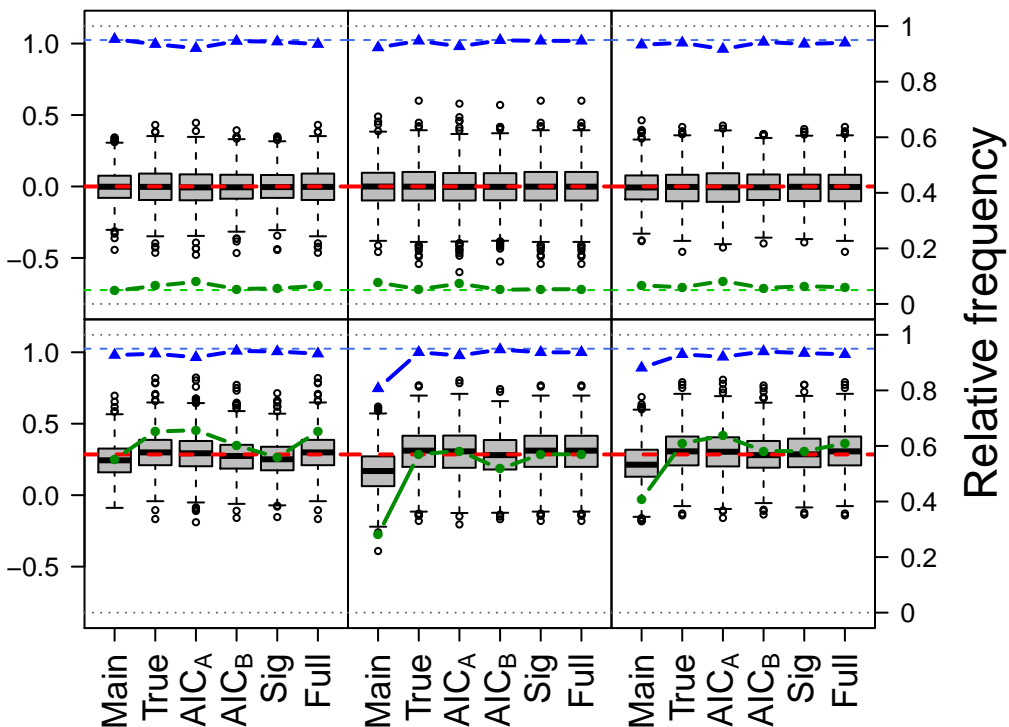
$\Sigma_1$

$\Sigma_2$

$\Sigma_3$

no interaction  
qual. interaction

Estimates for  $\beta_{T \times B}$



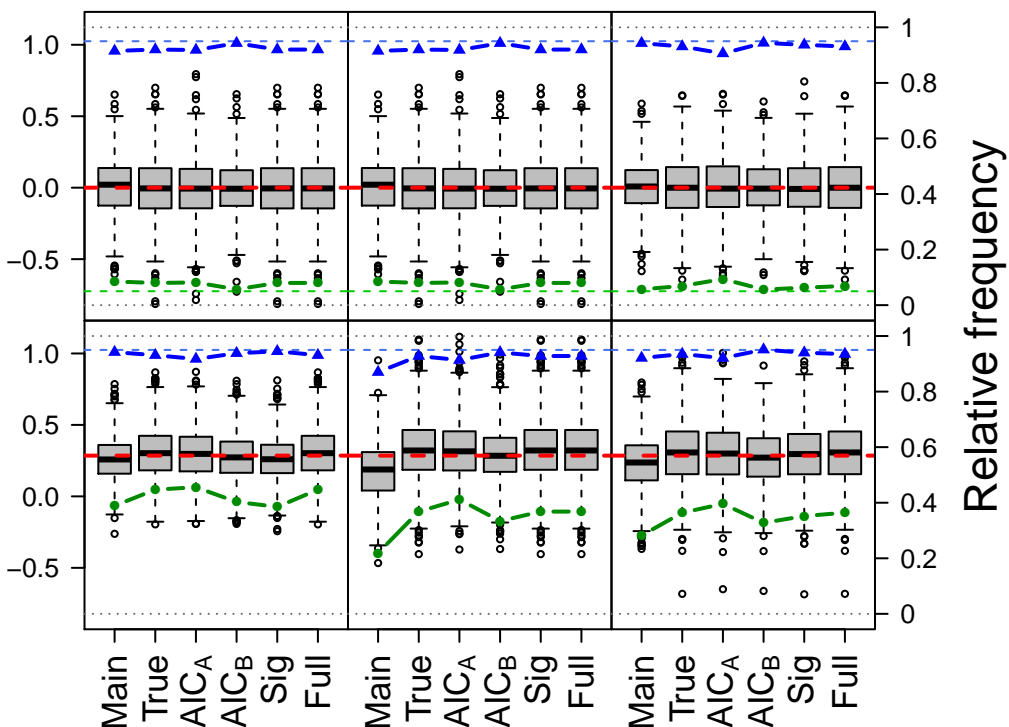
A)

● Rejection of  $H_0$       ▲ Coverage

high censoring

no interaction  
qual. interaction

Estimates for  $\beta_{T \times B}$



B)