

The definition of target difficulty is accompanied by the following graphical illustration.

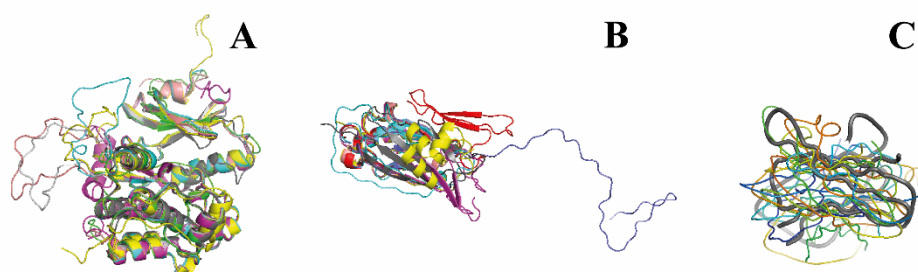


Figure S1 Target difficulties from easy A, medium (B) to hard (C). The difference in performance of the methods participating ranges from variances in larger loops (A, CAMEO target 2017-08-19\_00000112\_1, PDB id 5VDK chain A) to variances in entire segments with the occasional wrong template(s) selected (B, CAMEO target 2017-08-12\_00000100\_1, PDB id 5SYD chain B) to largely disagreeing models (C, 2017-08-12\_00000092\_1, PDB id 5OD4 chain A) often far from the target structure.