

## **Angiotensin-converting enzyme inhibitor reduces scar formation by inhibiting both canonical and noncanonical TGF- $\beta$ 1 pathways**

Qing-Qing Fang<sup>1,2,3</sup>, Xiao-Feng Wang<sup>1,2,3</sup>, Wan-Yi Zhao<sup>1,2,3</sup>, Shi-Li Ding<sup>4</sup>, Bang-Hui Shi<sup>1,2,3</sup>, Ying Xia<sup>1,2,3</sup>, Hu Yang<sup>4</sup>, Li-Hong Wu<sup>1</sup>, Cai-Yun Li<sup>2</sup> & Wei-Qiang Tan<sup>1,2,3\*</sup>

<sup>1</sup>Department of Plastic Surgery, The Fourth Affiliated Hospital, College of Medicine, Zhejiang University, Yiwu, Zhejiang Province, PR China.

<sup>2</sup>Department of Plastic Surgery, The First Affiliated Hospital, College of Medicine, Zhejiang University, Hangzhou, Zhejiang Province, PR China.

<sup>3</sup>Department of Plastic Surgery, Sir Run Run Shaw Hospital, College of Medicine, Zhejiang University, Hangzhou, Zhejiang Province, PR China

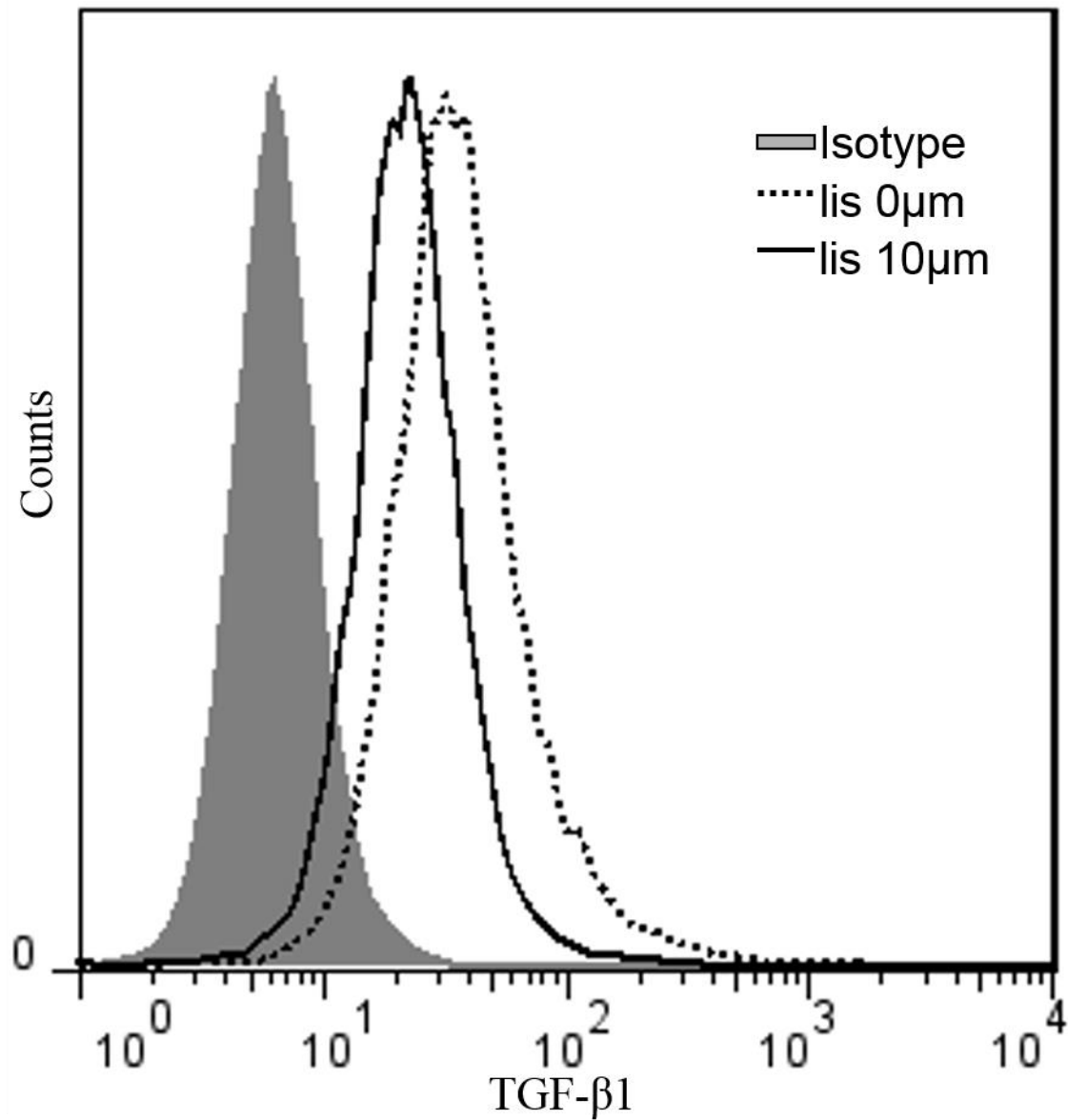
<sup>4</sup>Department of Hand Surgery, The First Affiliated Hospital, College of Medicine, Zhejiang University, Hangzhou, Zhejiang Province, PR China.

### **Corresponding author at:**

Wei-Qiang Tan, M.D. Department of Plastic Surgery, The Fourth Affiliated Hospital, College of Medicine, Zhejiang University, N1 Shangcheng Road, Yiwu, Zhejiang Province 322000, P.R. China.

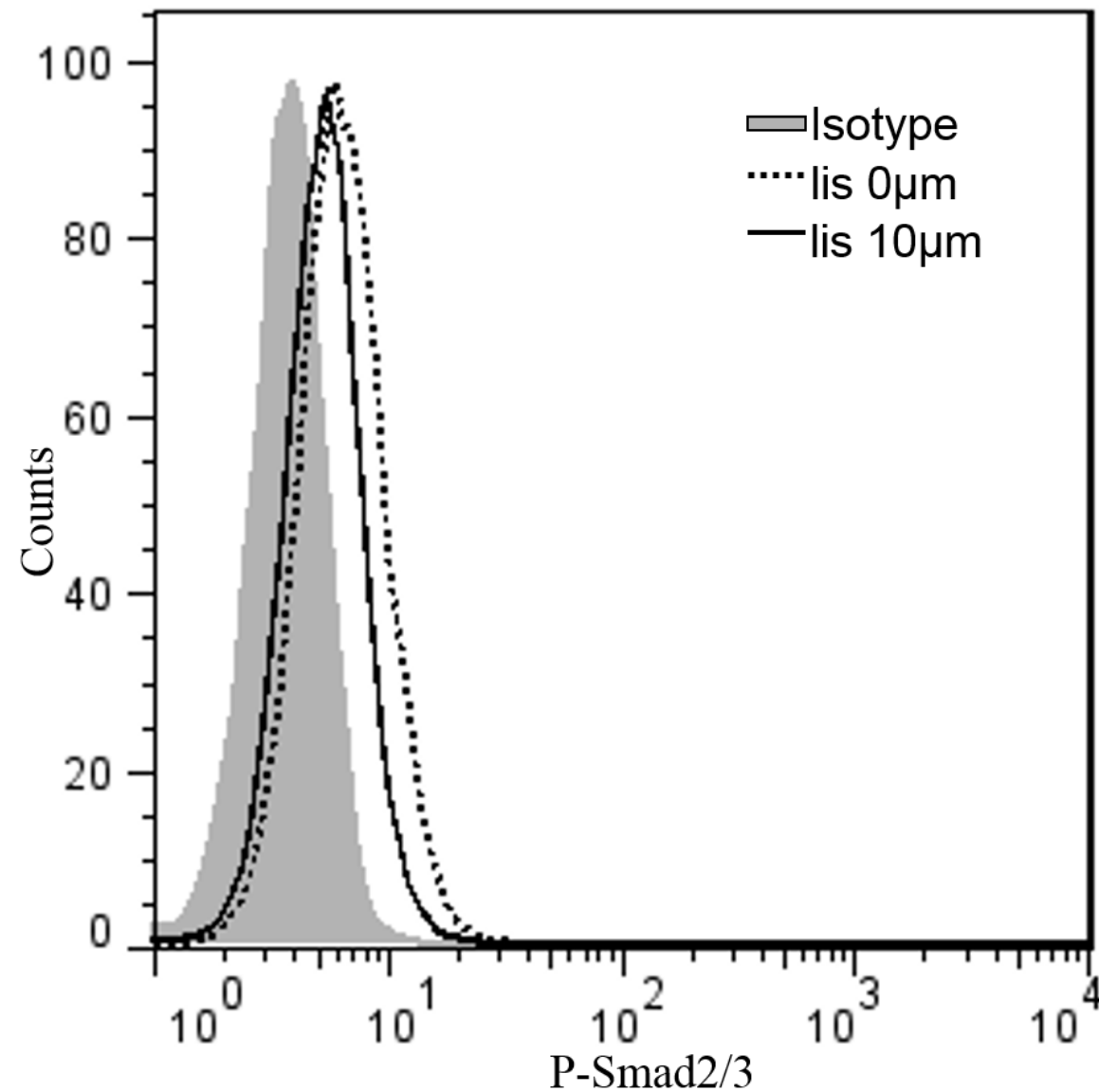
Email address: tanweixxx@zju.edu.cn

# Supplementary figure 1



**Supplementary Figure 1.** TGF- $\beta$ 1 detection of NIH 3T3 cells without or with 10  $\mu$ M Lisinopril. The NIH 3T3 mouse cells were cultured 24 hours in the DMEM with 1% FBS, then in Brefeldin A for 6 hours before the FACS.

# Supplementary figure 2



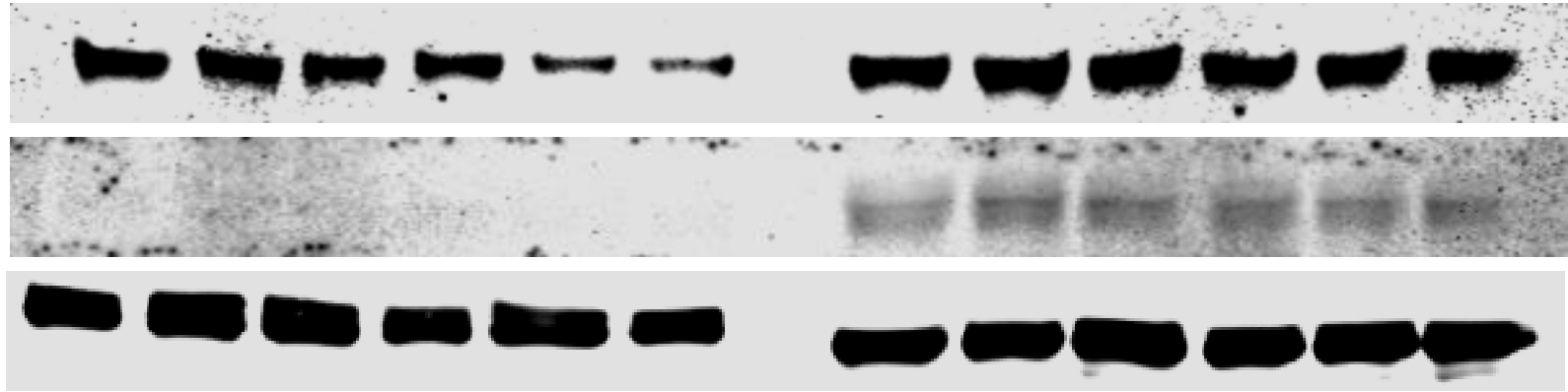
**Supplementary Figure 2.** P-Smad2/3 detection of NIH 3T3 cells without or with 10  $\mu$ M Lisinopril. The NIH 3T3 mouse cells were cultured 24 hours in the DMEM with 1% FBS, then in 2 ng/ml TGF- $\beta$ 1 for 30 minutes before the FACS.

# Supplementary figure 3

p-TAK1

p-Smad2/3

$\alpha$ -Tublin



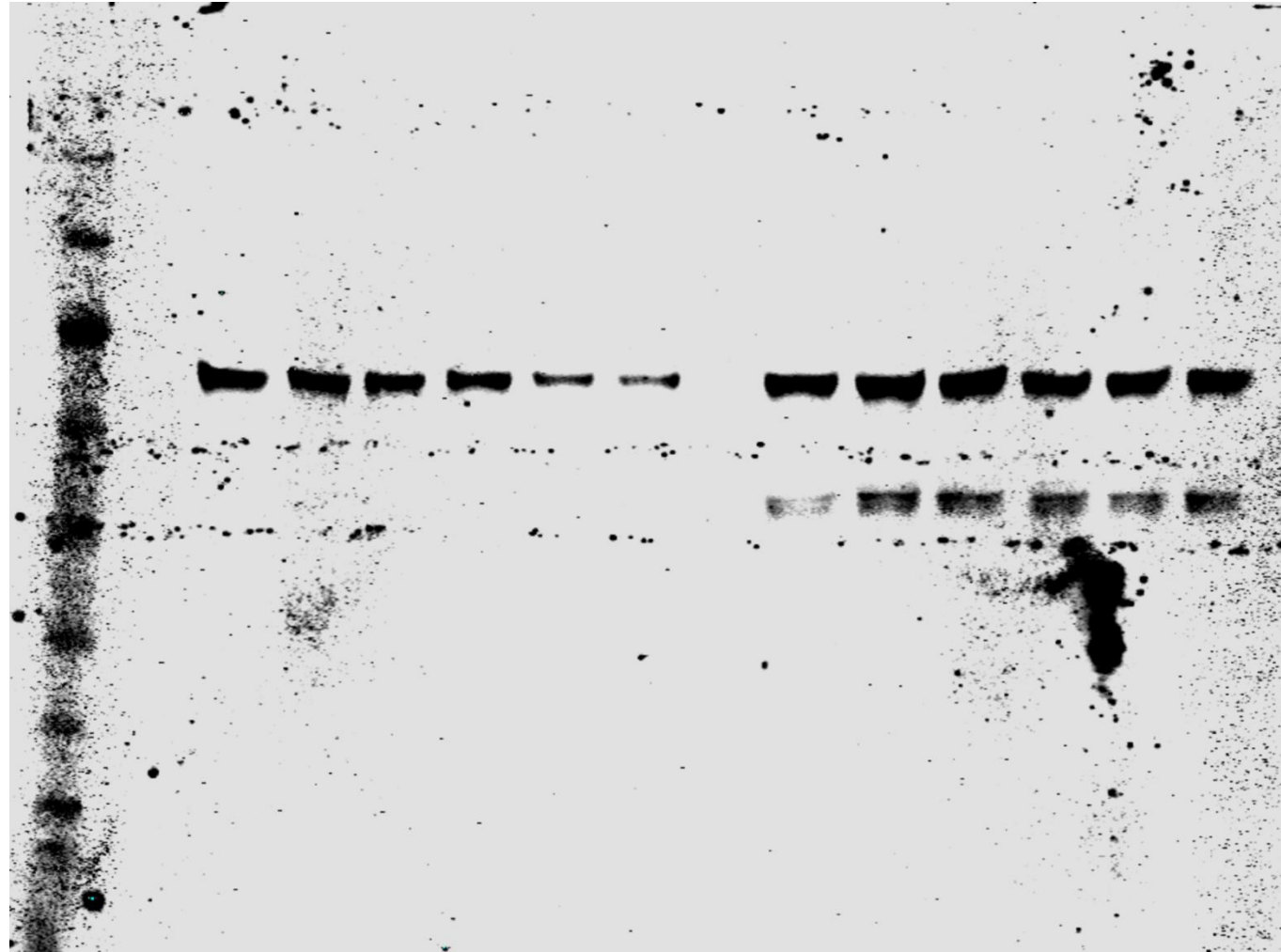
Blank

Lisinopril

TGF- $\beta$

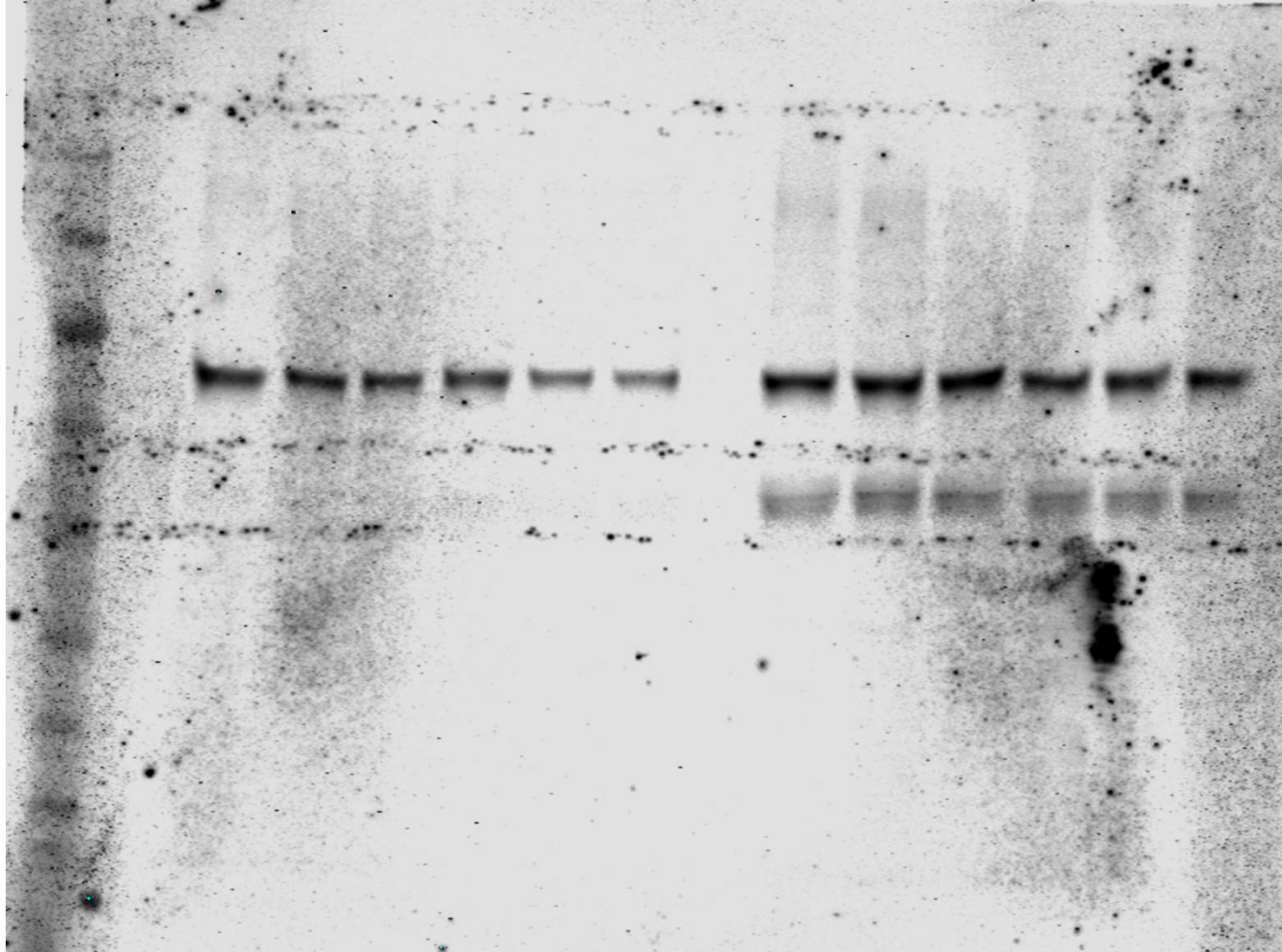
TGF- $\beta$  with  
Lisinopril

**p-TAK1**





**p-Smad2/3**



**$\alpha$ -Tublin**



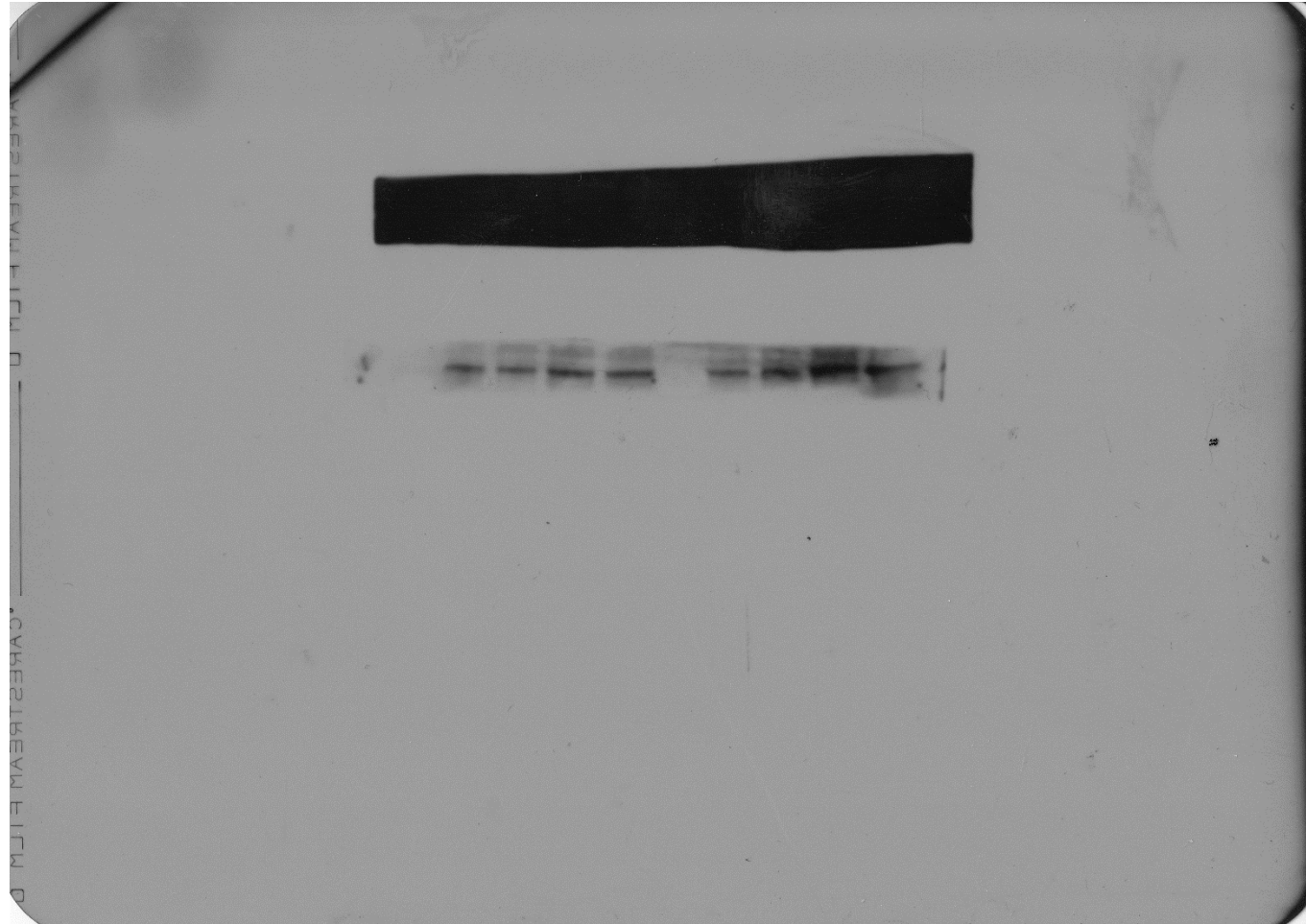
Supplementary figure 4





**TGF- $\beta$**

**p-Smad2/3**



**p-TAK1**

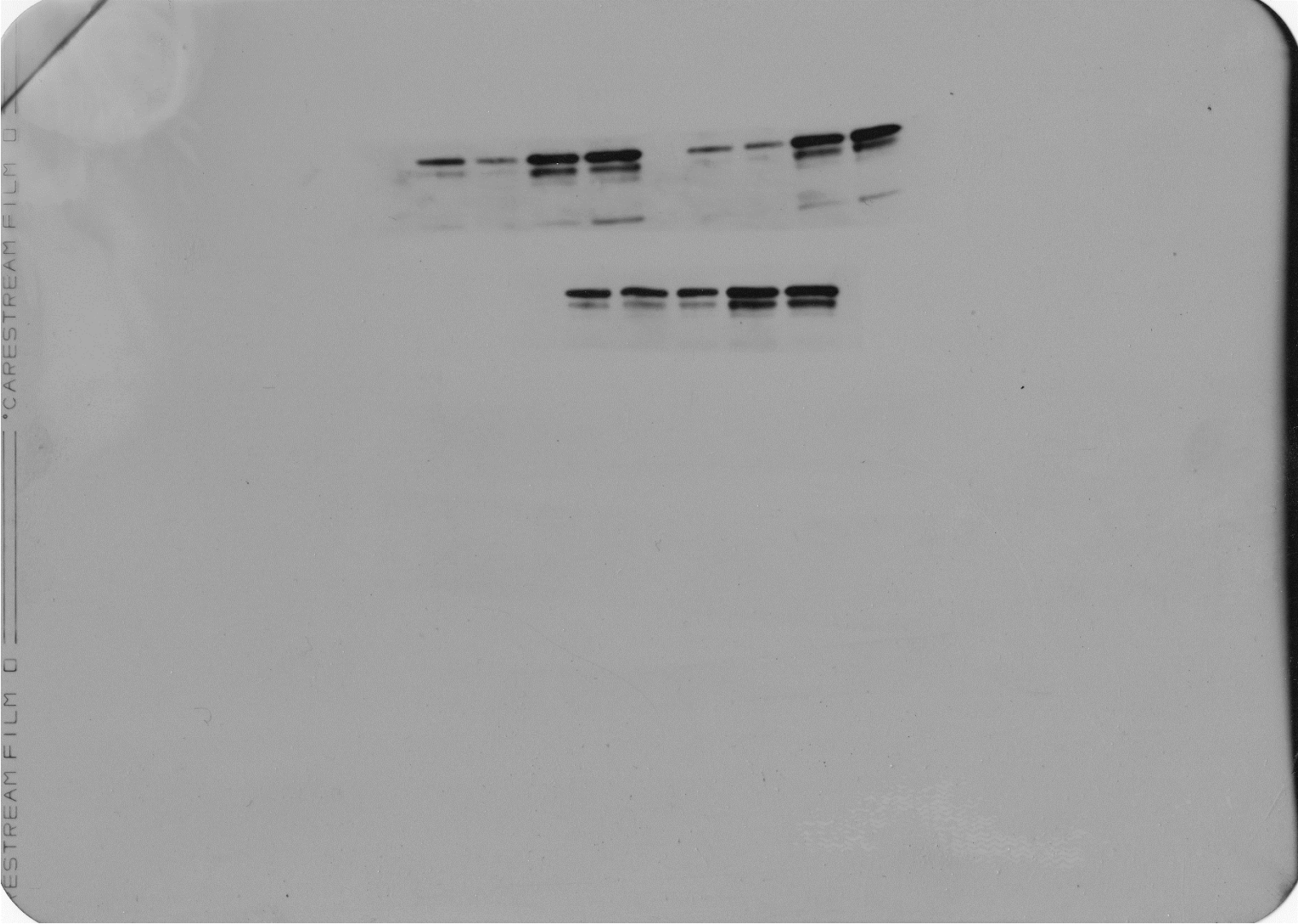




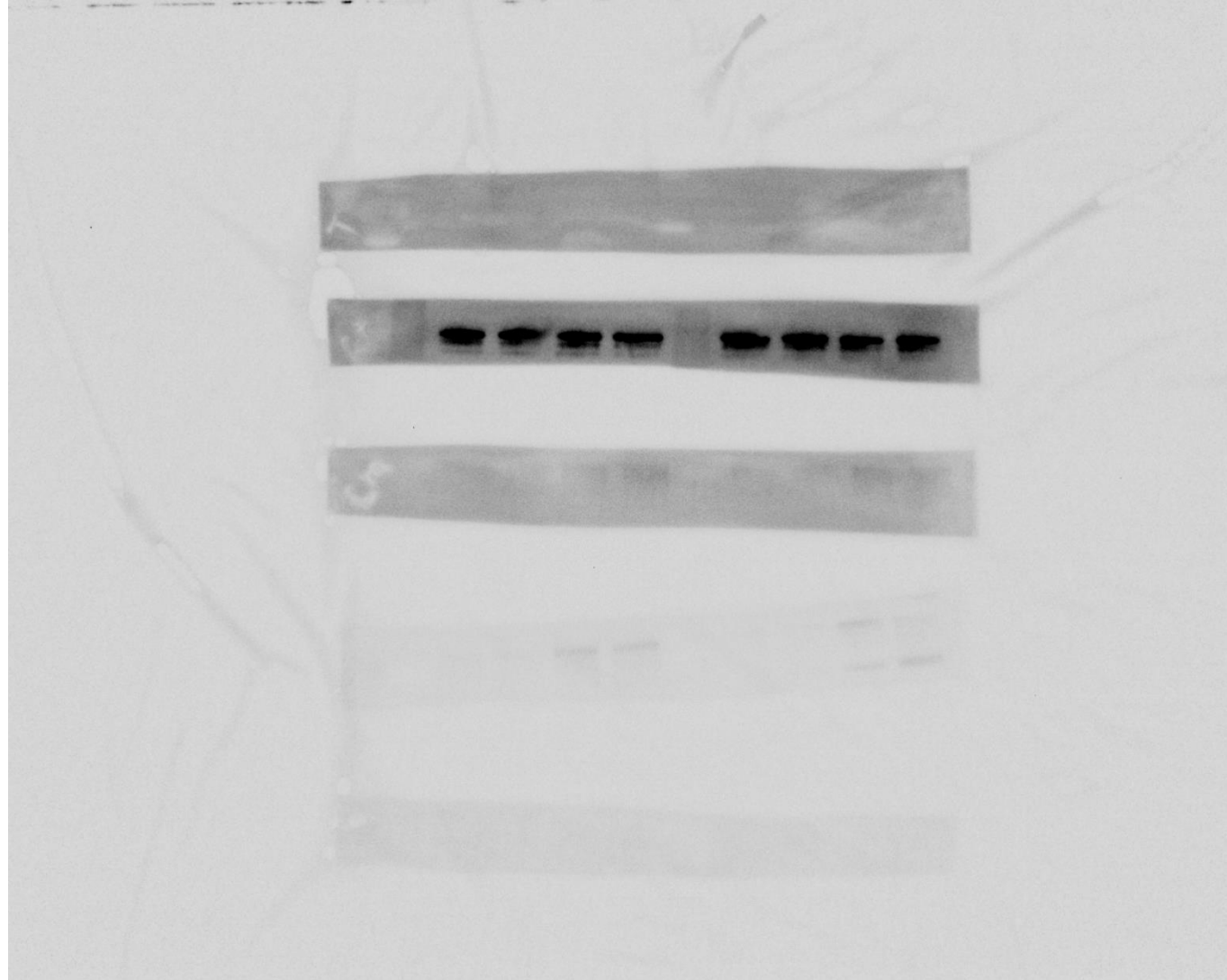
**COL 1**



**COL 3**

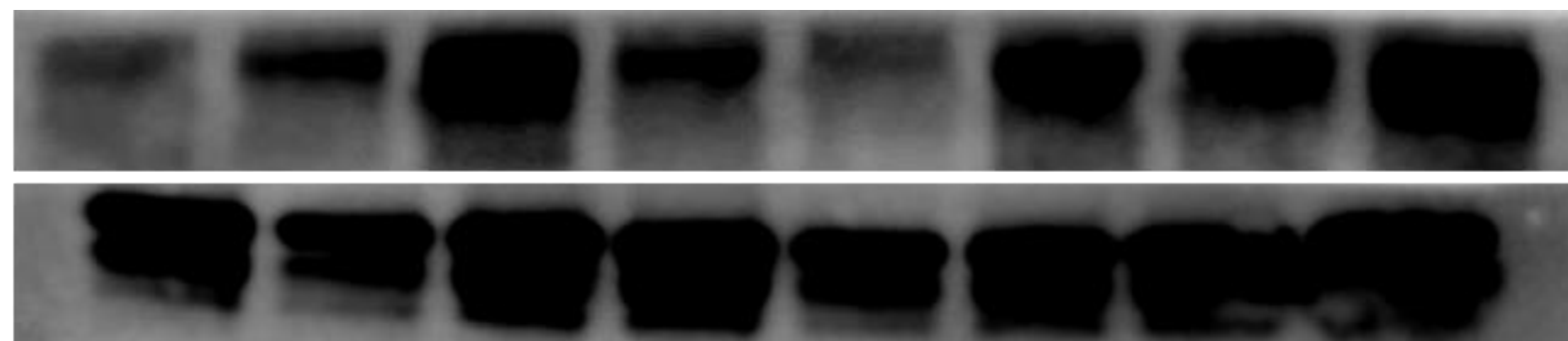


**GAPDH**



ACE

GAPDH



**Ramipril**

**Losartan**

**Hydralazine**

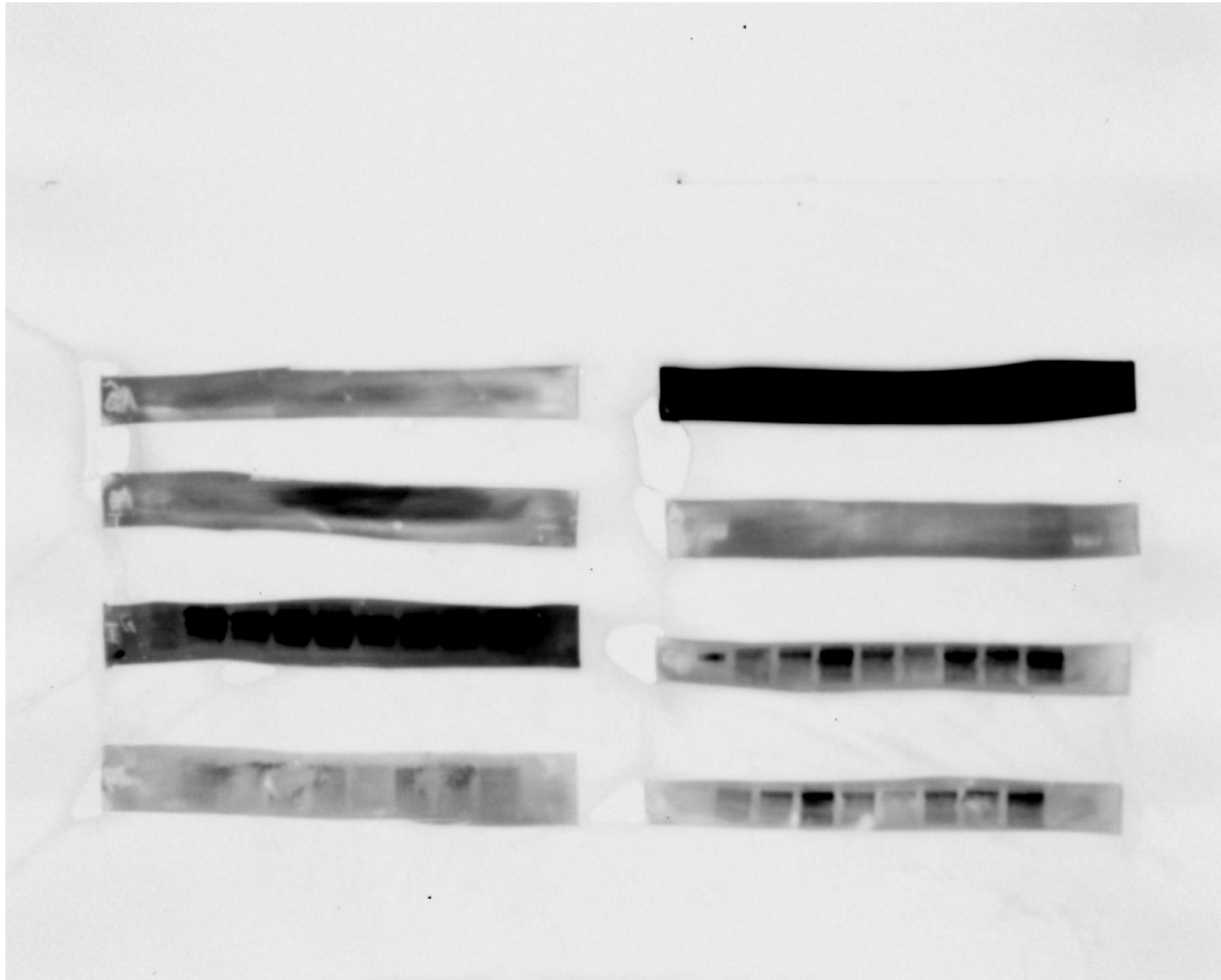
**Blank**

**Ramipril**

**Losartan**

**Hydralazine**

**Blank**



**ACE**

**GAPDH**

