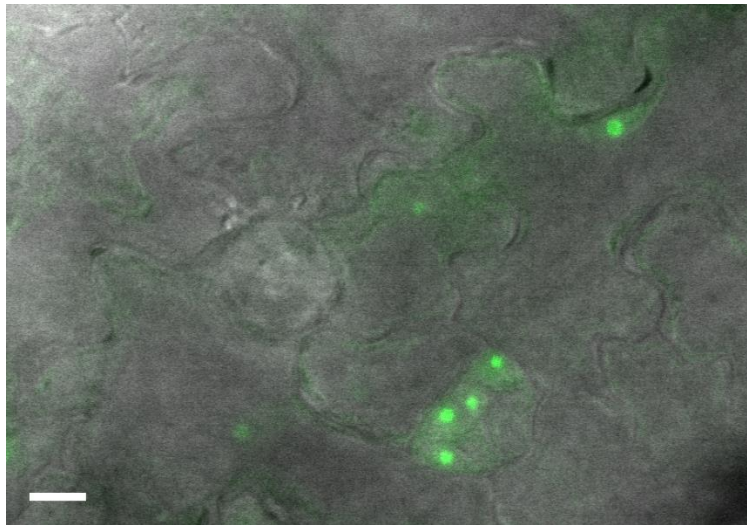


Supplementary Material

Visualization of the nucleolus using ethynyl uridine

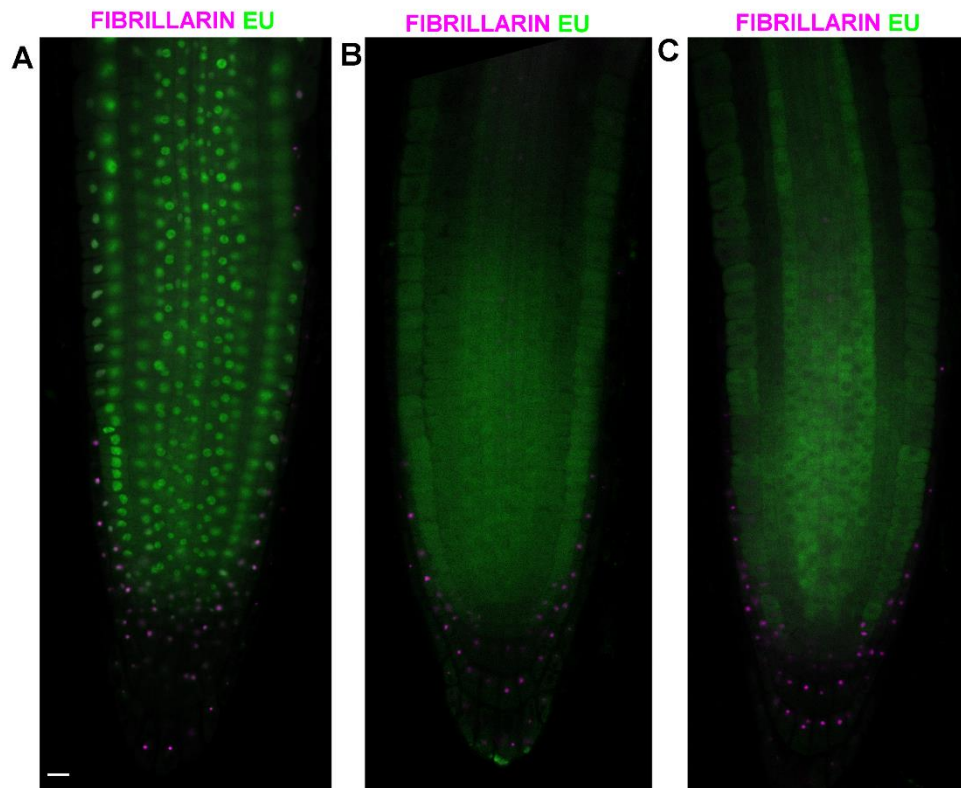
Martina Dvořáčková and Jiří Fajkus

* Correspondence: jiri.fajkus@ceitec.muni.cz, dvorackova.martina@gmail.com



Supplementary Figure 1. EU signal can be detected in the leaf cells.

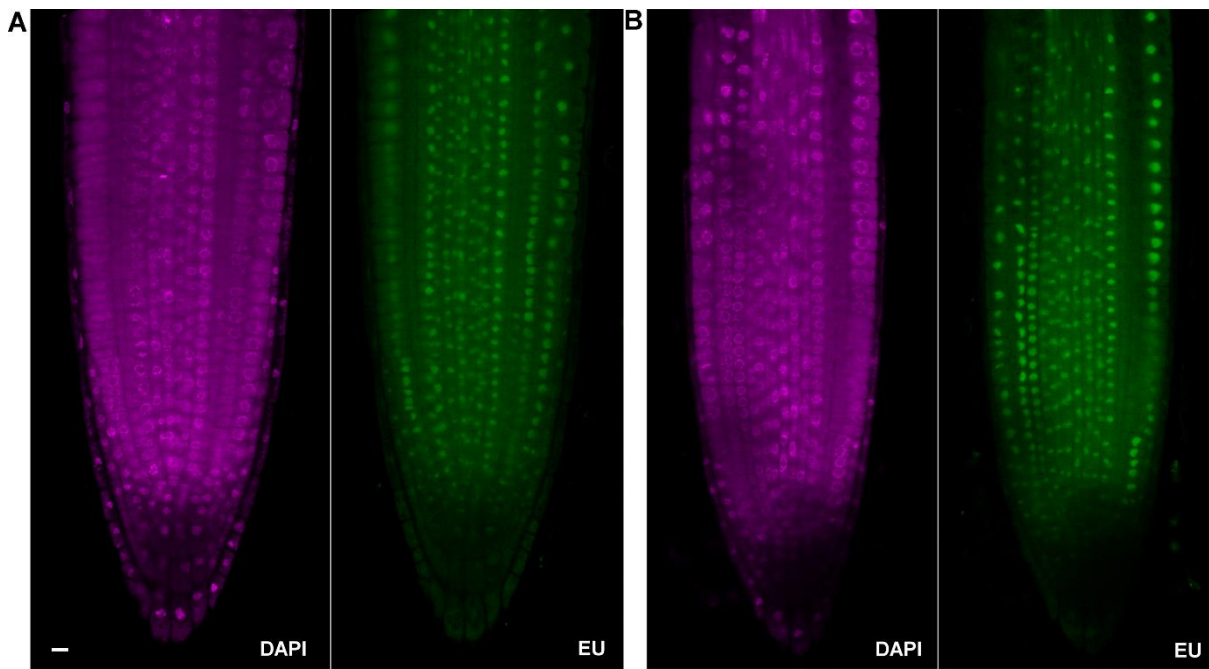
Arabidopsis 4 days old seedlings were incubated for 2 hr with 1 mM EU, fixed and EU-containing RNA (green) was detected by the click iT reaction, bar= 10 μ m



Supplementary Figure 2. EU-labelled RNA shows fast turnover.

- (A) *Arabidopsis* 4 days old seedlings expressing fibrillar-YFP (magenta) were incubated for 2 h with 1 mM EU, fixed and EU-containing RNA (green) was detected by the click iT reaction.
- (B) *Arabidopsis* 4 days old seedlings expressing fibrillar-YFP (magenta) were incubated for 2 h with 1 mM EU followed by incubation in EU-free medium for 3 h. EU-labelled seedlings were fixed and EU-containing RNA (green) was detected by the click iT reaction.
- (C) *Arabidopsis* 4 days old seedlings expressing fibrillar-YFP (magenta) were incubated for 2 h with 1 mM EU followed by incubation in EU-free medium for 6 h. EU-labelled seedlings were fixed and EU-containing RNA (green) was detected by the click iT reaction.

Bar=10 μ m



Supplementary Figure 3. Negligible effect of incubation in the dark or the light.

Arabidopsis 4 days old seedlings were incubated for 2 h with 1 mM EU (green) in the dark (**A**) or in the light (**B**), fixed and EU-containing RNA was detected by the click iT reaction, bar= 10 μ m