

DNA polymerase

Full (181-4278)

First half (181-2081)

Second half (2082-4278)

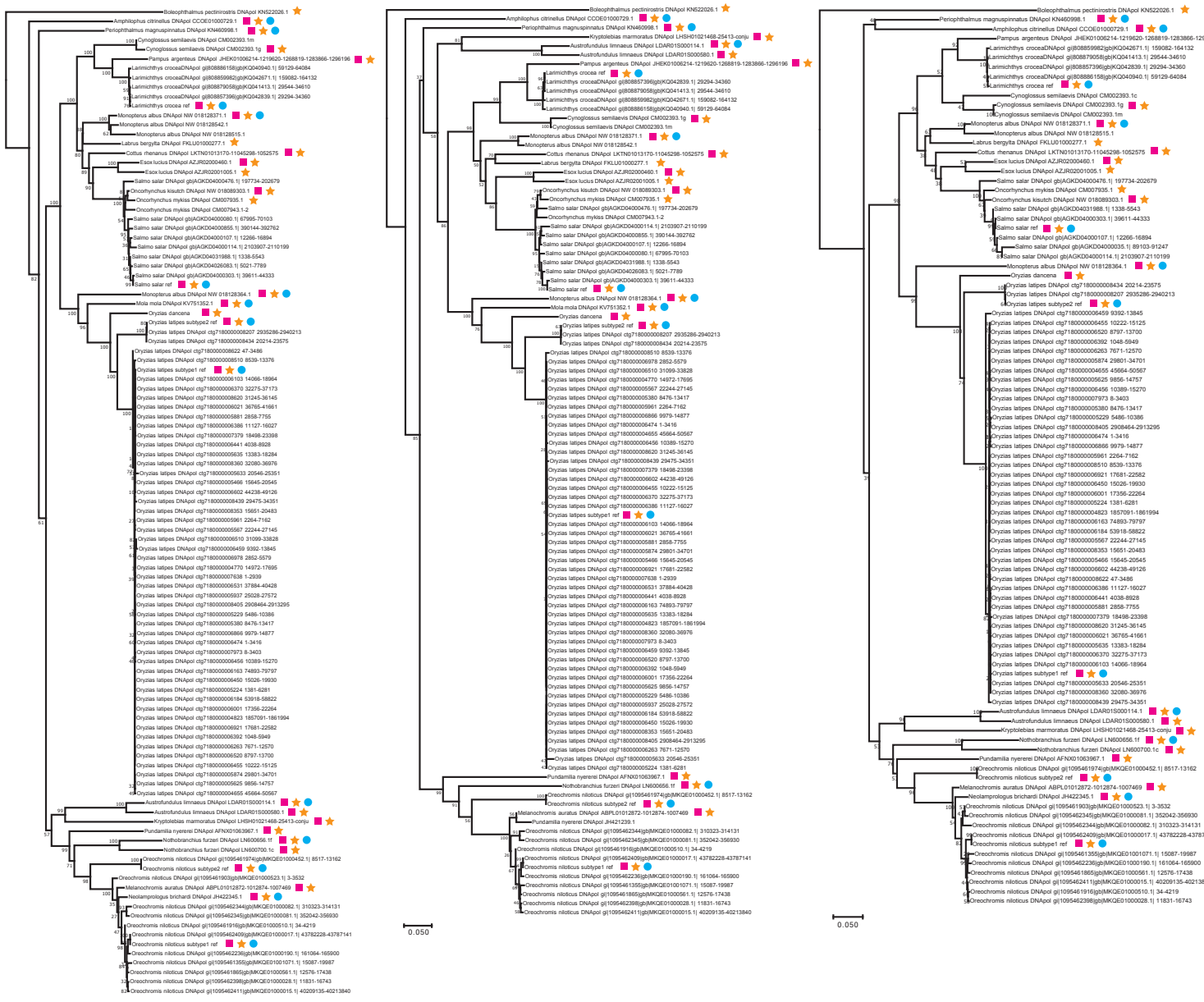


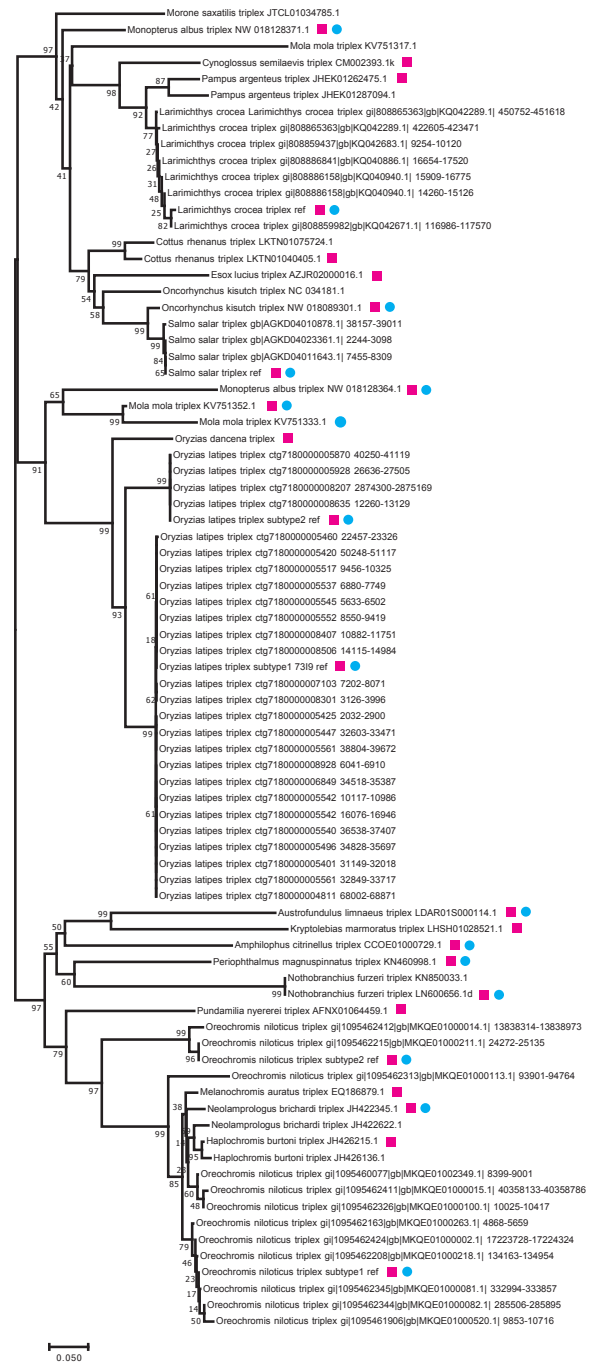
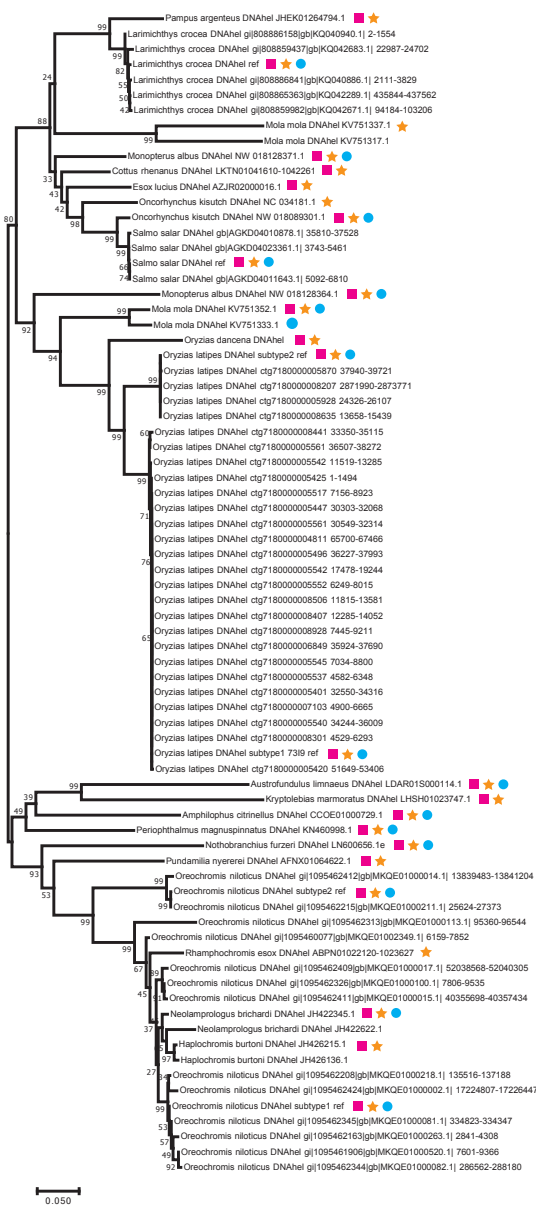
Figure S1

DNA helicase

Capsid triplex protein

Full (116-1758)

Full (2-863)



■ Sequences used for phylogenetic trees in Fig.1b and Fig. 4b
 ★ Sequences used for phylogenetic trees in Supplementary Fig.1 and 2
 ● Sequences same as those in Fig. 2

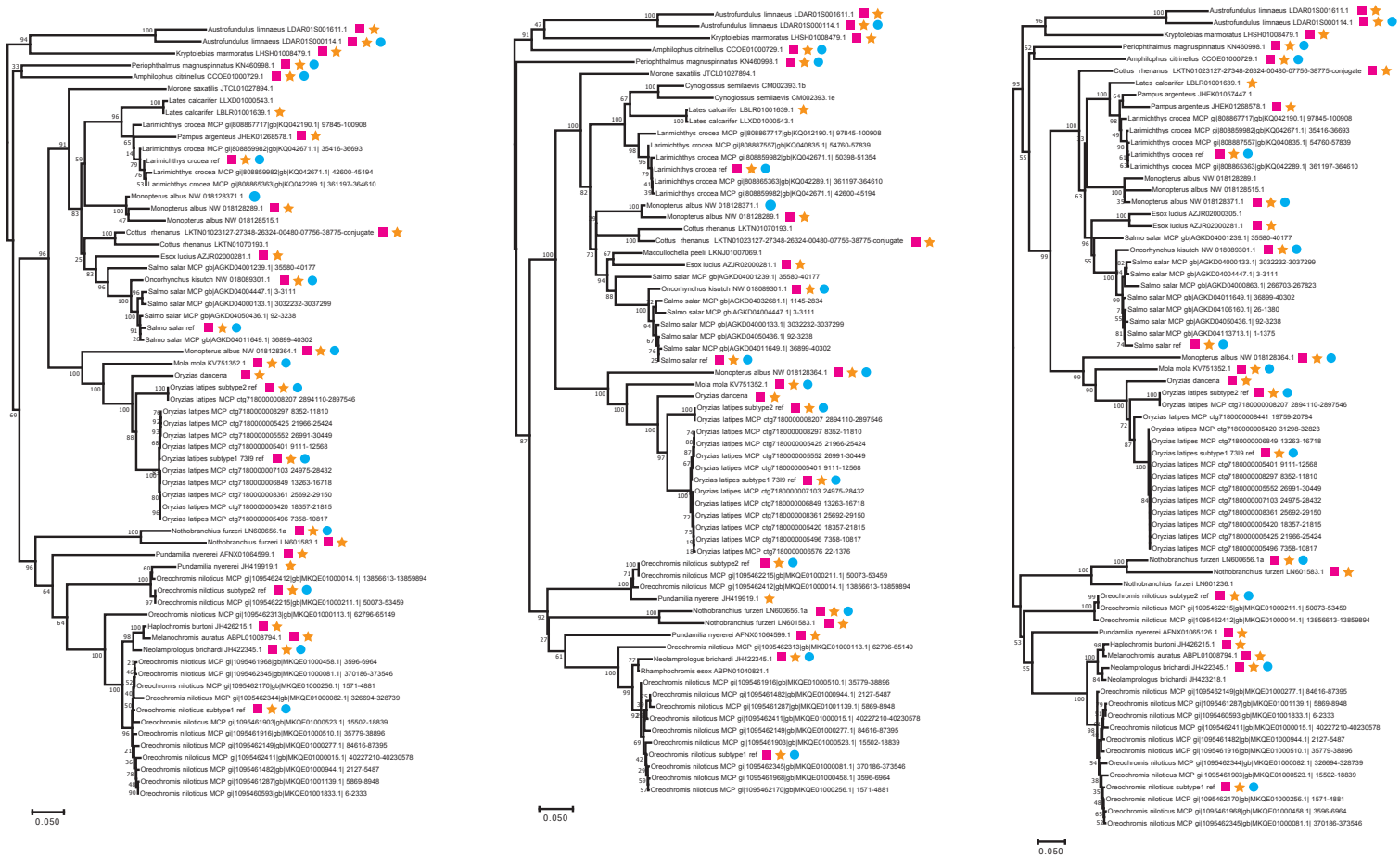
Figure S1 (continued)

Major capsid protein

Full (96-3443)

First half (96-1679)

Second half (1680-3443)



■ Sequences used for phylogenetic trees in Fig. 1b and Fig. 4b ★ Sequences used for phylogenetic trees in Supplementary Fig. 1 and 2 ● Sequences same as those in Fig. 2

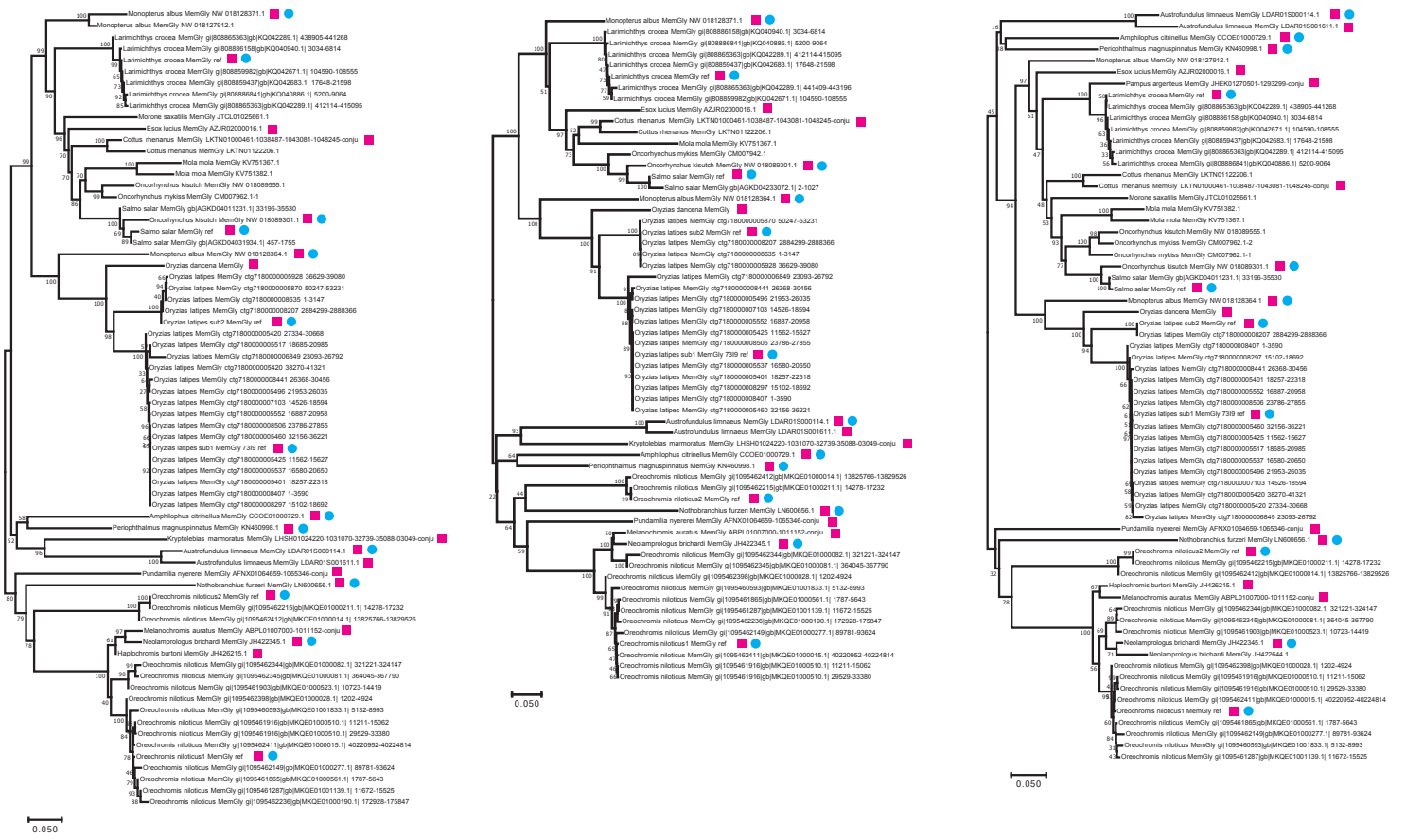
Figure S1 (continued)

Membrane glycoprotein

Full (300-3882)

First half (300-2324)

Second half (2325-3882)



■ Sequences used for phylogenetic trees in Fig.1b and Fig. 4b
 ★ Sequences used for phylogenetic trees in Supplementary Fig.1 and 2
 ● Sequences same as those in Fig. 2

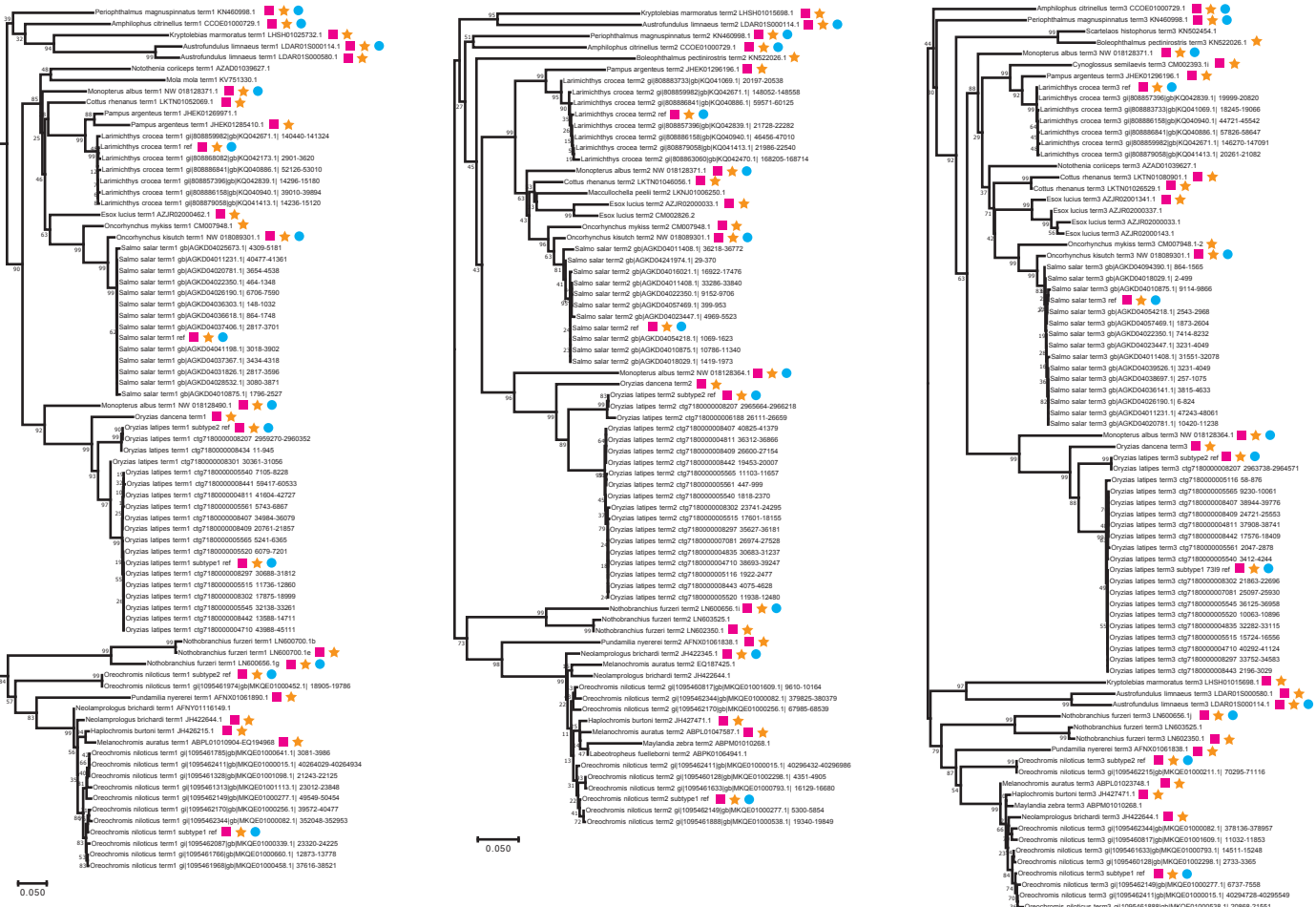
Figure S1 (continued)

DNA packaging terminase

Exon1 (424-1001)

Exon2 (1-554)

Exon3 (7-806)



■ Sequences used for phylogenetic trees in Fig.1b and Fig. 4b
 ★ Sequences used for phylogenetic trees in Supplementary Fig.1 and 2
 ● Sequences same as those in Fig. 2

Figure S1 (continued)